

MACKENZIE EMERGING MARKETS EQUITY INDEX ETF

Interim Management Report of Fund Performance

For the Six-Month Period Ended September 30, 2025

This Interim Management Report of Fund Performance contains financial highlights but does not contain either the interim financial report or annual financial statements of the exchange-traded fund ("ETF"). You may obtain a copy of the interim financial report or annual financial statements, at no cost, by calling the toll-free number 1-800-387-0614, by writing to us at Mackenzie Financial Corporation, 180 Queen Street West, Toronto, Ontario M5V 3K1, by visiting our website at www.mackenzieinvestments.com or by visiting the SEDAR+ website at www.sedarplus.ca.

Unitholders may also contact us using one of these methods to request a copy of the ETF's proxy voting policies and procedures, proxy voting disclosure record or quarterly portfolio disclosure. For more information, please refer to the ETF's Prospectus and ETF Facts, which may also be obtained, at no cost, using any of the methods outlined above. For the ETF's current net asset value per unit and for more recent information on general market events, please visit our website.

A NOTE ON FORWARD-LOOKING STATEMENTS

This report may contain forward-looking statements that reflect our current expectations or forecasts of future events. Forward-looking statements include statements that are predictive in nature, depend upon or refer to future events or conditions, or include words such as "expects", "anticipates", "intends", "plans", "believes", "estimates", "preliminary", "typical" and other similar expressions. In addition, these statements may relate to future corporate actions, future financial performance of a fund or a security and their future investment strategies and prospects. Forward-looking statements are inherently subject to, among other things, risks, uncertainties and assumptions that could cause actual events, results, performance or prospects to differ materially from those expressed in, or implied by, these forward-looking statements. These risks, uncertainties and assumptions include, without limitation, general economic, political and market factors in North America and internationally, interest and foreign exchange rates, the volatility of global equity and capital markets, business competition, technological change, changes in government regulations, changes in securities laws and regulations, changes in tax laws, unexpected judicial or regulatory proceedings, catastrophic events, outbreaks of disease or pandemics (such as COVID-19), and the ability of Mackenzie to attract or retain key employees. The foregoing list of important risks, uncertainties and assumptions is not exhaustive. Please consider these and other factors carefully and do not place undue reliance on forward-looking statements.

The forward-looking information contained in this report is current only as of the date of this report. There should not be an expectation that such information will in all circumstances be updated, supplemented or revised whether as a result of new information, changing circumstances, future events or otherwise.



MACKENZIE
Investments

MACKENZIE EMERGING MARKETS EQUITY INDEX ETF

INTERIM MANAGEMENT REPORT OF FUND PERFORMANCE | For the Period Ended September 30, 2025

Management Discussion of Fund Performance

November 13, 2025

This Management Discussion of Fund Performance presents the portfolio management team's view on the significant factors and developments that have affected the ETF's performance and outlook in the six-month period ended September 30, 2025 (the "period"). If the ETF was established during the period, "period" represents the period since inception.

In this report, "Mackenzie" and "the Manager" refer to Mackenzie Financial Corporation, the manager of the ETF. In addition, net asset value ("NAV") refers to the value of the ETF as calculated for subscription and redemption purposes, on which the discussion of ETF performance is based.

Please read *A Note on Forward-Looking Statements* on the first page of this document.

Results of Operations

Investment Performance

During the period, the ETF returned 19.2% (after deducting fees and expenses). This compares with Solactive GBS Emerging Markets Large & Mid Cap CAD Index return of 20.1%. All index returns are calculated on a total return basis in Canadian dollar terms. Investors cannot invest in an index without incurring fees, expenses and commissions, which are not reflected in the index returns.

Emerging market equities posted strong gains over the period, supported by a weakening U.S. dollar, accommodative central bank policy and robust corporate earnings. South Korea's performance was driven by semiconductor companies amid a global recovery in chip demand due to artificial intelligence investments. Taiwan's equity market was supported by technology exports as global supply chains improved and capital expenditures in manufacturing increased. In contrast, Saudi Arabia was negatively affected by falling oil prices and regional geopolitical tensions.

Through the period, the ETF used a sampling methodology to invest in broadly diversified securities that collectively approximate the full index in terms of key characteristics. Alternatively, the ETF may invest its assets directly in the stocks that make up the index, holding each stock in approximately the same proportion as its weighting in the index.

The difference in performance between the ETF and the index resulted primarily from management fees and other operating expenses, as well as the sampling methodology of the ETF and variations in the timing of currency conversions.

Over the period, changes were made to the ETF's holdings to reflect changes in the composition of the index.

Net Assets

The ETF's net assets increased by 15.8% during the period to \$97.8 million. This change was composed primarily of \$15.6 million in net income (including any interest and/or dividend income) from investment performance, after deducting fees and expenses, and a decrease of \$2.2 million due to net unitholder activity (including sales, redemptions and cash distributions).

Recent Developments

Because the ETF is an index fund, neither market expectations nor recent developments affect the composition of the portfolio.

Related Party Transactions

Management Fees

The annualized management expense ratio ("MER") for the ETF during the period ended September 30, 2025, was similar to the MER for the year ended March 31, 2025. Total expenses paid vary from period to period mainly as a result of changes in average assets in the ETF. The MERs are presented in the *Financial Highlights* section of this report. The ETF paid management fees to the Manager at the annual rate of 0.22%.

The management fee for the ETF is calculated and accrued daily as a percentage of its NAV. The ETF's management fees were used by the Manager to pay for the costs of managing the investment portfolio of the ETF, including providing investment analysis and recommendations, making investment decisions, making brokerage arrangements for the purchase and sale of the investment portfolio, providing other services and licensing the index, and to pay for all costs and expenses (other than certain specified fund costs as more fully described in the Prospectus) required to operate the ETF.

Other Related Party Transactions

Investment funds managed by Mackenzie and its affiliates may invest in the ETF in accordance with the investment objectives of those funds. At September 30, 2025, funds managed by Mackenzie owned 49.2% of the ETF's NAV, and funds managed by Canada Life Investment Management Ltd. owned 9.3% of the ETF's NAV. All related party transactions are based on the current market price. As a result of these investments, the ETF may be subject to large transaction risk as discussed in the Prospectus. Mackenzie manages this risk to reduce the possibility of any adverse effects on the ETF or on its investors, through such processes as settling transactions in kind, charging creation and/or redemption fees for transactions settling in cash, and establishing appropriate order cut-off times for transactions.

The ETF did not rely on an approval, positive recommendation or standing instruction from the Mackenzie Funds' Independent Review Committee with respect to any related party transactions in the period.

MACKENZIE EMERGING MARKETS EQUITY INDEX ETF

INTERIM MANAGEMENT REPORT OF FUND PERFORMANCE | For the Period Ended September 30, 2025

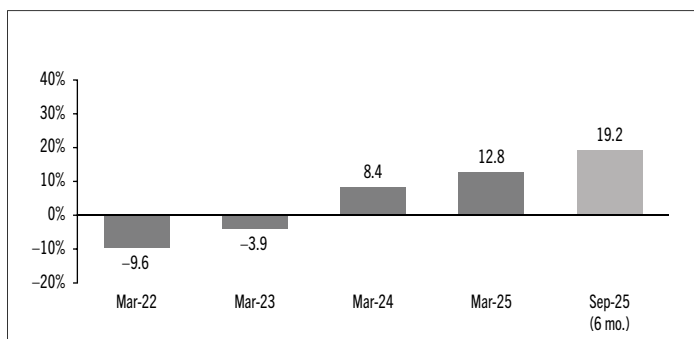
Past Performance

The ETF's performance information assumes all distributions made by the ETF in the periods presented are reinvested in additional units of the ETF. The performance information does not take into account brokerage commissions or income taxes payable by any investor that would have reduced returns or performance. The past performance of the ETF is not necessarily an indication of how it will perform in the future.

If you hold this ETF outside of a registered plan, income and capital gains distributions paid to you increase your income for tax purposes whether paid to you in cash or reinvested in additional units of the ETF. The amount of reinvested taxable distributions is added to the adjusted cost base of the units that you own. This would decrease your capital gain or increase your capital loss when you later sell from the ETF, thereby ensuring that you are not taxed on this amount again. Please consult your tax advisor regarding your personal tax situation.

Year-by-Year Returns

The following bar chart presents the performance of the ETF for each of the fiscal periods shown. The chart shows, in percentage terms, how much an investment made on the first day of each fiscal period, or on the ETF's inception date (February 8, 2022), as applicable, would have increased or decreased by the last day of the fiscal period presented.



MACKENZIE EMERGING MARKETS EQUITY INDEX ETF

INTERIM MANAGEMENT REPORT OF FUND PERFORMANCE | For the Period Ended September 30, 2025

Summary of Investment Portfolio at September 30, 2025

PORTFOLIO ALLOCATION	% OF NAV
Equities	95.1
Exchange-traded funds/notes	4.6
Cash and cash equivalents	0.4
Other assets (liabilities)	(0.1)

REGIONAL ALLOCATION	% OF NAV
China	23.3
Taiwan	19.0
India	15.6
South Korea	10.4
United States	4.8
Hong Kong	4.3
Other	4.2
Brazil	4.1
Saudi Arabia	3.0
South Africa	2.9
United Arab Emirates	2.3
Mexico	2.0
Thailand	1.4
Malaysia	1.2
Indonesia	1.2
Cash and cash equivalents	0.4
Other assets (liabilities)	(0.1)

SECTOR ALLOCATION	% OF NAV
Information technology	24.8
Financials	20.5
Consumer discretionary	13.1
Communication services	9.8
Industrials	6.8
Materials	6.0
Exchange-traded funds/notes	4.6
Consumer staples	4.0
Energy	3.8
Health care	2.8
Utilities	2.5
Real estate	1.0
Cash and cash equivalents	0.4
Other assets (liabilities)	(0.1)

TOP 25 POSITIONS

Issuer/Underlying Fund	% OF NAV
Taiwan Semiconductor Manufacturing Co. Ltd.	9.7
Tencent Holdings Ltd.	4.9
Alibaba Group Holding Ltd.	3.5
iShares MSCI Emerging Markets ETF	3.2
Samsung Electronics Co. Ltd.	3.2
SK Hynix Inc.	1.3
HDFC Bank Ltd.	1.1
Xiaomi Corp.	1.1
Reliance Industries Ltd.	1.0
Pinduoduo Inc.	1.0
China Construction Bank Corp.	0.9
Hon Hai Precision Industry Co. Ltd.	0.8
International Holdings Co. PJSC	0.8
ICICI Bank Ltd.	0.7
iShares MSCI Kuwait ETF	0.7
Meituan Dianping	0.7
iShares MSCI Qatar ETF	0.6
MediaTek Inc.	0.6
Naspers Ltd.	0.6
Delta Electronics Inc.	0.6
Infosys Ltd.	0.5
Bharti Airtel Ltd.	0.5
Al Rajhi Bank	0.5
NetEase Inc.	0.5
Industrial and Commercial Bank of China Ltd.	0.5

Top long positions as a percentage of total net asset value

39.5

The ETF held no short positions at the end of the period.

For the prospectus and other information about the underlying fund(s) held in the portfolio, visit www.mackenzieinvestments.com or www.sedarplus.ca.

The investments and percentages may have changed since September 30, 2025, due to the ongoing portfolio transactions of the ETF.

MACKENZIE EMERGING MARKETS EQUITY INDEX ETF

INTERIM MANAGEMENT REPORT OF FUND PERFORMANCE | For the Period Ended September 30, 2025

Financial Highlights

The following tables show selected key financial information about the ETF and are intended to help you understand the ETF's financial performance for each of the fiscal periods presented below. In the period when the ETF was established, "period" represents the period from inception to the end of that fiscal period. The inception date can be found under *Past Performance*.

THE ETF'S NET ASSETS PER SECURITY (\$)¹

CAD Units (Ticker: QEE)	Sep. 30 2025	Mar. 31 2025	Mar. 31 2024	Mar. 31 2023	Mar. 31 2022
Net assets, beginning of period	98.36	88.55	84.72	91.92	100.00
Increase (decrease) from operations:					
Total revenue	1.14	2.31	2.94	2.47	0.03
Total expenses	(0.13)	(0.38)	(0.05)	(0.03)	(0.02)
Realized gains (losses) for the period	(0.07)	0.84	(0.16)	(3.00)	(0.01)
Unrealized gains (losses) for the period	17.60	5.54	5.65	(4.02)	(10.03)
Total increase (decrease) from operations²	18.54	8.31	8.38	(4.58)	(9.99)
Distributions:					
From net investment income (excluding Canadian dividends)	(0.57)	(0.23)	(0.17)	(2.20)	–
From Canadian dividends	–	–	–	–	–
From capital gains	–	–	–	(0.35)	–
Return of capital	–	–	(0.02)	(0.91)	–
Total annual distributions³	(0.57)	(0.23)	(0.19)	(3.46)	–
Net assets, end of period	116.60	98.36	88.55	84.72	91.92

(1) These calculations are prescribed by securities regulations and are not intended to be a reconciliation between opening and closing net assets per unit. This information is derived from the ETF's unaudited interim financial statements and audited annual financial statements. The net assets per unit presented in the financial statements may differ from the net asset value per unit calculated for ETF pricing purposes. An explanation of these differences, if any, can be found in the *Notes to Financial Statements*.

(2) Net assets and distributions are based on the actual number of units outstanding at the relevant time. The increase/decrease from operations is based on the weighted average number of units outstanding over the fiscal period.

(3) Distributions were paid in cash/reinvested in additional units of the ETF, or both.

Index Provider Disclaimer

The Mackenzie Emerging Markets Equity Index ETF is not sponsored, promoted, sold or supported in any other manner by Solactive AG nor does Solactive AG offer any express or implicit guarantee or assurance either with regard to the results of using Solactive GBS Emerging Markets Large & Mid Cap CAD Index (the "Underlying Index"), including its trademark and/or prices, at any time or in any other respect. The Underlying Index is calculated and published by Solactive AG. Solactive AG uses its best efforts to ensure that the Underlying Index is calculated correctly. Irrespective of its obligations toward Mackenzie, Solactive AG has no obligation to point out errors in the Underlying Index to third parties including but not limited to investors and/or financial intermediaries of the Mackenzie Emerging Markets Equity Index ETF. Neither publication of the Underlying Index by Solactive AG nor the licensing of the Underlying Index or Underlying Index trademark for the purpose of use in connection with the Mackenzie Emerging Markets Equity Index ETF constitutes a recommendation by Solactive AG to invest capital in Mackenzie Emerging Markets Equity Index ETF nor does it in any way represent an assurance or opinion of Solactive AG with regard to any investment in Mackenzie Emerging Markets Equity Index ETF.

RATIOS AND SUPPLEMENTAL DATA

CAD Units (Ticker: QEE)	Sep. 30 2025	Mar. 31 2025	Mar. 31 2024	Mar. 31 2023	Mar. 31 2022
Total net asset value (\$000) ¹	97,843	84,504	42,504	24,568	17,465
Units outstanding (000) ¹	839	859	480	290	190
Management expense ratio (%) ²	0.27	0.29	0.24	0.24	0.24
Management expense ratio before waivers or absorptions (%) ²	0.27	0.33	0.52	0.51	0.52
Trading expense ratio (%) ³	0.13	0.14	0.04	0.16	0.04
Trading expense ratio before reimbursements (%) ³	0.13	0.17	0.04	0.16	0.04
Portfolio turnover rate (%) ⁴	2.85	186.58	3.83	12.04	n/a
Net asset value per unit (\$)	116.60	98.36	88.55	84.72	91.89
Closing market price (\$) ⁵	117.31	98.32	88.36	84.92	91.83

(1) This information is provided as at the end of the fiscal period shown.

(2) Management expense ratio ("MER") is based on total expenses, excluding commissions and other portfolio transaction costs, income taxes and withholding taxes, for the stated period and is expressed as an annualized percentage of daily average net assets during the period, except as noted. If the ETF was established in the period, the MER is annualized from the date of inception to the end of the period. Where the ETF directly invests in securities of another fund (including other ETFs), the MER presented for the ETF includes the portion of MERs of the other fund(s) attributable to this investment. Any income distributions received from ETFs managed by the Manager, with the intention of offsetting fees paid within those ETFs but which are not considered to be duplicative fees under regulatory requirements, are treated as waived expenses for MER purposes. The Manager may waive or absorb operating expenses at its discretion and stop waiving or absorbing such expenses at any time without notice.

(3) The trading expense ratio ("TER") represents total commissions and other portfolio transaction costs incurred as an annualized percentage of daily average net assets during the period. Where the ETF invests in securities of another fund (including other ETFs), the TER presented for the ETF includes the portion of TERs of the other fund(s) attributable to this investment. The Manager may reimburse the ETF for certain brokerage commissions and other transaction costs (including those payable to the custodian or its agents). The Manager may make these reimbursements at its discretion and stop these reimbursements at any time without notice.

(4) The ETF's portfolio turnover rate indicates how actively the ETF's portfolio advisor manages its portfolio investments. A portfolio turnover rate of 100% is equivalent to the ETF buying and selling all of the securities in its portfolio once in the course of the period. The higher the ETF's portfolio turnover rate in a period, the greater the trading costs payable by the ETF in the period, and the greater the chance of an investor receiving taxable capital gains in the year. There is not necessarily a relationship between a high turnover rate and the performance of the ETF. The portfolio turnover rate is not provided when the ETF is less than one year old. The value of any trades to realign the ETF's portfolio after a fund merger is excluded from the portfolio turnover rate.

(5) Closing market price, or the midpoint of the bid and ask prices in the absence of a closing market price, on the last trading day of the period as reported on the Toronto Stock Exchange.