

SYMMETRY MODERATE GROWTH PORTFOLIO

Interim Management Report of Fund Performance

For the Six-Month Period Ended September 30, 2025

This Interim Management Report of Fund Performance contains financial highlights but does not contain either the interim financial report or annual financial statements of the investment fund. You may obtain a copy of the interim financial report or annual financial statements, at no cost, by contacting us using one of the methods noted under Fund Formation and Series Information or by visiting the SEDAR+ website at www.sedarplus.ca.

Securityholders may also contact us using one of these methods to request a copy of the investment fund's proxy voting policies and procedures, proxy voting disclosure record or quarterly portfolio disclosure. For more information, please refer to the Fund's Simplified Prospectus and Fund Facts, which may also be obtained, at no cost, using any of the methods outlined above.

For the Fund's current net asset values per security and for more recent information on general market events, please visit our website.

A NOTE ON FORWARD-LOOKING STATEMENTS

This report may contain forward-looking statements that reflect our current expectations or forecasts of future events. Forward-looking statements include statements that are predictive in nature, depend upon or refer to future events or conditions, or include words such as "expects", "anticipates", "intends", "plans", "believes", "estimates", "preliminary", "typical" and other similar expressions. In addition, these statements may relate to future corporate actions, future financial performance of a fund or a security and their future investment strategies and prospects. Forward-looking statements are inherently subject to, among other things, risks, uncertainties and assumptions that could cause actual events, results, performance or prospects to differ materially from those expressed in, or implied by, these forward-looking statements. These risks, uncertainties and assumptions include, without limitation, general economic, political and market factors in North America and internationally, interest and foreign exchange rates, the volatility of global equity and capital markets, business competition, technological change, changes in government regulations, changes in securities laws and regulations, changes in tax laws, unexpected judicial or regulatory proceedings, catastrophic events, outbreaks of disease or pandemics (such as COVID-19), and the ability of Mackenzie to attract or retain key employees. The foregoing list of important risks, uncertainties and assumptions is not exhaustive. Please consider these and other factors carefully and do not place undue reliance on forward-looking statements.

The forward-looking information contained in this report is current only as of the date of this report. There should not be an expectation that such information will in all circumstances be updated, supplemented or revised whether as a result of new information, changing circumstances, future events or otherwise.



MACKENZIE
Investments

SYMMETRY MODERATE GROWTH PORTFOLIO

INTERIM MANAGEMENT REPORT OF FUND PERFORMANCE | For the Period Ended September 30, 2025

Management Discussion of Fund Performance

November 13, 2025

This Management Discussion of Fund Performance presents the portfolio management team's view on the significant factors and developments that have affected the Fund's performance and outlook in the six-month period ended September 30, 2025 (the "period"). If the Fund was established during the period, "period" represents the period since inception.

In this report, "Mackenzie" and "the Manager" refer to Mackenzie Financial Corporation, the manager of the Fund. In addition, net asset value ("NAV") refers to the value of the Fund as calculated for transaction purposes, on which the discussion of Fund performance is based.

Please read *A Note on Forward-Looking Statements* on the first page of this document.

Results of Operations

Investment Performance

The performance of all series in the current and previous periods is shown in the *Past Performance* section of the report. Performance will vary by series primarily because fees and expenses differ between series, or because securities of a series were not issued and outstanding for the entire reporting period. Please refer to the *Fund Formation and Series Information* section of this report for the varying management and administration fees payable by each series. The following comparison to market indices is intended to help investors understand the Fund's performance relative to the general performance of the markets. However, the Fund's mandate may be different from that of the indices shown.

During the period, the Fund's Series A securities returned 9.8%, and Series LB securities returned 9.7% (after deducting fees and expenses paid by the series). This compares with a return of 16.1% for the Fund's broad-based index, the MSCI AC (All Country) World (Net) Index, and a return of 10.8% for a blended index.* All index and series returns are calculated on a total return basis in Canadian dollar terms. Investors cannot invest in an index without incurring fees, expenses and commissions, which are not reflected in the index returns.

Global equities performed well over the period as shares of U.S. mega-capitalization companies involved in artificial intelligence ("AI") reached new highs. Continued AI investment, robust corporate earnings and a weakening U.S. dollar also supported global investor sentiment. Canadian equities advanced amid resilient commodity prices. Global fixed income markets reflected easing central bank monetary policy, slowing economic growth and moderating inflation. In September, the Bank of Canada reduced its policy rate by 25 basis points, to 2.50% from 2.75%.

Within the MSCI AC (All Country) World (Net) Index, Latin America and Asia Pacific (ex Japan) were the best-performing regions in Canadian dollar terms, while Europe and Africa and the Middle East were the weakest. The information technology, communication services and industrials sectors were the strongest performers, while health care, energy and consumer staples were the weakest.

Within the S&P/TSX Composite Index, materials, information technology and financials were the best-performing sectors, while consumer staples, industrials and health care were the weakest.

The Fund underperformed the broad-based index because of its allocation to fixed income, which underperformed equities in the period. Given the Fund's mandate, the return of the blended index is a more meaningful comparison.

* The blended index is composed of a 45% weighting in the MSCI AC (All Country) World (Net) Index (returned 16.1%), a 30% weighting in the FTSE Canada Universe Bond Index (returned 0.9%), a 15% weighting in the S&P/TSX Composite Index (returned 22.1%) and a 10% weighting in the ICE BofA Global Broad Market (Hedged) Index (returned 1.9%).

The Fund underperformed the blended index. The Fund's asset allocation had no significant impact on performance, while the selection of underlying funds within each asset class contributed to performance.

Among the underlying funds in the portfolio, the largest detractors from relative performance were Mackenzie Enhanced Fixed Income Risk Premia Fund, Mackenzie Global Dividend Fund and Mackenzie Global Macro Fund (respectively representing 2.9%, 3.1% and 1.2% of net assets at period-end).

The largest contributors to relative performance were Mackenzie Enhanced Equity Risk Premia Fund, Mack Canadian Bond Pool and Mack Comprehensive Equity Pool (respectively representing 2.7%, 21.0% and 8.0%).

Net Assets

The Fund's net assets increased by 4.5% during the period to \$1.8 billion. This change was composed primarily of \$165.4 million in net income (including any interest and/or dividend income) from investment performance, after deducting fees and expenses, and a decrease of \$88.1 million due to net securityholder activity (including sales, redemptions and cash distributions).

Fees and Expenses

The annualized management expense ratio ("MER") for each series during the period ended September 30, 2025, was generally similar to the MER for the year ended March 31, 2025. Total expenses paid vary from period to period mainly as a result of changes in average assets in each series. The MERs for all series are presented in the *Financial Highlights* section of this report.

Recent Developments

The portfolio management team's outlook for equities became positive in the period as global markets proved resilient, with improving corporate earnings and stronger investor sentiment. The team believes share valuations in Japan remain reasonable, and longer-term metrics suggest that developed international and emerging markets are more attractively valued than those in the United States and Canada.

The team believes policy uncertainty and slower global growth are likely to cap inflation. Because tariff-related price increases appear transitory, the team does not expect a lasting impact on fixed income investments. In Canada, the team believes softer economic data has increased the likelihood of additional Bank of Canada policy rate cuts. In the United States, a more accommodative tone from the U.S. Federal Reserve and mounting fiscal and debt concerns led markets to price in further interest rate cuts into 2026, which the team believes could pressure the U.S. dollar.

Effective May 29, 2025, the underlying fund Mackenzie Core Plus Canadian Fixed Income ETF was renamed Mackenzie Canadian Strategic Fixed Income ETF.

Related Party Transactions

Management and Administration Services

For each applicable series, the Fund paid management fees and administration fees to the Manager at the annual rates specified under *Fund Formation and Series Information* in this report and as more fully described in the Simplified Prospectus. In return for the administration fees, the Manager pays all costs and expenses (other than certain specified fund costs) required to operate the Fund that are not included in management fees. See also *Management Fees*.

Other Related Party Transactions

During the period, the Mackenzie Funds' Independent Review Committee issued a positive recommendation for the Fund to proceed with investing in a private fund managed by Northleaf Capital Partners, a company affiliated with the Manager.

SYMMETRY MODERATE GROWTH PORTFOLIO

INTERIM MANAGEMENT REPORT OF FUND PERFORMANCE | For the Period Ended September 30, 2025

At September 30, 2025, the Fund held an investment of \$2.0 million (0.1% of the Fund's NAV) in Northleaf Global Private Markets Investors-B LP. This represents US\$1.4 million as part of a total commitment to invest US\$13.4 million.

Investment funds managed by Mackenzie and its affiliates may invest in the Fund. All these investments are made on a prospectus-exempt basis in accordance with the investment objectives of those funds. At September 30, 2025, funds managed by The Canada Life Assurance Company and Canada Life Investment Management Ltd. owned 1.4% of the Fund's NAV. All related party transactions are based on the NAV per security on each transaction day.

At September 30, 2025, Mackenzie had an investment of \$0.02 million in the Fund (less than 0.1% of the Fund's NAV).

During the period, the Fund received \$0.2 million in income distributions from investments in exchange-traded funds ("ETFs") managed by Mackenzie to offset fees paid within those ETFs. There is no assurance that these distributions will continue in the future.

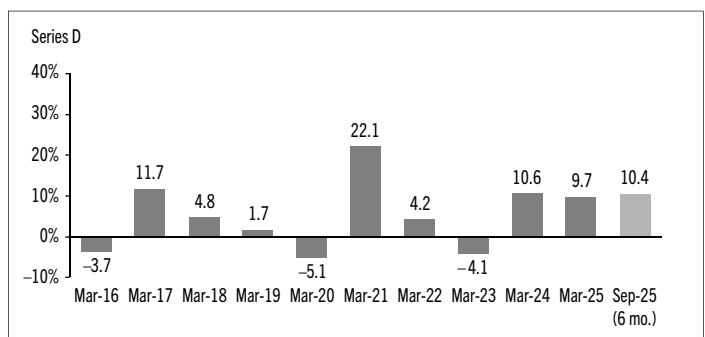
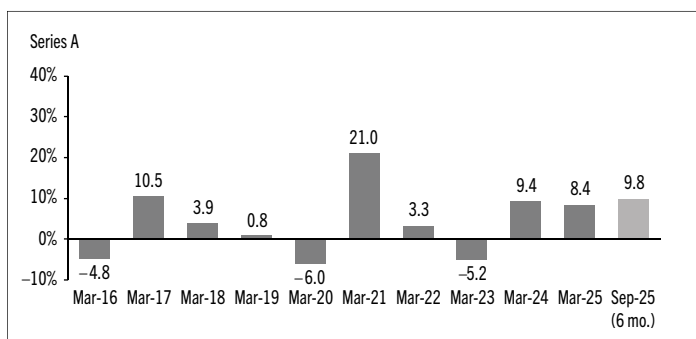
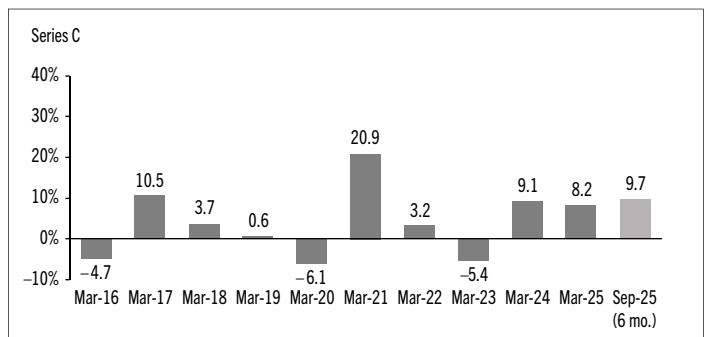
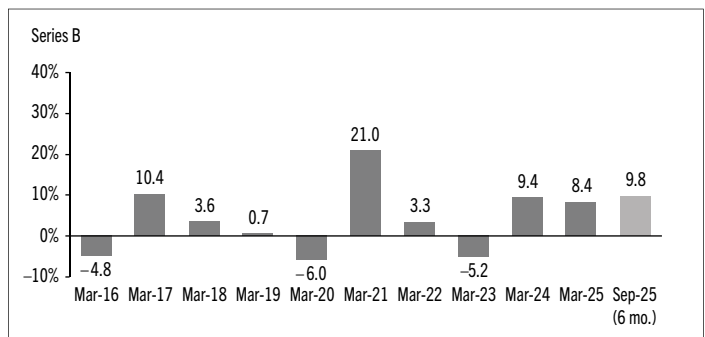
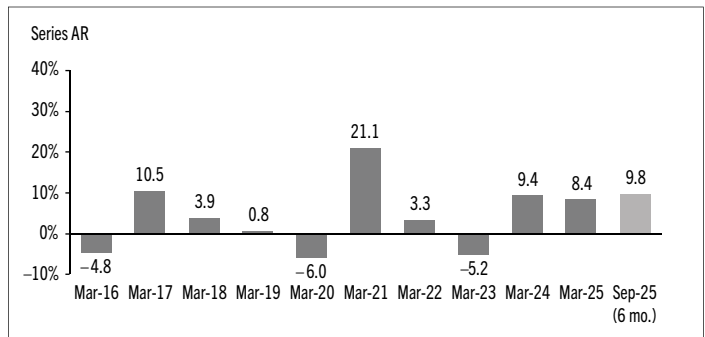
Past Performance

The Fund's performance information assumes all distributions made by the Fund in the periods presented are reinvested in additional securities of the relevant series of the Fund. The performance information does not take into account sales, redemption, distribution or other optional charges, or income taxes payable by any investor that would have reduced returns or performance. The past performance of the Fund is not necessarily an indication of how it will perform in the future.

If you hold this Fund outside of a registered plan, income and capital gains distributions paid to you increase your income for tax purposes whether paid to you in cash or reinvested in additional securities of the Fund. The amount of reinvested taxable distributions is added to the adjusted cost base of the securities that you own. This would decrease your capital gain or increase your capital loss when you later redeem from the Fund, thereby ensuring that you are not taxed on this amount again. Please consult your tax advisor regarding your personal tax situation.

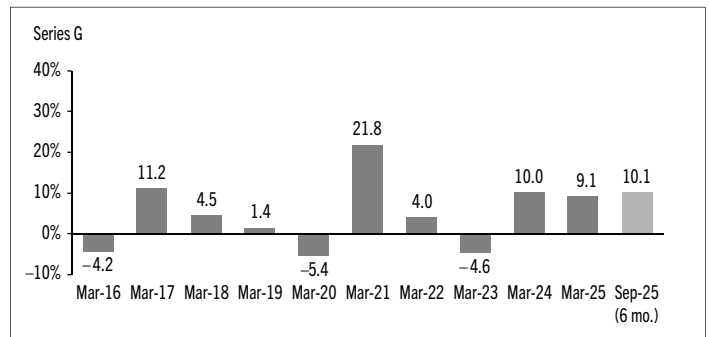
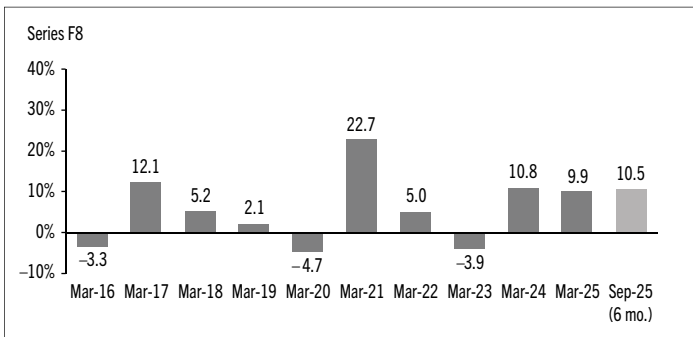
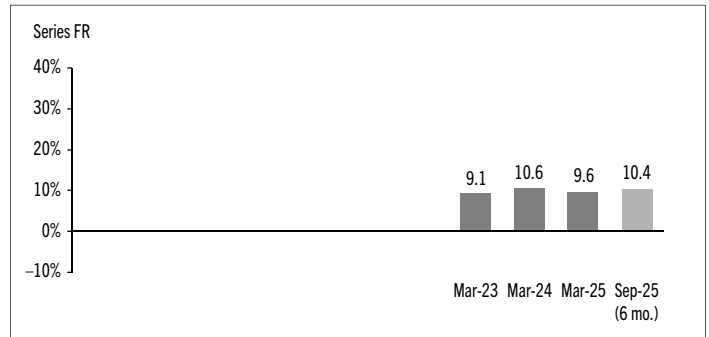
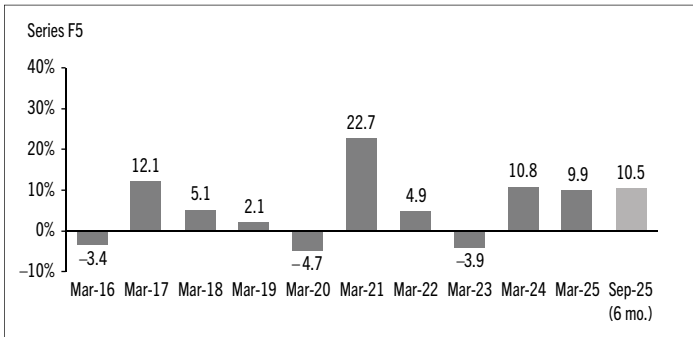
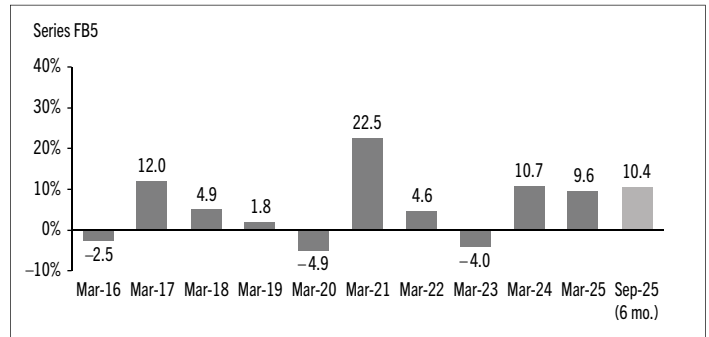
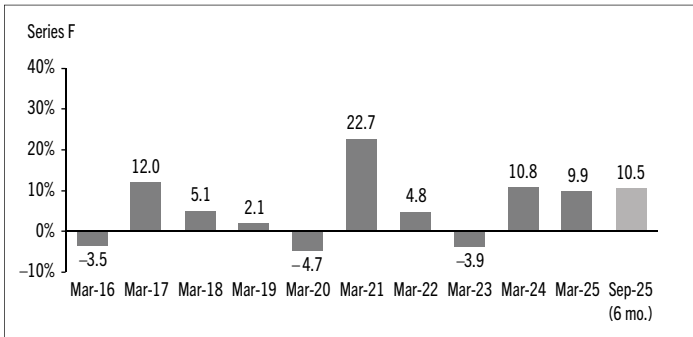
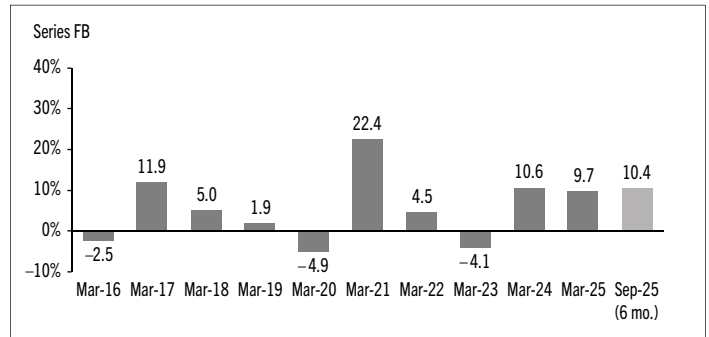
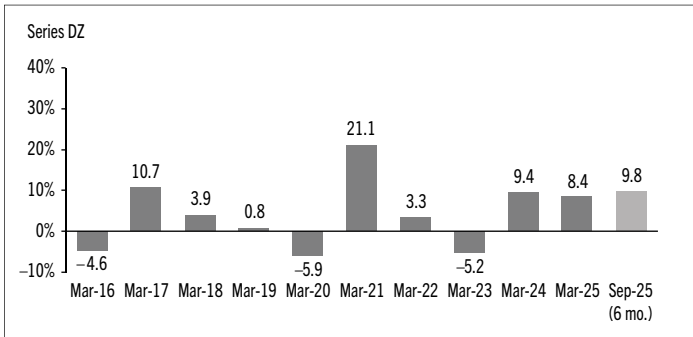
Year-by-Year Returns

The following bar charts present the performance of each series of the Fund for each of the fiscal periods shown. The charts show, in percentage terms, how much an investment made on the first day of each fiscal period, or on the series inception or reinstatement date, as applicable, would have increased or decreased by the last day of the fiscal period presented. Series inception or reinstatement dates can be found under *Fund Formation and Series Information*.



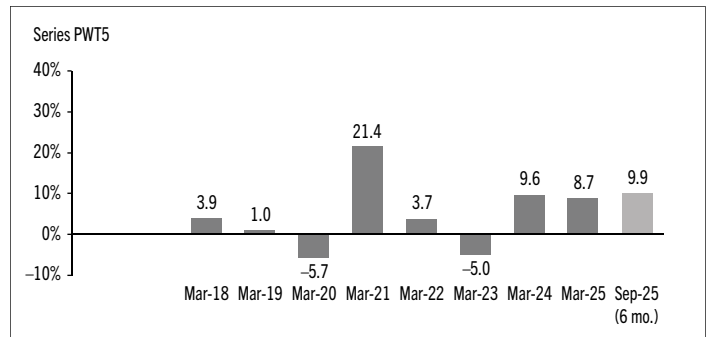
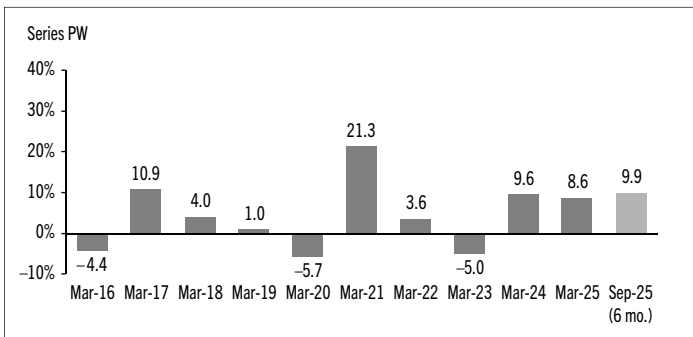
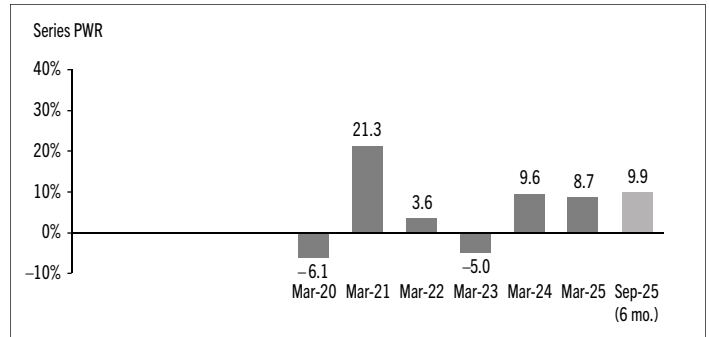
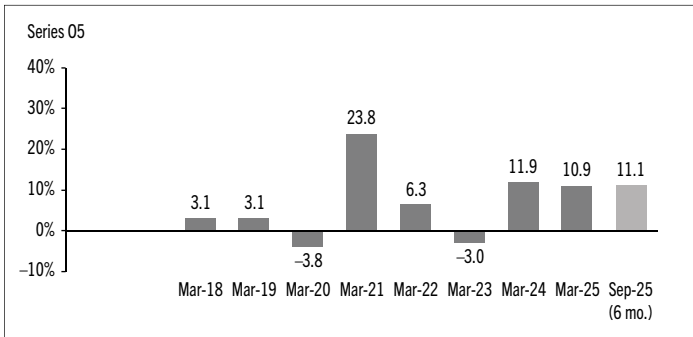
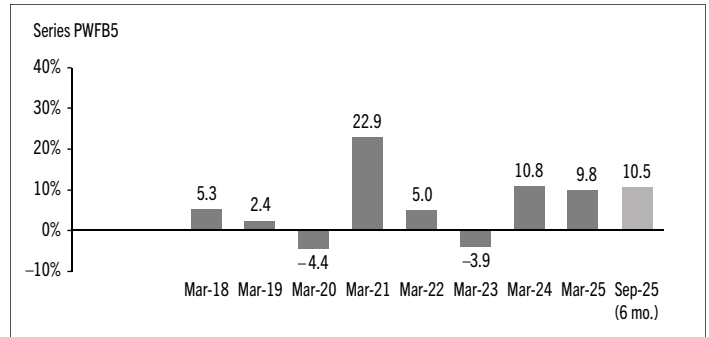
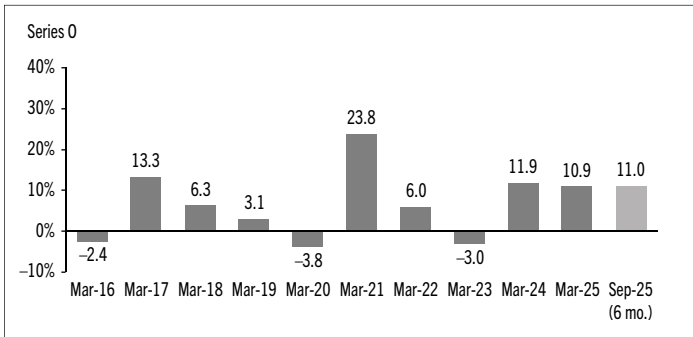
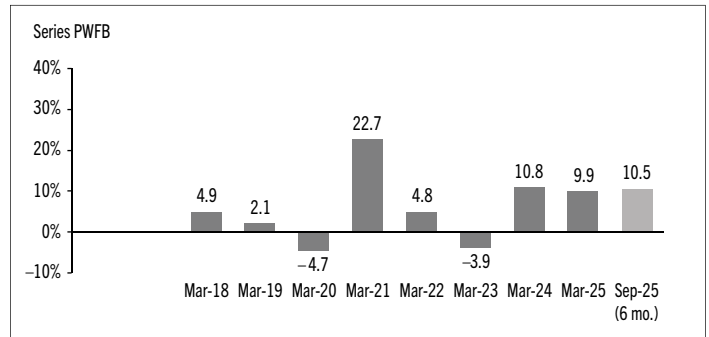
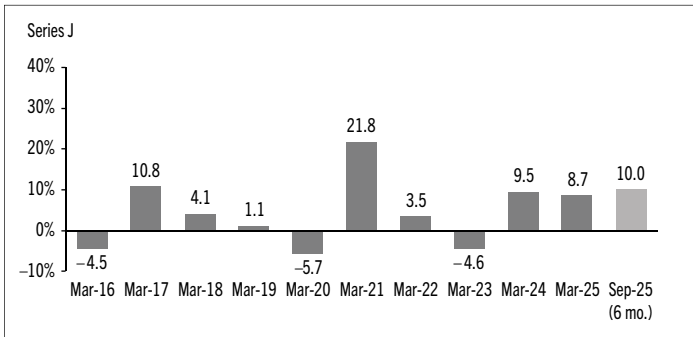
SYMMETRY MODERATE GROWTH PORTFOLIO

INTERIM MANAGEMENT REPORT OF FUND PERFORMANCE | For the Period Ended September 30, 2025



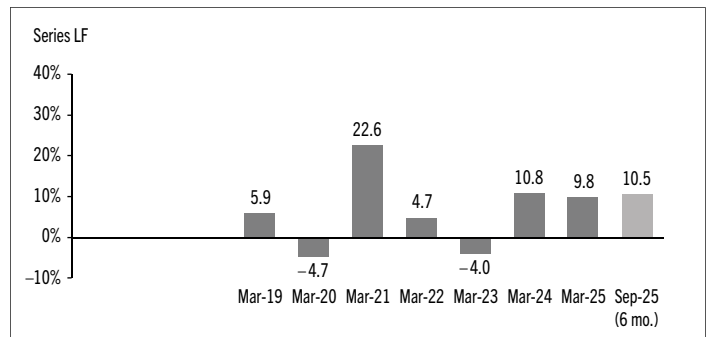
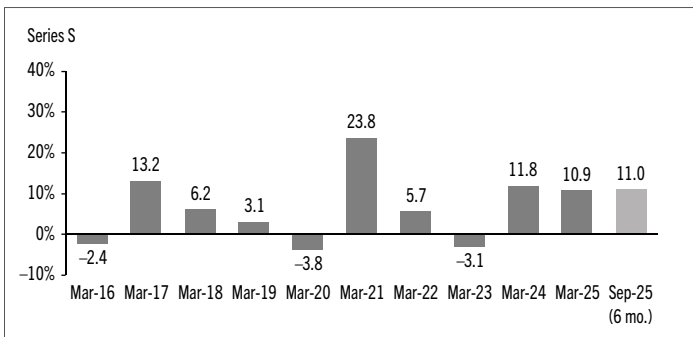
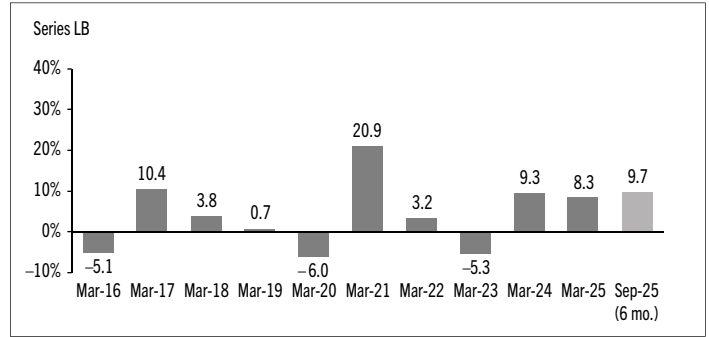
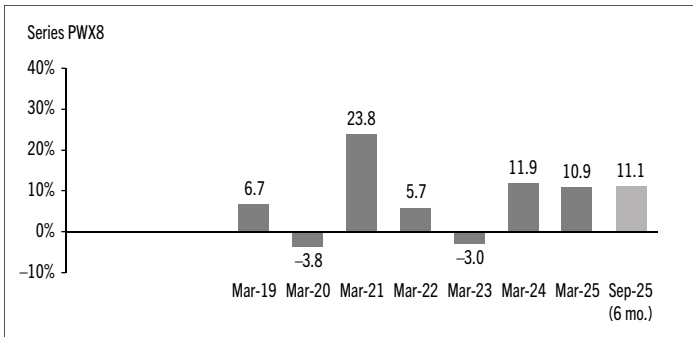
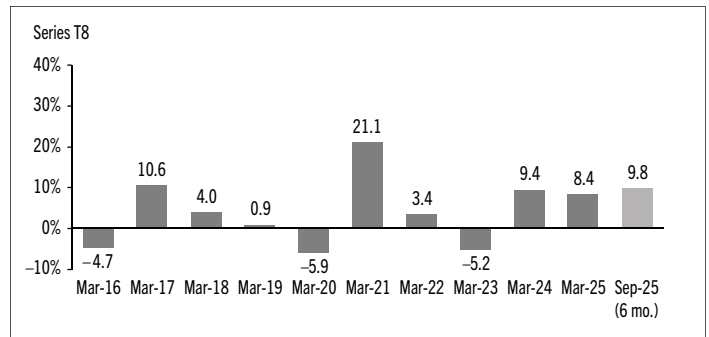
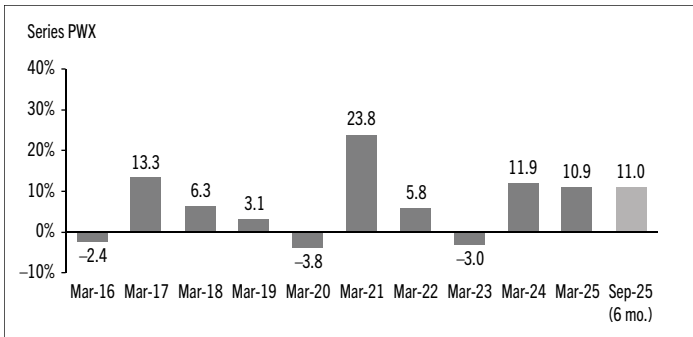
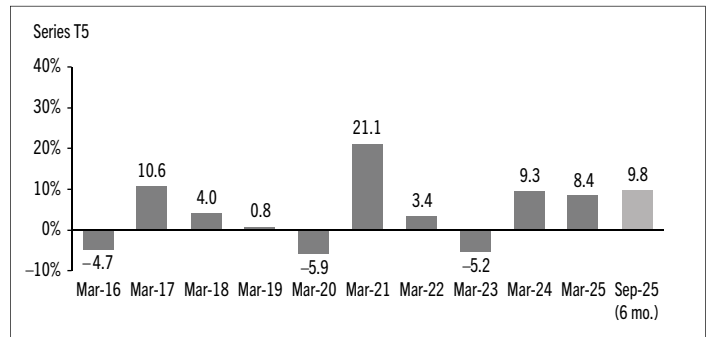
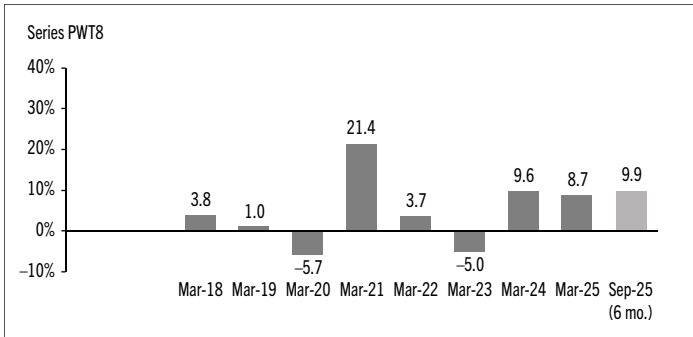
SYMMETRY MODERATE GROWTH PORTFOLIO

INTERIM MANAGEMENT REPORT OF FUND PERFORMANCE | For the Period Ended September 30, 2025



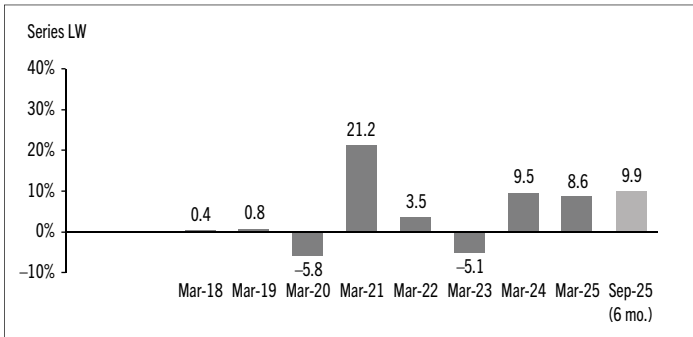
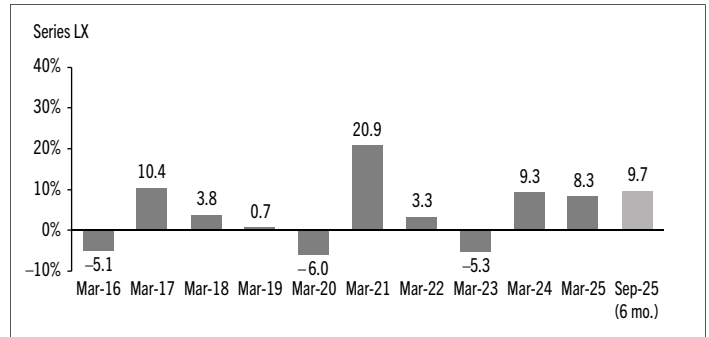
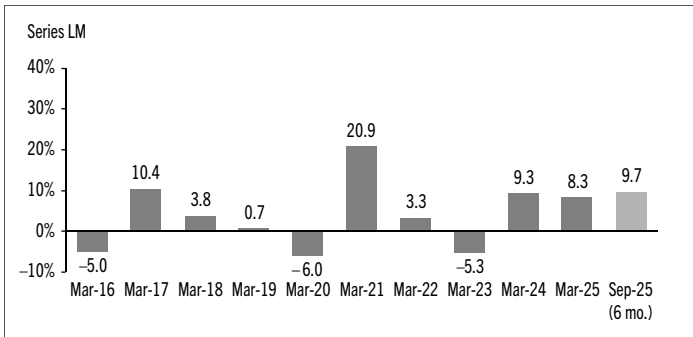
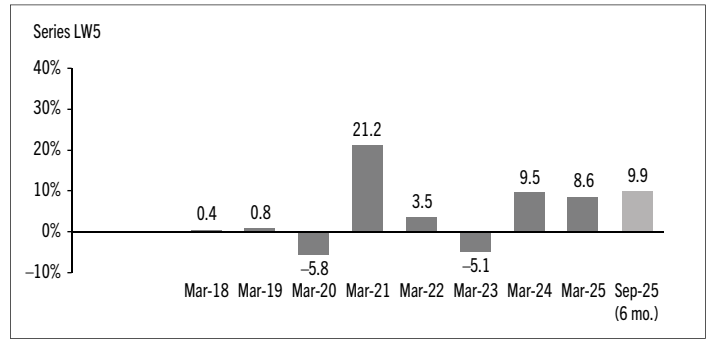
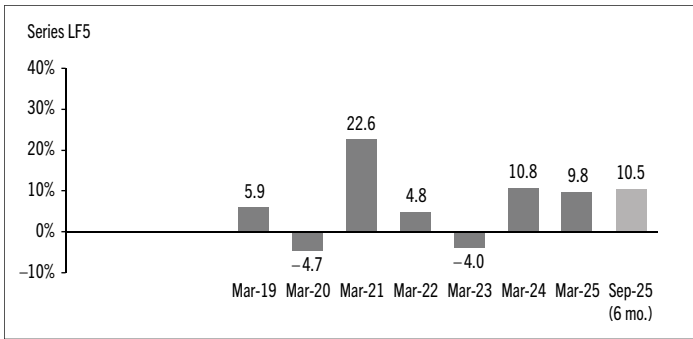
SYMMETRY MODERATE GROWTH PORTFOLIO

INTERIM MANAGEMENT REPORT OF FUND PERFORMANCE | For the Period Ended September 30, 2025



SYMMETRY MODERATE GROWTH PORTFOLIO

INTERIM MANAGEMENT REPORT OF FUND PERFORMANCE | For the Period Ended September 30, 2025



SYMMETRY MODERATE GROWTH PORTFOLIO

INTERIM MANAGEMENT REPORT OF FUND PERFORMANCE | For the Period Ended September 30, 2025

Summary of Investment Portfolio at September 30, 2025

EFFECTIVE PORTFOLIO ALLOCATION	% OF NAV
Equities	66.8
Equities	55.1
Long equity futures*	11.7
Short equity futures*	–
Bonds	45.9
Bonds	34.0
Long bond futures*	11.9
Short bond futures*	–
Mutual funds	1.1
Commodities	0.3
Long commodities futures*	0.3
Commodities	–
Short commodities futures*	–
Cash and cash equivalents	(0.4)
Other assets (liabilities)	(13.7)

EFFECTIVE REGIONAL ALLOCATION	% OF NAV
United States	52.5
Canada	41.6
Other	6.4
United Kingdom	3.1
Japan	1.8
Germany	1.7
France	1.4
Australia	1.1
Mexico	0.9
Switzerland	0.9
Netherlands	0.8
Spain	0.7
China	0.6
Poland	0.6
Cash and cash equivalents	(0.4)
Other assets (liabilities)	(13.7)

EFFECTIVE SECTOR ALLOCATION	% OF NAV
Corporate bonds	21.2
Foreign government bonds	12.1
Financials	12.1
Information technology	11.8
Equity futures	11.7
Federal bonds	7.8
Industrials	6.1
Consumer discretionary	4.7
Health care	4.4
Other	4.3
Provincial bonds	4.1
Energy	3.7
Materials	3.6
Communication services	3.5
Consumer staples	2.7
Commodities	0.3
Cash and cash equivalents	(0.4)
Other assets (liabilities)	(13.7)

* Notional values represent 11.9% of NAV for long bond futures, 11.7% of NAV for long equity futures, 0.3% of NAV for long commodities futures, –3.6% of NAV for short bond futures, –3.1% of NAV for short equity futures and –0.2% of NAV for short commodities futures.

The effective allocation shows the portfolio, regional or sector exposure of the Fund calculated by combining its direct and indirect investments.

TOP 25 LONG POSITIONS	% OF NAV
Issuer/Underlying Fund	
Mack Canadian Bond Pool Series R	21.1
Mack US Equity Pool Series R	17.9
Mack Canadian Equity Pool Series R	11.0
Mack Comprehensive Equity Pool Series R	8.0
Mack EAFE Equity Pool Series R	6.2
Mackenzie North American Corporate Bond Fund Series R	4.9
Mackenzie US Investment Grade Corporate Bond Index ETF (CAD-Hedged)	4.7
Mackenzie Broad Risk Premia Collection Fund Series R	3.6
Mackenzie Global Dividend Fund Series R	3.1
Mackenzie Enhanced Fixed Income Risk Premia Fund Series R	2.9
Mackenzie Canadian Equity Index ETF	2.8
Mackenzie Enhanced Equity Risk Premia Fund Series R	2.7
Mackenzie Sovereign Bond Fund Series R	2.4
Mackenzie International Quantitative Large Cap Fund Series R	1.7
Mackenzie Canadian Strategic Fixed Income ETF	1.4
Mackenzie Global Macro Fund Series R	1.2
Cash and cash equivalents	0.8
Mack Global Bond Pool Series R	0.8
Mackenzie Emerging Markets Bond Index ETF (CAD-Hedged)	0.7
Mackenzie US Quantitative Small Cap Fund Series R	0.6
Mackenzie Emerging Markets Large Cap Fund Series R	0.5
Mackenzie US Quantitative Large Cap Fund Series R	0.4
Mackenzie Emerging Markets Small Cap Fund Series R	0.2
Northleaf Global Private Markets Investors-B LP ⁽¹⁾	0.1
Mackenzie Global Inflation-Linked Fund Series R	–
Top long positions as a percentage of total net asset value	99.7

TOP 25 SHORT POSITIONS	% OF NAV
Issuer	
S&P/TSX 60 Index Futures	–
OMXS30 Index Futures	–
Swiss Market Index Futures	–
FTSE 100 Index Futures	–
Mini-DAX Futures	–
CAC40 Index Futures	–
MSCI Singapore Index Futures	–
SPI 200 Futures	–
Top short positions as a percentage of total net asset value	–

(1) The issuer of this security is related to the Manager.

For the prospectus and other information about the underlying fund(s) held in the portfolio, visit www.mackenzieinvestments.com or www.sedarplus.ca.

The investments and percentages may have changed since September 30, 2025, due to the ongoing portfolio transactions of the Fund. Quarterly updates of holdings are available within 60 days of the end of each quarter except for March 31, the Fund's fiscal year-end, when they are available within 90 days.

SYMMETRY MODERATE GROWTH PORTFOLIO

INTERIM MANAGEMENT REPORT OF FUND PERFORMANCE | For the Period Ended September 30, 2025

Financial Highlights

The following tables show selected key financial information about the Fund and are intended to help you understand the Fund's financial performance for each of the fiscal periods presented below. If during the period a fund or series was established or reinstated, "period" represents the period from inception or reinstatement to the end of that fiscal period. Series inception or reinstatement dates can be found under *Fund Formation and Series Information*.

THE FUND'S NET ASSETS PER SECURITY (\$)¹

Series A	Sep. 30 2025	Mar. 31 2025	Mar. 31 2024	Mar. 31 2023	Mar. 31 2022	Mar. 31 2021
Net assets, beginning of period	19.28	18.14	16.59	17.51	17.85	15.43
Increase (decrease) from operations:						
Total revenue	0.29	0.60	0.48	0.39	0.65	0.97
Total expenses	(0.23)	(0.43)	(0.38)	(0.37)	(0.42)	(0.40)
Realized gains (losses) for the period	0.39	1.04	0.10	(0.18)	0.59	0.68
Unrealized gains (losses) for the period	1.39	0.35	1.26	(0.85)	(0.16)	2.06
Total increase (decrease) from operations²	1.84	1.56	1.46	(1.01)	0.66	3.31
Distributions:						
From net investment income (excluding Canadian dividends)	–	(0.05)	–	–	(0.20)	(0.26)
From Canadian dividends	–	(0.08)	–	–	(0.45)	(0.39)
From capital gains	–	(0.25)	–	–	(0.33)	(0.17)
Return of capital	–	–	–	–	–	–
Total annual distributions³	–	(0.38)	–	–	(0.98)	(0.82)
Net assets, end of period	21.17	19.28	18.14	16.59	17.51	17.85
Series AR	Sep. 30 2025	Mar. 31 2025	Mar. 31 2024	Mar. 31 2023	Mar. 31 2022	Mar. 31 2021
Net assets, beginning of period	15.12	14.22	13.01	13.72	13.99	12.09
Increase (decrease) from operations:						
Total revenue	0.22	0.47	0.38	0.31	0.51	0.76
Total expenses	(0.18)	(0.34)	(0.30)	(0.29)	(0.33)	(0.31)
Realized gains (losses) for the period	0.34	0.80	0.15	(0.04)	0.41	0.44
Unrealized gains (losses) for the period	1.09	0.28	0.99	(0.67)	(0.13)	1.61
Total increase (decrease) from operations²	1.47	1.21	1.22	(0.69)	0.46	2.50
Distributions:						
From net investment income (excluding Canadian dividends)	–	(0.04)	–	–	(0.16)	(0.20)
From Canadian dividends	–	(0.06)	–	–	(0.35)	(0.31)
From capital gains	–	(0.20)	–	–	(0.26)	(0.13)
Return of capital	–	–	–	–	–	–
Total annual distributions³	–	(0.30)	–	–	(0.77)	(0.64)
Net assets, end of period	16.60	15.12	14.22	13.01	13.72	13.99

Series B	Sep. 30 2025	Mar. 31 2025	Mar. 31 2024	Mar. 31 2023	Mar. 31 2022	Mar. 31 2021
Net assets, beginning of period	13.28	12.49	11.43	12.05	12.29	10.62
Increase (decrease) from operations:						
Total revenue	0.20	0.41	0.33	0.27	0.45	0.67
Total expenses	(0.15)	(0.30)	(0.26)	(0.25)	(0.29)	(0.27)
Realized gains (losses) for the period	0.26	0.71	0.09	(0.15)	0.43	0.46
Unrealized gains (losses) for the period	0.96	0.24	0.87	(0.59)	(0.11)	1.42
Total increase (decrease) from operations²	1.27	1.06	1.03	(0.72)	0.48	2.28
Distributions:						
From net investment income (excluding Canadian dividends)	–	(0.03)	–	–	(0.14)	(0.18)
From Canadian dividends	–	(0.06)	–	–	(0.31)	(0.27)
From capital gains	–	(0.18)	–	–	(0.22)	(0.11)
Return of capital	–	–	–	–	–	–
Total annual distributions³	–	(0.27)	–	–	(0.67)	(0.56)
Net assets, end of period	14.58	13.28	12.49	11.43	12.05	12.29
Series C	Sep. 30 2025	Mar. 31 2025	Mar. 31 2024	Mar. 31 2023	Mar. 31 2022	Mar. 31 2021
Net assets, beginning of period	13.30	12.52	11.47	12.13	12.36	10.68
Increase (decrease) from operations:						
Total revenue	0.20	0.41	0.33	0.27	0.45	0.67
Total expenses	(0.17)	(0.32)	(0.29)	(0.28)	(0.32)	(0.29)
Realized gains (losses) for the period	0.29	0.70	0.11	(0.14)	(0.18)	0.41
Unrealized gains (losses) for the period	0.96	0.24	0.87	(0.59)	(0.11)	1.42
Total increase (decrease) from operations²	1.28	1.03	1.02	(0.74)	(0.16)	2.21
Distributions:						
From net investment income (excluding Canadian dividends)	–	(0.03)	–	–	(0.14)	(0.17)
From Canadian dividends	–	(0.05)	–	–	(0.30)	(0.26)
From capital gains	–	(0.16)	–	–	(0.21)	(0.12)
Return of capital	–	–	–	–	–	–
Total annual distributions³	–	(0.24)	–	–	(0.65)	(0.55)
Net assets, end of period	14.59	13.30	12.52	11.47	12.13	12.36

(1) These calculations are prescribed by securities regulations and are not intended to be a reconciliation between opening and closing net assets per security. This information is derived from the Fund's unaudited interim financial statements and audited annual financial statements. The net assets per security presented in the financial statements may differ from the net asset value per security calculated for fund pricing purposes. An explanation of these differences, if any, can be found in the *Notes to Financial Statements*.

(2) Net assets and distributions are based on the actual number of securities outstanding at the relevant time. The increase/decrease from operations is based on the weighted average number of securities outstanding over the fiscal period.

(3) Distributions were paid in cash/reinvested in additional securities of the Fund, or both.

SYMMETRY MODERATE GROWTH PORTFOLIO

INTERIM MANAGEMENT REPORT OF FUND PERFORMANCE | For the Period Ended September 30, 2025

THE FUND'S NET ASSETS PER SECURITY (\$)¹ (cont'd)

	Sep. 30 2025	Mar. 31 2025	Mar. 31 2024	Mar. 31 2023	Mar. 31 2022	Mar. 31 2021
Series D						
Net assets, beginning of period	13.00	12.22	11.07	11.54	11.76	10.17
Increase (decrease) from operations:						
Total revenue	0.19	0.40	0.33	0.26	0.43	0.64
Total expenses	(0.08)	(0.14)	(0.13)	(0.12)	(0.17)	(0.16)
Realized gains (losses) for the period	0.32	0.71	0.25	0.21	0.37	0.45
Unrealized gains (losses) for the period	0.94	0.24	0.86	(0.57)	(0.11)	1.36
Total increase (decrease) from operations²	1.37	1.21	1.31	(0.22)	0.52	2.29
Distributions:						
From net investment income (excluding Canadian dividends)	–	(0.05)	–	–	(0.16)	(0.20)
From Canadian dividends	–	(0.08)	(0.02)	–	(0.35)	(0.31)
From capital gains	–	(0.27)	–	–	(0.24)	(0.14)
Return of capital	–	–	–	–	–	–
Total annual distributions³	–	(0.40)	(0.02)	–	(0.75)	(0.65)
Net assets, end of period	14.36	13.00	12.22	11.07	11.54	11.76
Series DZ						
Net assets, beginning of period	13.72	12.91	11.80	12.45	12.69	10.97
Increase (decrease) from operations:						
Total revenue	0.20	0.42	0.34	0.28	0.46	0.69
Total expenses	(0.16)	(0.31)	(0.27)	(0.26)	(0.30)	(0.28)
Realized gains (losses) for the period	0.29	0.74	0.09	(0.15)	0.41	0.46
Unrealized gains (losses) for the period	0.99	0.25	0.90	(0.61)	(0.12)	1.46
Total increase (decrease) from operations²	1.32	1.10	1.06	(0.74)	0.45	2.33
Distributions:						
From net investment income (excluding Canadian dividends)	–	(0.03)	–	–	(0.15)	(0.18)
From Canadian dividends	–	(0.06)	–	–	(0.32)	(0.28)
From capital gains	–	(0.18)	–	–	(0.23)	(0.12)
Return of capital	–	–	–	–	–	–
Total annual distributions³	–	(0.27)	–	–	(0.70)	(0.58)
Net assets, end of period	15.06	13.72	12.91	11.80	12.45	12.69
Series F						
Net assets, beginning of period	19.67	18.49	16.71	17.40	17.71	15.32
Increase (decrease) from operations:						
Total revenue	0.29	0.61	0.49	0.39	0.64	0.97
Total expenses	(0.10)	(0.18)	(0.16)	(0.15)	(0.17)	(0.17)
Realized gains (losses) for the period	0.44	1.03	0.14	(0.25)	0.06	0.62
Unrealized gains (losses) for the period	1.42	0.36	1.28	(0.85)	(0.16)	2.05
Total increase (decrease) from operations²	2.05	1.82	1.75	(0.86)	0.37	3.47
Distributions:						
From net investment income (excluding Canadian dividends)	–	(0.08)	–	–	(0.26)	(0.33)
From Canadian dividends	–	(0.14)	(0.03)	–	(0.57)	(0.51)
From capital gains	–	(0.42)	–	–	(0.38)	(0.22)
Return of capital	–	–	–	–	–	–
Total annual distributions³	–	(0.64)	(0.03)	–	(1.21)	(1.06)
Net assets, end of period	21.74	19.67	18.49	16.71	17.40	17.71

	Sep. 30 2025	Mar. 31 2025	Mar. 31 2024	Mar. 31 2023	Mar. 31 2022	Mar. 31 2021
Series F5						
Net assets, beginning of period	11.19	11.03	10.46	11.52	12.06	10.68
Increase (decrease) from operations:						
Total revenue	0.16	0.36	0.30	0.25	0.43	0.66
Total expenses	(0.05)	(0.11)	(0.10)	(0.10)	(0.11)	(0.11)
Realized gains (losses) for the period	0.28	0.60	(0.06)	(0.02)	(0.04)	0.32
Unrealized gains (losses) for the period	0.80	0.21	0.78	(0.55)	(0.11)	1.40
Total increase (decrease) from operations²	1.19	1.06	0.92	(0.42)	0.17	2.27
Distributions:						
From net investment income (excluding Canadian dividends)	–	(0.05)	–	(0.02)	(0.13)	(0.12)
From Canadian dividends	–	(0.08)	(0.02)	(0.07)	(0.43)	(0.50)
From capital gains	–	(0.24)	–	–	(0.21)	(0.09)
Return of capital	(0.28)	(0.54)	(0.49)	(0.50)	(0.38)	(0.28)
Total annual distributions³	(0.28)	(0.91)	(0.51)	(0.59)	(1.15)	(0.99)
Net assets, end of period	12.06	11.19	11.03	10.46	11.52	12.06
Series F8						
Net assets, beginning of period	8.51	8.64	8.45	9.65	10.41	9.51
Increase (decrease) from operations:						
Total revenue	0.12	0.27	0.24	0.21	0.36	0.58
Total expenses	(0.04)	(0.08)	(0.08)	(0.08)	(0.10)	(0.10)
Realized gains (losses) for the period	0.21	0.47	0.08	(0.39)	(0.40)	0.35
Unrealized gains (losses) for the period	0.60	0.16	0.62	(0.45)	(0.09)	1.23
Total increase (decrease) from operations²	0.89	0.82	0.86	(0.71)	(0.23)	2.06
Distributions:						
From net investment income (excluding Canadian dividends)	–	(0.04)	–	(0.01)	(0.11)	(0.11)
From Canadian dividends	–	(0.06)	(0.01)	(0.05)	(0.37)	(0.44)
From capital gains	–	(0.19)	–	–	(0.18)	(0.07)
Return of capital	(0.35)	(0.67)	(0.65)	(0.73)	(0.64)	(0.58)
Total annual distributions³	(0.35)	(0.96)	(0.66)	(0.79)	(1.30)	(1.20)
Net assets, end of period	9.04	8.51	8.64	8.45	9.65	10.41
Series FB						
Net assets, beginning of period	12.12	11.39	10.31	10.76	10.98	9.49
Increase (decrease) from operations:						
Total revenue	0.18	0.38	0.30	0.24	0.40	0.60
Total expenses	(0.07)	(0.14)	(0.12)	(0.11)	(0.13)	(0.13)
Realized gains (losses) for the period	0.24	0.67	0.07	(0.10)	0.36	0.26
Unrealized gains (losses) for the period	0.87	0.22	0.79	(0.53)	(0.10)	1.27
Total increase (decrease) from operations²	1.22	1.13	1.04	(0.50)	0.53	2.00
Distributions:						
From net investment income (excluding Canadian dividends)	–	(0.05)	(0.01)	–	(0.16)	(0.20)
From Canadian dividends	–	(0.08)	(0.01)	–	(0.35)	(0.31)
From capital gains	–	(0.24)	–	–	(0.23)	(0.12)
Return of capital	–	–	–	–	–	–
Total annual distributions³	–	(0.37)	(0.02)	–	(0.74)	(0.63)
Net assets, end of period	13.38	12.12	11.39	10.31	10.76	10.98

SYMMETRY MODERATE GROWTH PORTFOLIO

INTERIM MANAGEMENT REPORT OF FUND PERFORMANCE | For the Period Ended September 30, 2025

THE FUND'S NET ASSETS PER SECURITY (\$)¹ (cont'd)

	Sep. 30 2025	Mar. 31 2025	Mar. 31 2024	Mar. 31 2023	Mar. 31 2022	Mar. 31 2021
Series FB5						
Net assets, beginning of period	12.31	12.14	11.52	12.71	13.33	11.82
Increase (decrease) from operations:						
Total revenue	0.18	0.39	0.33	0.28	0.48	0.74
Total expenses	(0.07)	(0.15)	(0.12)	(0.11)	(0.16)	(0.14)
Realized gains (losses) for the period	0.28	0.66	0.12	(0.05)	(0.04)	1.14
Unrealized gains (losses) for the period	0.88	0.23	0.87	(0.61)	(0.12)	1.56
Total increase (decrease) from operations²	1.27	1.13	1.20	(0.49)	0.16	3.30
Distributions:						
From net investment income (excluding Canadian dividends)	–	(0.05)	–	(0.01)	(0.14)	(0.14)
From Canadian dividends	–	(0.08)	(0.02)	(0.06)	(0.46)	(0.54)
From capital gains	–	(0.25)	–	–	(0.23)	(0.08)
Return of capital	(0.31)	(0.59)	(0.55)	(0.58)	(0.44)	(0.34)
Total annual distributions³	(0.31)	(0.97)	(0.57)	(0.65)	(1.27)	(1.10)
Net assets, end of period	13.26	12.31	12.14	11.52	12.71	13.33
Series FR						
Net assets, beginning of period	12.82	12.05	10.91	10.00	n/a	n/a
Increase (decrease) from operations:						
Total revenue	0.19	0.40	0.32	0.14	n/a	n/a
Total expenses	(0.08)	(0.15)	(0.13)	(0.06)	n/a	n/a
Realized gains (losses) for the period	0.33	0.65	0.43	0.88	n/a	n/a
Unrealized gains (losses) for the period	0.93	0.23	0.85	(0.31)	n/a	n/a
Total increase (decrease) from operations²	1.37	1.13	1.47	0.65	n/a	n/a
Distributions:						
From net investment income (excluding Canadian dividends)	–	(0.05)	(0.01)	–	n/a	n/a
From Canadian dividends	–	(0.08)	(0.01)	–	n/a	n/a
From capital gains	–	(0.26)	–	–	n/a	n/a
Return of capital	–	–	–	–	n/a	n/a
Total annual distributions³	–	(0.39)	(0.02)	–	n/a	n/a
Net assets, end of period	14.15	12.82	12.05	10.91	n/a	n/a
Series G						
Net assets, beginning of period	17.20	16.18	14.71	15.42	15.72	13.59
Increase (decrease) from operations:						
Total revenue	0.26	0.53	0.43	0.35	0.57	0.86
Total expenses	(0.15)	(0.28)	(0.25)	(0.24)	(0.27)	(0.26)
Realized gains (losses) for the period	0.01	0.91	0.04	(0.05)	0.48	0.46
Unrealized gains (losses) for the period	1.24	0.31	1.12	(0.75)	(0.15)	1.82
Total increase (decrease) from operations²	1.36	1.47	1.34	(0.69)	0.63	2.88
Distributions:						
From net investment income (excluding Canadian dividends)	–	(0.06)	–	–	(0.20)	(0.26)
From Canadian dividends	–	(0.09)	(0.01)	–	(0.45)	(0.40)
From capital gains	–	(0.29)	–	–	(0.31)	(0.17)
Return of capital	–	–	–	–	–	–
Total annual distributions³	–	(0.44)	(0.01)	–	(0.96)	(0.83)
Net assets, end of period	18.95	17.20	16.18	14.71	15.42	15.72

	Sep. 30 2025	Mar. 31 2025	Mar. 31 2024	Mar. 31 2023	Mar. 31 2022	Mar. 31 2021
Series J						
Net assets, beginning of period	15.10	14.19	12.96	13.58	13.84	11.95
Increase (decrease) from operations:						
Total revenue	0.22	0.47	0.38	0.31	0.50	0.75
Total expenses	(0.15)	(0.30)	(0.28)	(0.20)	(0.31)	(0.22)
Realized gains (losses) for the period	0.35	0.78	0.14	(0.07)	0.41	0.44
Unrealized gains (losses) for the period	1.09	0.28	0.99	(0.66)	(0.13)	1.60
Total increase (decrease) from operations²	1.51	1.23	1.23	(0.62)	0.47	2.57
Distributions:						
From net investment income (excluding Canadian dividends)	–	(0.04)	–	–	(0.16)	(0.22)
From Canadian dividends	–	(0.07)	–	–	(0.35)	(0.34)
From capital gains	–	(0.22)	–	–	(0.26)	(0.15)
Return of capital	–	–	–	–	–	–
Total annual distributions³	–	(0.33)	–	–	(0.77)	(0.71)
Net assets, end of period	16.61	15.10	14.19	12.96	13.58	13.84
Series O						
Net assets, beginning of period	15.67	14.73	13.21	13.63	13.84	11.98
Increase (decrease) from operations:						
Total revenue	0.23	0.49	0.39	0.31	0.50	0.76
Total expenses	–	–	–	–	–	–
Realized gains (losses) for the period	0.37	0.82	0.11	(0.10)	(0.21)	0.46
Unrealized gains (losses) for the period	1.13	0.29	1.02	(0.67)	(0.13)	1.61
Total increase (decrease) from operations²	1.73	1.60	1.52	(0.46)	0.16	2.83
Distributions:						
From net investment income (excluding Canadian dividends)	–	(0.08)	–	–	(0.23)	(0.30)
From Canadian dividends	–	(0.14)	(0.05)	–	(0.52)	(0.47)
From capital gains	–	(0.43)	–	–	(0.33)	(0.20)
Return of capital	–	–	–	–	–	–
Total annual distributions³	–	(0.65)	(0.05)	–	(1.08)	(0.97)
Net assets, end of period	17.41	15.67	14.73	13.21	13.63	13.84
Series O5						
Net assets, beginning of period	13.50	13.30	12.49	13.63	14.10	12.37
Increase (decrease) from operations:						
Total revenue	0.20	0.43	0.36	0.30	0.50	0.78
Total expenses	–	–	–	–	–	–
Realized gains (losses) for the period	0.29	0.73	0.12	(1.85)	(0.44)	3.66
Unrealized gains (losses) for the period	0.97	0.25	0.94	(0.65)	(0.13)	1.65
Total increase (decrease) from operations²	1.46	1.41	1.42	(2.20)	(0.07)	6.09
Distributions:						
From net investment income (excluding Canadian dividends)	–	(0.07)	–	(0.04)	(0.17)	(0.15)
From Canadian dividends	–	(0.12)	(0.03)	(0.12)	(0.62)	(0.71)
From capital gains	–	(0.38)	–	–	(0.26)	(0.09)
Return of capital	(0.34)	(0.65)	(0.58)	(0.54)	(0.33)	(0.21)
Total annual distributions³	(0.34)	(1.22)	(0.61)	(0.70)	(1.38)	(1.16)
Net assets, end of period	14.63	13.50	13.30	12.49	13.63	14.10

SYMMETRY MODERATE GROWTH PORTFOLIO

INTERIM MANAGEMENT REPORT OF FUND PERFORMANCE | For the Period Ended September 30, 2025

THE FUND'S NET ASSETS PER SECURITY (\$)¹ (cont'd)

	Sep. 30 2025	Mar. 31 2025	Mar. 31 2024	Mar. 31 2023	Mar. 31 2022	Mar. 31 2021
Series PW						
Net assets, beginning of period	13.20	12.42	11.33	11.93	12.15	10.51
Increase (decrease) from operations:						
Total revenue	0.20	0.41	0.33	0.27	0.44	0.66
Total expenses	(0.14)	(0.27)	(0.24)	(0.23)	(0.26)	(0.24)
Realized gains (losses) for the period	0.28	0.69	0.07	(0.09)	0.23	0.39
Unrealized gains (losses) for the period	0.95	0.24	0.86	(0.58)	(0.11)	1.40
Total increase (decrease) from operations²	1.29	1.07	1.02	(0.63)	0.30	2.21
Distributions:						
From net investment income (excluding Canadian dividends)	–	(0.04)	–	–	(0.15)	(0.18)
From Canadian dividends	–	(0.06)	–	–	(0.32)	(0.28)
From capital gains	–	(0.19)	–	–	(0.22)	(0.13)
Return of capital	–	–	–	–	–	–
Total annual distributions³	–	(0.29)	–	–	(0.69)	(0.59)
Net assets, end of period	14.51	13.20	12.42	11.33	11.93	12.15
Series PWFB						
Net assets, beginning of period	11.75	11.04	9.98	10.39	10.58	9.15
Increase (decrease) from operations:						
Total revenue	0.17	0.36	0.29	0.24	0.38	0.58
Total expenses	(0.06)	(0.11)	(0.10)	(0.09)	(0.10)	(0.10)
Realized gains (losses) for the period	0.26	0.62	0.03	(0.13)	0.03	0.29
Unrealized gains (losses) for the period	0.85	0.22	0.76	(0.51)	(0.10)	1.23
Total increase (decrease) from operations²	1.22	1.09	0.98	(0.49)	0.21	2.00
Distributions:						
From net investment income (excluding Canadian dividends)	–	(0.05)	–	–	(0.15)	(0.20)
From Canadian dividends	–	(0.08)	(0.02)	–	(0.34)	(0.31)
From capital gains	–	(0.25)	–	–	(0.23)	(0.13)
Return of capital	–	–	–	–	–	–
Total annual distributions³	–	(0.38)	(0.02)	–	(0.72)	(0.64)
Net assets, end of period	12.98	11.75	11.04	9.98	10.39	10.58
Series PWFB5						
Net assets, beginning of period	12.97	12.79	12.12	13.36	13.96	12.34
Increase (decrease) from operations:						
Total revenue	0.19	0.41	0.35	0.29	0.50	0.77
Total expenses	(0.06)	(0.13)	(0.11)	(0.11)	(0.13)	(0.10)
Realized gains (losses) for the period	0.27	0.72	0.11	(0.29)	(0.64)	0.44
Unrealized gains (losses) for the period	0.93	0.24	0.91	(0.63)	(0.13)	1.62
Total increase (decrease) from operations²	1.33	1.24	1.26	(0.74)	(0.40)	2.73
Distributions:						
From net investment income (excluding Canadian dividends)	–	(0.05)	–	(0.02)	(0.15)	(0.14)
From Canadian dividends	–	(0.09)	(0.02)	(0.08)	(0.51)	(0.61)
From capital gains	–	(0.28)	–	–	(0.24)	(0.10)
Return of capital	(0.33)	(0.63)	(0.57)	(0.58)	(0.44)	(0.30)
Total annual distributions³	(0.33)	(1.05)	(0.59)	(0.68)	(1.34)	(1.15)
Net assets, end of period	13.98	12.97	12.79	12.12	13.36	13.96

	Sep. 30 2025	Mar. 31 2025	Mar. 31 2024	Mar. 31 2023	Mar. 31 2022	Mar. 31 2021
Series PWR						
Net assets, beginning of period	11.28	10.61	9.68	10.19	10.38	8.98
Increase (decrease) from operations:						
Total revenue	0.17	0.35	0.28	0.23	0.38	0.57
Total expenses	(0.12)	(0.23)	(0.20)	(0.19)	(0.22)	(0.21)
Realized gains (losses) for the period	0.28	0.55	0.13	0.06	0.13	0.11
Unrealized gains (losses) for the period	0.81	0.21	0.74	(0.50)	(0.10)	1.21
Total increase (decrease) from operations²	1.14	0.88	0.95	(0.40)	0.19	1.68
Distributions:						
From net investment income (excluding Canadian dividends)	–	(0.03)	–	–	(0.12)	(0.16)
From Canadian dividends	–	(0.05)	–	–	(0.28)	(0.24)
From capital gains	–	(0.17)	–	–	(0.19)	(0.10)
Return of capital	–	–	–	–	–	–
Total annual distributions³	–	(0.25)	–	–	(0.59)	(0.50)
Net assets, end of period	12.40	11.28	10.61	9.68	10.19	10.38
Series PWT5						
Net assets, beginning of period	11.72	11.56	11.08	12.35	13.05	11.67
Increase (decrease) from operations:						
Total revenue	0.17	0.37	0.31	0.27	0.46	0.72
Total expenses	(0.12)	(0.24)	(0.22)	(0.22)	(0.27)	(0.26)
Realized gains (losses) for the period	0.26	0.63	0.11	(0.09)	(0.18)	0.35
Unrealized gains (losses) for the period	0.83	0.22	0.83	(0.58)	(0.12)	1.53
Total increase (decrease) from operations²	1.14	0.98	1.03	(0.62)	(0.11)	2.34
Distributions:						
From net investment income (excluding Canadian dividends)	–	(0.03)	–	(0.01)	(0.12)	(0.13)
From Canadian dividends	–	(0.06)	(0.01)	(0.03)	(0.37)	(0.42)
From capital gains	–	(0.17)	–	–	(0.22)	(0.09)
Return of capital	(0.30)	(0.57)	(0.53)	(0.59)	(0.51)	(0.43)
Total annual distributions³	(0.30)	(0.83)	(0.54)	(0.63)	(1.22)	(1.07)
Net assets, end of period	12.56	11.72	11.56	11.08	12.35	13.05
Series PWT8						
Net assets, beginning of period	9.26	9.41	9.31	10.76	11.72	10.81
Increase (decrease) from operations:						
Total revenue	0.13	0.30	0.26	0.23	0.41	0.66
Total expenses	(0.10)	(0.19)	(0.18)	(0.19)	(0.23)	(0.23)
Realized gains (losses) for the period	0.21	0.49	0.07	(0.13)	(0.48)	0.48
Unrealized gains (losses) for the period	0.65	0.18	0.68	(0.50)	(0.10)	1.39
Total increase (decrease) from operations²	0.89	0.78	0.83	(0.59)	(0.40)	2.30
Distributions:						
From net investment income (excluding Canadian dividends)	–	(0.03)	–	–	(0.11)	(0.12)
From Canadian dividends	–	(0.04)	(0.01)	(0.02)	(0.33)	(0.39)
From capital gains	–	(0.14)	–	–	(0.19)	(0.07)
Return of capital	(0.38)	(0.74)	(0.72)	(0.86)	(0.81)	(0.77)
Total annual distributions³	(0.38)	(0.95)	(0.73)	(0.88)	(1.44)	(1.35)
Net assets, end of period	9.77	9.26	9.41	9.31	10.76	11.72

SYMMETRY MODERATE GROWTH PORTFOLIO

INTERIM MANAGEMENT REPORT OF FUND PERFORMANCE | For the Period Ended September 30, 2025

THE FUND'S NET ASSETS PER SECURITY (\$)¹ (cont'd)

	Sep. 30 2025	Mar. 31 2025	Mar. 31 2024	Mar. 31 2023	Mar. 31 2022	Mar. 31 2021
Series PWX						
Net assets, beginning of period	13.72	12.89	11.56	11.93	12.14	10.51
Increase (decrease) from operations:						
Total revenue	0.20	0.43	0.34	0.27	0.44	0.66
Total expenses	–	–	–	–	–	–
Realized gains (losses) for the period	0.30	0.72	0.09	(0.10)	0.25	0.37
Unrealized gains (losses) for the period	0.99	0.25	0.89	(0.59)	(0.11)	1.41
Total increase (decrease) from operations²	1.49	1.40	1.32	(0.42)	0.58	2.44
Distributions:						
From net investment income (excluding Canadian dividends)	–	(0.07)	–	–	(0.20)	(0.27)
From Canadian dividends	–	(0.12)	(0.04)	–	(0.45)	(0.41)
From capital gains	–	(0.38)	–	–	(0.30)	(0.17)
Return of capital	–	–	–	–	–	–
Total annual distributions³	–	(0.57)	(0.04)	–	(0.95)	(0.85)
Net assets, end of period	15.24	13.72	12.89	11.56	11.93	12.14
Series PWX8						
Net assets, beginning of period	12.14	12.31	11.92	13.49	14.46	13.10
Increase (decrease) from operations:						
Total revenue	0.18	0.39	0.34	0.29	0.51	0.80
Total expenses	–	–	–	–	–	–
Realized gains (losses) for the period	0.27	0.66	0.13	(0.06)	0.40	0.47
Unrealized gains (losses) for the period	0.86	0.23	0.89	(0.63)	(0.13)	1.70
Total increase (decrease) from operations²	1.31	1.28	1.36	(0.40)	0.78	2.97
Distributions:						
From net investment income (excluding Canadian dividends)	–	(0.07)	–	(0.04)	(0.17)	(0.15)
From Canadian dividends	–	(0.11)	(0.03)	(0.12)	(0.63)	(0.74)
From capital gains	–	(0.34)	–	–	(0.26)	(0.10)
Return of capital	(0.49)	(0.96)	(0.91)	(0.94)	(0.78)	(0.67)
Total annual distributions³	(0.49)	(1.48)	(0.94)	(1.10)	(1.84)	(1.66)
Net assets, end of period	12.95	12.14	12.31	11.92	13.49	14.46
Series S						
Net assets, beginning of period	14.97	14.06	12.65	13.25	13.46	11.64
Increase (decrease) from operations:						
Total revenue	0.22	0.47	0.37	0.30	0.49	0.73
Total expenses	–	–	–	–	–	(0.01)
Realized gains (losses) for the period	0.31	0.77	0.16	(0.01)	0.34	0.39
Unrealized gains (losses) for the period	1.08	0.27	0.98	(0.65)	(0.12)	1.55
Total increase (decrease) from operations²	1.61	1.51	1.51	(0.36)	0.71	2.66
Distributions:						
From net investment income (excluding Canadian dividends)	–	(0.08)	(0.01)	(0.04)	(0.16)	(0.14)
From Canadian dividends	–	(0.13)	(0.07)	(0.15)	(0.59)	(0.67)
From capital gains	–	(0.41)	–	–	(0.25)	(0.09)
Return of capital	–	–	–	–	–	–
Total annual distributions³	–	(0.62)	(0.08)	(0.19)	(1.00)	(0.90)
Net assets, end of period	16.62	14.97	14.06	12.65	13.25	13.46

	Sep. 30 2025	Mar. 31 2025	Mar. 31 2024	Mar. 31 2023	Mar. 31 2022	Mar. 31 2021
Series T5						
Net assets, beginning of period	10.66	10.53	10.12	11.31	11.98	10.73
Increase (decrease) from operations:						
Total revenue	0.16	0.34	0.29	0.25	0.43	0.66
Total expenses	(0.12)	(0.25)	(0.23)	(0.23)	(0.28)	(0.27)
Realized gains (losses) for the period	0.19	0.62	0.05	0.03	0.01	0.59
Unrealized gains (losses) for the period	0.76	0.20	0.75	(0.54)	(0.11)	1.40
Total increase (decrease) from operations²	0.99	0.91	0.86	(0.49)	0.05	2.38
Distributions:						
From net investment income (excluding Canadian dividends)	–	(0.03)	–	–	(0.11)	(0.12)
From Canadian dividends	–	(0.04)	(0.01)	(0.01)	(0.32)	(0.36)
From capital gains	–	(0.14)	–	–	(0.20)	(0.07)
Return of capital	(0.27)	(0.52)	(0.49)	(0.57)	(0.48)	(0.43)
Total annual distributions³	(0.27)	(0.73)	(0.50)	(0.58)	(1.11)	(0.98)
Net assets, end of period	11.42	10.66	10.53	10.12	11.31	11.98
Series T8						
Net assets, beginning of period	7.85	7.99	7.92	9.17	10.02	9.27
Increase (decrease) from operations:						
Total revenue	0.11	0.25	0.22	0.20	0.35	0.56
Total expenses	(0.09)	(0.18)	(0.18)	(0.18)	(0.23)	(0.23)
Realized gains (losses) for the period	0.17	0.45	0.06	(0.15)	0.05	0.39
Unrealized gains (losses) for the period	0.55	0.15	0.58	(0.43)	(0.09)	1.19
Total increase (decrease) from operations²	0.74	0.67	0.68	(0.56)	0.08	1.91
Distributions:						
From net investment income (excluding Canadian dividends)	–	(0.02)	–	–	(0.09)	(0.10)
From Canadian dividends	–	(0.03)	(0.01)	(0.01)	(0.27)	(0.30)
From capital gains	–	(0.11)	–	–	(0.15)	(0.07)
Return of capital	(0.32)	(0.63)	(0.61)	(0.74)	(0.71)	(0.68)
Total annual distributions³	(0.32)	(0.79)	(0.62)	(0.75)	(1.22)	(1.15)
Net assets, end of period	8.28	7.85	7.99	7.92	9.17	10.02
Series LB						
Net assets, beginning of period	14.30	13.45	12.31	13.00	13.25	11.46
Increase (decrease) from operations:						
Total revenue	0.21	0.44	0.36	0.29	0.48	0.72
Total expenses	(0.17)	(0.33)	(0.29)	(0.28)	(0.32)	(0.31)
Realized gains (losses) for the period	0.24	0.77	0.07	(0.12)	0.41	0.48
Unrealized gains (losses) for the period	1.03	0.26	0.94	(0.63)	(0.12)	1.53
Total increase (decrease) from operations²	1.31	1.14	1.08	(0.74)	0.45	2.42
Distributions:						
From net investment income (excluding Canadian dividends)	–	(0.03)	–	–	(0.15)	(0.19)
From Canadian dividends	–	(0.06)	–	–	(0.33)	(0.29)
From capital gains	–	(0.18)	–	–	(0.24)	(0.12)
Return of capital	–	–	–	–	–	–
Total annual distributions³	–	(0.27)	–	–	(0.72)	(0.60)
Net assets, end of period	15.69	14.30	13.45	12.31	13.00	13.25

SYMMETRY MODERATE GROWTH PORTFOLIO

INTERIM MANAGEMENT REPORT OF FUND PERFORMANCE | For the Period Ended September 30, 2025

THE FUND'S NET ASSETS PER SECURITY (\$)¹ (cont'd)

	Sep. 30 2025	Mar. 31 2025	Mar. 31 2024	Mar. 31 2023	Mar. 31 2022	Mar. 31 2021
Series LF						
Net assets, beginning of period	12.09	11.36	10.28	10.70	10.89	9.42
Increase (decrease) from operations:						
Total revenue	0.18	0.38	0.30	0.24	0.40	0.60
Total expenses	(0.06)	(0.12)	(0.10)	(0.10)	(0.11)	(0.11)
Realized gains (losses) for the period	0.27	0.63	0.02	(0.17)	0.01	0.27
Unrealized gains (losses) for the period	0.87	0.22	0.79	(0.52)	(0.10)	1.26
Total increase (decrease) from operations²	1.26	1.11	1.01	(0.55)	0.20	2.02
Distributions:						
From net investment income (excluding Canadian dividends)	–	(0.05)	–	–	(0.16)	(0.20)
From Canadian dividends	–	(0.08)	(0.02)	–	(0.35)	(0.31)
From capital gains	–	(0.26)	–	–	(0.23)	(0.14)
Return of capital	–	–	–	–	–	–
Total annual distributions³	–	(0.39)	(0.02)	–	(0.74)	(0.65)
Net assets, end of period	13.36	12.09	11.36	10.28	10.70	10.89
Series LF5						
Net assets, beginning of period	14.23	14.03	13.31	14.67	15.31	13.55
Increase (decrease) from operations:						
Total revenue	0.21	0.45	0.38	0.32	0.55	0.84
Total expenses	(0.07)	(0.14)	(0.13)	(0.13)	(0.15)	(0.15)
Realized gains (losses) for the period	0.31	0.84	(0.16)	(0.12)	(0.35)	0.31
Unrealized gains (losses) for the period	1.02	0.27	1.00	(0.70)	(0.14)	1.79
Total increase (decrease) from operations²	1.47	1.42	1.09	(0.63)	(0.09)	2.79
Distributions:						
From net investment income (excluding Canadian dividends)	–	(0.06)	–	(0.02)	(0.15)	(0.16)
From Canadian dividends	–	(0.10)	(0.02)	(0.08)	(0.51)	(0.64)
From capital gains	–	(0.31)	–	–	(0.26)	(0.09)
Return of capital	(0.36)	(0.68)	(0.63)	(0.65)	(0.49)	(0.37)
Total annual distributions³	(0.36)	(1.15)	(0.65)	(0.75)	(1.41)	(1.26)
Net assets, end of period	15.34	14.23	14.03	13.31	14.67	15.31
Series LM						
Net assets, beginning of period	7.64	7.54	7.25	8.11	8.60	7.71
Increase (decrease) from operations:						
Total revenue	0.11	0.24	0.20	0.18	0.31	0.48
Total expenses	(0.09)	(0.18)	(0.17)	(0.17)	(0.21)	(0.20)
Realized gains (losses) for the period	0.15	0.43	0.02	(0.10)	0.30	0.35
Unrealized gains (losses) for the period	0.54	0.14	0.54	(0.38)	(0.08)	1.01
Total increase (decrease) from operations²	0.71	0.63	0.59	(0.47)	0.32	1.64
Distributions:						
From net investment income (excluding Canadian dividends)	–	(0.02)	–	–	(0.08)	(0.08)
From Canadian dividends	–	(0.03)	(0.01)	(0.01)	(0.22)	(0.25)
From capital gains	–	(0.10)	–	–	(0.14)	(0.06)
Return of capital	(0.19)	(0.37)	(0.35)	(0.40)	(0.35)	(0.31)
Total annual distributions³	(0.19)	(0.52)	(0.36)	(0.41)	(0.79)	(0.70)
Net assets, end of period	8.18	7.64	7.54	7.25	8.11	8.60

	Sep. 30 2025	Mar. 31 2025	Mar. 31 2024	Mar. 31 2023	Mar. 31 2022	Mar. 31 2021
Series LW						
Net assets, beginning of period	11.00	10.35	9.45	9.95	10.15	8.77
Increase (decrease) from operations:						
Total revenue	0.16	0.34	0.27	0.22	0.37	0.55
Total expenses	(0.12)	(0.23)	(0.20)	(0.20)	(0.22)	(0.21)
Realized gains (losses) for the period	0.27	0.57	0.01	(0.10)	0.23	0.34
Unrealized gains (losses) for the period	0.79	0.20	0.72	(0.48)	(0.09)	1.17
Total increase (decrease) from operations²	1.10	0.88	0.80	(0.56)	0.29	1.85
Distributions:						
From net investment income (excluding Canadian dividends)	–	(0.03)	–	–	(0.12)	(0.15)
From Canadian dividends	–	(0.05)	–	–	(0.26)	(0.23)
From capital gains	–	(0.15)	–	–	(0.19)	(0.10)
Return of capital	–	–	–	–	–	–
Total annual distributions³	–	(0.23)	–	–	(0.57)	(0.48)
Net assets, end of period	12.09	11.00	10.35	9.45	9.95	10.15
Series LW5						
Net assets, beginning of period	11.72	11.57	11.10	12.38	13.10	11.73
Increase (decrease) from operations:						
Total revenue	0.17	0.37	0.31	0.27	0.47	0.72
Total expenses	(0.13)	(0.25)	(0.23)	(0.24)	(0.28)	(0.28)
Realized gains (losses) for the period	0.26	0.64	0.01	(0.13)	0.29	0.48
Unrealized gains (losses) for the period	0.83	0.22	0.83	(0.59)	(0.12)	1.53
Total increase (decrease) from operations²	1.13	0.98	0.92	(0.69)	0.36	2.45
Distributions:						
From net investment income (excluding Canadian dividends)	–	(0.03)	–	–	(0.12)	(0.13)
From Canadian dividends	–	(0.05)	(0.01)	(0.02)	(0.36)	(0.41)
From capital gains	–	(0.17)	–	–	(0.22)	(0.08)
Return of capital	(0.30)	(0.57)	(0.53)	(0.61)	(0.52)	(0.45)
Total annual distributions³	(0.30)	(0.82)	(0.54)	(0.63)	(1.22)	(1.07)
Net assets, end of period	12.56	11.72	11.57	11.10	12.38	13.10
Series LX						
Net assets, beginning of period	10.86	10.72	10.31	11.54	12.23	10.97
Increase (decrease) from operations:						
Total revenue	0.16	0.34	0.29	0.25	0.44	0.68
Total expenses	(0.13)	(0.26)	(0.24)	(0.24)	(0.29)	(0.29)
Realized gains (losses) for the period	0.20	0.62	0.06	(0.18)	0.33	0.48
Unrealized gains (losses) for the period	0.77	0.20	0.77	(0.54)	(0.11)	1.43
Total increase (decrease) from operations²	1.00	0.90	0.88	(0.71)	0.37	2.30
Distributions:						
From net investment income (excluding Canadian dividends)	–	(0.03)	–	–	(0.11)	(0.12)
From Canadian dividends	–	(0.04)	(0.01)	(0.01)	(0.32)	(0.35)
From capital gains	–	(0.14)	–	–	(0.20)	(0.08)
Return of capital	(0.27)	(0.53)	(0.50)	(0.58)	(0.50)	(0.45)
Total annual distributions³	(0.27)	(0.74)	(0.51)	(0.59)	(1.13)	(1.00)
Net assets, end of period	11.63	10.86	10.72	10.31	11.54	12.23

SYMMETRY MODERATE GROWTH PORTFOLIO

INTERIM MANAGEMENT REPORT OF FUND PERFORMANCE | For the Period Ended September 30, 2025

RATIOS AND SUPPLEMENTAL DATA

	Sep. 30 2025	Mar. 31 2025	Mar. 31 2024	Mar. 31 2023	Mar. 31 2022	Mar. 31 2021
Series A						
Total net asset value (\$000) ¹	338,855	348,711	400,900	433,546	518,310	566,309
Securities outstanding (000) ¹	16,006	18,083	22,094	26,129	29,607	31,734
Management expense ratio (%) ²	2.29	2.29	2.29	2.28	2.29	2.29
Management expense ratio before waivers or absorptions (%) ²	2.31	2.30	2.30	2.29	2.30	2.30
Trading expense ratio (%) ³	0.05	0.05	0.06	0.07	0.11	0.13
Portfolio turnover rate (%) ⁴	9.49	21.80	9.59	13.74	15.46	34.20
Net asset value per security (\$)	21.17	19.28	18.14	16.59	17.51	17.85
Series AR						
Total net asset value (\$000) ¹	108,724	105,061	105,010	96,435	99,420	94,884
Securities outstanding (000) ¹	6,550	6,949	7,382	7,414	7,246	6,784
Management expense ratio (%) ²	2.27	2.27	2.27	2.27	2.28	2.28
Management expense ratio before waivers or absorptions (%) ²	2.29	2.29	2.28	2.28	2.29	2.29
Trading expense ratio (%) ³	0.05	0.05	0.06	0.07	0.11	0.13
Portfolio turnover rate (%) ⁴	9.49	21.80	9.59	13.74	15.46	34.20
Net asset value per security (\$)	16.60	15.12	14.23	13.01	13.72	13.99
Series B						
Total net asset value (\$000) ¹	10,621	10,737	11,887	12,504	15,946	18,176
Securities outstanding (000) ¹	728	809	951	1,094	1,323	1,479
Management expense ratio (%) ²	2.27	2.27	2.28	2.27	2.29	2.29
Management expense ratio before waivers or absorptions (%) ²	2.29	2.29	2.29	2.28	2.29	2.30
Trading expense ratio (%) ³	0.05	0.05	0.06	0.07	0.11	0.13
Portfolio turnover rate (%) ⁴	9.49	21.80	9.59	13.74	15.46	34.20
Net asset value per security (\$)	14.58	13.28	12.50	11.43	12.05	12.29
Series C						
Total net asset value (\$000) ¹	437	410	455	457	545	195
Securities outstanding (000) ¹	30	31	36	40	45	16
Management expense ratio (%) ²	2.49	2.49	2.49	2.48	2.49	2.45
Management expense ratio before waivers or absorptions (%) ²	2.51	2.51	2.50	2.49	2.49	2.46
Trading expense ratio (%) ³	0.05	0.05	0.06	0.07	0.11	0.13
Portfolio turnover rate (%) ⁴	9.49	21.80	9.59	13.74	15.46	34.20
Net asset value per security (\$)	14.59	13.30	12.52	11.47	12.13	12.36
Series D						
Total net asset value (\$000) ¹	8,664	7,859	6,783	4,474	1,184	1,224
Securities outstanding (000) ¹	603	604	555	404	103	104
Management expense ratio (%) ²	1.12	1.12	1.13	1.13	1.42	1.42
Management expense ratio before waivers or absorptions (%) ²	1.14	1.14	1.14	1.14	1.43	1.43
Trading expense ratio (%) ³	0.05	0.05	0.06	0.07	0.11	0.13
Portfolio turnover rate (%) ⁴	9.49	21.80	9.59	13.74	15.46	34.20
Net asset value per security (\$)	14.36	13.00	12.22	11.07	11.54	11.76

	Sep. 30 2025	Mar. 31 2025	Mar. 31 2024	Mar. 31 2023	Mar. 31 2022	Mar. 31 2021
Series DZ						
Total net asset value (\$000) ¹	8,293	8,317	9,002	9,393	11,683	12,395
Securities outstanding (000) ¹	551	606	697	796	938	977
Management expense ratio (%) ²	2.27	2.27	2.27	2.27	2.28	2.28
Management expense ratio before waivers or absorptions (%) ²	2.29	2.29	2.28	2.28	2.29	2.29
Trading expense ratio (%) ³	0.05	0.05	0.06	0.07	0.11	0.13
Portfolio turnover rate (%) ⁴	9.49	21.80	9.59	13.74	15.46	34.20
Net asset value per security (\$)	15.06	13.72	12.91	11.80	12.45	12.69
Series F						
Total net asset value (\$000) ¹	154,482	144,749	151,331	153,338	185,613	105,757
Securities outstanding (000) ¹	7,108	7,361	8,186	9,175	10,668	5,971
Management expense ratio (%) ²	0.95	0.95	0.95	0.95	0.96	0.96
Management expense ratio before waivers or absorptions (%) ²	0.97	0.97	0.96	0.96	0.96	0.96
Trading expense ratio (%) ³	0.05	0.05	0.06	0.07	0.11	0.13
Portfolio turnover rate (%) ⁴	9.49	21.80	9.59	13.74	15.46	34.20
Net asset value per security (\$)	21.74	19.67	18.49	16.71	17.40	17.71
Series F5						
Total net asset value (\$000) ¹	1,879	1,349	1,495	2,919	2,820	1,333
Securities outstanding (000) ¹	156	121	136	279	245	111
Management expense ratio (%) ²	0.97	0.94	0.94	0.93	0.95	0.97
Management expense ratio before waivers or absorptions (%) ²	0.98	0.96	0.95	0.94	0.95	0.97
Trading expense ratio (%) ³	0.05	0.05	0.06	0.07	0.11	0.13
Portfolio turnover rate (%) ⁴	9.49	21.80	9.59	13.74	15.46	34.20
Net asset value per security (\$)	12.06	11.19	11.03	10.46	11.52	12.06

- This information is provided as at the end of the fiscal period shown.
- Management expense ratio ("MER") is based on total expenses, excluding commissions and other portfolio transaction costs, income taxes and withholding taxes, for the stated period and is expressed as an annualized percentage of daily average net assets during the period, except as noted. In the period a series is established, the MER is annualized from the date of inception to the end of the period. Where the Fund directly invests in securities of another fund (including exchange-traded funds or "ETFs"), the MERs presented for the Fund include the portion of MERs of the other fund(s) attributable to this investment. Any income distributions received from ETFs managed by the Manager, with the intention of offsetting fees paid within those ETFs but which are not considered to be duplicative fees under regulatory requirements, are treated as waived expenses for MER purposes. The Manager may waive or absorb operating expenses at its discretion and stop waiving or absorbing such expenses at any time without notice.
- The trading expense ratio ("TER") represents total commissions and other portfolio transaction costs incurred as an annualized percentage of daily average net assets during the period. Where the Fund invests in securities of another fund (including ETFs), the TERs presented for the Fund include the portion of TERs of the other fund(s) attributable to this investment.
- The Fund's portfolio turnover rate indicates how actively the Fund's portfolio advisor manages its portfolio investments. A portfolio turnover rate of 100% is equivalent to the Fund buying and selling all of the securities in its portfolio once in the course of the period. The higher the Fund's portfolio turnover rate in a period, the greater the trading costs payable by the Fund in the period, and the greater the chance of an investor receiving taxable capital gains in the year. There is not necessarily a relationship between a high turnover rate and the performance of a fund. The portfolio turnover rate is not provided when the Fund is less than one year old. The value of any trades to realign the Fund's portfolio after a fund merger, if any, is excluded from the portfolio turnover rate.

SYMMETRY MODERATE GROWTH PORTFOLIO

INTERIM MANAGEMENT REPORT OF FUND PERFORMANCE | For the Period Ended September 30, 2025

RATIOS AND SUPPLEMENTAL DATA (cont'd)

	Sep. 30 2025	Mar. 31 2025	Mar. 31 2024	Mar. 31 2023	Mar. 31 2022	Mar. 31 2021
Series F8						
Total net asset value (\$000) ¹	3,526	2,980	3,129	3,765	6,154	167
Securities outstanding (000) ¹	390	350	362	446	637	16
Management expense ratio (%) ²	0.93	0.93	0.94	0.94	0.94	0.95
Management expense ratio before waivers or absorptions (%) ²	0.95	0.95	0.95	0.94	0.95	0.96
Trading expense ratio (%) ³	0.05	0.05	0.06	0.07	0.11	0.13
Portfolio turnover rate (%) ⁴	9.49	21.80	9.59	13.74	15.46	34.20
Net asset value per security (\$)	9.04	8.51	8.64	8.45	9.65	10.41
Series FB						
Total net asset value (\$000) ¹	3,556	3,675	4,247	5,107	5,698	6,208
Securities outstanding (000) ¹	266	303	373	495	530	566
Management expense ratio (%) ²	1.14	1.14	1.15	1.15	1.16	1.16
Management expense ratio before waivers or absorptions (%) ²	1.16	1.16	1.16	1.15	1.17	1.17
Trading expense ratio (%) ³	0.05	0.05	0.06	0.07	0.11	0.13
Portfolio turnover rate (%) ⁴	9.49	21.80	9.59	13.74	15.46	34.20
Net asset value per security (\$)	13.38	12.12	11.39	10.31	10.76	10.98
Series FB5						
Total net asset value (\$000) ¹	4	3	3	3	3	1
Securities outstanding (000) ¹	-	-	-	-	-	-
Management expense ratio (%) ²	1.19	1.19	1.19	1.19	1.20	1.16
Management expense ratio before waivers or absorptions (%) ²	1.21	1.21	1.20	1.20	1.21	1.16
Trading expense ratio (%) ³	0.05	0.05	0.06	0.07	0.11	0.13
Portfolio turnover rate (%) ⁴	9.49	21.80	9.59	13.74	15.46	34.20
Net asset value per security (\$)	13.26	12.31	12.14	11.52	12.71	13.33
Series FR						
Total net asset value (\$000) ¹	62,530	50,732	40,510	3,460	n/a	n/a
Securities outstanding (000) ¹	4,420	3,958	3,362	317	n/a	n/a
Management expense ratio (%) ²	1.19	1.19	1.19	1.18	n/a	n/a
Management expense ratio before waivers or absorptions (%) ²	1.21	1.21	1.20	1.19	n/a	n/a
Trading expense ratio (%) ³	0.05	0.05	0.06	0.07	n/a	n/a
Portfolio turnover rate (%) ⁴	9.49	21.80	9.59	13.74	n/a	n/a
Net asset value per security (\$)	14.15	12.82	12.05	10.91	n/a	n/a
Series G						
Total net asset value (\$000) ¹	2,667	4,462	4,477	4,905	5,183	5,079
Securities outstanding (000) ¹	141	259	277	333	336	323
Management expense ratio (%) ²	1.66	1.66	1.66	1.66	1.66	1.67
Management expense ratio before waivers or absorptions (%) ²	1.68	1.68	1.67	1.67	1.67	1.67
Trading expense ratio (%) ³	0.05	0.05	0.06	0.07	0.11	0.13
Portfolio turnover rate (%) ⁴	9.49	21.80	9.59	13.74	15.46	34.20
Net asset value per security (\$)	18.95	17.20	16.18	14.71	15.42	15.72

	Sep. 30 2025	Mar. 31 2025	Mar. 31 2024	Mar. 31 2023	Mar. 31 2022	Mar. 31 2021
Series J						
Total net asset value (\$000) ¹	-	-	-	-	-	-
Securities outstanding (000) ¹	-	-	-	-	-	-
Management expense ratio (%) ²	2.05	2.05	2.06	2.05	2.06	2.06
Management expense ratio before waivers or absorptions (%) ²	2.07	2.07	2.07	2.06	2.07	2.07
Trading expense ratio (%) ³	0.05	0.05	0.06	0.07	0.11	0.13
Portfolio turnover rate (%) ⁴	9.49	21.80	9.59	13.74	15.46	34.20
Net asset value per security (\$)	16.61	15.10	14.19	12.96	13.58	13.84
Series O						
Total net asset value (\$000) ¹	38,608	35,192	34,063	33,184	40,101	10,864
Securities outstanding (000) ¹	2,218	2,245	2,313	2,512	2,943	785
Management expense ratio (%) ²	-	0.01	0.01	0.01	0.01	0.02
Management expense ratio before waivers or absorptions (%) ²	0.02	0.02	0.02	0.01	0.02	0.02
Trading expense ratio (%) ³	0.05	0.05	0.06	0.07	0.11	0.13
Portfolio turnover rate (%) ⁴	9.49	21.80	9.59	13.74	15.46	34.20
Net asset value per security (\$)	17.41	15.67	14.73	13.21	13.63	13.84
Series O5						
Total net asset value (\$000) ¹	1,774	1,655	1,612	1,539	5,927	1
Securities outstanding (000) ¹	121	123	121	123	435	-
Management expense ratio (%) ²	-	0.01	0.01	0.01	0.01	0.02
Management expense ratio before waivers or absorptions (%) ²	0.02	0.02	0.02	0.01	0.02	0.02
Trading expense ratio (%) ³	0.05	0.05	0.06	0.07	0.11	0.13
Portfolio turnover rate (%) ⁴	9.49	21.80	9.59	13.74	15.46	34.20
Net asset value per security (\$)	14.63	13.50	13.30	12.49	13.63	14.10
Series PW						
Total net asset value (\$000) ¹	599,467	569,833	594,824	640,174	723,980	577,767
Securities outstanding (000) ¹	41,319	43,170	47,899	56,504	60,704	47,534
Management expense ratio (%) ²	2.06	2.06	2.06	2.06	2.06	2.06
Management expense ratio before waivers or absorptions (%) ²	2.08	2.07	2.07	2.06	2.07	2.07
Trading expense ratio (%) ³	0.05	0.05	0.06	0.07	0.11	0.13
Portfolio turnover rate (%) ⁴	9.49	21.80	9.59	13.74	15.46	34.20
Net asset value per security (\$)	14.51	13.20	12.42	11.33	11.93	12.15
Series PWFB						
Total net asset value (\$000) ¹	32,502	31,536	31,379	42,524	51,328	26,238
Securities outstanding (000) ¹	2,503	2,685	2,841	4,259	4,938	2,480
Management expense ratio (%) ²	0.93	0.94	0.95	0.95	0.95	0.95
Management expense ratio before waivers or absorptions (%) ²	0.95	0.96	0.96	0.96	0.96	0.96
Trading expense ratio (%) ³	0.05	0.05	0.06	0.07	0.11	0.13
Portfolio turnover rate (%) ⁴	9.49	21.80	9.59	13.74	15.46	34.20
Net asset value per security (\$)	12.98	11.75	11.04	9.98	10.39	10.58

SYMMETRY MODERATE GROWTH PORTFOLIO

INTERIM MANAGEMENT REPORT OF FUND PERFORMANCE | For the Period Ended September 30, 2025

RATIOS AND SUPPLEMENTAL DATA (cont'd)

	Sep. 30 2025	Mar. 31 2025	Mar. 31 2024	Mar. 31 2023	Mar. 31 2022	Mar. 31 2021
Series PWF5						
Total net asset value (\$000) ¹	371	352	390	370	785	1
Securities outstanding (000) ¹	27	27	30	31	59	-
Management expense ratio (%) ²	0.97	0.97	0.94	0.92	0.93	0.98
Management expense ratio before waivers or absorptions (%) ²	0.99	0.99	0.95	0.93	0.94	0.98
Trading expense ratio (%) ³	0.05	0.05	0.06	0.07	0.11	0.13
Portfolio turnover rate (%) ⁴	9.49	21.80	9.59	13.74	15.46	34.20
Net asset value per security (\$)	13.98	12.97	12.79	12.12	13.36	13.96
Series PWR						
Total net asset value (\$000) ¹	68,662	56,207	41,346	31,310	26,228	15,334
Securities outstanding (000) ¹	5,539	4,984	3,897	3,235	2,575	1,477
Management expense ratio (%) ²	2.04	2.04	2.05	2.04	2.05	2.05
Management expense ratio before waivers or absorptions (%) ²	2.06	2.06	2.05	2.05	2.06	2.06
Trading expense ratio (%) ³	0.05	0.05	0.06	0.07	0.11	0.13
Portfolio turnover rate (%) ⁴	9.49	21.80	9.59	13.74	15.46	34.20
Net asset value per security (\$)	12.40	11.28	10.61	9.68	10.19	10.38
Series PWT5						
Total net asset value (\$000) ¹	10,650	9,704	9,205	9,279	10,030	3,749
Securities outstanding (000) ¹	848	828	796	837	812	287
Management expense ratio (%) ²	2.05	2.04	2.03	2.02	2.02	2.01
Management expense ratio before waivers or absorptions (%) ²	2.07	2.06	2.04	2.03	2.03	2.01
Trading expense ratio (%) ³	0.05	0.05	0.06	0.07	0.11	0.13
Portfolio turnover rate (%) ⁴	9.49	21.80	9.59	13.74	15.46	34.20
Net asset value per security (\$)	12.56	11.72	11.56	11.08	12.35	13.05
Series PWT8						
Total net asset value (\$000) ¹	3,901	3,620	3,085	3,301	4,405	311
Securities outstanding (000) ¹	399	391	328	355	409	26
Management expense ratio (%) ²	2.05	2.04	2.04	2.03	2.03	1.99
Management expense ratio before waivers or absorptions (%) ²	2.06	2.06	2.05	2.03	2.04	2.00
Trading expense ratio (%) ³	0.05	0.05	0.06	0.07	0.11	0.13
Portfolio turnover rate (%) ⁴	9.49	21.80	9.59	13.74	15.46	34.20
Net asset value per security (\$)	9.77	9.26	9.42	9.31	10.76	11.72
Series PWX						
Total net asset value (\$000) ¹	47,120	44,784	43,639	44,427	48,121	41,491
Securities outstanding (000) ¹	3,093	3,264	3,386	3,842	4,035	3,418
Management expense ratio (%) ²	-	0.01	0.01	0.01	0.01	0.02
Management expense ratio before waivers or absorptions (%) ²	0.02	0.02	0.02	0.01	0.02	0.02
Trading expense ratio (%) ³	0.05	0.05	0.06	0.07	0.11	0.13
Portfolio turnover rate (%) ⁴	9.49	21.80	9.59	13.74	15.46	34.20
Net asset value per security (\$)	15.24	13.72	12.89	11.56	11.93	12.14

	Sep. 30 2025	Mar. 31 2025	Mar. 31 2024	Mar. 31 2023	Mar. 31 2022	Mar. 31 2021
Series PWX8						
Total net asset value (\$000) ¹	2	2	1	1	1	1
Securities outstanding (000) ¹	-	-	-	-	-	-
Management expense ratio (%) ²	-	0.01	0.01	0.01	0.01	0.02
Management expense ratio before waivers or absorptions (%) ²	0.02	0.02	0.02	0.01	0.02	0.02
Trading expense ratio (%) ³	0.05	0.05	0.06	0.07	0.11	0.13
Portfolio turnover rate (%) ⁴	9.49	21.80	9.59	13.74	15.46	34.20
Net asset value per security (\$)	12.95	12.14	12.31	11.92	13.49	14.46
Series S						
Total net asset value (\$000) ¹	25,165	24,476	23,395	19,962	19,635	17,374
Securities outstanding (000) ¹	1,514	1,635	1,663	1,578	1,482	1,290
Management expense ratio (%) ²	0.03	0.03	0.04	0.03	0.04	0.04
Management expense ratio before waivers or absorptions (%) ²	0.05	0.05	0.05	0.04	0.05	0.05
Trading expense ratio (%) ³	0.05	0.05	0.06	0.07	0.11	0.13
Portfolio turnover rate (%) ⁴	9.49	21.80	9.59	13.74	15.46	34.20
Net asset value per security (\$)	16.62	14.97	14.06	12.65	13.25	13.46
Series T5						
Total net asset value (\$000) ¹	1,807	2,059	3,468	3,915	3,592	1,919
Securities outstanding (000) ¹	158	193	329	387	318	160
Management expense ratio (%) ²	2.30	2.31	2.30	2.29	2.29	2.27
Management expense ratio before waivers or absorptions (%) ²	2.32	2.32	2.31	2.30	2.30	2.28
Trading expense ratio (%) ³	0.05	0.05	0.06	0.07	0.11	0.13
Portfolio turnover rate (%) ⁴	9.49	21.80	9.59	13.74	15.46	34.20
Net asset value per security (\$)	11.42	10.66	10.53	10.12	11.31	11.98
Series T8						
Total net asset value (\$000) ¹	863	928	1,691	1,808	2,581	1,548
Securities outstanding (000) ¹	104	118	212	228	281	154
Management expense ratio (%) ²	2.28	2.28	2.27	2.28	2.28	2.25
Management expense ratio before waivers or absorptions (%) ²	2.30	2.30	2.28	2.29	2.29	2.26
Trading expense ratio (%) ³	0.05	0.05	0.06	0.07	0.11	0.13
Portfolio turnover rate (%) ⁴	9.49	21.80	9.59	13.74	15.46	34.20
Net asset value per security (\$)	8.28	7.85	7.99	7.92	9.17	10.02
Series LB						
Total net asset value (\$000) ¹	66,556	71,458	81,860	88,912	101,326	106,643
Securities outstanding (000) ¹	4,242	4,999	6,085	7,222	7,795	8,048
Management expense ratio (%) ²	2.36	2.36	2.36	2.36	2.37	2.37
Management expense ratio before waivers or absorptions (%) ²	2.38	2.38	2.37	2.37	2.38	2.38
Trading expense ratio (%) ³	0.05	0.05	0.06	0.07	0.11	0.13
Portfolio turnover rate (%) ⁴	9.49	21.80	9.59	13.74	15.46	34.20
Net asset value per security (\$)	15.69	14.30	13.45	12.31	13.00	13.25

SYMMETRY MODERATE GROWTH PORTFOLIO

INTERIM MANAGEMENT REPORT OF FUND PERFORMANCE | For the Period Ended September 30, 2025

RATIOS AND SUPPLEMENTAL DATA (cont'd)

	Sep. 30 2025	Mar. 31 2025	Mar. 31 2024	Mar. 31 2023	Mar. 31 2022	Mar. 31 2021
Series LF						
Total net asset value (\$000) ¹	30,170	29,019	27,653	33,469	40,689	20,900
Securities outstanding (000) ¹	2,259	2,401	2,434	3,257	3,802	1,919
Management expense ratio (%) ²	0.98	0.98	0.99	0.98	0.99	0.99
Management expense ratio before waivers or absorptions (%) ²	1.00	1.00	1.00	0.99	1.00	1.00
Trading expense ratio (%) ³	0.05	0.05	0.06	0.07	0.11	0.13
Portfolio turnover rate (%) ⁴	9.49	21.80	9.59	13.74	15.46	34.20
Net asset value per security (\$)	13.36	12.09	11.36	10.28	10.70	10.89

	Sep. 30 2025	Mar. 31 2025	Mar. 31 2024	Mar. 31 2023	Mar. 31 2022	Mar. 31 2021
Series LF5						
Total net asset value (\$000) ¹	2,291	2,666	2,931	3,695	4,434	1,164
Securities outstanding (000) ¹	149	187	209	278	302	76
Management expense ratio (%) ²	0.98	0.98	0.99	0.98	0.99	0.99
Management expense ratio before waivers or absorptions (%) ²	1.00	1.00	1.00	0.99	1.00	1.00
Trading expense ratio (%) ³	0.05	0.05	0.06	0.07	0.11	0.13
Portfolio turnover rate (%) ⁴	9.49	21.80	9.59	13.74	15.46	34.20
Net asset value per security (\$)	15.34	14.23	14.03	13.31	14.67	15.31

	Sep. 30 2025	Mar. 31 2025	Mar. 31 2024	Mar. 31 2023	Mar. 31 2022	Mar. 31 2021
Series LM						
Total net asset value (\$000) ¹	5,277	5,654	6,891	8,229	9,969	12,105
Securities outstanding (000) ¹	645	740	914	1,135	1,229	1,408
Management expense ratio (%) ²	2.36	2.36	2.36	2.36	2.37	2.37
Management expense ratio before waivers or absorptions (%) ²	2.38	2.38	2.37	2.37	2.38	2.38
Trading expense ratio (%) ³	0.05	0.05	0.06	0.07	0.11	0.13
Portfolio turnover rate (%) ⁴	9.49	21.80	9.59	13.74	15.46	34.20
Net asset value per security (\$)	8.18	7.64	7.54	7.25	8.11	8.60

	Sep. 30 2025	Mar. 31 2025	Mar. 31 2024	Mar. 31 2023	Mar. 31 2022	Mar. 31 2021
Series LW						
Total net asset value (\$000) ¹	126,855	112,406	114,473	138,199	162,828	140,777
Securities outstanding (000) ¹	10,496	10,219	11,061	14,625	16,357	13,875
Management expense ratio (%) ²	2.13	2.13	2.13	2.13	2.14	2.14
Management expense ratio before waivers or absorptions (%) ²	2.15	2.15	2.14	2.14	2.15	2.15
Trading expense ratio (%) ³	0.05	0.05	0.06	0.07	0.11	0.13
Portfolio turnover rate (%) ⁴	9.49	21.80	9.59	13.74	15.46	34.20
Net asset value per security (\$)	12.09	11.00	10.35	9.45	9.95	10.15

	Sep. 30 2025	Mar. 31 2025	Mar. 31 2024	Mar. 31 2023	Mar. 31 2022	Mar. 31 2021
Series LW5						
Total net asset value (\$000) ¹	23,113	21,268	23,448	26,979	32,296	27,524
Securities outstanding (000) ¹	1,840	1,815	2,027	2,431	2,608	2,101
Management expense ratio (%) ²	2.13	2.13	2.13	2.13	2.14	2.14
Management expense ratio before waivers or absorptions (%) ²	2.15	2.15	2.14	2.14	2.15	2.15
Trading expense ratio (%) ³	0.05	0.05	0.06	0.07	0.11	0.13
Portfolio turnover rate (%) ⁴	9.49	21.80	9.59	13.74	15.46	34.20
Net asset value per security (\$)	12.56	11.72	11.57	11.10	12.38	13.10

	Sep. 30 2025	Mar. 31 2025	Mar. 31 2024	Mar. 31 2023	Mar. 31 2022	Mar. 31 2021
Series LX						
Total net asset value (\$000) ¹	1,597	1,802	1,929	2,063	2,570	2,632
Securities outstanding (000) ¹	137	166	180	200	223	215
Management expense ratio (%) ²	2.36	2.36	2.36	2.36	2.37	2.37
Management expense ratio before waivers or absorptions (%) ²	2.38	2.38	2.37	2.37	2.38	2.38
Trading expense ratio (%) ³	0.05	0.05	0.06	0.07	0.11	0.13
Portfolio turnover rate (%) ⁴	9.49	21.80	9.59	13.74	15.46	34.20
Net asset value per security (\$)	11.63	10.86	10.72	10.31	11.54	12.23

Management Fees

The management fee for each applicable series is calculated and accrued daily as a percentage of its NAV. The Fund's management fees were used by the Manager to pay for the costs of managing the investment portfolio of the Fund and/or the underlying fund(s), as applicable, including providing investment analysis and recommendations, making investment decisions, making brokerage arrangements for the purchase and sale of the investment portfolio, and providing other services. The Manager also used the management fees to fund trailing commissions and any other compensation (collectively "distribution-related payments") to registered dealers and brokers whose clients invest in the Fund.

LBC Financial Services Inc. ("LBC") is the principal distributor for the LBC series securities of the Fund (as listed under *Fund Formation and Series Information*) and receives a portion of the management fees that the Fund pays to the Manager. Under this arrangement, LBC was entitled to approximately 26% of the total management fees that the Manager received from the LBC series of all Mackenzie funds during the period. The Manager is responsible for paying all distribution-related payments to LBC-authorized dealers whose clients invest in the LBC series of the Fund.

IG Wealth Management Inc., a dealer affiliated with the Manager, may be entitled to distribution-related payments from the Manager on the same basis as unrelated registered brokers and dealers.

The Manager used approximately 41% of the total management fee revenues received from all Mackenzie funds during the period to fund distribution-related payments to registered dealers and brokers. In comparison, such distribution-related payments for the Fund represented on average 40% of the management fees paid by all applicable series of the Fund during the period. The actual percentage for each series may be higher or lower than the average depending on the level of trailing commissions paid for that series.

SYMMETRY MODERATE GROWTH PORTFOLIO

INTERIM MANAGEMENT REPORT OF FUND PERFORMANCE | For the Period Ended September 30, 2025

Fund Formation and Series Information

The Fund may have undergone a number of changes, such as a reorganization or a change in manager, mandate or name. A history of the major changes affecting the Fund in the last 10 years can be found in the Fund's Simplified Prospectus.

Date of Formation: November 19, 2008

The Fund may issue an unlimited number of securities of each series. The number of issued and outstanding securities of each series is disclosed under *Financial Highlights*.

Series Offered by Mackenzie Financial Corporation (180 Queen Street West, Toronto, Ontario, M5V 3K1; 1-800-387-0614; www.mackenzieinvestments.com)

Series A, Series T5 and Series T8 securities are offered to retail investors investing a minimum of \$500 (\$5,000 for Series T5 and Series T8). Investors in Series T5 and Series T8 securities also want to receive a monthly cash flow of 5% or 8% per year, respectively.

Series AR securities are offered to retail investors in a Registered Disability Savings Plan offered by Mackenzie.

Series D securities are offered to retail investors investing a minimum of \$500 through a discount brokerage or other account approved by Mackenzie.

Series F, Series F5 and Series F8 securities are offered to investors who are enrolled in a dealer-sponsored fee-for-service or wrap program, who are subject to an asset-based fee rather than commissions on each transaction and who invest at least \$500 (\$5,000 for Series F5 and Series F8); they are also available to employees of Mackenzie and its subsidiaries, and directors of Mackenzie. Investors in Series F5 and Series F8 securities also want to receive a monthly cash flow of 5% or 8% per year, respectively.

Series FB and Series FB5 securities are offered to retail investors investing a minimum of \$500. Investors are required to negotiate their advisor service fee, which cannot exceed 1.50%, with their financial advisor. Investors in Series FB5 securities also want to receive a monthly cash flow of 5% per year.

Series FR securities are offered to retail investors in a Registered Disability Savings Plan offered by Mackenzie through the Ontario Government Office of the Public Guardian and Trustee (OPGT), or similar programs.

Series O and Series O5 securities are offered only to investors investing a minimum of \$500,000 who are enrolled in Mackenzie Portfolio Architecture Service or Open Architecture Service; retail investors investing a minimum of \$5 million, certain institutional investors; investors in a qualified group plan, and certain qualifying employees of Mackenzie and its subsidiaries. Investors in Series O5 securities also want to receive a monthly cash flow of 5% per year.

Series PW, Series PWT5 and Series PWT8 securities are offered through our Private Wealth Solutions to certain high net worth investors who invest a minimum of \$100,000. Investors in Series PWT5 and Series PWT8 securities also want to receive a monthly cash flow of 5% or 8% per year, respectively.

Series PWFB and Series PWFB5 securities are offered through our Private Wealth Solutions to certain high net worth investors who invest a minimum of \$100,000. Investors are required to negotiate their advisor service fee, which cannot exceed 1.50%, with their financial advisor. Investors in Series PWFB5 securities also want to receive a monthly cash flow of 5% per year.

Series PWR securities are offered through our Private Wealth Solutions to certain high net worth investors who invest a minimum of \$100,000 in a Registered Disability Savings Plan offered by Mackenzie.

Series PWX and Series PWX8 securities are offered through our Private Wealth Solutions to certain high net worth investors who invest a minimum of \$100,000. Investors are required to negotiate their advisor service fee, which cannot exceed 1.50%, with their financial advisor. Investors in Series PWX8 securities also want to receive a monthly cash flow of 8% per year.

Series S securities are offered to The Canada Life Assurance Company and certain other mutual funds, but may be sold to other investors as determined by Mackenzie.

Series B, Series C and Series DZ securities were created specifically for the purpose of implementing mergers affecting the Fund and are not available for sale.

Series G securities are no longer available for sale, except for additional purchases by investors who have held these securities since December 11, 2017.

Series J securities are no longer available for sale.

Series Distributed by LBC Financial Services Inc. (1360 René-Lévesque Blvd. West, 13th Floor, Montréal, Québec H3G 0A9; 1-800-522-1846; www.laurentianbank.ca/mackenzie)

Series LB and Series LX securities are offered to retail investors investing a minimum of \$500 (\$5,000 for Series LX). Investors in Series LX securities also want to receive a monthly cash flow of 5% per year.

Series LF and Series LF5 securities are offered to retail investors investing a minimum of \$500 (\$5,000 for Series LF5), who are enrolled in the LBC Private Banking sponsored fee-for-service program. Investors in Series LF5 securities also want to receive a monthly cash flow of 5% per year.

Series LW and Series LW5 securities are offered through our Preferred Pricing Program to certain high net worth investors who invest a minimum of \$100,000. Investors in Series LW5 securities also want to receive a monthly cash flow of 5% per year.

Series LM securities are no longer available for sale, except that pre-authorized contribution plans that were in place as at November 25, 2015, may continue.

Effective June 1, 2022, an investor may purchase the Fund under a sales charge purchase option and a no-load purchase option. Not all purchase options are available under each series of the Fund. The sales charge under the sales charge purchase option is negotiated by the investor with their dealer. Securities purchased before June 1, 2022, under the redemption charge purchase option may continue to be held in investor accounts. Investors may switch from securities of a Mackenzie fund previously purchased under the redemption charge purchase option to securities of other Mackenzie funds, under the redemption charge purchase option, until such time as the redemption schedule has expired. For further details, please refer to the Fund's Simplified Prospectus and Fund Facts.

SYMMETRY MODERATE GROWTH PORTFOLIO

INTERIM MANAGEMENT REPORT OF FUND PERFORMANCE | For the Period Ended September 30, 2025

Fund Formation and Series Information (cont'd)

Series	Inception/ Reinstatement Date	Management Fee	Administration Fee
Series A	November 24, 2008	1.85%	0.20%
Series AR	December 2, 2011	1.85%	0.20%
Series B	May 6, 2011	1.85%	0.20%
Series C	May 6, 2011	1.98%	0.27%
Series D	February 3, 2014	0.85%	0.16%
Series DZ	May 13, 2011	1.79%	0.27%
Series F	January 5, 2009	0.70%	0.15%
Series F5	May 13, 2014	0.70%	0.15%
Series F8	February 3, 2014	0.70%	0.15%
Series FB	October 26, 2015	0.85%	0.20%
Series FB5	October 26, 2015	0.85%	0.20%
Series FR	October 3, 2022	0.85%	0.20%
Series G	July 29, 2009	1.35%	0.20%
Series J	March 18, 2010	1.75%	0.20%
Series O	August 29, 2012	— ⁽¹⁾	n/a
Series O5	October 16, 2017	— ⁽¹⁾	n/a
Series PW	October 15, 2013	1.70%	0.15%
Series PWFB	April 3, 2017	0.70%	0.15%
Series PWFB5	April 3, 2017	0.70%	0.15%
Series PWR	April 1, 2019	1.70%	0.15%
Series PWT5	April 3, 2017	1.70%	0.15%
Series PWT8	April 3, 2017	1.70%	0.15%
Series PWX	December 9, 2013	— ⁽²⁾	— ⁽²⁾
Series PWX8	October 24, 2018	— ⁽²⁾	— ⁽²⁾
Series S	July 15, 2011	— ⁽¹⁾	0.025%
Series T5	May 31, 2013	1.85%	0.20%
Series T8	August 6, 2013	1.85%	0.20%
Series LB	February 1, 2012	1.85%	0.20%
Series LF	December 7, 2018	0.70%	0.15%
Series LF5	December 7, 2018	0.70%	0.15%
Series LM	January 31, 2012	1.85%	0.20%
Series LW	December 1, 2017	1.70%	0.15%
Series LW5	December 1, 2017	1.70%	0.15%
Series LX	June 14, 2013	1.85%	0.20%

(1) This fee is negotiable and payable directly to Mackenzie by investors in this series.

(2) This fee is payable directly to Mackenzie by investors in this series through redemptions of their securities.