

SYMMETRY FIXED INCOME PORTFOLIO

Interim Management Report of Fund Performance

For the Six-Month Period Ended September 30, 2025

This Interim Management Report of Fund Performance contains financial highlights but does not contain either the interim financial report or annual financial statements of the investment fund. You may obtain a copy of the interim financial report or annual financial statements, at no cost, by contacting us using one of the methods noted under Fund Formation and Series Information or by visiting the SEDAR+ website at www.sedarplus.ca.

Securityholders may also contact us using one of these methods to request a copy of the investment fund's proxy voting policies and procedures, proxy voting disclosure record or quarterly portfolio disclosure. For more information, please refer to the Fund's Simplified Prospectus and Fund Facts, which may also be obtained, at no cost, using any of the methods outlined above.

For the Fund's current net asset values per security and for more recent information on general market events, please visit our website.

A NOTE ON FORWARD-LOOKING STATEMENTS

This report may contain forward-looking statements that reflect our current expectations or forecasts of future events. Forward-looking statements include statements that are predictive in nature, depend upon or refer to future events or conditions, or include words such as "expects", "anticipates", "intends", "plans", "believes", "estimates", "preliminary", "typical" and other similar expressions. In addition, these statements may relate to future corporate actions, future financial performance of a fund or a security and their future investment strategies and prospects. Forward-looking statements are inherently subject to, among other things, risks, uncertainties and assumptions that could cause actual events, results, performance or prospects to differ materially from those expressed in, or implied by, these forward-looking statements. These risks, uncertainties and assumptions include, without limitation, general economic, political and market factors in North America and internationally, interest and foreign exchange rates, the volatility of global equity and capital markets, business competition, technological change, changes in government regulations, changes in securities laws and regulations, changes in tax laws, unexpected judicial or regulatory proceedings, catastrophic events, outbreaks of disease or pandemics (such as COVID-19), and the ability of Mackenzie to attract or retain key employees. The foregoing list of important risks, uncertainties and assumptions is not exhaustive. Please consider these and other factors carefully and do not place undue reliance on forward-looking statements.

The forward-looking information contained in this report is current only as of the date of this report. There should not be an expectation that such information will in all circumstances be updated, supplemented or revised whether as a result of new information, changing circumstances, future events or otherwise.



MACKENZIE
Investments

SYMMETRY FIXED INCOME PORTFOLIO

INTERIM MANAGEMENT REPORT OF FUND PERFORMANCE | For the Period Ended September 30, 2025

Management Discussion of Fund Performance

November 13, 2025

This Management Discussion of Fund Performance presents the portfolio management team's view on the significant factors and developments that have affected the Fund's performance and outlook in the six-month period ended September 30, 2025 (the "period"). If the Fund was established during the period, "period" represents the period since inception.

In this report, "Mackenzie" and "the Manager" refer to Mackenzie Financial Corporation, the manager of the Fund. In addition, net asset value ("NAV") refers to the value of the Fund as calculated for transaction purposes, on which the discussion of Fund performance is based.

Please read *A Note on Forward-Looking Statements* on the first page of this document.

Results of Operations

Investment Performance

The performance of all series in the current and previous periods is shown in the *Past Performance* section of the report. Performance will vary by series primarily because fees and expenses differ between series, or because securities of a series were not issued and outstanding for the entire reporting period. Please refer to the *Fund Formation and Series Information* section of this report for the varying management and administration fees payable by each series. The following comparison to market indices is intended to help investors understand the Fund's performance relative to the general performance of the markets. However, the Fund's mandate may be different from that of the indices shown.

During the period, the Fund's Series A and Series LB securities returned 1.9% (after deducting fees and expenses paid by the series). This compares with a return of 1.0% for a blended index composed of a 90% weighting in the Fund's broad-based index, the FTSE Canada Universe Bond Index (returned 0.9%), and a 10% weighting in the ICE BofA Global Broad Market (Hedged) Index (returned 1.9%). All index and series returns are calculated on a total return basis in Canadian dollar terms. Investors cannot invest in an index without incurring fees, expenses and commissions, which are not reflected in the index returns.

Global fixed income markets reflected easing central bank monetary policy amid slowing economic growth and moderating inflation over the period. The U.S. Federal Reserve, European Central Bank, Bank of England and Bank of Canada all reduced their policy rates, while the Bank of Japan held its rate steady. Unemployment rates rose in the United States and Canada.

The Fund outperformed the broad-based index, with holdings in high-yield bonds contributing to performance. Given the Fund's mandate, the return of the blended index is a more meaningful comparison.

The Fund outperformed the blended index. The Fund's asset allocation contributed to performance, as did the selection of underlying funds within each asset class.

Among the underlying funds in the portfolio, the largest contributors to relative performance were Mack Canadian Bond Pool, Mackenzie US Investment Grade Corporate Bond Index ETF (CAD-Hedged) and Mackenzie Canadian Strategic Fixed Income ETF (respectively representing 58.5%, 6.5% and 6.4% of net assets at period-end).

The largest detractors from relative performance were Mackenzie Global Macro Fund, Mackenzie Sovereign Bond Fund and Mackenzie Enhanced Fixed Income Risk Premia Fund (respectively representing 4.0%, 6.9% and 4.1%).

Changes to the portfolio included the elimination of the allocation to Mackenzie North American Corporate Bond Fund.

Net Assets

The Fund's net assets decreased by 4.6% during the period to \$220.3 million. This change was composed primarily of \$4.6 million in net income (including any interest and/or dividend income) from investment performance, after deducting fees and expenses, and a decrease of \$15.3 million due to net securityholder activity (including sales, redemptions and cash distributions).

Fees and Expenses

The annualized management expense ratio ("MER") for each series during the period ended September 30, 2025, was generally similar to the MER for the year ended March 31, 2025. Total expenses paid vary from period to period mainly as a result of changes in average assets in each series. The MERs for all series are presented in the *Financial Highlights* section of this report.

Recent Developments

The portfolio management team believes policy uncertainty and slower global growth are likely to cap inflation. Because tariff-related price increases appear transitory, the team does not expect a lasting impact on fixed income investments. In Canada, the team believes softer economic data has increased the likelihood of additional Bank of Canada policy rate cuts. In the United States, a more accommodative tone from the U.S. Federal Reserve and mounting fiscal and debt concerns led markets to price in further interest rate cuts into 2026, which the team believes could pressure the U.S. dollar.

Effective May 29, 2025, the underlying fund Mackenzie Core Plus Canadian Fixed Income ETF was renamed Mackenzie Canadian Strategic Fixed Income ETF.

Related Party Transactions

Management and Administration Services

For each applicable series, the Fund paid management fees and administration fees to the Manager at the annual rates specified under *Fund Formation and Series Information* in this report and as more fully described in the Simplified Prospectus. In return for the administration fees, the Manager pays all costs and expenses (other than certain specified fund costs) required to operate the Fund that are not included in management fees. See also *Management Fees*.

Other Related Party Transactions

During the period, the Mackenzie Funds' Independent Review Committee issued a positive recommendation for the Fund to proceed with investing in a private fund managed by Northleaf Capital Partners, a company affiliated with the Manager. At September 30, 2025, the Fund held an investment of \$0.3 million (0.1% of the Fund's NAV) in Northleaf Global Private Markets Investors-B LP. This represents US\$0.2 million as part of a total commitment to invest US\$1.8 million.

During the period, the Fund received \$0.1 million in income distributions from investments in exchange-traded funds ("ETFs") managed by Mackenzie to offset fees paid within those ETFs. There is no assurance that these distributions will continue in the future.

Past Performance

The Fund's performance information assumes all distributions made by the Fund in the periods presented are reinvested in additional securities of the relevant series of the Fund. The performance information does not take into account sales, redemption, distribution or other optional charges, or income taxes payable by any investor that would have reduced returns or performance. The past performance of the Fund is not necessarily an indication of how it will perform in the future.

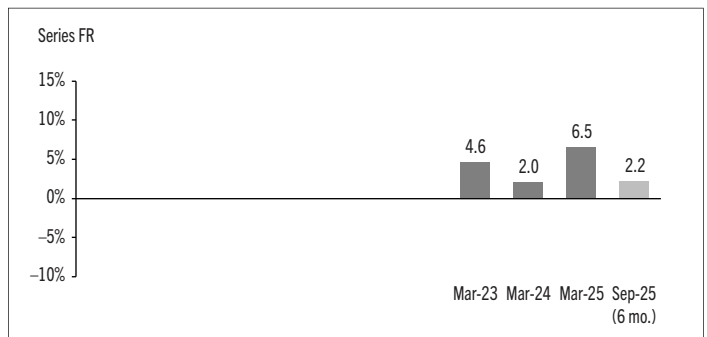
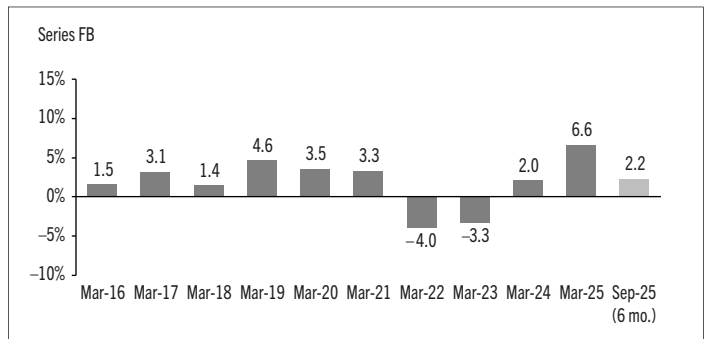
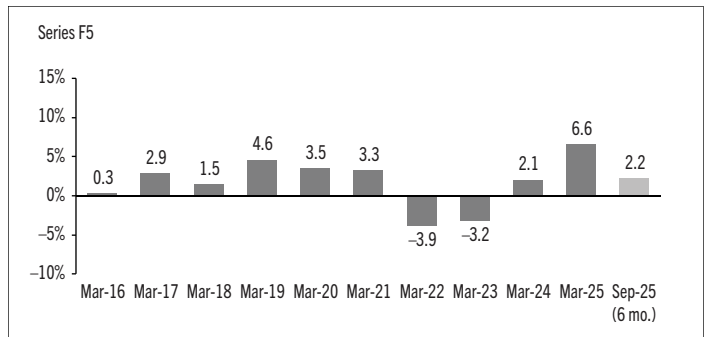
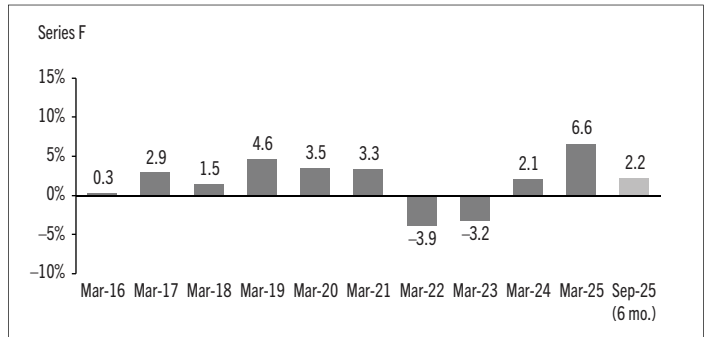
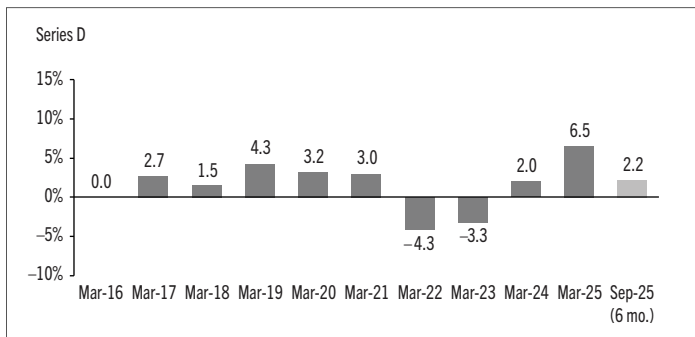
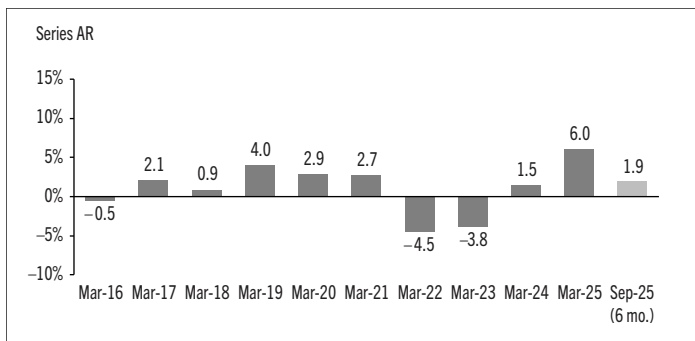
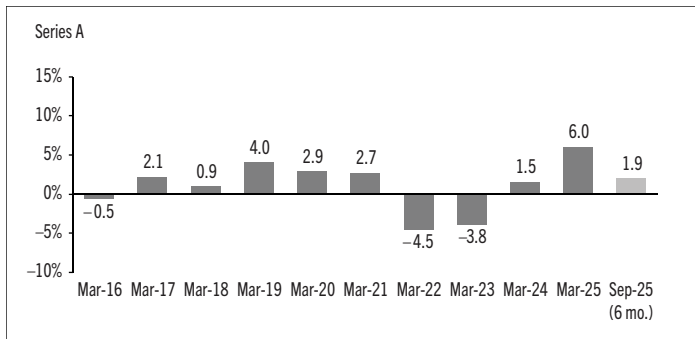
SYMMETRY FIXED INCOME PORTFOLIO

INTERIM MANAGEMENT REPORT OF FUND PERFORMANCE | For the Period Ended September 30, 2025

If you hold this Fund outside of a registered plan, income and capital gains distributions paid to you increase your income for tax purposes whether paid to you in cash or reinvested in additional securities of the Fund. The amount of reinvested taxable distributions is added to the adjusted cost base of the securities that you own. This would decrease your capital gain or increase your capital loss when you later redeem from the Fund, thereby ensuring that you are not taxed on this amount again. Please consult your tax advisor regarding your personal tax situation.

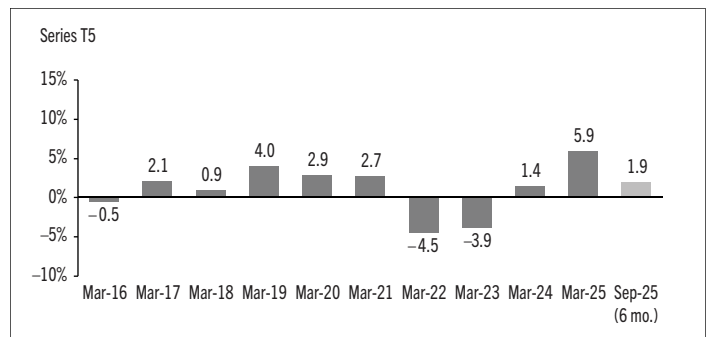
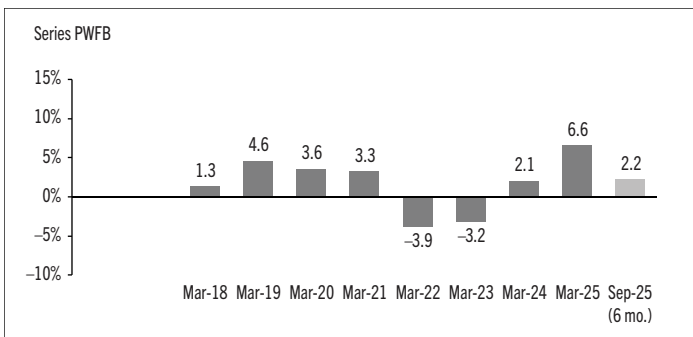
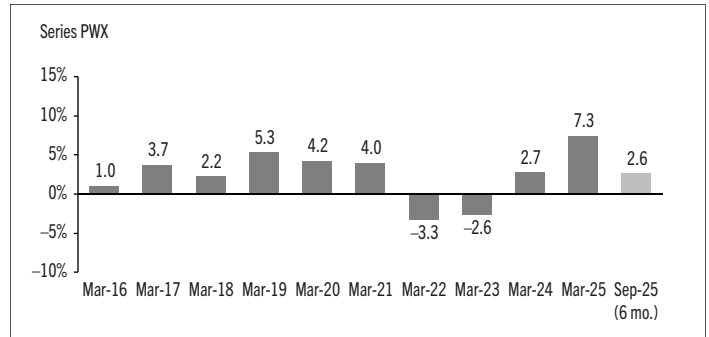
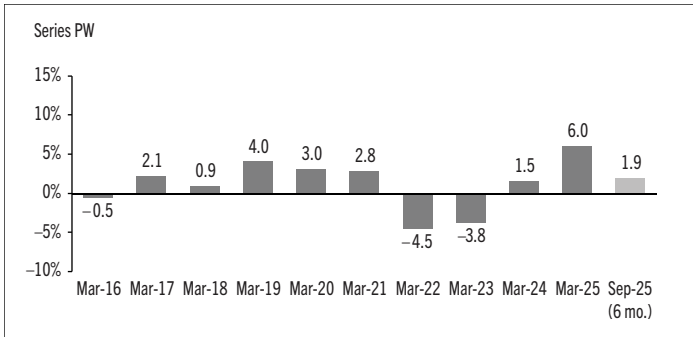
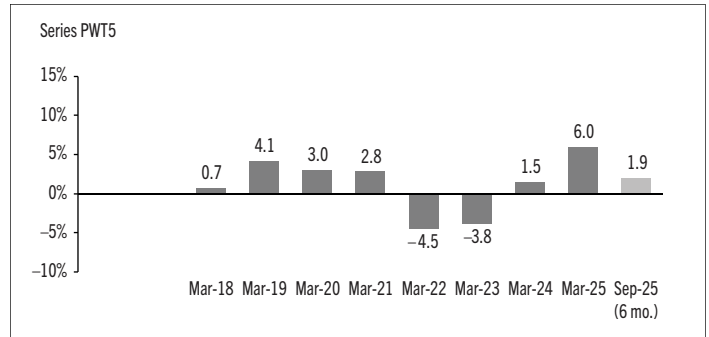
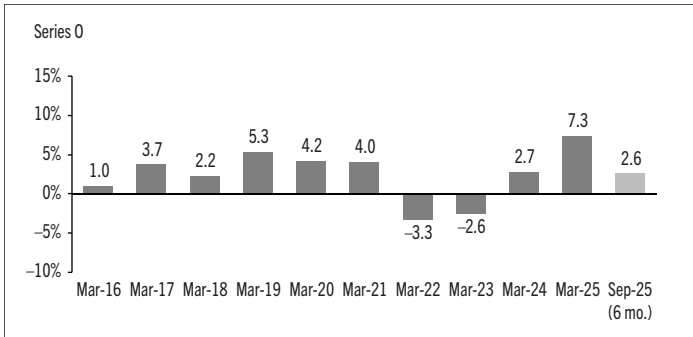
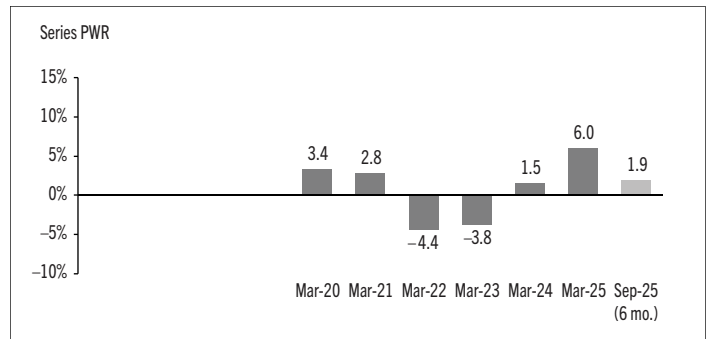
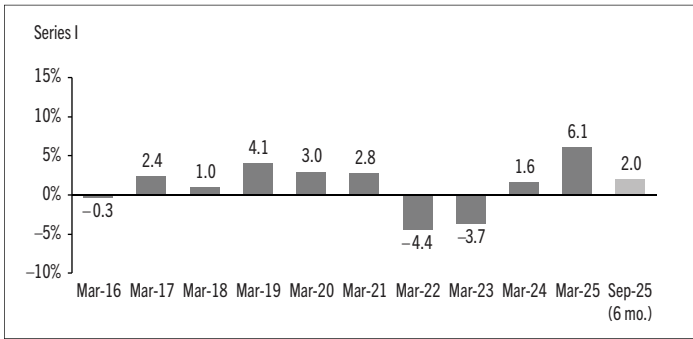
Year-by-Year Returns

The following bar charts present the performance of each series of the Fund for each of the fiscal periods shown. The charts show, in percentage terms, how much an investment made on the first day of each fiscal period, or on the series inception or reinstatement date, as applicable, would have increased or decreased by the last day of the fiscal period presented. Series inception or reinstatement dates can be found under *Fund Formation and Series Information*.



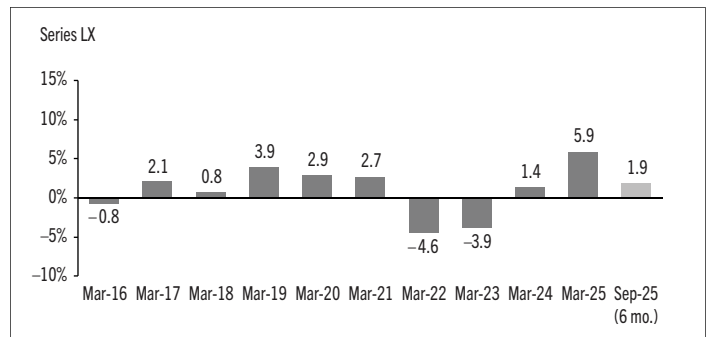
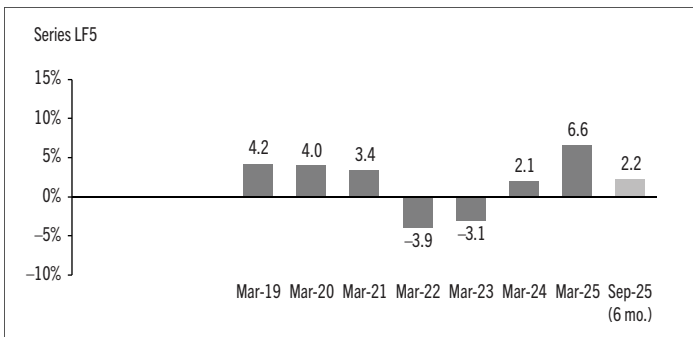
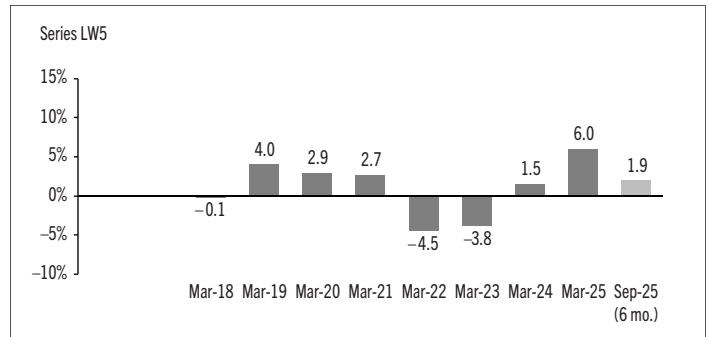
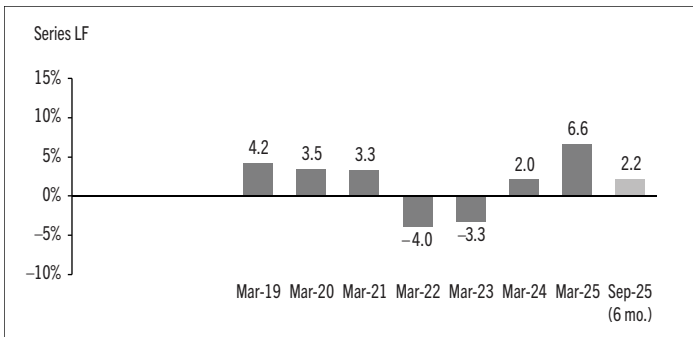
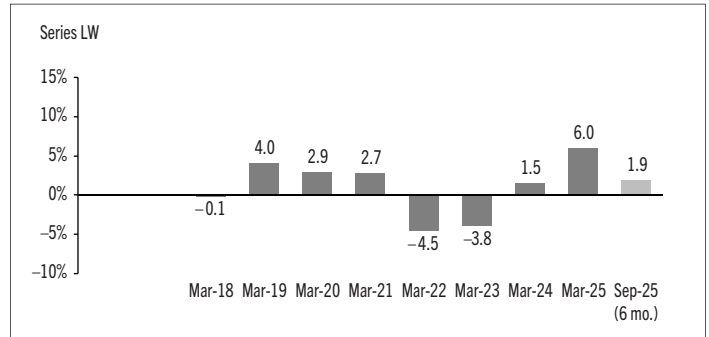
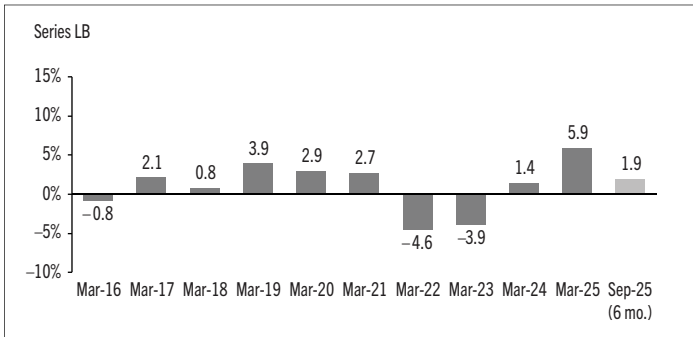
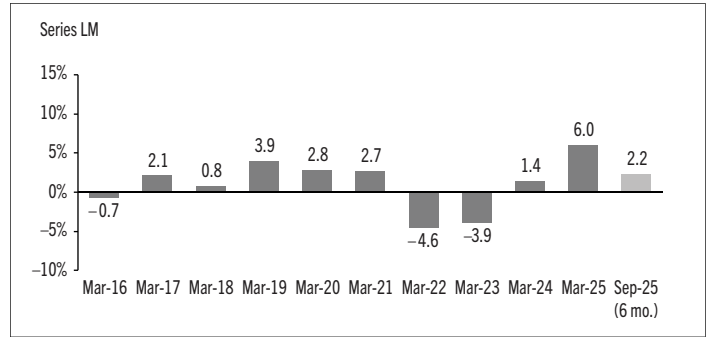
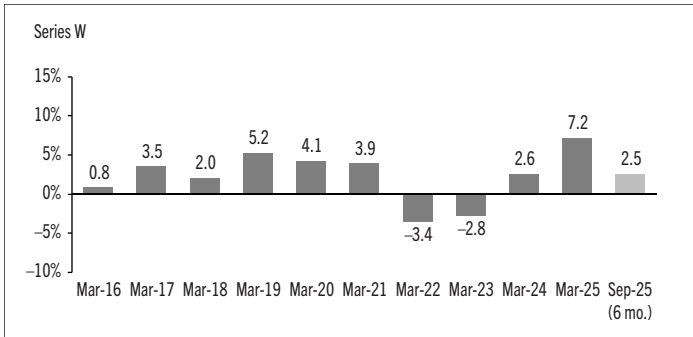
SYMMETRY FIXED INCOME PORTFOLIO

INTERIM MANAGEMENT REPORT OF FUND PERFORMANCE | For the Period Ended September 30, 2025



SYMMETRY FIXED INCOME PORTFOLIO

INTERIM MANAGEMENT REPORT OF FUND PERFORMANCE | For the Period Ended September 30, 2025



SYMMETRY FIXED INCOME PORTFOLIO

INTERIM MANAGEMENT REPORT OF FUND PERFORMANCE | For the Period Ended September 30, 2025

Summary of Investment Portfolio at September 30, 2025

EFFECTIVE PORTFOLIO ALLOCATION	% OF NAV
Bonds	97.5
Bonds	77.8
Long bond futures*	19.7
Short bond futures*	–
Equities	10.4
Long equity futures*	6.4
Equities	4.0
Short equity futures*	–
Cash and cash equivalents	2.1
Commodities	0.5
Long commodities futures*	0.5
Commodities	–
Short commodities futures*	–
Exchange-traded funds/notes	0.2
Other assets (liabilities)	(10.7)

EFFECTIVE REGIONAL ALLOCATION	% OF NAV
Canada	68.4
United States	31.0
Other	2.1
Cash and cash equivalents	2.1
Mexico	1.7
United Kingdom	1.4
Germany	0.8
Poland	0.7
Japan	0.6
Australia	0.6
France	0.4
Spain	0.4
Taiwan	0.2
Singapore	0.2
Netherlands	0.1
Other assets (liabilities)	(10.7)

EFFECTIVE SECTOR ALLOCATION	% OF NAV
Corporate bonds	44.6
Federal bonds	20.5
Foreign government bonds	19.9
Provincial bonds	11.9
Other	6.3
Cash and cash equivalents	2.1
Financials	1.2
Information technology	0.8
Health care	0.7
Real estate	0.6
Commodities	0.5
Industrials	0.4
Consumer discretionary	0.4
Municipal bonds	0.4
Communication services	0.4
Other assets (liabilities)	(10.7)

* Notional values represent 19.7% of NAV for long bond futures, 6.4% of NAV for long equity futures, 0.5% of NAV for long commodities futures, –7.8% of NAV for short bond futures, –4.2% of NAV for short equity futures and –0.3% of NAV for short commodities futures.

The effective allocation shows the portfolio, regional or sector exposure of the Fund calculated by combining its direct and indirect investments.

TOP 25 POSITIONS	% OF NAV
Issuer/Underlying Fund	
Mack Canadian Bond Pool Series R	58.5
Mackenzie Sovereign Bond Fund Series R	6.9
Mackenzie US Investment Grade Corporate Bond Index ETF (CAD-Hedged)	6.5
Mackenzie Canadian Strategic Fixed Income ETF	6.4
Cash and cash equivalents	4.2
Mackenzie Enhanced Fixed Income Risk Premia Fund Series R	4.1
Mackenzie Global Macro Fund Series R	4.0
Mackenzie Canadian All Corporate Bond Index ETF	3.9
Mackenzie Broad Risk Premia Collection Fund Series R	2.3
Mack EAFE Equity Pool Series R	1.3
Mackenzie Enhanced Equity Risk Premia Fund Series R	0.5
Mackenzie Emerging Markets Bond Index ETF (CAD-Hedged)	0.4
Mackenzie Canadian Equity Index ETF	0.3
Mack Comprehensive Equity Pool Series R	0.2
Northleaf Global Private Markets Investors-B LP ⁽¹⁾	0.1
Mackenzie Global Dividend Fund Series R	0.1
Mack Canadian Equity Pool Series R	0.1
Mack Global Bond Pool Series R	0.1
Mack US Equity Pool Series R	–
U.S. Treasury Note 10-Year Futures	–
Top long positions as a percentage of total net asset value	99.9

(1) The issuer of this security is related to the Manager.

The Fund held no direct short positions at the end of the period.

For the prospectus and other information about the underlying fund(s) held in the portfolio, visit www.mackenzieinvestments.com or www.sedarplus.ca.

The investments and percentages may have changed since September 30, 2025, due to the ongoing portfolio transactions of the Fund. Quarterly updates of holdings are available within 60 days of the end of each quarter except for March 31, the Fund's fiscal year-end, when they are available within 90 days.

SYMMETRY FIXED INCOME PORTFOLIO

INTERIM MANAGEMENT REPORT OF FUND PERFORMANCE | For the Period Ended September 30, 2025

Financial Highlights

The following tables show selected key financial information about the Fund and are intended to help you understand the Fund's financial performance for each of the fiscal periods presented below. If during the period a fund or series was established or reinstated, "period" represents the period from inception or reinstatement to the end of that fiscal period. Series inception or reinstatement dates can be found under *Fund Formation and Series Information*.

THE FUND'S NET ASSETS PER SECURITY (\$)¹

Series A	Sep. 30 2025	Mar. 31 2025	Mar. 31 2024	Mar. 31 2023	Mar. 31 2022	Mar. 31 2021
Net assets, beginning of period	9.62	9.40	9.39	9.90	10.67	10.73
Increase (decrease) from operations:						
Total revenue	0.18	0.40	0.33	0.29	0.38	0.42
Total expenses	(0.06)	(0.12)	(0.12)	(0.12)	(0.14)	(0.14)
Realized gains (losses) for the period	(0.09)	(0.34)	(0.19)	(0.40)	0.02	0.28
Unrealized gains (losses) for the period	0.14	0.61	0.09	(0.23)	(0.67)	(0.28)
Total increase (decrease) from operations²	0.17	0.55	0.11	(0.46)	(0.41)	0.28
Distributions:						
From net investment income (excluding Canadian dividends)	(0.10)	(0.33)	(0.13)	(0.13)	(0.12)	(0.23)
From Canadian dividends	(0.01)	(0.01)	–	–	(0.16)	(0.02)
From capital gains	–	–	–	–	(0.03)	(0.11)
Return of capital	–	–	–	–	–	–
Total annual distributions³	(0.11)	(0.34)	(0.13)	(0.13)	(0.31)	(0.36)
Net assets, end of period	9.68	9.62	9.40	9.39	9.90	10.67
Series AR	Sep. 30 2025	Mar. 31 2025	Mar. 31 2024	Mar. 31 2023	Mar. 31 2022	Mar. 31 2021
Net assets, beginning of period	9.64	9.42	9.41	9.92	10.70	10.75
Increase (decrease) from operations:						
Total revenue	0.18	0.40	0.33	0.29	0.38	0.43
Total expenses	(0.06)	(0.12)	(0.12)	(0.12)	(0.14)	(0.14)
Realized gains (losses) for the period	(0.08)	(0.33)	(0.16)	(0.33)	(0.04)	0.28
Unrealized gains (losses) for the period	0.14	0.61	0.09	(0.24)	(0.67)	(0.28)
Total increase (decrease) from operations²	0.18	0.56	0.14	(0.40)	(0.47)	0.29
Distributions:						
From net investment income (excluding Canadian dividends)	(0.10)	(0.33)	(0.13)	(0.13)	(0.12)	(0.23)
From Canadian dividends	(0.01)	(0.01)	–	–	(0.16)	(0.02)
From capital gains	–	–	–	–	(0.03)	(0.11)
Return of capital	–	–	–	–	–	–
Total annual distributions³	(0.11)	(0.34)	(0.13)	(0.13)	(0.31)	(0.36)
Net assets, end of period	9.70	9.64	9.42	9.41	9.92	10.70

Series D	Sep. 30 2025	Mar. 31 2025	Mar. 31 2024	Mar. 31 2023	Mar. 31 2022	Mar. 31 2021
Net assets, beginning of period	9.30	9.11	9.10	9.60	10.35	10.40
Increase (decrease) from operations:						
Total revenue	0.17	0.39	0.32	0.29	0.37	0.41
Total expenses	(0.03)	(0.07)	(0.07)	(0.07)	(0.10)	(0.11)
Realized gains (losses) for the period	(0.07)	(0.34)	(0.15)	(0.21)	(0.04)	0.13
Unrealized gains (losses) for the period	0.13	0.59	0.09	(0.23)	(0.65)	(0.27)
Total increase (decrease) from operations²	0.20	0.57	0.19	(0.22)	(0.42)	0.16
Distributions:						
From net investment income (excluding Canadian dividends)	(0.13)	(0.39)	(0.17)	(0.18)	(0.13)	(0.25)
From Canadian dividends	(0.01)	(0.01)	–	–	(0.17)	(0.03)
From capital gains	–	–	–	–	(0.03)	(0.10)
Return of capital	–	–	–	–	–	–
Total annual distributions³	(0.14)	(0.40)	(0.17)	(0.18)	(0.33)	(0.38)
Net assets, end of period	9.37	9.30	9.11	9.10	9.60	10.35
Series F	Sep. 30 2025	Mar. 31 2025	Mar. 31 2024	Mar. 31 2023	Mar. 31 2022	Mar. 31 2021
Net assets, beginning of period	9.83	9.63	9.62	10.16	10.95	11.00
Increase (decrease) from operations:						
Total revenue	0.18	0.41	0.34	0.30	0.39	0.44
Total expenses	(0.03)	(0.07)	(0.06)	(0.06)	(0.07)	(0.08)
Realized gains (losses) for the period	(0.08)	(0.33)	(0.23)	(0.41)	–	0.23
Unrealized gains (losses) for the period	0.14	0.62	0.10	(0.24)	(0.69)	(0.28)
Total increase (decrease) from operations²	0.21	0.63	0.15	(0.41)	(0.37)	0.31
Distributions:						
From net investment income (excluding Canadian dividends)	(0.14)	(0.42)	(0.19)	(0.20)	(0.15)	(0.28)
From Canadian dividends	(0.01)	(0.01)	–	–	(0.20)	(0.03)
From capital gains	–	–	–	–	(0.04)	(0.13)
Return of capital	–	–	–	–	–	–
Total annual distributions³	(0.15)	(0.43)	(0.19)	(0.20)	(0.39)	(0.44)
Net assets, end of period	9.90	9.83	9.63	9.62	10.16	10.95

(1) These calculations are prescribed by securities regulations and are not intended to be a reconciliation between opening and closing net assets per security. This information is derived from the Fund's unaudited interim financial statements and audited annual financial statements. The net assets per security presented in the financial statements may differ from the net asset value per security calculated for fund pricing purposes. An explanation of these differences, if any, can be found in the *Notes to Financial Statements*.

(2) Net assets and distributions are based on the actual number of securities outstanding at the relevant time. The increase/decrease from operations is based on the weighted average number of securities outstanding over the fiscal period.

(3) Distributions were paid in cash/reinvested in additional securities of the Fund, or both.

SYMMETRY FIXED INCOME PORTFOLIO

INTERIM MANAGEMENT REPORT OF FUND PERFORMANCE | For the Period Ended September 30, 2025

THE FUND'S NET ASSETS PER SECURITY (\$)¹ (cont'd)

	Sep. 30 2025	Mar. 31 2025	Mar. 31 2024	Mar. 31 2023	Mar. 31 2022	Mar. 31 2021
Series F5						
Net assets, beginning of period	7.55	7.72	8.12	9.06	10.30	10.87
Increase (decrease) from operations:						
Total revenue	0.14	0.32	0.28	0.26	0.36	0.42
Total expenses	(0.02)	(0.05)	(0.05)	(0.06)	(0.07)	(0.08)
Realized gains (losses) for the period	(0.01)	(0.24)	(0.24)	(0.63)	(0.07)	0.30
Unrealized gains (losses) for the period	0.11	0.49	0.08	(0.21)	(0.63)	(0.27)
Total increase (decrease) from operations²	0.22	0.52	0.07	(0.64)	(0.41)	0.37
Distributions:						
From net investment income (excluding Canadian dividends)	(0.06)	(0.30)	(0.15)	(0.17)	(0.13)	(0.27)
From Canadian dividends	(0.01)	–	–	–	(0.18)	(0.03)
From capital gains	–	–	–	–	(0.04)	(0.11)
Return of capital	(0.12)	(0.37)	(0.40)	(0.47)	(0.53)	(0.55)
Total annual distributions³	(0.19)	(0.67)	(0.55)	(0.64)	(0.88)	(0.96)
Net assets, end of period	7.52	7.55	7.72	8.12	9.06	10.30
Series FB						
Net assets, beginning of period	8.92	8.74	8.73	9.21	9.93	9.98
Increase (decrease) from operations:						
Total revenue	0.17	0.37	0.31	0.27	0.36	0.40
Total expenses	(0.03)	(0.06)	(0.06)	(0.06)	(0.07)	(0.07)
Realized gains (losses) for the period	(0.09)	(0.31)	(0.25)	(0.40)	0.04	0.33
Unrealized gains (losses) for the period	0.13	0.56	0.09	(0.22)	(0.63)	(0.26)
Total increase (decrease) from operations²	0.18	0.56	0.09	(0.41)	(0.30)	0.40
Distributions:						
From net investment income (excluding Canadian dividends)	(0.12)	(0.37)	(0.17)	(0.18)	(0.13)	(0.25)
From Canadian dividends	(0.01)	(0.01)	–	–	(0.18)	(0.03)
From capital gains	–	–	–	–	(0.04)	(0.11)
Return of capital	–	–	–	–	–	–
Total annual distributions³	(0.13)	(0.38)	(0.17)	(0.18)	(0.35)	(0.39)
Net assets, end of period	8.98	8.92	8.74	8.73	9.21	9.93
Series FR						
Net assets, beginning of period	10.43	10.22	10.21	10.00	n/a	n/a
Increase (decrease) from operations:						
Total revenue	0.21	0.44	0.36	0.16	n/a	n/a
Total expenses	(0.04)	(0.08)	(0.07)	(0.02)	n/a	n/a
Realized gains (losses) for the period	(1.97)	(0.36)	0.04	0.44	n/a	n/a
Unrealized gains (losses) for the period	0.16	0.66	0.10	(0.13)	n/a	n/a
Total increase (decrease) from operations²	(1.64)	0.66	0.43	0.45	n/a	n/a
Distributions:						
From net investment income (excluding Canadian dividends)	(0.14)	(0.43)	(0.20)	(0.25)	n/a	n/a
From Canadian dividends	(0.01)	(0.01)	–	–	n/a	n/a
From capital gains	–	–	–	–	n/a	n/a
Return of capital	–	–	–	–	n/a	n/a
Total annual distributions³	(0.15)	(0.44)	(0.20)	(0.25)	n/a	n/a
Net assets, end of period	10.51	10.43	10.22	10.21	n/a	n/a

	Sep. 30 2025	Mar. 31 2025	Mar. 31 2024	Mar. 31 2023	Mar. 31 2022	Mar. 31 2021
Series I						
Net assets, beginning of period	9.57	9.36	9.35	9.86	10.63	10.68
Increase (decrease) from operations:						
Total revenue	0.18	0.40	0.33	0.29	0.38	0.42
Total expenses	(0.05)	(0.11)	(0.11)	(0.11)	(0.12)	(0.13)
Realized gains (losses) for the period	(0.08)	(0.32)	(0.16)	(0.32)	0.04	0.32
Unrealized gains (losses) for the period	0.14	0.60	0.09	(0.23)	(0.67)	(0.27)
Total increase (decrease) from operations²	0.19	0.57	0.15	(0.37)	(0.37)	0.34
Distributions:						
From net investment income (excluding Canadian dividends)	(0.11)	(0.34)	(0.14)	(0.14)	(0.12)	(0.24)
From Canadian dividends	(0.01)	(0.01)	–	–	(0.17)	(0.02)
From capital gains	–	–	–	–	(0.03)	(0.11)
Return of capital	–	–	–	–	–	–
Total annual distributions³	(0.12)	(0.35)	(0.14)	(0.14)	(0.32)	(0.37)
Net assets, end of period	9.64	9.57	9.36	9.35	9.86	10.63
Series O						
Net assets, beginning of period	10.10	9.92	9.91	10.47	11.29	11.34
Increase (decrease) from operations:						
Total revenue	0.19	0.43	0.35	0.31	0.41	0.45
Total expenses	–	–	–	–	–	–
Realized gains (losses) for the period	(0.09)	(0.35)	(0.17)	(0.35)	(0.05)	0.43
Unrealized gains (losses) for the period	0.15	0.64	0.10	(0.25)	(0.71)	(0.29)
Total increase (decrease) from operations²	0.25	0.72	0.28	(0.29)	(0.35)	0.59
Distributions:						
From net investment income (excluding Canadian dividends)	(0.16)	(0.52)	(0.26)	(0.28)	(0.19)	(0.34)
From Canadian dividends	(0.02)	(0.01)	–	–	(0.25)	(0.03)
From capital gains	–	–	–	–	(0.04)	(0.15)
Return of capital	–	–	–	–	–	–
Total annual distributions³	(0.18)	(0.53)	(0.26)	(0.28)	(0.48)	(0.52)
Net assets, end of period	10.17	10.10	9.92	9.91	10.47	11.29
Series PW						
Net assets, beginning of period	9.54	9.33	9.32	9.83	10.59	10.65
Increase (decrease) from operations:						
Total revenue	0.18	0.40	0.33	0.29	0.38	0.42
Total expenses	(0.06)	(0.12)	(0.11)	(0.11)	(0.13)	(0.14)
Realized gains (losses) for the period	(0.08)	(0.33)	(0.18)	(0.36)	(0.03)	0.21
Unrealized gains (losses) for the period	0.14	0.60	0.09	(0.23)	(0.67)	(0.27)
Total increase (decrease) from operations²	0.18	0.55	0.13	(0.41)	(0.45)	0.22
Distributions:						
From net investment income (excluding Canadian dividends)	(0.11)	(0.33)	(0.13)	(0.14)	(0.12)	(0.24)
From Canadian dividends	(0.01)	(0.01)	–	–	(0.16)	(0.02)
From capital gains	–	–	–	–	(0.03)	(0.11)
Return of capital	–	–	–	–	–	–
Total annual distributions³	(0.12)	(0.34)	(0.13)	(0.14)	(0.31)	(0.37)
Net assets, end of period	9.61	9.54	9.33	9.32	9.83	10.59

SYMMETRY FIXED INCOME PORTFOLIO

INTERIM MANAGEMENT REPORT OF FUND PERFORMANCE | For the Period Ended September 30, 2025

THE FUND'S NET ASSETS PER SECURITY (\$)¹ (cont'd)

	Sep. 30 2025	Mar. 31 2025	Mar. 31 2024	Mar. 31 2023	Mar. 31 2022	Mar. 31 2021
Series PWFB						
Net assets, beginning of period	8.95	8.77	8.76	9.24	9.96	10.01
Increase (decrease) from operations:						
Total revenue	0.17	0.38	0.31	0.27	0.36	0.39
Total expenses	(0.03)	(0.06)	(0.06)	(0.06)	(0.07)	(0.07)
Realized gains (losses) for the period	(0.08)	(0.31)	(0.16)	(0.25)	(0.10)	(0.02)
Unrealized gains (losses) for the period	0.13	0.57	0.09	(0.22)	(0.63)	(0.25)
Total increase (decrease) from operations²	0.19	0.58	0.18	(0.26)	(0.44)	0.05
Distributions:						
From net investment income (excluding Canadian dividends)	(0.12)	(0.38)	(0.17)	(0.18)	(0.14)	(0.26)
From Canadian dividends	(0.01)	(0.01)	–	–	(0.18)	(0.03)
From capital gains	–	–	–	–	(0.03)	(0.11)
Return of capital	–	–	–	–	–	–
Total annual distributions³	(0.13)	(0.39)	(0.17)	(0.18)	(0.35)	(0.40)
Net assets, end of period	9.01	8.95	8.77	8.76	9.24	9.96
Series PWR						
Net assets, beginning of period	8.95	8.75	8.74	9.22	9.94	9.99
Increase (decrease) from operations:						
Total revenue	0.17	0.37	0.31	0.27	0.36	0.40
Total expenses	(0.05)	(0.11)	(0.10)	(0.11)	(0.12)	(0.12)
Realized gains (losses) for the period	(0.06)	(0.29)	(0.17)	(0.21)	(0.07)	0.24
Unrealized gains (losses) for the period	0.13	0.56	0.09	(0.22)	(0.63)	(0.26)
Total increase (decrease) from operations²	0.19	0.53	0.13	(0.27)	(0.46)	0.26
Distributions:						
From net investment income (excluding Canadian dividends)	(0.10)	(0.31)	(0.12)	(0.13)	(0.11)	(0.22)
From Canadian dividends	(0.01)	(0.01)	–	–	(0.15)	(0.02)
From capital gains	–	–	–	–	(0.03)	(0.11)
Return of capital	–	–	–	–	–	–
Total annual distributions³	(0.11)	(0.32)	(0.12)	(0.13)	(0.29)	(0.35)
Net assets, end of period	9.01	8.95	8.75	8.74	9.22	9.94
Series PWT5						
Net assets, beginning of period	8.80	9.00	9.47	10.56	12.01	12.68
Increase (decrease) from operations:						
Total revenue	0.16	0.38	0.32	0.30	0.42	0.49
Total expenses	(0.05)	(0.11)	(0.11)	(0.12)	(0.15)	(0.16)
Realized gains (losses) for the period	(0.08)	(0.32)	(0.15)	(0.36)	0.02	0.20
Unrealized gains (losses) for the period	0.13	0.57	0.09	(0.24)	(0.74)	(0.32)
Total increase (decrease) from operations²	0.16	0.52	0.15	(0.42)	(0.45)	0.21
Distributions:						
From net investment income (excluding Canadian dividends)	(0.07)	(0.30)	(0.12)	(0.14)	(0.13)	(0.27)
From Canadian dividends	(0.01)	(0.01)	–	–	(0.17)	(0.03)
From capital gains	–	–	–	–	(0.04)	(0.12)
Return of capital	(0.14)	(0.41)	(0.47)	(0.54)	(0.62)	(0.64)
Total annual distributions³	(0.22)	(0.72)	(0.59)	(0.68)	(0.96)	(1.06)
Net assets, end of period	8.75	8.80	9.00	9.47	10.56	12.01

	Sep. 30 2025	Mar. 31 2025	Mar. 31 2024	Mar. 31 2023	Mar. 31 2022	Mar. 31 2021
Series PWX						
Net assets, beginning of period	9.32	9.15	9.14	9.66	10.41	10.45
Increase (decrease) from operations:						
Total revenue	0.17	0.39	0.32	0.29	0.37	0.41
Total expenses	–	–	–	–	–	–
Realized gains (losses) for the period	(0.16)	(0.32)	(0.12)	(0.29)	(0.09)	0.12
Unrealized gains (losses) for the period	0.13	0.59	0.09	(0.23)	(0.66)	(0.27)
Total increase (decrease) from operations²	0.14	0.66	0.29	(0.23)	(0.38)	0.26
Distributions:						
From net investment income (excluding Canadian dividends)	(0.15)	(0.48)	(0.24)	(0.26)	(0.17)	(0.31)
From Canadian dividends	(0.02)	(0.01)	–	–	(0.23)	(0.03)
From capital gains	–	–	–	–	(0.04)	(0.14)
Return of capital	–	–	–	–	–	–
Total annual distributions³	(0.17)	(0.49)	(0.24)	(0.26)	(0.44)	(0.48)
Net assets, end of period	9.38	9.32	9.15	9.14	9.66	10.41
Series T5						
Net assets, beginning of period	7.35	7.52	7.91	8.82	10.03	10.60
Increase (decrease) from operations:						
Total revenue	0.14	0.31	0.27	0.25	0.35	0.41
Total expenses	(0.05)	(0.10)	(0.10)	(0.10)	(0.13)	(0.14)
Realized gains (losses) for the period	(0.06)	(0.22)	(0.17)	(0.29)	0.03	0.42
Unrealized gains (losses) for the period	0.11	0.47	0.08	(0.20)	(0.62)	(0.27)
Total increase (decrease) from operations²	0.14	0.46	0.08	(0.34)	(0.37)	0.42
Distributions:						
From net investment income (excluding Canadian dividends)	(0.06)	(0.24)	(0.10)	(0.11)	(0.11)	(0.22)
From Canadian dividends	(0.01)	–	–	–	(0.14)	(0.02)
From capital gains	–	–	–	–	(0.02)	(0.11)
Return of capital	(0.11)	(0.36)	(0.39)	(0.45)	(0.52)	(0.53)
Total annual distributions³	(0.18)	(0.60)	(0.49)	(0.56)	(0.79)	(0.88)
Net assets, end of period	7.31	7.35	7.52	7.91	8.82	10.03
Series W						
Net assets, beginning of period	9.85	9.66	9.65	10.19	11.00	11.04
Increase (decrease) from operations:						
Total revenue	0.19	0.41	0.34	0.30	0.39	0.44
Total expenses	(0.01)	(0.02)	(0.02)	(0.02)	(0.02)	(0.02)
Realized gains (losses) for the period	(0.08)	(0.24)	(0.31)	(0.35)	0.12	0.66
Unrealized gains (losses) for the period	0.14	0.62	0.10	(0.24)	(0.69)	(0.29)
Total increase (decrease) from operations²	0.24	0.77	0.11	(0.31)	(0.20)	0.79
Distributions:						
From net investment income (excluding Canadian dividends)	(0.15)	(0.49)	(0.24)	(0.25)	(0.17)	(0.32)
From Canadian dividends	(0.02)	(0.01)	–	–	(0.23)	(0.03)
From capital gains	–	–	–	–	(0.05)	(0.14)
Return of capital	–	–	–	–	–	–
Total annual distributions³	(0.17)	(0.50)	(0.24)	(0.25)	(0.45)	(0.49)
Net assets, end of period	9.92	9.85	9.66	9.65	10.19	11.00

SYMMETRY FIXED INCOME PORTFOLIO

INTERIM MANAGEMENT REPORT OF FUND PERFORMANCE | For the Period Ended September 30, 2025

THE FUND'S NET ASSETS PER SECURITY (\$)¹ (cont'd)

	Sep. 30 2025	Mar. 31 2025	Mar. 31 2024	Mar. 31 2023	Mar. 31 2022	Mar. 31 2021
Series LB						
Net assets, beginning of period	9.52	9.30	9.29	9.80	10.56	10.62
Increase (decrease) from operations:						
Total revenue	0.18	0.40	0.33	0.29	0.38	0.41
Total expenses	(0.06)	(0.13)	(0.12)	(0.12)	(0.14)	(0.15)
Realized gains (losses) for the period	(0.11)	(0.32)	(0.21)	(0.40)	0.01	(0.18)
Unrealized gains (losses) for the period	0.14	0.60	0.09	(0.23)	(0.66)	(0.27)
Total increase (decrease) from operations²	0.15	0.55	0.09	(0.46)	(0.41)	(0.19)
Distributions:						
From net investment income (excluding Canadian dividends)	(0.10)	(0.32)	(0.12)	(0.12)	(0.12)	(0.23)
From Canadian dividends	(0.01)	(0.01)	–	–	(0.15)	(0.02)
From capital gains	–	–	–	–	(0.03)	(0.10)
Return of capital	–	–	–	–	–	–
Total annual distributions³	(0.11)	(0.33)	(0.12)	(0.12)	(0.30)	(0.35)
Net assets, end of period	9.59	9.52	9.30	9.29	9.80	10.56
Series LF						
Net assets, beginning of period	9.01	8.82	8.81	9.30	10.03	10.08
Increase (decrease) from operations:						
Total revenue	0.17	0.38	0.31	0.28	0.36	0.40
Total expenses	(0.03)	(0.06)	(0.06)	(0.06)	(0.07)	(0.07)
Realized gains (losses) for the period	(0.08)	(0.30)	(0.14)	(0.22)	(0.30)	0.08
Unrealized gains (losses) for the period	0.13	0.57	0.09	(0.22)	(0.63)	(0.26)
Total increase (decrease) from operations²	0.19	0.59	0.20	(0.22)	(0.64)	0.15
Distributions:						
From net investment income (excluding Canadian dividends)	(0.12)	(0.38)	(0.17)	(0.18)	(0.14)	(0.26)
From Canadian dividends	(0.01)	(0.01)	–	–	(0.18)	(0.03)
From capital gains	–	–	–	–	(0.03)	(0.11)
Return of capital	–	–	–	–	–	–
Total annual distributions³	(0.13)	(0.39)	(0.17)	(0.18)	(0.35)	(0.40)
Net assets, end of period	9.07	9.01	8.82	8.81	9.30	10.03
Series LF5						
Net assets, beginning of period	9.93	10.16	10.68	11.90	13.53	14.26
Increase (decrease) from operations:						
Total revenue	0.19	0.42	0.37	0.34	0.47	0.54
Total expenses	(0.03)	(0.07)	(0.07)	(0.07)	(0.09)	(0.10)
Realized gains (losses) for the period	(0.09)	(0.29)	(0.28)	0.89	(0.07)	(0.56)
Unrealized gains (losses) for the period	0.14	0.64	0.10	(0.28)	(0.83)	(0.35)
Total increase (decrease) from operations²	0.21	0.70	0.12	0.88	(0.52)	(0.47)
Distributions:						
From net investment income (excluding Canadian dividends)	(0.07)	(0.39)	(0.20)	(0.22)	(0.18)	(0.35)
From Canadian dividends	(0.01)	(0.01)	–	–	(0.24)	(0.04)
From capital gains	–	–	–	–	(0.03)	(0.15)
Return of capital	(0.17)	(0.47)	(0.52)	(0.61)	(0.70)	(0.72)
Total annual distributions³	(0.25)	(0.87)	(0.72)	(0.83)	(1.15)	(1.26)
Net assets, end of period	9.89	9.93	10.16	10.68	11.90	13.53

	Sep. 30 2025	Mar. 31 2025	Mar. 31 2024	Mar. 31 2023	Mar. 31 2022	Mar. 31 2021
Series LM						
Net assets, beginning of period	7.05	7.21	7.58	8.46	9.61	10.16
Increase (decrease) from operations:						
Total revenue	0.13	0.30	0.26	0.24	0.34	0.39
Total expenses	(0.03)	(0.09)	(0.10)	(0.10)	(0.12)	(0.14)
Realized gains (losses) for the period	(0.33)	(0.24)	(0.40)	(0.74)	0.02	0.32
Unrealized gains (losses) for the period	0.10	0.45	0.07	(0.19)	(0.59)	(0.25)
Total increase (decrease) from operations²	(0.13)	0.42	(0.17)	(0.79)	(0.35)	0.32
Distributions:						
From net investment income (excluding Canadian dividends)	(0.05)	(0.23)	(0.09)	(0.10)	(0.10)	(0.21)
From Canadian dividends	(0.01)	–	–	–	(0.14)	(0.02)
From capital gains	–	–	–	–	(0.02)	(0.10)
Return of capital	(0.12)	(0.34)	(0.38)	(0.44)	(0.50)	(0.51)
Total annual distributions³	(0.18)	(0.57)	(0.47)	(0.54)	(0.76)	(0.84)
Net assets, end of period	7.03	7.05	7.21	7.58	8.46	9.61
Series LW						
Net assets, beginning of period	8.92	8.72	8.71	9.19	9.90	9.95
Increase (decrease) from operations:						
Total revenue	0.17	0.37	0.31	0.27	0.35	0.39
Total expenses	(0.06)	(0.11)	(0.11)	(0.11)	(0.13)	(0.13)
Realized gains (losses) for the period	(0.07)	(0.31)	(0.17)	(0.29)	(0.06)	(0.17)
Unrealized gains (losses) for the period	0.13	0.56	0.09	(0.22)	(0.62)	(0.25)
Total increase (decrease) from operations²	0.17	0.51	0.12	(0.35)	(0.46)	(0.16)
Distributions:						
From net investment income (excluding Canadian dividends)	(0.10)	(0.31)	(0.12)	(0.12)	(0.11)	(0.22)
From Canadian dividends	(0.01)	(0.01)	–	–	(0.15)	(0.02)
From capital gains	–	–	–	–	(0.03)	(0.10)
Return of capital	–	–	–	–	–	–
Total annual distributions³	(0.11)	(0.32)	(0.12)	(0.12)	(0.29)	(0.34)
Net assets, end of period	8.98	8.92	8.72	8.71	9.19	9.90
Series LW5						
Net assets, beginning of period	9.07	9.28	9.76	10.89	12.37	13.07
Increase (decrease) from operations:						
Total revenue	0.17	0.39	0.33	0.31	0.43	0.50
Total expenses	(0.06)	(0.12)	(0.12)	(0.13)	(0.15)	(0.17)
Realized gains (losses) for the period	(0.08)	(0.30)	(0.25)	(0.31)	–	0.33
Unrealized gains (losses) for the period	0.13	0.58	0.10	(0.25)	(0.76)	(0.33)
Total increase (decrease) from operations²	0.16	0.55	0.06	(0.38)	(0.48)	0.33
Distributions:						
From net investment income (excluding Canadian dividends)	(0.07)	(0.30)	(0.13)	(0.14)	(0.13)	(0.28)
From Canadian dividends	(0.01)	(0.01)	–	–	(0.18)	(0.03)
From capital gains	–	–	–	–	(0.03)	(0.12)
Return of capital	(0.15)	(0.43)	(0.48)	(0.56)	(0.64)	(0.66)
Total annual distributions³	(0.23)	(0.74)	(0.61)	(0.70)	(0.98)	(1.09)
Net assets, end of period	9.02	9.07	9.28	9.76	10.89	12.37

SYMMETRY FIXED INCOME PORTFOLIO

INTERIM MANAGEMENT REPORT OF FUND PERFORMANCE | For the Period Ended September 30, 2025

THE FUND'S NET ASSETS PER SECURITY (\$)¹ (cont'd)

Series LX	Sep. 30 2025	Mar. 31 2025	Mar. 31 2024	Mar. 31 2023	Mar. 31 2022	Mar. 31 2021
Net assets, beginning of period	7.14	7.30	7.68	8.56	9.73	10.28
Increase (decrease) from operations:						
Total revenue	0.13	0.30	0.26	0.25	0.34	0.40
Total expenses	(0.05)	(0.10)	(0.10)	(0.10)	(0.13)	(0.14)
Realized gains (losses) for the period	(0.06)	(0.22)	(0.26)	(0.28)	(0.03)	0.17
Unrealized gains (losses) for the period	0.10	0.46	0.08	(0.20)	(0.60)	(0.26)
Total increase (decrease) from operations²	0.12	0.44	(0.02)	(0.33)	(0.42)	0.17
Distributions:						
From net investment income (excluding Canadian dividends)	(0.05)	(0.23)	(0.09)	(0.10)	(0.10)	(0.21)
From Canadian dividends	(0.01)	–	–	–	(0.14)	(0.02)
From capital gains	–	–	–	–	(0.03)	(0.10)
Return of capital	(0.12)	(0.35)	(0.38)	(0.45)	(0.50)	(0.52)
Total annual distributions³	(0.18)	(0.58)	(0.47)	(0.55)	(0.77)	(0.85)
Net assets, end of period	7.09	7.14	7.30	7.68	8.56	9.73

RATIOS AND SUPPLEMENTAL DATA

Series A	Sep. 30 2025	Mar. 31 2025	Mar. 31 2024	Mar. 31 2023	Mar. 31 2022	Mar. 31 2021
Total net asset value (\$000)¹	25,941	27,397	29,322	32,079	42,134	56,067
Securities outstanding (000)¹	2,679	2,849	3,119	3,416	4,255	5,253
Management expense ratio (%)²	1.28	1.28	1.28	1.29	1.29	1.29
Management expense ratio before waivers or absorptions (%)²	1.33	1.32	1.30	1.30	1.30	1.30
Trading expense ratio (%)³	0.02	0.02	0.02	0.02	0.04	0.04
Portfolio turnover rate (%)⁴	3.84	29.60	11.21	12.64	20.31	22.71
Net asset value per security (\$)	9.68	9.62	9.40	9.39	9.90	10.67
Series AR	Sep. 30 2025	Mar. 31 2025	Mar. 31 2024	Mar. 31 2023	Mar. 31 2022	Mar. 31 2021
Total net asset value (\$000)¹	4,483	4,553	4,807	5,052	5,470	6,048
Securities outstanding (000)¹	462	473	510	537	551	565
Management expense ratio (%)²	1.26	1.27	1.27	1.28	1.28	1.28
Management expense ratio before waivers or absorptions (%)²	1.31	1.31	1.29	1.29	1.29	1.29
Trading expense ratio (%)³	0.02	0.02	0.02	0.02	0.04	0.04
Portfolio turnover rate (%)⁴	3.84	29.60	11.21	12.64	20.31	22.71
Net asset value per security (\$)	9.70	9.64	9.42	9.41	9.92	10.70
Series D	Sep. 30 2025	Mar. 31 2025	Mar. 31 2024	Mar. 31 2023	Mar. 31 2022	Mar. 31 2021
Total net asset value (\$000)¹	661	673	636	658	397	445
Securities outstanding (000)¹	71	72	70	72	41	43
Management expense ratio (%)²	0.73	0.73	0.74	0.74	1.02	1.01
Management expense ratio before waivers or absorptions (%)²	0.78	0.77	0.75	0.75	1.03	1.02
Trading expense ratio (%)³	0.02	0.02	0.02	0.02	0.04	0.04
Portfolio turnover rate (%)⁴	3.84	29.60	11.21	12.64	20.31	22.71
Net asset value per security (\$)	9.37	9.30	9.11	9.10	9.60	10.35

(1) This information is provided as at the end of the fiscal period shown.

(2) Management expense ratio ("MER") is based on total expenses, excluding commissions and other portfolio transaction costs, income taxes and withholding taxes, for the stated period and is expressed as an annualized percentage of daily average net assets during the period, except as noted. In the period a series is established, the MER is annualized from the date of inception to the end of the period. Where the Fund directly invests in securities of another fund (including exchange-traded funds or "ETFs"), the MERs presented for the Fund include the portion of MERs of the other fund(s) attributable to this investment. Any income distributions received from ETFs managed by the Manager, with the intention of offsetting fees paid within those ETFs but which are not considered to be duplicative fees under regulatory requirements, are treated as waived expenses for MER purposes. The Manager may waive or absorb operating expenses at its discretion and stop waiving or absorbing such expenses at any time without notice.

(3) The trading expense ratio ("TER") represents total commissions and other portfolio transaction costs incurred as an annualized percentage of daily average net assets during the period. Where the Fund invests in securities of another fund (including ETFs), the TERs presented for the Fund include the portion of TERs of the other fund(s) attributable to this investment.

(4) The Fund's portfolio turnover rate indicates how actively the Fund's portfolio advisor manages its portfolio investments. A portfolio turnover rate of 100% is equivalent to the Fund buying and selling all of the securities in its portfolio once in the course of the period. The higher the Fund's portfolio turnover rate in a period, the greater the trading costs payable by the Fund in the period, and the greater the chance of an investor receiving taxable capital gains in the year. There is not necessarily a relationship between a high turnover rate and the performance of a fund. The portfolio turnover rate is not provided when the Fund is less than one year old. The value of any trades to realign the Fund's portfolio after a fund merger, if any, is excluded from the portfolio turnover rate.

SYMMETRY FIXED INCOME PORTFOLIO

INTERIM MANAGEMENT REPORT OF FUND PERFORMANCE | For the Period Ended September 30, 2025

RATIOS AND SUPPLEMENTAL DATA (cont'd)

	Sep. 30 2025	Mar. 31 2025	Mar. 31 2024	Mar. 31 2023	Mar. 31 2022	Mar. 31 2021
Series F						
Total net asset value (\$000) ¹	16,968	17,344	23,294	31,341	36,888	46,515
Securities outstanding (000) ¹	1,714	1,764	2,419	3,257	3,632	4,248
Management expense ratio (%) ²	0.67	0.67	0.67	0.68	0.68	0.68
Management expense ratio before waivers or absorptions (%) ²	0.72	0.71	0.69	0.69	0.68	0.68
Trading expense ratio (%) ³	0.02	0.02	0.02	0.02	0.04	0.04
Portfolio turnover rate (%) ⁴	3.84	29.60	11.21	12.64	20.31	22.71
Net asset value per security (\$)	9.90	9.83	9.63	9.62	10.16	10.95
Series F5						
Total net asset value (\$000) ¹	32	14	31	74	176	359
Securities outstanding (000) ¹	4	2	4	9	19	35
Management expense ratio (%) ²	0.66	0.67	0.67	0.68	0.69	0.69
Management expense ratio before waivers or absorptions (%) ²	0.70	0.71	0.69	0.69	0.69	0.70
Trading expense ratio (%) ³	0.02	0.02	0.02	0.02	0.04	0.04
Portfolio turnover rate (%) ⁴	3.84	29.60	11.21	12.64	20.31	22.71
Net asset value per security (\$)	7.52	7.55	7.72	8.12	9.06	10.30
Series FB						
Total net asset value (\$000) ¹	101	136	226	299	428	608
Securities outstanding (000) ¹	11	15	26	34	47	61
Management expense ratio (%) ²	0.69	0.69	0.69	0.71	0.70	0.70
Management expense ratio before waivers or absorptions (%) ²	0.74	0.73	0.71	0.72	0.71	0.71
Trading expense ratio (%) ³	0.02	0.02	0.02	0.02	0.04	0.04
Portfolio turnover rate (%) ⁴	3.84	29.60	11.21	12.64	20.31	22.71
Net asset value per security (\$)	8.98	8.92	8.74	8.73	9.21	9.93
Series FR						
Total net asset value (\$000) ¹	1	568	285	1	n/a	n/a
Securities outstanding (000) ¹	–	54	28	–	n/a	n/a
Management expense ratio (%) ²	0.74	0.74	0.74	0.78	n/a	n/a
Management expense ratio before waivers or absorptions (%) ²	0.78	0.78	0.76	0.79	n/a	n/a
Trading expense ratio (%) ³	0.02	0.02	0.02	0.02	n/a	n/a
Portfolio turnover rate (%) ⁴	3.84	29.60	11.21	12.64	n/a	n/a
Net asset value per security (\$)	10.51	10.43	10.22	10.21	n/a	n/a
Series I						
Total net asset value (\$000) ¹	149	147	140	138	359	476
Securities outstanding (000) ¹	15	15	15	15	36	45
Management expense ratio (%) ²	1.16	1.16	1.16	1.17	1.17	1.17
Management expense ratio before waivers or absorptions (%) ²	1.21	1.20	1.18	1.18	1.18	1.18
Trading expense ratio (%) ³	0.02	0.02	0.02	0.02	0.04	0.04
Portfolio turnover rate (%) ⁴	3.84	29.60	11.21	12.64	20.31	22.71
Net asset value per security (\$)	9.64	9.57	9.36	9.35	9.86	10.63

	Sep. 30 2025	Mar. 31 2025	Mar. 31 2024	Mar. 31 2023	Mar. 31 2022	Mar. 31 2021
Series O						
Total net asset value (\$000) ¹	49,331	50,594	43,899	43,977	44,921	48,660
Securities outstanding (000) ¹	4,849	5,008	4,426	4,437	4,291	4,309
Management expense ratio (%) ²	–	0.01	0.01	0.01	0.01	0.01
Management expense ratio before waivers or absorptions (%) ²	0.05	0.05	0.02	0.03	0.02	0.02
Trading expense ratio (%) ³	0.02	0.02	0.02	0.02	0.04	0.04
Portfolio turnover rate (%) ⁴	3.84	29.60	11.21	12.64	20.31	22.71
Net asset value per security (\$)	10.17	10.10	9.92	9.91	10.47	11.29
Series PW						
Total net asset value (\$000) ¹	51,768	53,308	57,989	61,791	73,630	81,544
Securities outstanding (000) ¹	5,388	5,588	6,217	6,632	7,493	7,700
Management expense ratio (%) ²	1.22	1.22	1.23	1.23	1.23	1.23
Management expense ratio before waivers or absorptions (%) ²	1.27	1.26	1.24	1.24	1.24	1.24
Trading expense ratio (%) ³	0.02	0.02	0.02	0.02	0.04	0.04
Portfolio turnover rate (%) ⁴	3.84	29.60	11.21	12.64	20.31	22.71
Net asset value per security (\$)	9.61	9.54	9.33	9.32	9.83	10.59
Series PWFB						
Total net asset value (\$000) ¹	8,881	9,009	8,341	8,409	7,828	7,111
Securities outstanding (000) ¹	986	1,007	952	960	847	714
Management expense ratio (%) ²	0.68	0.68	0.67	0.68	0.68	0.68
Management expense ratio before waivers or absorptions (%) ²	0.72	0.72	0.69	0.69	0.68	0.68
Trading expense ratio (%) ³	0.02	0.02	0.02	0.02	0.04	0.04
Portfolio turnover rate (%) ⁴	3.84	29.60	11.21	12.64	20.31	22.71
Net asset value per security (\$)	9.01	8.95	8.77	8.76	9.24	9.96
Series PWR						
Total net asset value (\$000) ¹	2,740	2,508	2,030	1,969	1,796	1,607
Securities outstanding (000) ¹	304	280	232	225	195	162
Management expense ratio (%) ²	1.22	1.22	1.22	1.22	1.22	1.20
Management expense ratio before waivers or absorptions (%) ²	1.27	1.26	1.23	1.23	1.22	1.21
Trading expense ratio (%) ³	0.02	0.02	0.02	0.02	0.04	0.04
Portfolio turnover rate (%) ⁴	3.84	29.60	11.21	12.64	20.31	22.71
Net asset value per security (\$)	9.01	8.95	8.75	8.74	9.22	9.94
Series PWT5						
Total net asset value (\$000) ¹	308	324	346	442	459	693
Securities outstanding (000) ¹	35	37	38	47	43	58
Management expense ratio (%) ²	1.25	1.25	1.24	1.25	1.25	1.25
Management expense ratio before waivers or absorptions (%) ²	1.30	1.29	1.26	1.26	1.26	1.26
Trading expense ratio (%) ³	0.02	0.02	0.02	0.02	0.04	0.04
Portfolio turnover rate (%) ⁴	3.84	29.60	11.21	12.64	20.31	22.71
Net asset value per security (\$)	8.75	8.80	9.00	9.47	10.56	12.01

SYMMETRY FIXED INCOME PORTFOLIO

INTERIM MANAGEMENT REPORT OF FUND PERFORMANCE | For the Period Ended September 30, 2025

RATIOS AND SUPPLEMENTAL DATA (cont'd)

	Sep. 30 2025	Mar. 31 2025	Mar. 31 2024	Mar. 31 2023	Mar. 31 2022	Mar. 31 2021
Series PWX						
Total net asset value (\$000) ¹	1,697	5,150	5,038	4,392	3,989	3,768
Securities outstanding (000) ¹	181	553	551	480	413	362
Management expense ratio (%) ²	–	0.01	0.01	0.01	0.01	0.01
Management expense ratio before waivers or absorptions (%) ²	0.05	0.05	0.02	0.03	0.02	0.02
Trading expense ratio (%) ³	0.02	0.02	0.02	0.02	0.04	0.04
Portfolio turnover rate (%) ⁴	3.84	29.60	11.21	12.64	20.31	22.71
Net asset value per security (\$)	9.38	9.32	9.15	9.14	9.66	10.41
Series T5						
Total net asset value (\$000) ¹	42	42	94	136	154	223
Securities outstanding (000) ¹	6	6	13	17	17	22
Management expense ratio (%) ²	1.27	1.30	1.31	1.32	1.31	1.30
Management expense ratio before waivers or absorptions (%) ²	1.32	1.34	1.32	1.33	1.32	1.31
Trading expense ratio (%) ³	0.02	0.02	0.02	0.02	0.04	0.04
Portfolio turnover rate (%) ⁴	3.84	29.60	11.21	12.64	20.31	22.71
Net asset value per security (\$)	7.31	7.35	7.52	7.91	8.82	10.03
Series W						
Total net asset value (\$000) ¹	38	39	141	212	285	550
Securities outstanding (000) ¹	4	4	15	22	28	50
Management expense ratio (%) ²	0.16	0.17	0.17	0.18	0.17	0.18
Management expense ratio before waivers or absorptions (%) ²	0.21	0.21	0.18	0.19	0.18	0.18
Trading expense ratio (%) ³	0.02	0.02	0.02	0.02	0.04	0.04
Portfolio turnover rate (%) ⁴	3.84	29.60	11.21	12.64	20.31	22.71
Net asset value per security (\$)	9.92	9.85	9.66	9.65	10.19	11.00
Series LB						
Total net asset value (\$000) ¹	5,135	5,731	7,101	7,810	10,143	13,847
Securities outstanding (000) ¹	536	602	763	840	1,035	1,311
Management expense ratio (%) ²	1.33	1.33	1.33	1.34	1.34	1.34
Management expense ratio before waivers or absorptions (%) ²	1.37	1.37	1.34	1.35	1.34	1.34
Trading expense ratio (%) ³	0.02	0.02	0.02	0.02	0.04	0.04
Portfolio turnover rate (%) ⁴	3.84	29.60	11.21	12.64	20.31	22.71
Net asset value per security (\$)	9.59	9.52	9.30	9.29	9.80	10.56
Series LF						
Total net asset value (\$000) ¹	21,053	21,484	22,388	17,752	11,984	6,267
Securities outstanding (000) ¹	2,321	2,385	2,537	2,014	1,288	625
Management expense ratio (%) ²	0.69	0.70	0.70	0.71	0.70	0.70
Management expense ratio before waivers or absorptions (%) ²	0.74	0.74	0.71	0.72	0.71	0.71
Trading expense ratio (%) ³	0.02	0.02	0.02	0.02	0.04	0.04
Portfolio turnover rate (%) ⁴	3.84	29.60	11.21	12.64	20.31	22.71
Net asset value per security (\$)	9.07	9.01	8.82	8.81	9.30	10.03

	Sep. 30 2025	Mar. 31 2025	Mar. 31 2024	Mar. 31 2023	Mar. 31 2022	Mar. 31 2021
Series LF5						
Total net asset value (\$000) ¹	277	281	180	245	95	99
Securities outstanding (000) ¹	28	28	18	23	8	7
Management expense ratio (%) ²	0.69	0.69	0.69	0.70	0.70	0.70
Management expense ratio before waivers or absorptions (%) ²	0.74	0.74	0.70	0.71	0.71	0.71
Trading expense ratio (%) ³	0.02	0.02	0.02	0.02	0.04	0.04
Portfolio turnover rate (%) ⁴	3.84	29.60	11.21	12.64	20.31	22.71
Net asset value per security (\$)	9.89	9.93	10.16	10.68	11.90	13.53
Series LM						
Total net asset value (\$000) ¹	–	1	4	107	354	496
Securities outstanding (000) ¹	–	–	1	14	42	52
Management expense ratio (%) ²	1.33	1.32	1.32	1.33	1.33	1.33
Management expense ratio before waivers or absorptions (%) ²	1.37	1.37	1.34	1.34	1.34	1.34
Trading expense ratio (%) ³	0.02	0.02	0.02	0.02	0.04	0.04
Portfolio turnover rate (%) ⁴	3.84	29.60	11.21	12.64	20.31	22.71
Net asset value per security (\$)	7.03	7.05	7.21	7.58	8.46	9.61
Series LW						
Total net asset value (\$000) ¹	30,282	31,276	35,072	31,521	31,626	32,091
Securities outstanding (000) ¹	3,371	3,506	4,022	3,619	3,443	3,241
Management expense ratio (%) ²	1.27	1.27	1.27	1.28	1.28	1.28
Management expense ratio before waivers or absorptions (%) ²	1.32	1.31	1.29	1.29	1.29	1.29
Trading expense ratio (%) ³	0.02	0.02	0.02	0.02	0.04	0.04
Portfolio turnover rate (%) ⁴	3.84	29.60	11.21	12.64	20.31	22.71
Net asset value per security (\$)	8.98	8.92	8.72	8.71	9.19	9.90
Series LW5						
Total net asset value (\$000) ¹	325	348	546	875	964	1,354
Securities outstanding (000) ¹	36	38	59	90	88	109
Management expense ratio (%) ²	1.26	1.27	1.27	1.28	1.28	1.28
Management expense ratio before waivers or absorptions (%) ²	1.31	1.31	1.28	1.29	1.29	1.29
Trading expense ratio (%) ³	0.02	0.02	0.02	0.02	0.04	0.04
Portfolio turnover rate (%) ⁴	3.84	29.60	11.21	12.64	20.31	22.71
Net asset value per security (\$)	9.02	9.07	9.28	9.76	10.89	12.37
Series LX						
Total net asset value (\$000) ¹	120	87	67	115	125	106
Securities outstanding (000) ¹	17	12	9	15	15	11
Management expense ratio (%) ²	1.33	1.33	1.33	1.34	1.33	1.34
Management expense ratio before waivers or absorptions (%) ²	1.37	1.37	1.34	1.35	1.34	1.35
Trading expense ratio (%) ³	0.02	0.02	0.02	0.02	0.04	0.04
Portfolio turnover rate (%) ⁴	3.84	29.60	11.21	12.64	20.31	22.71
Net asset value per security (\$)	7.09	7.14	7.30	7.68	8.56	9.73

SYMMETRY FIXED INCOME PORTFOLIO

INTERIM MANAGEMENT REPORT OF FUND PERFORMANCE | For the Period Ended September 30, 2025

Management Fees

The management fee for each applicable series is calculated and accrued daily as a percentage of its NAV. The Fund's management fees were used by the Manager to pay for the costs of managing the investment portfolio of the Fund and/or the underlying fund(s), as applicable, including providing investment analysis and recommendations, making investment decisions, making brokerage arrangements for the purchase and sale of the investment portfolio, and providing other services. The Manager also used the management fees to fund trailing commissions and any other compensation (collectively "distribution-related payments") to registered dealers and brokers whose clients invest in the Fund.

LBC Financial Services Inc. ("LBC") is the principal distributor for the LBC series securities of the Fund (as listed under *Fund Formation and Series Information*) and receives a portion of the management fees that the Fund pays to the Manager. Under this arrangement, LBC was entitled to approximately 26% of the total management fees that the Manager received from the LBC series of all Mackenzie funds during the period. The Manager is responsible for paying all distribution-related payments to LBC-authorized dealers whose clients invest in the LBC series of the Fund.

IG Wealth Management Inc., a dealer affiliated with the Manager, may be entitled to distribution-related payments from the Manager on the same basis as unrelated registered brokers and dealers.

The Manager used approximately 41% of the total management fee revenues received from all Mackenzie funds during the period to fund distribution-related payments to registered dealers and brokers. In comparison, such distribution-related payments for the Fund represented on average 36% of the management fees paid by all applicable series of the Fund during the period. The actual percentage for each series may be higher or lower than the average depending on the level of trailing commissions paid for that series.

SYMMETRY FIXED INCOME PORTFOLIO

INTERIM MANAGEMENT REPORT OF FUND PERFORMANCE | For the Period Ended September 30, 2025

Fund Formation and Series Information

The Fund may have undergone a number of changes, such as a reorganization or a change in manager, mandate or name. A history of the major changes affecting the Fund in the last 10 years can be found in the Fund's Simplified Prospectus.

Date of Formation: February 2, 2004

The Fund may issue an unlimited number of securities of each series. The number of issued and outstanding securities of each series is disclosed under *Financial Highlights*.

Series Offered by Mackenzie Financial Corporation (180 Queen Street West, Toronto, Ontario, M5V 3K1; 1-800-387-0614; www.mackenzieinvestments.com)

Series A and Series T5 securities are offered to retail investors investing a minimum of \$500 (\$5,000 for Series T5). Investors in Series T5 securities also want to receive a monthly cash flow of 5% per year.

Series AR securities are offered to retail investors in a Registered Disability Savings Plan offered by Mackenzie.

Series D securities are offered to retail investors investing a minimum of \$500 through a discount brokerage or other account approved by Mackenzie.

Series F and Series F5 securities are offered to investors who are enrolled in a dealer-sponsored fee-for-service or wrap program, who are subject to an asset-based fee rather than commissions on each transaction and who invest at least \$500 (\$5,000 for Series F5); they are also available to employees of Mackenzie and its subsidiaries, and directors of Mackenzie. Investors in Series F5 securities also want to receive a monthly cash flow of 5% per year.

Series FB securities are offered to retail investors investing a minimum of \$500. Investors are required to negotiate their advisor service fee, which cannot exceed 1.50%, with their financial advisor.

Series FR securities are offered to retail investors in a Registered Disability Savings Plan offered by Mackenzie through the Ontario Government Office of the Public Guardian and Trustee (OPGT), or similar programs.

Series O securities are offered only to investors investing a minimum of \$500,000 who are enrolled in Mackenzie Portfolio Architecture Service or Open Architecture Service; retail investors investing a minimum of \$5 million, certain institutional investors; investors in a qualified group plan, and certain qualifying employees of Mackenzie and its subsidiaries.

Series PW and Series PWT5 securities are offered through our Private Wealth Solutions to certain high net worth investors who invest a minimum of \$100,000. Investors in Series PWT5 securities also want to receive a monthly cash flow of 5% per year.

Series PWFB securities are offered through our Private Wealth Solutions to certain high net worth investors who invest a minimum of \$100,000. Investors are required to negotiate their advisor service fee, which cannot exceed 1.50%, with their financial advisor.

Series PWR securities are offered through our Private Wealth Solutions to certain high net worth investors who invest a minimum of \$100,000 in a Registered Disability Savings Plan offered by Mackenzie.

Series PWX securities are offered through our Private Wealth Solutions to certain high net worth investors who invest a minimum of \$100,000. Investors are required to negotiate their advisor service fee, which cannot exceed 1.50%, with their financial advisor.

Series I and Series W securities are no longer available for sale.

Series Distributed by LBC Financial Services Inc. (1360 René-Lévesque Blvd. West, 13th Floor, Montréal, Québec H3G 0A9; 1-800-522-1846; www.laurentianbank.ca/mackenzie)

Series LB and Series LX securities are offered to retail investors investing a minimum of \$500 (\$5,000 for Series LX). Investors in Series LX securities also want to receive a monthly cash flow of 5% per year.

Series LF and Series LF5 securities are offered to retail investors investing a minimum of \$500 (\$5,000 for Series LF5), who are enrolled in the LBC Private Banking sponsored fee-for-service program. Investors in Series LF5 securities also want to receive a monthly cash flow of 5% per year.

Series LW and Series LW5 securities are offered through our Preferred Pricing Program to certain high net worth investors who invest a minimum of \$100,000. Investors in Series LW5 securities also want to receive a monthly cash flow of 5% per year.

Series LM securities are no longer available for sale, except that pre-authorized contribution plans that were in place as at November 25, 2015, may continue.

Effective June 1, 2022, an investor may purchase the Fund under a sales charge purchase option and a no-load purchase option. Not all purchase options are available under each series of the Fund. The sales charge under the sales charge purchase option is negotiated by the investor with their dealer. Securities purchased before June 1, 2022, under the redemption charge purchase option may continue to be held in investor accounts. Investors may switch from securities of a Mackenzie fund previously purchased under the redemption charge purchase option to securities of other Mackenzie funds, under the redemption charge purchase option, until such time as the redemption schedule has expired. For further details, please refer to the Fund's Simplified Prospectus and Fund Facts.

SYMMETRY FIXED INCOME PORTFOLIO

INTERIM MANAGEMENT REPORT OF FUND PERFORMANCE | For the Period Ended September 30, 2025

Fund Formation and Series Information (cont'd)

Series	Inception/ Reinstatement Date	Management Fee	Administration Fee
Series A	February 12, 2004	1.00%	0.15%
Series AR	December 5, 2011	1.00%	0.15%
Series D	March 19, 2014	0.50%	0.15%
Series F	March 29, 2004	0.45%	0.15%
Series F5	September 30, 2014	0.45%	0.15%
Series FB	October 26, 2015	0.50%	0.15%
Series FR	October 3, 2022	0.50%	0.15%
Series I	July 19, 2004	0.95%	0.15%
Series O	April 1, 2010	— ⁽¹⁾	n/a
Series PW	October 17, 2013	0.95%	0.15%
Series PWFB	April 3, 2017	0.45%	0.15%
Series PWR	April 1, 2019	0.95%	0.15%
Series PWT5	April 3, 2017	0.95%	0.15%
Series PWX	January 3, 2014	— ⁽²⁾	— ⁽²⁾
Series T5	June 27, 2013	1.00%	0.15%
Series W	February 14, 2005	— ⁽³⁾	0.15%
Series LB	January 20, 2012	1.00%	0.15%
Series LF	December 7, 2018	0.45%	0.15%
Series LF5	December 7, 2018	0.45%	0.15%
Series LM	December 19, 2012	1.00%	0.15%
Series LW	December 1, 2017	0.95%	0.15%
Series LW5	December 1, 2017	0.95%	0.15%
Series LX	May 15, 2013	1.00%	0.15%

(1) This fee is negotiable and payable directly to Mackenzie by investors in this series.

(2) This fee is payable directly to Mackenzie by investors in this series through redemptions of their securities.

(3) The management fee for Series W securities is payable directly by the investor to Mackenzie.