

# MACKENZIE GQE GLOBAL EQUITY FUND

(Formerly Mackenzie Global Equity Fund)

---

## **Interim Management Report of Fund Performance**

For the Six-Month Period Ended September 30, 2025

*This Interim Management Report of Fund Performance contains financial highlights but does not contain either the interim financial report or annual financial statements of the investment fund. You may obtain a copy of the interim financial report or annual financial statements, at no cost, by contacting us using one of the methods noted under Fund Formation and Series Information or by visiting the SEDAR+ website at [www.sedarplus.ca](http://www.sedarplus.ca).*

*Securityholders may also contact us using one of these methods to request a copy of the investment fund's proxy voting policies and procedures, proxy voting disclosure record or quarterly portfolio disclosure. For more information, please refer to the Fund's Simplified Prospectus and Fund Facts, which may also be obtained, at no cost, using any of the methods outlined above.*

*For the Fund's current net asset values per security and for more recent information on general market events, please visit our website.*

### **A NOTE ON FORWARD-LOOKING STATEMENTS**

*This report may contain forward-looking statements that reflect our current expectations or forecasts of future events. Forward-looking statements include statements that are predictive in nature, depend upon or refer to future events or conditions, or include words such as "expects", "anticipates", "intends", "plans", "believes", "estimates", "preliminary", "typical" and other similar expressions. In addition, these statements may relate to future corporate actions, future financial performance of a fund or a security and their future investment strategies and prospects. Forward-looking statements are inherently subject to, among other things, risks, uncertainties and assumptions that could cause actual events, results, performance or prospects to differ materially from those expressed in, or implied by, these forward-looking statements. These risks, uncertainties and assumptions include, without limitation, general economic, political and market factors in North America and internationally, interest and foreign exchange rates, the volatility of global equity and capital markets, business competition, technological change, changes in government regulations, changes in securities laws and regulations, changes in tax laws, unexpected judicial or regulatory proceedings, catastrophic events, outbreaks of disease or pandemics (such as COVID-19), and the ability of Mackenzie to attract or retain key employees. The foregoing list of important risks, uncertainties and assumptions is not exhaustive. Please consider these and other factors carefully and do not place undue reliance on forward-looking statements.*

*The forward-looking information contained in this report is current only as of the date of this report. There should not be an expectation that such information will in all circumstances be updated, supplemented or revised whether as a result of new information, changing circumstances, future events or otherwise.*



**MACKENZIE**  
Investments

# MACKENZIE GQE GLOBAL EQUITY FUND

(Formerly Mackenzie Global Equity Fund)

INTERIM MANAGEMENT REPORT OF FUND PERFORMANCE | For the Period Ended September 30, 2025

## Management Discussion of Fund Performance

November 13, 2025

This Management Discussion of Fund Performance presents the portfolio management team's view on the significant factors and developments that have affected the Fund's performance and outlook in the six-month period ended September 30, 2025 (the "period"). If the Fund was established during the period, "period" represents the period since inception.

In this report, "Mackenzie" and "the Manager" refer to Mackenzie Financial Corporation, the manager of the Fund. In addition, net asset value ("NAV") refers to the value of the Fund as calculated for transaction purposes, on which the discussion of Fund performance is based.

Please read *A Note on Forward-Looking Statements* on the first page of this document.

## Results of Operations

### Investment Performance

The performance of all series in the current and previous periods is shown in the *Past Performance* section of the report. Performance will vary by series primarily because fees and expenses differ between series, or because securities of a series were not issued and outstanding for the entire reporting period. Please refer to the *Fund Formation and Series Information* section of this report for the varying management and administration fees payable by each series. The following comparison to market indices is intended to help investors understand the Fund's performance relative to the general performance of the markets. However, the Fund's mandate may be different from that of the indices shown.

During the period, the Fund's Series A securities returned 19.7% (after deducting fees and expenses paid by the series). This compares with the MSCI World (Net) Index return of 15.7%. All index and series returns are calculated on a total return basis in Canadian dollar terms. Investors cannot invest in an index without incurring fees, expenses and commissions, which are not reflected in the index returns.

Global equities performed well over the period as shares of U.S. mega-capitalization companies involved in artificial intelligence ("AI") reached new highs and the U.S. Federal Reserve and European Central Bank reduced policy interest rates. Continued AI investment, robust corporate earnings and a weakening U.S. dollar also supported global investor sentiment. Asian equity markets were driven by strength in technology and semiconductor-related stocks, while Chinese equities outperformed in response to aggressive monetary policy easing and expanded market access for foreign investors.

Within the MSCI World (Net) Index, Africa and the Middle East and North America were the best-performing regions in Canadian dollar terms, while Europe and Asia Pacific (ex Japan) were the weakest. The information technology, communication services and industrials sectors were the strongest performers, while health care, energy and consumer staples were the weakest.

The Fund outperformed the index, with stock selection in the United States and the United Kingdom contributing to performance. In sector terms, stock selection in financials and industrials contributed to performance.

Over the period, neither portfolio activity nor market developments significantly changed the positioning of the Fund.

## Net Assets

The Fund's net assets increased by 98.5% during the period to \$1.8 billion. This change was composed primarily of \$247.7 million in net income (including any interest and/or dividend income) from investment performance, after deducting fees and expenses, and an increase of \$621.2 million due to net securityholder activity (including sales, redemptions and cash distributions).

## Fees and Expenses

The annualized management expense ratio ("MER") for each series during the period ended September 30, 2025, was generally similar to the MER for the year ended March 31, 2025. Total expenses paid vary from period to period mainly as a result of changes in average assets in each series. The MERs for all series are presented in the *Financial Highlights* section of this report.

## Recent Developments

The Fund rebalances and trades daily based on the portfolio management team's assessment of the return potential of individual stocks, including the impact of transaction costs. The team's quantitative, bottom-up stock selection process aims to add portfolio value in a variety of market conditions through investments in both growth- and value-oriented stocks and in small-, mid- and large-capitalization stocks. As such, the team does not routinely generate market expectations and therefore rarely makes investment decisions according to macroeconomic forecasts.

Effective September 29, 2025, the Fund was renamed Mackenzie GQE Global Equity Fund.

## Related Party Transactions

### Management and Administration Services

For each applicable series, the Fund paid management fees and administration fees to the Manager at the annual rates specified under *Fund Formation and Series Information* in this report and as more fully described in the Simplified Prospectus. In return for the administration fees, the Manager pays all costs and expenses (other than certain specified fund costs) required to operate the Fund that are not included in management fees. See also *Management Fees*.

### Other Related Party Transactions

Investment funds managed by Mackenzie and its affiliates may invest in the Fund. All these investments are made on a prospectus-exempt basis in accordance with the investment objectives of those funds. At September 30, 2025, funds managed by Mackenzie owned 5.5% of the Fund's NAV, funds managed by I.G. Investment Management, Ltd. owned less than 0.1% of the Fund's NAV, and funds managed by The Canada Life Assurance Company and Canada Life Investment Management Ltd. owned less than 0.1% of the Fund's NAV. All related party transactions are based on the NAV per security on each transaction day.

At September 30, 2025, Mackenzie had an investment of \$0.04 million in the Fund (less than 0.1% of the Fund's NAV).

The Fund did not rely on an approval, positive recommendation or standing instruction from the Mackenzie Funds' Independent Review Committee with respect to any related party transactions in the period.

# MACKENZIE GQE GLOBAL EQUITY FUND

(Formerly Mackenzie Global Equity Fund)

INTERIM MANAGEMENT REPORT OF FUND PERFORMANCE | For the Period Ended September 30, 2025

## Past Performance

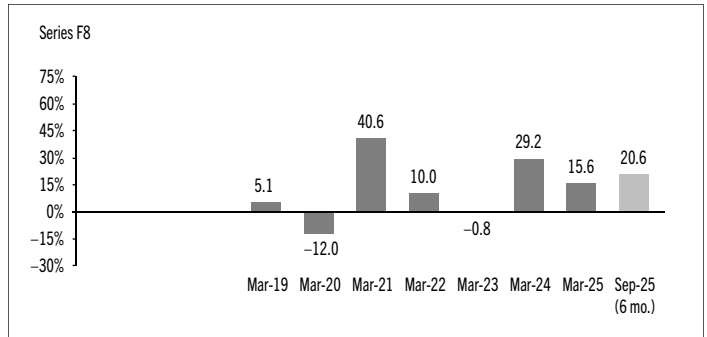
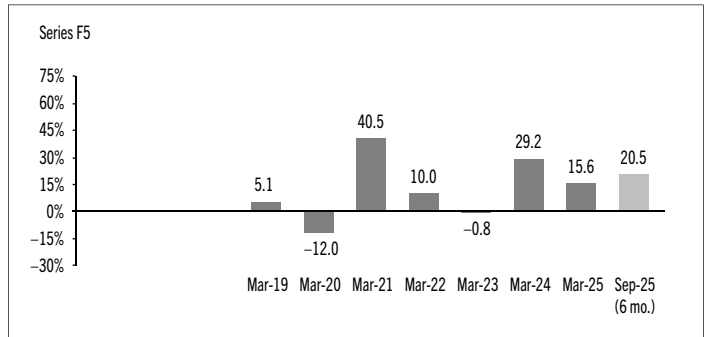
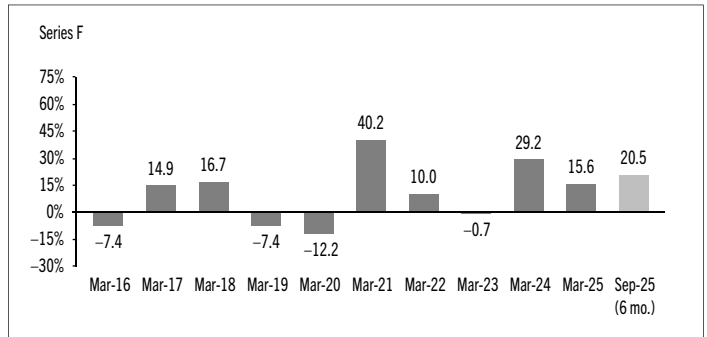
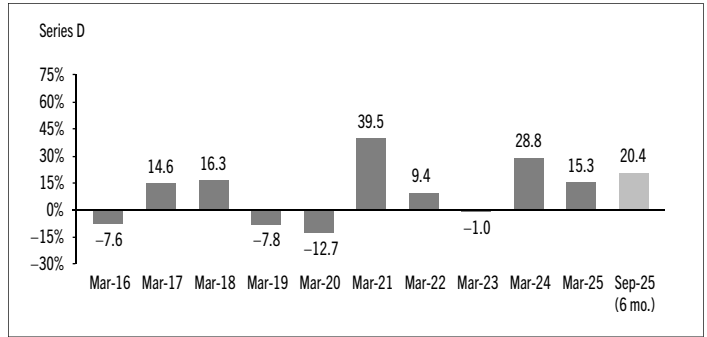
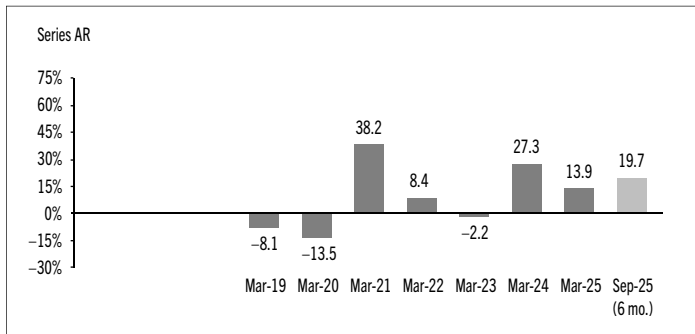
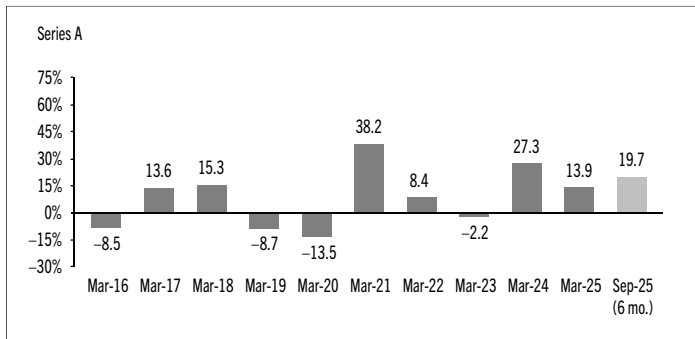
The Fund's performance information assumes all distributions made by the Fund in the periods presented are reinvested in additional securities of the relevant series of the Fund. The performance information does not take into account sales, redemption, distribution or other optional charges, or income taxes payable by any investor that would have reduced returns or performance. The past performance of the Fund is not necessarily an indication of how it will perform in the future.

If you hold this Fund outside of a registered plan, income and capital gains distributions paid to you increase your income for tax purposes whether paid to you in cash or reinvested in additional securities of the Fund. The amount of reinvested taxable distributions is added to the adjusted cost base of the securities that you own. This would decrease your capital gain or increase your capital loss when you later redeem from the Fund, thereby ensuring that you are not taxed on this amount again. Please consult your tax advisor regarding your personal tax situation.

On November 25, 2016, the Fund changed its mandate and switched from a multi-manager approach to a rules-based investment approach. The past performance before this date was achieved under the previous objectives.

## Year-by-Year Returns

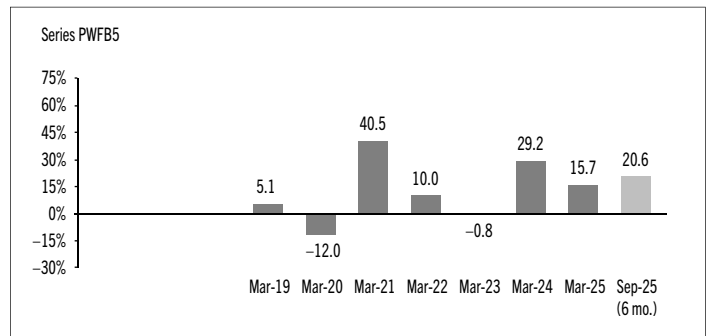
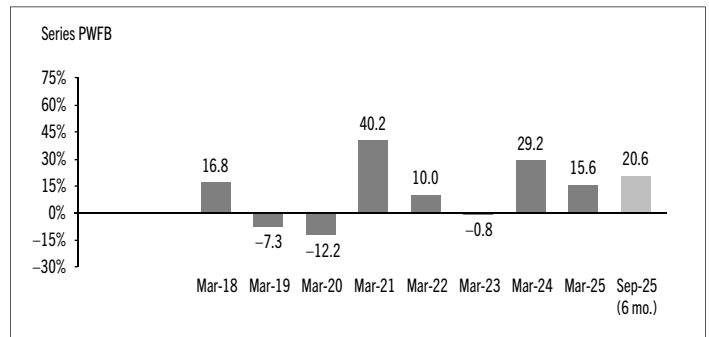
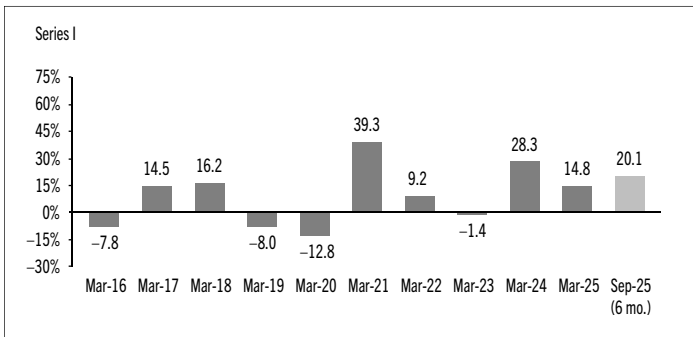
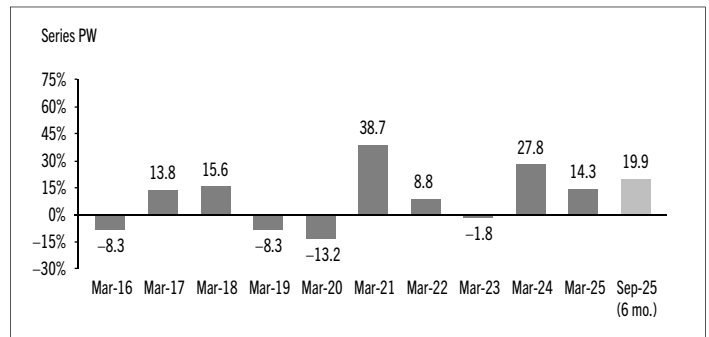
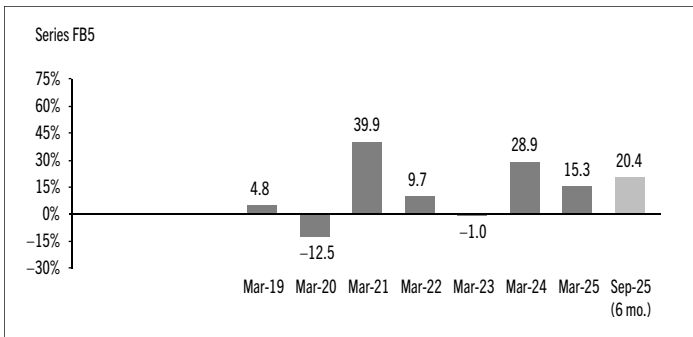
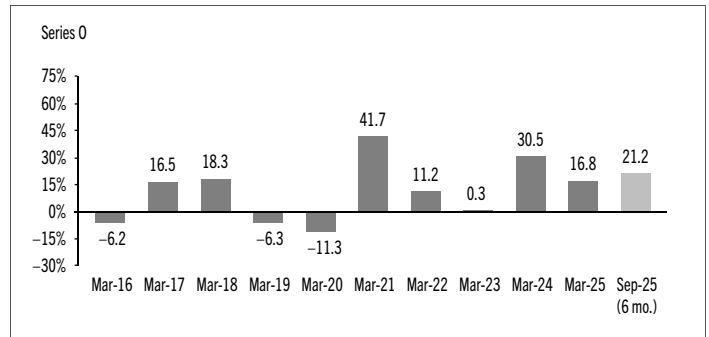
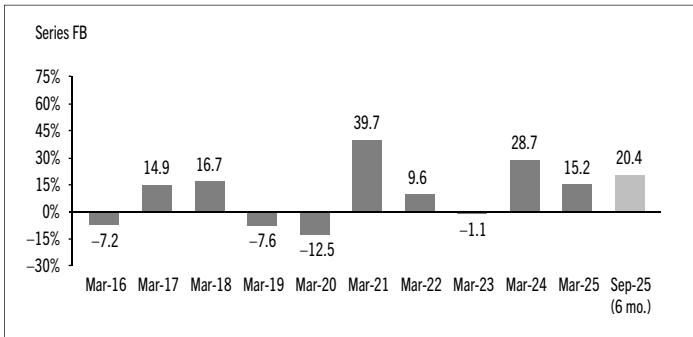
The following bar charts present the performance of each series of the Fund for each of the fiscal periods shown. The charts show, in percentage terms, how much an investment made on the first day of each fiscal period, or on the series inception or reinstatement date, as applicable, would have increased or decreased by the last day of the fiscal period presented. Series inception or reinstatement dates can be found under *Fund Formation and Series Information*.



# MACKENZIE GQE GLOBAL EQUITY FUND

(Formerly Mackenzie Global Equity Fund)

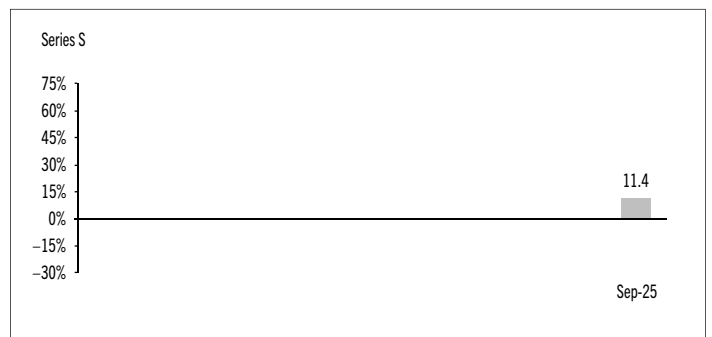
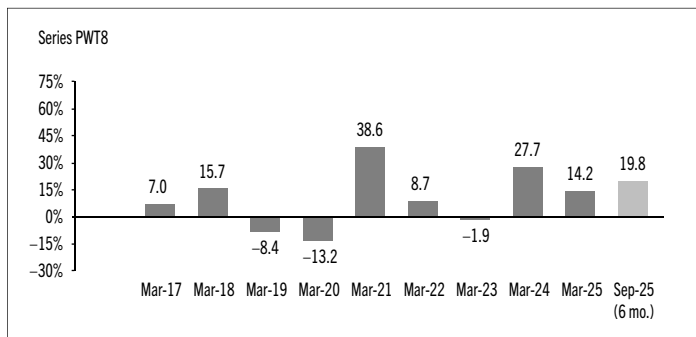
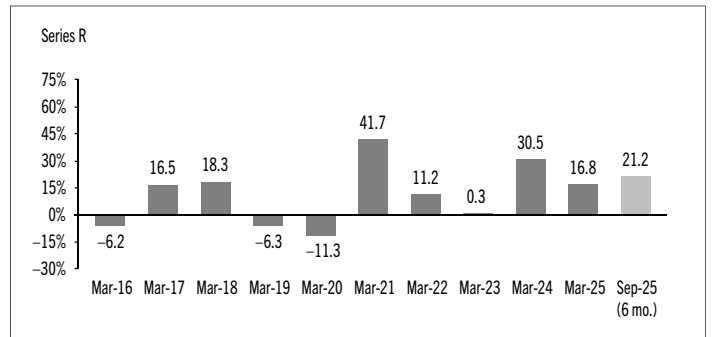
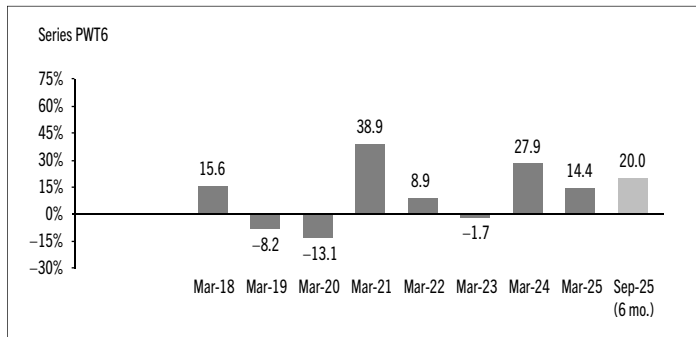
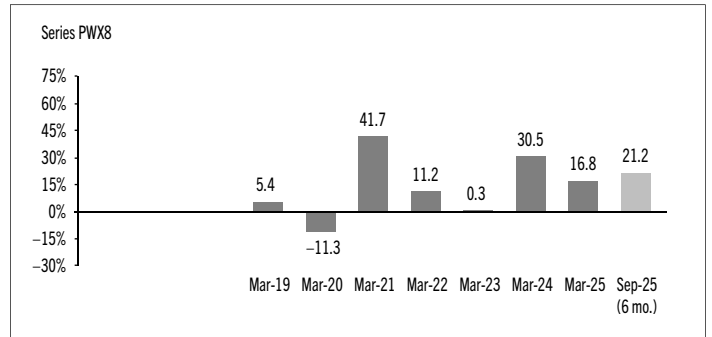
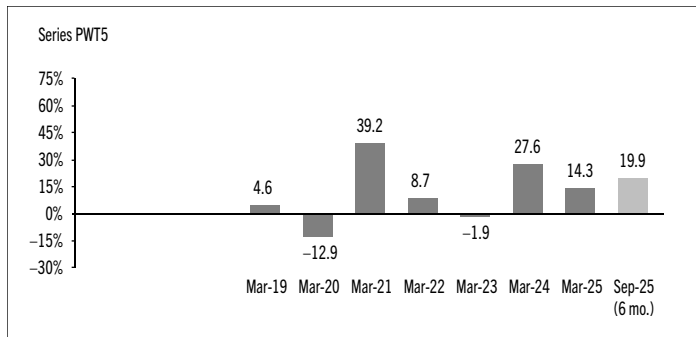
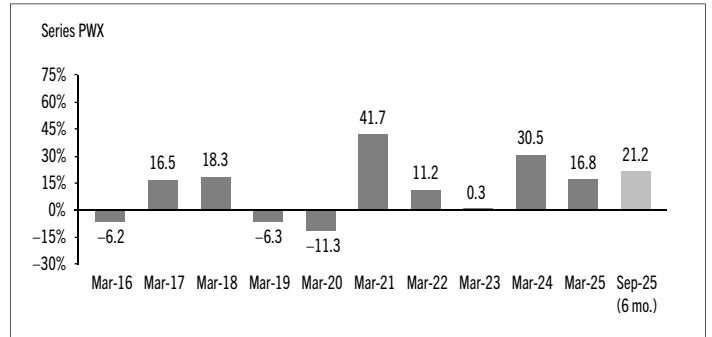
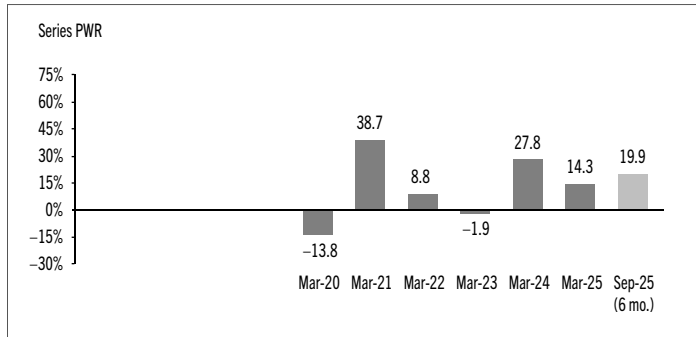
INTERIM MANAGEMENT REPORT OF FUND PERFORMANCE | For the Period Ended September 30, 2025



# MACKENZIE GQE GLOBAL EQUITY FUND

(Formerly Mackenzie Global Equity Fund)

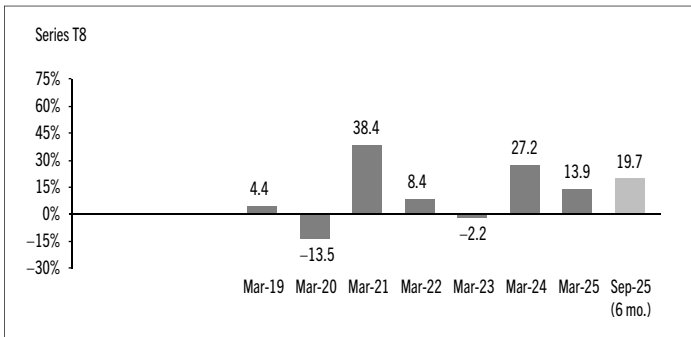
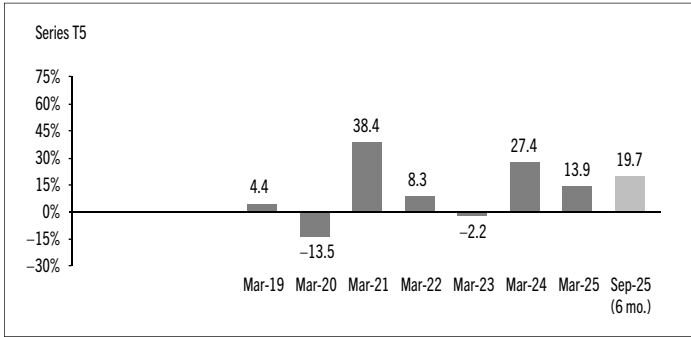
INTERIM MANAGEMENT REPORT OF FUND PERFORMANCE | For the Period Ended September 30, 2025



# MACKENZIE GQE GLOBAL EQUITY FUND

(Formerly Mackenzie Global Equity Fund)

INTERIM MANAGEMENT REPORT OF FUND PERFORMANCE | For the Period Ended September 30, 2025



# MACKENZIE GQE GLOBAL EQUITY FUND

(Formerly Mackenzie Global Equity Fund)

INTERIM MANAGEMENT REPORT OF FUND PERFORMANCE | For the Period Ended September 30, 2025

## Summary of Investment Portfolio at September 30, 2025

PORTFOLIO ALLOCATION	% OF NAV
Equities	96.9
Cash and cash equivalents	3.1

REGIONAL ALLOCATION	% OF NAV
United States	68.3
Canada	5.9
Japan	5.7
United Kingdom	4.5
Cash and cash equivalents	3.1
Australia	2.8
Other	1.8
Germany	1.6
Switzerland	1.3
Spain	1.1
Italy	0.9
Bermuda	0.7
France	0.6
Luxembourg	0.6
Israel	0.6
Monaco	0.5

SECTOR ALLOCATION	% OF NAV
Information technology	28.5
Financials	16.5
Industrials	12.6
Communication services	9.9
Consumer discretionary	9.0
Health care	8.9
Consumer staples	4.8
Materials	3.4
Cash and cash equivalents	3.1
Energy	1.9
Utilities	1.1
Real estate	0.3

TOP 25 POSITIONS	% OF NAV
Issuer	
NVIDIA Corp.	6.3
Apple Inc.	5.4
Microsoft Corp.	5.2
Alphabet Inc.	3.9
Amazon.com Inc.	3.3
Cash and cash equivalents	3.1
Meta Platforms Inc.	2.7
Broadcom Inc.	1.9
Mastercard Inc.	1.3
Mitsubishi UFJ Financial Group Inc.	1.2
Sumitomo Mitsui Financial Group Inc.	1.1
Siemens Energy AG	1.1
Lam Research Corp.	1.1
Micron Technology Inc.	1.1
Intel Corp.	1.0
Qantas Airways Ltd.	1.0
Suncorp Group Ltd.	1.0
AtkinsRéalis Group	1.0
Caterpillar Inc.	1.0
Pfizer Inc.	0.9
The Charles Schwab Corp.	0.9
Booking Holdings Inc.	0.9
Bank of America Corp.	0.9
Saputo Inc.	0.9
Stantec Inc.	0.9

<b>Top long positions as a percentage of total net asset value</b>	<b>49.1</b>
--	-------------

*The Fund held no short positions at the end of the period.*

*The investments and percentages may have changed since September 30, 2025, due to the ongoing portfolio transactions of the Fund. Quarterly updates of holdings are available within 60 days of the end of each quarter except for March 31, the Fund's fiscal year-end, when they are available within 90 days.*

# MACKENZIE GQE GLOBAL EQUITY FUND

(Formerly Mackenzie Global Equity Fund)

INTERIM MANAGEMENT REPORT OF FUND PERFORMANCE | For the Period Ended September 30, 2025

## Financial Highlights

The following tables show selected key financial information about the Fund and are intended to help you understand the Fund's financial performance for each of the fiscal periods presented below. If during the period a fund or series was established or reinstated, "period" represents the period from inception or reinstatement to the end of that fiscal period. Series inception or reinstatement dates can be found under *Fund Formation and Series Information*.

### THE FUND'S NET ASSETS PER SECURITY (\$)¹

	Sep. 30 2025	Mar. 31 2025	Mar. 31 2024	Mar. 31 2023	Mar. 31 2022	Mar. 31 2021
<b>Series A</b>						
<b>Net assets, beginning of period</b>	22.84	20.05	15.75	16.18	14.92	10.80
<b>Increase (decrease) from operations:</b>						
Total revenue	0.23	0.42	0.27	0.49	0.32	0.33
Total expenses	(0.32)	(0.58)	(0.45)	(0.39)	(0.42)	(0.36)
Realized gains (losses) for the period	0.10	1.04	1.48	(0.49)	1.51	0.98
Unrealized gains (losses) for the period	4.66	1.51	2.91	(0.11)	(0.05)	3.21
<b>Total increase (decrease) from operations²</b>	<b>4.67</b>	<b>2.39</b>	<b>4.21</b>	<b>(0.50)</b>	<b>1.36</b>	<b>4.16</b>
<b>Distributions:</b>						
From net investment income (excluding Canadian dividends)	-	-	-	(0.06)	-	-
From Canadian dividends	-	-	-	(0.02)	-	-
From capital gains	-	-	-	-	-	-
Return of capital	-	-	-	-	-	-
<b>Total annual distributions³</b>	<b>-</b>	<b>-</b>	<b>-</b>	<b>(0.08)</b>	<b>-</b>	<b>-</b>
<b>Net assets, end of period</b>	<b>27.33</b>	<b>22.84</b>	<b>20.05</b>	<b>15.75</b>	<b>16.18</b>	<b>14.92</b>
<b>Series AR</b>						
<b>Net assets, beginning of period</b>	16.77	14.72	11.57	11.88	10.96	7.93
<b>Increase (decrease) from operations:</b>						
Total revenue	0.17	0.29	0.20	0.36	0.23	0.24
Total expenses	(0.24)	(0.43)	(0.34)	(0.29)	(0.31)	(0.27)
Realized gains (losses) for the period	0.14	0.69	1.34	0.03	0.62	0.54
Unrealized gains (losses) for the period	3.41	1.06	2.14	(0.08)	(0.03)	2.38
<b>Total increase (decrease) from operations²</b>	<b>3.48</b>	<b>1.61</b>	<b>3.34</b>	<b>0.02</b>	<b>0.51</b>	<b>2.89</b>
<b>Distributions:</b>						
From net investment income (excluding Canadian dividends)	-	-	-	(0.04)	-	-
From Canadian dividends	-	-	-	(0.01)	-	-
From capital gains	-	-	-	-	-	-
Return of capital	-	-	-	-	-	-
<b>Total annual distributions³</b>	<b>-</b>	<b>-</b>	<b>-</b>	<b>(0.05)</b>	<b>-</b>	<b>-</b>
<b>Net assets, end of period</b>	<b>20.06</b>	<b>16.77</b>	<b>14.72</b>	<b>11.57</b>	<b>11.88</b>	<b>10.96</b>

Series D	Sep. 30 2025	Mar. 31 2025	Mar. 31 2024	Mar. 31 2023	Mar. 31 2022	Mar. 31 2021
<b>Net assets, beginning of period</b>	24.24	21.03	16.34	16.80	15.46	11.10
<b>Increase (decrease) from operations:</b>						
Total revenue	0.25	0.46	0.29	0.51	0.33	0.34
Total expenses	(0.18)	(0.33)	(0.26)	(0.22)	(0.29)	(0.26)
Realized gains (losses) for the period	(0.16)	1.39	1.80	0.08	1.51	0.82
Unrealized gains (losses) for the period	5.01	1.67	3.05	(0.11)	(0.05)	3.33
<b>Total increase (decrease) from operations²</b>	<b>4.92</b>	<b>3.19</b>	<b>4.88</b>	<b>0.26</b>	<b>1.50</b>	<b>4.23</b>
<b>Distributions:</b>						
From net investment income (excluding Canadian dividends)	-	-	(0.02)	(0.20)	(0.06)	(0.03)
From Canadian dividends	-	-	-	(0.07)	(0.05)	-
From capital gains	-	-	-	-	-	-
Return of capital	-	-	-	-	-	-
<b>Total annual distributions³</b>	<b>-</b>	<b>-</b>	<b>(0.02)</b>	<b>(0.27)</b>	<b>(0.11)</b>	<b>(0.03)</b>
<b>Net assets, end of period</b>	<b>29.18</b>	<b>24.24</b>	<b>21.03</b>	<b>16.34</b>	<b>16.80</b>	<b>15.46</b>
<b>Series F</b>						
<b>Net assets, beginning of period</b>	14.88	12.88	9.98	10.27	9.43	6.75
<b>Increase (decrease) from operations:</b>						
Total revenue	0.15	0.21	0.18	0.31	0.20	0.21
Total expenses	(0.09)	(0.17)	(0.13)	(0.11)	(0.12)	(0.11)
Realized gains (losses) for the period	0.29	0.25	1.23	(0.20)	0.81	0.61
Unrealized gains (losses) for the period	2.99	0.77	1.86	(0.07)	(0.03)	2.02
<b>Total increase (decrease) from operations²</b>	<b>3.34</b>	<b>1.06</b>	<b>3.14</b>	<b>(0.07)</b>	<b>0.86</b>	<b>2.73</b>
<b>Distributions:</b>						
From net investment income (excluding Canadian dividends)	-	-	(0.01)	(0.15)	(0.06)	(0.03)
From Canadian dividends	-	-	-	(0.05)	(0.05)	-
From capital gains	-	-	-	-	-	-
Return of capital	-	-	-	-	-	-
<b>Total annual distributions³</b>	<b>-</b>	<b>-</b>	<b>(0.01)</b>	<b>(0.20)</b>	<b>(0.11)</b>	<b>(0.03)</b>
<b>Net assets, end of period</b>	<b>17.94</b>	<b>14.88</b>	<b>12.88</b>	<b>9.98</b>	<b>10.27</b>	<b>9.43</b>

(1) These calculations are prescribed by securities regulations and are not intended to be a reconciliation between opening and closing net assets per security. This information is derived from the Fund's unaudited interim financial statements and audited annual financial statements. The net assets per security presented in the financial statements may differ from the net asset value per security calculated for fund pricing purposes. An explanation of these differences, if any, can be found in the *Notes to Financial Statements*.

(2) Net assets and distributions are based on the actual number of securities outstanding at the relevant time. The increase/decrease from operations is based on the weighted average number of securities outstanding over the fiscal period.

(3) Distributions were paid in cash/reinvested in additional securities of the Fund, or both.

# MACKENZIE GQE GLOBAL EQUITY FUND

(Formerly Mackenzie Global Equity Fund)

INTERIM MANAGEMENT REPORT OF FUND PERFORMANCE | For the Period Ended September 30, 2025

## THE FUND'S NET ASSETS PER SECURITY (\$)¹ (cont'd)

	Sep. 30 2025	Mar. 31 2025	Mar. 31 2024	Mar. 31 2023	Mar. 31 2022	Mar. 31 2021
<b>Series F5</b>						
<b>Net assets, beginning of period</b>	21.95	19.85	16.10	17.54	16.87	12.70
<b>Increase (decrease) from operations:</b>						
Total revenue	0.22	0.29	0.27	0.51	0.35	0.38
Total expenses	(0.14)	(0.26)	(0.20)	(0.19)	(0.21)	(0.17)
Realized gains (losses) for the period	0.28	(1.27)	1.24	(0.39)	1.00	1.09
Unrealized gains (losses) for the period	4.38	1.05	2.90	(0.12)	(0.05)	3.71
<b>Total increase (decrease) from operations²</b>	<b>4.74</b>	<b>(0.19)</b>	<b>4.21</b>	<b>(0.19)</b>	<b>1.09</b>	<b>5.01</b>
<b>Distributions:</b>						
From net investment income (excluding Canadian dividends)	–	–	(0.02)	(0.23)	(0.10)	(0.06)
From Canadian dividends	–	–	–	(0.09)	(0.09)	–
From capital gains	–	–	–	–	–	–
Return of capital	(0.56)	(0.94)	(0.79)	(0.89)	(0.83)	(0.79)
<b>Total annual distributions³</b>	<b>(0.56)</b>	<b>(0.94)</b>	<b>(0.81)</b>	<b>(1.21)</b>	<b>(1.02)</b>	<b>(0.85)</b>
<b>Net assets, end of period</b>	<b>25.82</b>	<b>21.95</b>	<b>19.85</b>	<b>16.10</b>	<b>17.54</b>	<b>16.87</b>
<b>Series F8</b>						
<b>Net assets, beginning of period</b>	18.04	16.76	13.99	15.81	15.64	12.16
<b>Increase (decrease) from operations:</b>						
Total revenue	0.17	0.28	0.24	0.45	0.32	0.36
Total expenses	(0.11)	(0.21)	(0.18)	(0.17)	(0.19)	(0.16)
Realized gains (losses) for the period	0.79	0.70	3.19	(0.30)	1.43	1.02
Unrealized gains (losses) for the period	3.42	1.00	2.51	(0.10)	(0.05)	3.50
<b>Total increase (decrease) from operations²</b>	<b>4.27</b>	<b>1.77</b>	<b>5.76</b>	<b>(0.12)</b>	<b>1.51</b>	<b>4.72</b>
<b>Distributions:</b>						
From net investment income (excluding Canadian dividends)	–	–	(0.02)	(0.20)	(0.10)	(0.06)
From Canadian dividends	–	–	–	(0.07)	(0.09)	–
From capital gains	–	–	–	–	–	–
Return of capital	(0.75)	(1.28)	(1.09)	(1.30)	(1.22)	(1.20)
<b>Total annual distributions³</b>	<b>(0.75)</b>	<b>(1.28)</b>	<b>(1.11)</b>	<b>(1.57)</b>	<b>(1.41)</b>	<b>(1.26)</b>
<b>Net assets, end of period</b>	<b>20.91</b>	<b>18.04</b>	<b>16.76</b>	<b>13.99</b>	<b>15.81</b>	<b>15.64</b>
<b>Series FB</b>						
<b>Net assets, beginning of period</b>	21.69	18.84	14.64	15.06	13.85	9.93
<b>Increase (decrease) from operations:</b>						
Total revenue	0.22	0.33	0.26	0.45	0.30	0.30
Total expenses	(0.17)	(0.32)	(0.24)	(0.21)	(0.23)	(0.20)
Realized gains (losses) for the period	0.09	0.60	1.10	(0.29)	1.35	0.87
Unrealized gains (losses) for the period	4.43	1.17	2.72	(0.10)	(0.04)	2.98
<b>Total increase (decrease) from operations²</b>	<b>4.57</b>	<b>1.78</b>	<b>3.84</b>	<b>(0.15)</b>	<b>1.38</b>	<b>3.95</b>
<b>Distributions:</b>						
From net investment income (excluding Canadian dividends)	–	–	(0.02)	(0.18)	(0.06)	(0.03)
From Canadian dividends	–	–	–	(0.06)	(0.06)	–
From capital gains	–	–	–	–	–	–
Return of capital	–	–	–	–	–	–
<b>Total annual distributions³</b>	<b>–</b>	<b>–</b>	<b>(0.02)</b>	<b>(0.24)</b>	<b>(0.12)</b>	<b>(0.03)</b>
<b>Net assets, end of period</b>	<b>26.11</b>	<b>21.69</b>	<b>18.84</b>	<b>14.64</b>	<b>15.06</b>	<b>13.85</b>

	Sep. 30 2025	Mar. 31 2025	Mar. 31 2024	Mar. 31 2023	Mar. 31 2022	Mar. 31 2021
<b>Series FB5</b>						
<b>Net assets, beginning of period</b>	21.71	19.67	15.99	17.42	16.77	12.66
<b>Increase (decrease) from operations:</b>						
Total revenue	0.22	0.43	0.27	0.51	0.35	0.37
Total expenses	(0.16)	(0.30)	(0.24)	(0.22)	(0.25)	(0.23)
Realized gains (losses) for the period	(0.13)	1.28	1.59	(0.34)	1.54	1.09
Unrealized gains (losses) for the period	4.44	1.54	2.91	(0.11)	(0.05)	3.69
<b>Total increase (decrease) from operations²</b>	<b>4.37</b>	<b>2.95</b>	<b>4.53</b>	<b>(0.16)</b>	<b>1.59</b>	<b>4.92</b>
<b>Distributions:</b>						
From net investment income (excluding Canadian dividends)	–	–	(0.02)	(0.20)	(0.09)	(0.04)
From Canadian dividends	–	–	–	(0.08)	(0.08)	–
From capital gains	–	–	–	–	–	–
Return of capital	(0.56)	(0.94)	(0.78)	(0.89)	(0.81)	(0.78)
<b>Total annual distributions³</b>	<b>(0.56)</b>	<b>(0.94)</b>	<b>(0.80)</b>	<b>(1.17)</b>	<b>(0.98)</b>	<b>(0.82)</b>
<b>Net assets, end of period</b>	<b>25.50</b>	<b>21.71</b>	<b>19.67</b>	<b>15.99</b>	<b>17.42</b>	<b>16.77</b>

	Sep. 30 2025	Mar. 31 2025	Mar. 31 2024	Mar. 31 2023	Mar. 31 2022	Mar. 31 2021
<b>Series I</b>						
<b>Net assets, beginning of period</b>	16.13	14.06	10.96	11.31	10.43	7.50
<b>Increase (decrease) from operations:</b>						
Total revenue	0.17	0.31	0.19	0.34	0.22	0.23
Total expenses	(0.16)	(0.29)	(0.22)	(0.16)	(0.18)	(0.16)
Realized gains (losses) for the period	(0.11)	1.39	1.13	(0.26)	1.01	0.68
Unrealized gains (losses) for the period	3.34	1.13	2.03	(0.08)	(0.03)	2.24
<b>Total increase (decrease) from operations²</b>	<b>3.24</b>	<b>2.54</b>	<b>3.13</b>	<b>(0.16)</b>	<b>1.02</b>	<b>2.99</b>
<b>Distributions:</b>						
From net investment income (excluding Canadian dividends)	–	–	(0.01)	(0.12)	(0.05)	(0.02)
From Canadian dividends	–	–	–	(0.05)	(0.04)	–
From capital gains	–	–	–	–	–	–
Return of capital	–	–	–	–	–	–
<b>Total annual distributions³</b>	<b>–</b>	<b>–</b>	<b>(0.01)</b>	<b>(0.17)</b>	<b>(0.09)</b>	<b>(0.02)</b>
<b>Net assets, end of period</b>	<b>19.38</b>	<b>16.13</b>	<b>14.06</b>	<b>10.96</b>	<b>11.31</b>	<b>10.43</b>

	Sep. 30 2025	Mar. 31 2025	Mar. 31 2024	Mar. 31 2023	Mar. 31 2022	Mar. 31 2021
<b>Series IG</b>						
<b>Net assets, beginning of period</b>	10.00	n/a	n/a	n/a	n/a	n/a
<b>Increase (decrease) from operations:</b>						
Total revenue	0.02	n/a	n/a	n/a	n/a	n/a
Total expenses	–	n/a	n/a	n/a	n/a	n/a
Realized gains (losses) for the period	0.21	n/a	n/a	n/a	n/a	n/a
Unrealized gains (losses) for the period	0.31	n/a	n/a	n/a	n/a	n/a
<b>Total increase (decrease) from operations²</b>	<b>0.54</b>	<b>n/a</b>	<b>n/a</b>	<b>n/a</b>	<b>n/a</b>	<b>n/a</b>
<b>Distributions:</b>						
From net investment income (excluding Canadian dividends)	–	n/a	n/a	n/a	n/a	n/a
From Canadian dividends	–	n/a	n/a	n/a	n/a	n/a
From capital gains	–	n/a	n/a	n/a	n/a	n/a
Return of capital	–	n/a	n/a	n/a	n/a	n/a
<b>Total annual distributions³</b>	<b>–</b>	<b>n/a</b>	<b>n/a</b>	<b>n/a</b>	<b>n/a</b>	<b>n/a</b>
<b>Net assets, end of period</b>	<b>10.54</b>	<b>n/a</b>	<b>n/a</b>	<b>n/a</b>	<b>n/a</b>	<b>n/a</b>

# MACKENZIE GQE GLOBAL EQUITY FUND

(Formerly Mackenzie Global Equity Fund)

INTERIM MANAGEMENT REPORT OF FUND PERFORMANCE | For the Period Ended September 30, 2025

## THE FUND'S NET ASSETS PER SECURITY (\$)¹ (cont'd)

	Sep. 30 2025	Mar. 31 2025	Mar. 31 2024	Mar. 31 2023	Mar. 31 2022	Mar. 31 2021
<b>Series O</b>						
<b>Net assets, beginning of period</b>	16.83	14.41	11.07	11.40	10.44	7.41
<b>Increase (decrease) from operations:</b>						
Total revenue	0.17	0.29	0.20	0.34	0.22	0.23
Total expenses	(0.01)	(0.02)	(0.02)	(0.01)	(0.01)	(0.02)
Realized gains (losses) for the period	0.12	0.62	1.47	(0.18)	1.02	0.68
Unrealized gains (losses) for the period	3.45	1.06	2.07	(0.08)	(0.03)	2.23
<b>Total increase (decrease) from operations²</b>	<b>3.73</b>	<b>1.95</b>	<b>3.72</b>	<b>0.07</b>	<b>1.20</b>	<b>3.12</b>
<b>Distributions:</b>						
From net investment income (excluding Canadian dividends)	-	-	(0.03)	(0.25)	(0.12)	(0.05)
From Canadian dividends	-	-	-	(0.09)	(0.11)	-
From capital gains	-	-	-	-	-	-
Return of capital	-	-	-	-	-	-
<b>Total annual distributions³</b>	<b>-</b>	<b>-</b>	<b>(0.03)</b>	<b>(0.34)</b>	<b>(0.23)</b>	<b>(0.05)</b>
<b>Net assets, end of period</b>	<b>20.40</b>	<b>16.83</b>	<b>14.41</b>	<b>11.07</b>	<b>11.40</b>	<b>10.44</b>
<b>Series PW</b>						
<b>Net assets, beginning of period</b>	25.21	22.06	17.26	17.74	16.35	11.79
<b>Increase (decrease) from operations:</b>						
Total revenue	0.26	0.43	0.30	0.53	0.35	0.36
Total expenses	(0.30)	(0.55)	(0.43)	(0.36)	(0.40)	(0.34)
Realized gains (losses) for the period	0.26	0.96	1.68	(0.45)	1.47	1.04
Unrealized gains (losses) for the period	5.10	1.56	3.20	(0.12)	(0.05)	3.52
<b>Total increase (decrease) from operations²</b>	<b>5.32</b>	<b>2.40</b>	<b>4.75</b>	<b>(0.40)</b>	<b>1.37</b>	<b>4.58</b>
<b>Distributions:</b>						
From net investment income (excluding Canadian dividends)	-	-	-	(0.11)	(0.02)	(0.01)
From Canadian dividends	-	-	-	(0.04)	(0.02)	-
From capital gains	-	-	-	-	-	-
Return of capital	-	-	-	-	-	-
<b>Total annual distributions³</b>	<b>-</b>	<b>-</b>	<b>-</b>	<b>(0.15)</b>	<b>(0.04)</b>	<b>(0.01)</b>
<b>Net assets, end of period</b>	<b>30.23</b>	<b>25.21</b>	<b>22.06</b>	<b>17.26</b>	<b>17.74</b>	<b>16.35</b>
<b>Series PWFB</b>						
<b>Net assets, beginning of period</b>	20.61	17.84	13.83	14.22	13.07	9.35
<b>Increase (decrease) from operations:</b>						
Total revenue	0.21	0.31	0.24	0.43	0.28	0.28
Total expenses	(0.13)	(0.24)	(0.18)	(0.15)	(0.17)	(0.15)
Realized gains (losses) for the period	0.26	0.18	1.46	(0.37)	0.66	0.80
Unrealized gains (losses) for the period	4.20	1.11	2.58	(0.10)	(0.04)	2.79
<b>Total increase (decrease) from operations²</b>	<b>4.54</b>	<b>1.36</b>	<b>4.10</b>	<b>(0.19)</b>	<b>0.73</b>	<b>3.72</b>
<b>Distributions:</b>						
From net investment income (excluding Canadian dividends)	-	-	(0.02)	(0.20)	(0.09)	(0.04)
From Canadian dividends	-	-	-	(0.07)	(0.07)	-
From capital gains	-	-	-	-	-	-
Return of capital	-	-	-	-	-	-
<b>Total annual distributions³</b>	<b>-</b>	<b>-</b>	<b>(0.02)</b>	<b>(0.27)</b>	<b>(0.16)</b>	<b>(0.04)</b>
<b>Net assets, end of period</b>	<b>24.85</b>	<b>20.61</b>	<b>17.84</b>	<b>13.83</b>	<b>14.22</b>	<b>13.07</b>

	Sep. 30 2025	Mar. 31 2025	Mar. 31 2024	Mar. 31 2023	Mar. 31 2022	Mar. 31 2021
<b>Series PWFB5</b>						
<b>Net assets, beginning of period</b>	21.97	19.85	16.10	17.54	16.87	12.70
<b>Increase (decrease) from operations:</b>						
Total revenue	0.20	0.43	0.28	0.51	0.35	0.38
Total expenses	(0.14)	(0.24)	(0.20)	(0.19)	(0.20)	(0.17)
Realized gains (losses) for the period	3.19	1.30	1.59	(0.33)	1.55	1.09
Unrealized gains (losses) for the period	3.92	1.55	2.93	(0.12)	(0.05)	3.71
<b>Total increase (decrease) from operations²</b>	<b>7.17</b>	<b>3.04</b>	<b>4.60</b>	<b>(0.13)</b>	<b>1.65</b>	<b>5.01</b>
<b>Distributions:</b>						
From net investment income (excluding Canadian dividends)	-	-	(0.02)	(0.23)	(0.11)	(0.06)
From Canadian dividends	-	-	-	(0.09)	(0.09)	-
From capital gains	-	-	-	-	-	-
Return of capital	(0.56)	(0.95)	(0.79)	(0.89)	(0.83)	(0.79)
<b>Total annual distributions³</b>	<b>(0.56)</b>	<b>(0.95)</b>	<b>(0.81)</b>	<b>(1.21)</b>	<b>(1.03)</b>	<b>(0.85)</b>
<b>Net assets, end of period</b>	<b>25.86</b>	<b>21.97</b>	<b>19.85</b>	<b>16.10</b>	<b>17.54</b>	<b>16.87</b>

	Sep. 30 2025	Mar. 31 2025	Mar. 31 2024	Mar. 31 2023	Mar. 31 2022	Mar. 31 2021
<b>Series PWR</b>						
<b>Net assets, beginning of period</b>	18.29	16.00	12.53	12.87	11.86	8.55
<b>Increase (decrease) from operations:</b>						
Total revenue	0.18	0.30	0.22	0.39	0.25	0.27
Total expenses	(0.22)	(0.41)	(0.32)	(0.27)	(0.30)	(0.26)
Realized gains (losses) for the period	0.37	0.58	1.71	(0.15)	0.57	0.54
Unrealized gains (losses) for the period	3.69	1.10	2.33	(0.09)	(0.04)	2.63
<b>Total increase (decrease) from operations²</b>	<b>4.02</b>	<b>1.57</b>	<b>3.94</b>	<b>(0.12)</b>	<b>0.48</b>	<b>3.18</b>
<b>Distributions:</b>						
From net investment income (excluding Canadian dividends)	-	-	-	(0.07)	(0.02)	-
From Canadian dividends	-	-	-	(0.03)	(0.01)	-
From capital gains	-	-	-	-	-	-
Return of capital	-	-	-	-	-	-
<b>Total annual distributions³</b>	<b>-</b>	<b>-</b>	<b>-</b>	<b>(0.10)</b>	<b>(0.03)</b>	<b>-</b>
<b>Net assets, end of period</b>	<b>21.93</b>	<b>18.29</b>	<b>16.00</b>	<b>12.53</b>	<b>12.87</b>	<b>11.86</b>

	Sep. 30 2025	Mar. 31 2025	Mar. 31 2024	Mar. 31 2023	Mar. 31 2022	Mar. 31 2021
<b>Series PWT5</b>						
<b>Net assets, beginning of period</b>	21.12	19.32	15.85	17.26	16.66	12.63
<b>Increase (decrease) from operations:</b>						
Total revenue	0.21	0.36	0.27	0.50	0.35	0.37
Total expenses	(0.26)	(0.49)	(0.42)	(0.36)	(0.41)	(0.31)
Realized gains (losses) for the period	0.26	1.30	4.94	(0.34)	(1.56)	1.08
Unrealized gains (losses) for the period	4.19	1.29	2.86	(0.11)	(0.05)	3.68
<b>Total increase (decrease) from operations²</b>	<b>4.40</b>	<b>2.46</b>	<b>7.65</b>	<b>(0.31)</b>	<b>(1.67)</b>	<b>4.82</b>
<b>Distributions:</b>						
From net investment income (excluding Canadian dividends)	-	-	-	(0.09)	(0.02)	(0.02)
From Canadian dividends	-	-	-	(0.03)	(0.02)	-
From capital gains	-	-	-	-	-	-
Return of capital	(0.54)	(0.92)	(0.77)	(0.89)	(0.81)	(0.78)
<b>Total annual distributions³</b>	<b>(0.54)</b>	<b>(0.92)</b>	<b>(0.77)</b>	<b>(1.01)</b>	<b>(0.85)</b>	<b>(0.80)</b>
<b>Net assets, end of period</b>	<b>24.70</b>	<b>21.12</b>	<b>19.32</b>	<b>15.85</b>	<b>17.26</b>	<b>16.66</b>

# MACKENZIE GQE GLOBAL EQUITY FUND

(Formerly Mackenzie Global Equity Fund)

INTERIM MANAGEMENT REPORT OF FUND PERFORMANCE | For the Period Ended September 30, 2025

## THE FUND'S NET ASSETS PER SECURITY (\$)¹ (cont'd)

	Sep. 30 2025	Mar. 31 2025	Mar. 31 2024	Mar. 31 2023	Mar. 31 2022	Mar. 31 2021
<b>Series PWT6</b>						
<b>Net assets, beginning of period</b>	18.29	16.86	13.93	15.35	14.95	11.48
<b>Increase (decrease) from operations:</b>						
Total revenue	0.19	0.36	0.24	0.45	0.31	0.34
Total expenses	(0.20)	(0.39)	(0.32)	(0.29)	(0.34)	(0.31)
Realized gains (losses) for the period	(0.11)	1.09	1.33	(0.31)	1.37	0.97
Unrealized gains (losses) for the period	3.72	1.31	2.51	(0.10)	(0.04)	3.32
<b>Total increase (decrease) from operations²</b>	<b>3.60</b>	<b>2.37</b>	<b>3.76</b>	<b>(0.25)</b>	<b>1.30</b>	<b>4.32</b>
<b>Distributions:</b>						
From net investment income (excluding Canadian dividends)	–	–	–	(0.10)	(0.03)	(0.01)
From Canadian dividends	–	–	–	(0.04)	(0.02)	–
From capital gains	–	–	–	–	–	–
Return of capital	(0.57)	(0.96)	(0.82)	(0.93)	(0.88)	(0.86)
<b>Total annual distributions³</b>	<b>(0.57)</b>	<b>(0.96)</b>	<b>(0.82)</b>	<b>(1.07)</b>	<b>(0.93)</b>	<b>(0.87)</b>
<b>Net assets, end of period</b>	<b>21.30</b>	<b>18.29</b>	<b>16.86</b>	<b>13.93</b>	<b>15.35</b>	<b>14.95</b>
<b>Series PWT8</b>						
<b>Net assets, beginning of period</b>	16.12	15.16	12.79	14.44	14.34	11.27
<b>Increase (decrease) from operations:</b>						
Total revenue	0.16	0.25	0.22	0.41	0.29	0.33
Total expenses	(0.20)	(0.38)	(0.31)	(0.29)	(0.35)	(0.32)
Realized gains (losses) for the period	0.20	0.54	1.23	(0.29)	1.31	0.94
Unrealized gains (losses) for the period	3.22	0.90	2.28	(0.09)	(0.04)	3.22
<b>Total increase (decrease) from operations²</b>	<b>3.38</b>	<b>1.31</b>	<b>3.42</b>	<b>(0.26)</b>	<b>1.21</b>	<b>4.17</b>
<b>Distributions:</b>						
From net investment income (excluding Canadian dividends)	–	–	–	(0.08)	(0.02)	–
From Canadian dividends	–	–	–	(0.03)	(0.01)	–
From capital gains	–	–	–	–	–	–
Return of capital	(0.67)	(1.15)	(1.00)	(1.17)	(1.12)	(1.12)
<b>Total annual distributions³</b>	<b>(0.67)</b>	<b>(1.15)</b>	<b>(1.00)</b>	<b>(1.28)</b>	<b>(1.15)</b>	<b>(1.12)</b>
<b>Net assets, end of period</b>	<b>18.56</b>	<b>16.12</b>	<b>15.16</b>	<b>12.79</b>	<b>14.44</b>	<b>14.34</b>
<b>Series PWX</b>						
<b>Net assets, beginning of period</b>	27.07	23.18	17.79	18.33	16.79	11.92
<b>Increase (decrease) from operations:</b>						
Total revenue	0.28	0.39	0.31	0.55	0.36	0.36
Total expenses	(0.01)	(0.02)	(0.03)	(0.02)	(0.02)	(0.04)
Realized gains (losses) for the period	0.07	0.87	1.81	(0.48)	1.57	0.86
Unrealized gains (losses) for the period	5.58	1.41	3.33	(0.12)	(0.05)	3.55
<b>Total increase (decrease) from operations²</b>	<b>5.92</b>	<b>2.65</b>	<b>5.42</b>	<b>(0.07)</b>	<b>1.86</b>	<b>4.73</b>
<b>Distributions:</b>						
From net investment income (excluding Canadian dividends)	–	–	(0.05)	(0.40)	(0.19)	(0.09)
From Canadian dividends	–	–	–	(0.15)	(0.17)	–
From capital gains	–	–	–	–	–	–
Return of capital	–	–	–	–	–	–
<b>Total annual distributions³</b>	<b>–</b>	<b>–</b>	<b>(0.05)</b>	<b>(0.55)</b>	<b>(0.36)</b>	<b>(0.09)</b>
<b>Net assets, end of period</b>	<b>32.81</b>	<b>27.07</b>	<b>23.18</b>	<b>17.79</b>	<b>18.33</b>	<b>16.79</b>

	Sep. 30 2025	Mar. 31 2025	Mar. 31 2024	Mar. 31 2023	Mar. 31 2022	Mar. 31 2021
<b>Series PWX8</b>						
<b>Net assets, beginning of period</b>	18.66	17.14	14.17	16.02	15.81	12.21
<b>Increase (decrease) from operations:</b>						
Total revenue	0.19	0.37	0.24	0.46	0.33	0.36
Total expenses	(0.01)	(0.02)	(0.02)	(0.02)	(0.02)	(0.04)
Realized gains (losses) for the period	(0.10)	1.11	1.39	(0.31)	1.44	1.03
Unrealized gains (losses) for the period	3.80	1.33	2.56	(0.10)	(0.05)	3.52
<b>Total increase (decrease) from operations²</b>	<b>3.88</b>	<b>2.79</b>	<b>4.17</b>	<b>0.03</b>	<b>1.70</b>	<b>4.87</b>
<b>Distributions:</b>						
From net investment income (excluding Canadian dividends)	–	–	(0.04)	(0.32)	(0.17)	(0.08)
From Canadian dividends	–	–	–	(0.12)	(0.15)	–
From capital gains	–	–	–	–	–	–
Return of capital	(0.77)	(1.31)	(1.11)	(1.31)	(1.24)	(1.22)
<b>Total annual distributions³</b>	<b>(0.77)</b>	<b>(1.31)</b>	<b>(1.15)</b>	<b>(1.75)</b>	<b>(1.56)</b>	<b>(1.30)</b>
<b>Net assets, end of period</b>	<b>21.73</b>	<b>18.66</b>	<b>17.14</b>	<b>14.17</b>	<b>16.02</b>	<b>15.81</b>

	Sep. 30 2025	Mar. 31 2025	Mar. 31 2024	Mar. 31 2023	Mar. 31 2022	Mar. 31 2021
<b>Series R</b>						
<b>Net assets, beginning of period</b>	52.34	44.81	34.41	35.43	32.47	23.04
<b>Increase (decrease) from operations:</b>						
Total revenue	0.54	0.08	0.61	1.07	0.69	0.70
Total expenses	(0.02)	–	(0.05)	(0.04)	(0.04)	(0.07)
Realized gains (losses) for the period	0.70	(3.45)	2.52	(0.86)	3.20	2.03
Unrealized gains (losses) for the period	10.70	0.28	6.44	(0.24)	(0.10)	6.94
<b>Total increase (decrease) from operations²</b>	<b>11.92</b>	<b>(3.09)</b>	<b>9.52</b>	<b>(0.07)</b>	<b>3.75</b>	<b>9.60</b>
<b>Distributions:</b>						
From net investment income (excluding Canadian dividends)	–	–	(0.10)	(0.78)	(0.37)	(0.17)
From Canadian dividends	–	–	–	(0.28)	(0.33)	–
From capital gains	–	–	–	–	–	–
Return of capital	–	–	–	–	–	–
<b>Total annual distributions³</b>	<b>–</b>	<b>–</b>	<b>(0.10)</b>	<b>(1.06)</b>	<b>(0.70)</b>	<b>(0.17)</b>
<b>Net assets, end of period</b>	<b>63.43</b>	<b>52.34</b>	<b>44.81</b>	<b>34.41</b>	<b>35.43</b>	<b>32.47</b>

	Sep. 30 2025	Mar. 31 2025	Mar. 31 2024	Mar. 31 2023	Mar. 31 2022	Mar. 31 2021
<b>Series S</b>						
<b>Net assets, beginning of period</b>	10.00	n/a	n/a	n/a	n/a	n/a
<b>Increase (decrease) from operations:</b>						
Total revenue	0.03	n/a	n/a	n/a	n/a	n/a
Total expenses	–	n/a	n/a	n/a	n/a	n/a
Realized gains (losses) for the period	0.49	n/a	n/a	n/a	n/a	n/a
Unrealized gains (losses) for the period	0.62	n/a	n/a	n/a	n/a	n/a
<b>Total increase (decrease) from operations²</b>	<b>1.14</b>	<b>n/a</b>	<b>n/a</b>	<b>n/a</b>	<b>n/a</b>	<b>n/a</b>
<b>Distributions:</b>						
From net investment income (excluding Canadian dividends)	–	n/a	n/a	n/a	n/a	n/a
From Canadian dividends	–	n/a	n/a	n/a	n/a	n/a
From capital gains	–	n/a	n/a	n/a	n/a	n/a
Return of capital	–	n/a	n/a	n/a	n/a	n/a
<b>Total annual distributions³</b>	<b>–</b>	<b>n/a</b>	<b>n/a</b>	<b>n/a</b>	<b>n/a</b>	<b>n/a</b>
<b>Net assets, end of period</b>	<b>11.14</b>	<b>n/a</b>	<b>n/a</b>	<b>n/a</b>	<b>n/a</b>	<b>n/a</b>

# MACKENZIE GQE GLOBAL EQUITY FUND

(Formerly Mackenzie Global Equity Fund)

INTERIM MANAGEMENT REPORT OF FUND PERFORMANCE | For the Period Ended September 30, 2025

## THE FUND'S NET ASSETS PER SECURITY (\$)¹ (cont'd)

	Sep. 30 2025	Mar. 31 2025	Mar. 31 2024	Mar. 31 2023	Mar. 31 2022	Mar. 31 2021
<b>Series T5</b>						
Net assets, beginning of period	20.81	19.10	15.70	17.10	16.54	12.60
<b>Increase (decrease) from operations:</b>						
Total revenue	0.20	0.29	0.27	0.50	0.34	0.38
Total expenses	(0.29)	(0.55)	(0.41)	(0.39)	(0.47)	(0.42)
Realized gains (losses) for the period	1.03	0.46	1.61	(0.34)	0.75	1.50
Unrealized gains (losses) for the period	4.05	1.05	2.84	(0.11)	(0.05)	3.76
<b>Total increase (decrease) from operations²</b>	<b>4.99</b>	<b>1.25</b>	<b>4.31</b>	<b>(0.34)</b>	<b>0.57</b>	<b>5.22</b>
<b>Distributions:</b>						
From net investment income (excluding Canadian dividends)	-	-	-	(0.06)	-	-
From Canadian dividends	-	-	-	(0.02)	-	-
From capital gains	-	-	-	-	-	-
Return of capital	(0.54)	(0.91)	(0.77)	(0.88)	(0.81)	(0.78)
<b>Total annual distributions³</b>	<b>(0.54)</b>	<b>(0.91)</b>	<b>(0.77)</b>	<b>(0.96)</b>	<b>(0.81)</b>	<b>(0.78)</b>
<b>Net assets, end of period</b>	<b>24.30</b>	<b>20.81</b>	<b>19.10</b>	<b>15.70</b>	<b>17.10</b>	<b>16.54</b>
<b>Series T8</b>						
Net assets, beginning of period	17.01	16.05	13.59	15.40	15.32	12.06
<b>Increase (decrease) from operations:</b>						
Total revenue	0.17	0.23	0.23	0.44	0.31	0.35
Total expenses	(0.23)	(0.45)	(0.39)	(0.30)	(0.42)	(0.37)
Realized gains (losses) for the period	0.22	(0.98)	1.80	(0.30)	0.32	1.01
Unrealized gains (losses) for the period	3.35	0.81	2.44	(0.10)	(0.05)	3.44
<b>Total increase (decrease) from operations²</b>	<b>3.51</b>	<b>(0.39)</b>	<b>4.08</b>	<b>(0.26)</b>	<b>0.16</b>	<b>4.43</b>
<b>Distributions:</b>						
From net investment income (excluding Canadian dividends)	-	-	-	(0.07)	-	-
From Canadian dividends	-	-	-	(0.03)	-	-
From capital gains	-	-	-	-	-	-
Return of capital	(0.71)	(1.22)	(1.06)	(1.26)	(1.20)	(1.20)
<b>Total annual distributions³</b>	<b>(0.71)</b>	<b>(1.22)</b>	<b>(1.06)</b>	<b>(1.36)</b>	<b>(1.20)</b>	<b>(1.20)</b>
<b>Net assets, end of period</b>	<b>19.56</b>	<b>17.01</b>	<b>16.05</b>	<b>13.59</b>	<b>15.40</b>	<b>15.32</b>

## RATIOS AND SUPPLEMENTAL DATA

	Sep. 30 2025	Mar. 31 2025	Mar. 31 2024	Mar. 31 2023	Mar. 31 2022	Mar. 31 2021
<b>Series A</b>						
Total net asset value (\$000)¹	241,881	156,492	87,546	77,637	95,597	102,438
Securities outstanding (000)¹	8,851	6,853	4,367	4,930	5,909	6,864
Management expense ratio (%)²	2.53	2.52	2.51	2.51	2.51	2.51
Management expense ratio before waivers or absorptions (%)²	2.53	2.52	2.51	2.51	2.51	2.51
Trading expense ratio (%)³	0.08	0.10	0.14	0.11	0.11	0.26
Portfolio turnover rate (%)⁴	21.93	37.85	96.16	89.93	89.02	228.81
Net asset value per security (\$)	27.33	22.84	20.05	15.75	16.18	14.92
<b>Series AR</b>						
Total net asset value (\$000)¹	17,610	10,779	4,098	2,398	1,696	630
Securities outstanding (000)¹	878	643	278	207	143	57
Management expense ratio (%)²	2.55	2.54	2.53	2.53	2.52	2.53
Management expense ratio before waivers or absorptions (%)²	2.55	2.54	2.53	2.53	2.52	2.53
Trading expense ratio (%)³	0.08	0.10	0.14	0.11	0.11	0.26
Portfolio turnover rate (%)⁴	21.93	37.85	96.16	89.93	89.02	228.81
Net asset value per security (\$)	20.06	16.77	14.72	11.57	11.88	10.96
<b>Series D</b>						
Total net asset value (\$000)¹	19,050	15,676	13,335	7,925	281	268
Securities outstanding (000)¹	653	647	634	485	17	17
Management expense ratio (%)²	1.33	1.33	1.33	1.33	1.62	1.63
Management expense ratio before waivers or absorptions (%)²	1.33	1.33	1.33	1.33	1.62	1.63
Trading expense ratio (%)³	0.08	0.10	0.14	0.11	0.11	0.26
Portfolio turnover rate (%)⁴	21.93	37.85	96.16	89.93	89.02	228.81
Net asset value per security (\$)	29.18	24.24	21.03	16.34	16.80	15.46

- (1) This information is provided as at the end of the fiscal period shown.
- (2) Management expense ratio ("MER") is based on total expenses, excluding commissions and other portfolio transaction costs, income taxes and withholding taxes, for the stated period and is expressed as an annualized percentage of daily average net assets during the period, except as noted. In the period a series is established, the MER is annualized from the date of inception to the end of the period. Where the Fund directly invests in securities of another fund (including exchange-traded funds or "ETFs"), the MERs presented for the Fund include the portion of MERs of the other fund(s) attributable to this investment. Any income distributions received from ETFs managed by the Manager, with the intention of offsetting fees paid within those ETFs but which are not considered to be duplicative fees under regulatory requirements, are treated as waived expenses for MER purposes. The Manager may waive or absorb operating expenses at its discretion and stop waiving or absorbing such expenses at any time without notice.
- (3) The trading expense ratio ("TER") represents total commissions and other portfolio transaction costs incurred as an annualized percentage of daily average net assets during the period. Where the Fund invests in securities of another fund (including ETFs), the TERs presented for the Fund include the portion of TERs of the other fund(s) attributable to this investment.
- (4) The Fund's portfolio turnover rate indicates how actively the Fund's portfolio advisor manages its portfolio investments. A portfolio turnover rate of 100% is equivalent to the Fund buying and selling all of the securities in its portfolio once in the course of the period. The higher the Fund's portfolio turnover rate in a period, the greater the trading costs payable by the Fund in the period, and the greater the chance of an investor receiving taxable capital gains in the year. There is not necessarily a relationship between a high turnover rate and the performance of a fund. The portfolio turnover rate is not provided when the Fund is less than one year old. The value of any trades to realign the Fund's portfolio after a fund merger, if any, is excluded from the portfolio turnover rate.

# MACKENZIE GQE GLOBAL EQUITY FUND

(Formerly Mackenzie Global Equity Fund)

INTERIM MANAGEMENT REPORT OF FUND PERFORMANCE | For the Period Ended September 30, 2025

## RATIOS AND SUPPLEMENTAL DATA (cont'd)

	Sep. 30 2025	Mar. 31 2025	Mar. 31 2024	Mar. 31 2023	Mar. 31 2022	Mar. 31 2021
<b>Series F</b>						
Total net asset value (\$000) <sup>1</sup>	1,020,707	451,390	16,450	6,909	6,842	5,445
Securities outstanding (000) <sup>1</sup>	56,893	30,330	1,278	692	666	577
Management expense ratio (%) <sup>2</sup>	1.07	1.06	1.05	1.05	1.05	1.06
Management expense ratio before waivers or absorptions (%) <sup>2</sup>	1.07	1.06	1.05	1.05	1.05	1.06
Trading expense ratio (%) <sup>3</sup>	0.08	0.10	0.14	0.11	0.11	0.26
Portfolio turnover rate (%) <sup>4</sup>	21.93	37.85	96.16	89.93	89.02	228.81
Net asset value per security (\$)	17.94	14.88	12.88	9.98	10.27	9.43
<b>Series F5</b>						
Total net asset value (\$000) <sup>1</sup>	11,202	5,892	2	6	7	1
Securities outstanding (000) <sup>1</sup>	434	268	-	-	-	-
Management expense ratio (%) <sup>2</sup>	1.09	1.08	1.08	1.09	1.07	1.07
Management expense ratio before waivers or absorptions (%) <sup>2</sup>	1.09	1.08	1.09	1.09	1.07	1.07
Trading expense ratio (%) <sup>3</sup>	0.08	0.10	0.14	0.11	0.11	0.26
Portfolio turnover rate (%) <sup>4</sup>	21.93	37.85	96.16	89.93	89.02	228.81
Net asset value per security (\$)	25.82	21.95	19.85	16.10	17.54	16.87
<b>Series F8</b>						
Total net asset value (\$000) <sup>1</sup>	5,108	1,265	149	1	1	1
Securities outstanding (000) <sup>1</sup>	244	70	9	-	-	-
Management expense ratio (%) <sup>2</sup>	1.03	1.05	1.07	1.07	1.03	1.07
Management expense ratio before waivers or absorptions (%) <sup>2</sup>	1.03	1.05	1.07	1.07	1.03	1.07
Trading expense ratio (%) <sup>3</sup>	0.08	0.10	0.14	0.11	0.11	0.26
Portfolio turnover rate (%) <sup>4</sup>	21.93	37.85	96.16	89.93	89.02	228.81
Net asset value per security (\$)	20.91	18.04	16.76	13.99	15.81	15.64
<b>Series FB</b>						
Total net asset value (\$000) <sup>1</sup>	668	418	55	85	95	93
Securities outstanding (000) <sup>1</sup>	26	19	3	6	6	7
Management expense ratio (%) <sup>2</sup>	1.40	1.40	1.40	1.40	1.42	1.42
Management expense ratio before waivers or absorptions (%) <sup>2</sup>	1.40	1.40	1.41	1.41	1.42	1.42
Trading expense ratio (%) <sup>3</sup>	0.08	0.10	0.14	0.11	0.11	0.26
Portfolio turnover rate (%) <sup>4</sup>	21.93	37.85	96.16	89.93	89.02	228.81
Net asset value per security (\$)	26.11	21.69	18.83	14.64	15.06	13.85
<b>Series FB5</b>						
Total net asset value (\$000) <sup>1</sup>	2	2	2	1	1	1
Securities outstanding (000) <sup>1</sup>	-	-	-	-	-	-
Management expense ratio (%) <sup>2</sup>	1.45	1.44	1.45	1.45	1.45	1.45
Management expense ratio before waivers or absorptions (%) <sup>2</sup>	1.45	1.44	1.45	1.45	1.45	1.45
Trading expense ratio (%) <sup>3</sup>	0.08	0.10	0.14	0.11	0.11	0.26
Portfolio turnover rate (%) <sup>4</sup>	21.93	37.85	96.16	89.93	89.02	228.81
Net asset value per security (\$)	25.50	21.71	19.67	15.99	17.42	16.77

	Sep. 30 2025	Mar. 31 2025	Mar. 31 2024	Mar. 31 2023	Mar. 31 2022	Mar. 31 2021
<b>Series I</b>						
Total net asset value (\$000) <sup>1</sup>	1,023	858	1,027	784	814	804
Securities outstanding (000) <sup>1</sup>	53	53	73	71	72	77
Management expense ratio (%) <sup>2</sup>	1.76	1.76	1.76	1.76	1.75	1.75
Management expense ratio before waivers or absorptions (%) <sup>2</sup>	1.76	1.76	1.76	1.76	1.75	1.75
Trading expense ratio (%) <sup>3</sup>	0.08	0.10	0.14	0.11	0.11	0.26
Portfolio turnover rate (%) <sup>4</sup>	21.93	37.85	96.16	89.93	89.02	228.81
Net asset value per security (\$)	19.38	16.13	14.05	10.96	11.31	10.43
<b>Series IG</b>						
Total net asset value (\$000) <sup>1</sup>	1	n/a	n/a	n/a	n/a	n/a
Securities outstanding (000) <sup>1</sup>	-	n/a	n/a	n/a	n/a	n/a
Management expense ratio (%) <sup>2</sup>	-	n/a	n/a	n/a	n/a	n/a
Management expense ratio before waivers or absorptions (%) <sup>2</sup>	-	n/a	n/a	n/a	n/a	n/a
Trading expense ratio (%) <sup>3</sup>	0.08	n/a	n/a	n/a	n/a	n/a
Portfolio turnover rate (%) <sup>4</sup>	21.93	n/a	n/a	n/a	n/a	n/a
Net asset value per security (\$)	10.54	n/a	n/a	n/a	n/a	n/a
<b>Series O</b>						
Total net asset value (\$000) <sup>1</sup>	33,345	20,816	8,935	2,865	2,730	2,736
Securities outstanding (000) <sup>1</sup>	1,635	1,237	620	259	240	262
Management expense ratio (%) <sup>2</sup>	-	-	-	-	-	-
Management expense ratio before waivers or absorptions (%) <sup>2</sup>	-	-	-	-	-	-
Trading expense ratio (%) <sup>3</sup>	0.08	0.10	0.14	0.11	0.11	0.26
Portfolio turnover rate (%) <sup>4</sup>	21.93	37.85	96.16	89.93	89.02	228.81
Net asset value per security (\$)	20.40	16.83	14.41	11.07	11.40	10.44
<b>Series PW</b>						
Total net asset value (\$000) <sup>1</sup>	270,977	148,199	53,631	43,206	47,092	40,771
Securities outstanding (000) <sup>1</sup>	8,964	5,878	2,432	2,503	2,654	2,494
Management expense ratio (%) <sup>2</sup>	2.16	2.16	2.15	2.15	2.15	2.15
Management expense ratio before waivers or absorptions (%) <sup>2</sup>	2.16	2.16	2.15	2.15	2.15	2.15
Trading expense ratio (%) <sup>3</sup>	0.08	0.10	0.14	0.11	0.11	0.26
Portfolio turnover rate (%) <sup>4</sup>	21.93	37.85	96.16	89.93	89.02	228.81
Net asset value per security (\$)	30.23	25.21	22.06	17.26	17.74	16.35
<b>Series PWFB</b>						
Total net asset value (\$000) <sup>1</sup>	6,372	3,505	255	167	188	87
Securities outstanding (000) <sup>1</sup>	256	170	14	12	13	7
Management expense ratio (%) <sup>2</sup>	1.07	1.07	1.07	1.07	1.07	1.07
Management expense ratio before waivers or absorptions (%) <sup>2</sup>	1.07	1.07	1.07	1.07	1.07	1.07
Trading expense ratio (%) <sup>3</sup>	0.08	0.10	0.14	0.11	0.11	0.26
Portfolio turnover rate (%) <sup>4</sup>	21.93	37.85	96.16	89.93	89.02	228.81
Net asset value per security (\$)	24.85	20.61	17.83	13.83	14.22	13.07

# MACKENZIE GQE GLOBAL EQUITY FUND

(Formerly Mackenzie Global Equity Fund)

INTERIM MANAGEMENT REPORT OF FUND PERFORMANCE | For the Period Ended September 30, 2025

## RATIOS AND SUPPLEMENTAL DATA (cont'd)

	Sep. 30 2025	Mar. 31 2025	Mar. 31 2024	Mar. 31 2023	Mar. 31 2022	Mar. 31 2021
<b>Series PWF5</b>						
Total net asset value (\$000) <sup>1</sup>	33	2	2	1	1	1
Securities outstanding (000) <sup>1</sup>	1	-	-	-	-	-
Management expense ratio (%) <sup>2</sup>	1.08	1.07	1.07	1.07	1.03	1.07
Management expense ratio before waivers or absorptions (%) <sup>2</sup>	1.08	1.07	1.07	1.07	1.03	1.07
Trading expense ratio (%) <sup>3</sup>	0.08	0.10	0.14	0.11	0.11	0.26
Portfolio turnover rate (%) <sup>4</sup>	21.93	37.85	96.16	89.93	89.02	228.81
Net asset value per security (\$)	25.86	21.97	19.85	16.10	17.54	16.87
<b>Series PWR</b>						
Total net asset value (\$000) <sup>1</sup>	14,208	6,447	1,601	509	446	101
Securities outstanding (000) <sup>1</sup>	648	352	100	41	35	9
Management expense ratio (%) <sup>2</sup>	2.16	2.17	2.18	2.19	2.19	2.20
Management expense ratio before waivers or absorptions (%) <sup>2</sup>	2.16	2.17	2.18	2.19	2.19	2.20
Trading expense ratio (%) <sup>3</sup>	0.08	0.10	0.14	0.11	0.11	0.26
Portfolio turnover rate (%) <sup>4</sup>	21.93	37.85	96.16	89.93	89.02	228.81
Net asset value per security (\$)	21.93	18.29	16.00	12.53	12.87	11.86
<b>Series PWT5</b>						
Total net asset value (\$000) <sup>1</sup>	1,765	894	468	25	25	1
Securities outstanding (000) <sup>1</sup>	71	42	24	2	1	-
Management expense ratio (%) <sup>2</sup>	2.21	2.20	2.22	2.22	2.22	2.20
Management expense ratio before waivers or absorptions (%) <sup>2</sup>	2.21	2.20	2.22	2.22	2.22	2.20
Trading expense ratio (%) <sup>3</sup>	0.08	0.10	0.14	0.11	0.11	0.26
Portfolio turnover rate (%) <sup>4</sup>	21.93	37.85	96.16	89.93	89.02	228.81
Net asset value per security (\$)	24.69	21.12	19.31	15.85	17.26	16.66
<b>Series PWT6</b>						
Total net asset value (\$000) <sup>1</sup>	110	92	80	64	65	60
Securities outstanding (000) <sup>1</sup>	5	5	5	5	4	4
Management expense ratio (%) <sup>2</sup>	2.05	2.05	2.05	2.05	2.05	2.05
Management expense ratio before waivers or absorptions (%) <sup>2</sup>	2.05	2.05	2.05	2.05	2.05	2.05
Trading expense ratio (%) <sup>3</sup>	0.08	0.10	0.14	0.11	0.11	0.26
Portfolio turnover rate (%) <sup>4</sup>	21.93	37.85	96.16	89.93	89.02	228.81
Net asset value per security (\$)	21.30	18.29	16.86	13.93	15.35	14.95
<b>Series PWT8</b>						
Total net asset value (\$000) <sup>1</sup>	3,146	1,981	178	140	142	131
Securities outstanding (000) <sup>1</sup>	170	123	12	11	10	9
Management expense ratio (%) <sup>2</sup>	2.24	2.22	2.20	2.20	2.20	2.21
Management expense ratio before waivers or absorptions (%) <sup>2</sup>	2.24	2.22	2.21	2.21	2.20	2.21
Trading expense ratio (%) <sup>3</sup>	0.08	0.10	0.14	0.11	0.11	0.26
Portfolio turnover rate (%) <sup>4</sup>	21.93	37.85	96.16	89.93	89.02	228.81
Net asset value per security (\$)	18.56	16.12	15.16	12.79	14.44	14.34

	Sep. 30 2025	Mar. 31 2025	Mar. 31 2024	Mar. 31 2023	Mar. 31 2022	Mar. 31 2021
<b>Series PWX</b>						
Total net asset value (\$000) <sup>1</sup>	4,544	3,084	75	59	62	57
Securities outstanding (000) <sup>1</sup>	139	114	3	3	3	3
Management expense ratio (%) <sup>2</sup>	-	-	-	-	-	-
Management expense ratio before waivers or absorptions (%) <sup>2</sup>	-	-	-	-	-	-
Trading expense ratio (%) <sup>3</sup>	0.08	0.10	0.14	0.11	0.11	0.26
Portfolio turnover rate (%) <sup>4</sup>	21.93	37.85	96.16	89.93	89.02	228.81
Net asset value per security (\$)	32.81	27.07	23.17	17.79	18.33	16.79
<b>Series PWX8</b>						
Total net asset value (\$000) <sup>1</sup>	3	2	2	1	1	1
Securities outstanding (000) <sup>1</sup>	-	-	-	-	-	-
Management expense ratio (%) <sup>2</sup>	-	-	-	-	-	-
Management expense ratio before waivers or absorptions (%) <sup>2</sup>	-	-	-	-	-	-
Trading expense ratio (%) <sup>3</sup>	0.08	0.10	0.14	0.11	0.11	0.26
Portfolio turnover rate (%) <sup>4</sup>	21.93	37.85	96.16	89.93	89.02	228.81
Net asset value per security (\$)	21.73	18.66	17.14	14.17	16.02	15.81
<b>Series R</b>						
Total net asset value (\$000) <sup>1</sup>	97,069	53,626	840	1,214	1,281	1,354
Securities outstanding (000) <sup>1</sup>	1,530	1,025	19	35	36	42
Management expense ratio (%) <sup>2</sup>	-	-	-	-	-	-
Management expense ratio before waivers or absorptions (%) <sup>2</sup>	-	-	-	-	-	-
Trading expense ratio (%) <sup>3</sup>	0.08	0.10	0.14	0.11	0.11	0.26
Portfolio turnover rate (%) <sup>4</sup>	21.93	37.85	96.16	89.93	89.02	228.81
Net asset value per security (\$)	63.43	52.34	44.80	34.41	35.43	32.47
<b>Series S</b>						
Total net asset value (\$000) <sup>1</sup>	1	n/a	n/a	n/a	n/a	n/a
Securities outstanding (000) <sup>1</sup>	-	n/a	n/a	n/a	n/a	n/a
Management expense ratio (%) <sup>2</sup>	0.04	n/a	n/a	n/a	n/a	n/a
Management expense ratio before waivers or absorptions (%) <sup>2</sup>	0.04	n/a	n/a	n/a	n/a	n/a
Trading expense ratio (%) <sup>3</sup>	0.08	n/a	n/a	n/a	n/a	n/a
Portfolio turnover rate (%) <sup>4</sup>	21.93	n/a	n/a	n/a	n/a	n/a
Net asset value per security (\$)	11.14	n/a	n/a	n/a	n/a	n/a
<b>Series T5</b>						
Total net asset value (\$000) <sup>1</sup>	1,132	240	21	15	16	1
Securities outstanding (000) <sup>1</sup>	47	12	1	1	1	-
Management expense ratio (%) <sup>2</sup>	2.56	2.52	2.47	2.56	2.56	2.58
Management expense ratio before waivers or absorptions (%) <sup>2</sup>	2.56	2.52	2.47	2.57	2.56	2.58
Trading expense ratio (%) <sup>3</sup>	0.08	0.10	0.14	0.11	0.11	0.26
Portfolio turnover rate (%) <sup>4</sup>	21.93	37.85	96.16	89.93	89.02	228.81
Net asset value per security (\$)	24.30	20.81	19.10	15.70	17.10	16.54

# MACKENZIE GQE GLOBAL EQUITY FUND

(Formerly Mackenzie Global Equity Fund)

INTERIM MANAGEMENT REPORT OF FUND PERFORMANCE | For the Period Ended September 30, 2025

## RATIOS AND SUPPLEMENTAL DATA (cont'd)

Series T8	Sep. 30 2025	Mar. 31 2025	Mar. 31 2024	Mar. 31 2023	Mar. 31 2022	Mar. 31 2021
Total net asset value (\$000) <sup>1</sup>	1,177	595	30	3	3	1
Securities outstanding (000) <sup>1</sup>	60	35	2	–	–	–
Management expense ratio (%) <sup>2</sup>	2.47	2.50	2.59	2.58	2.53	2.58
Management expense ratio before waivers or absorptions (%) <sup>2</sup>	2.47	2.50	2.59	2.58	2.54	2.58
Trading expense ratio (%) <sup>3</sup>	0.08	0.10	0.14	0.11	0.11	0.26
Portfolio turnover rate (%) <sup>4</sup>	21.93	37.85	96.16	89.93	89.02	228.81
Net asset value per security (\$)	19.56	17.01	16.05	13.59	15.40	15.32

## Management Fees

The management fee for each applicable series is calculated and accrued daily as a percentage of its NAV. The Fund's management fees were used by the Manager to pay for the costs of managing the investment portfolio of the Fund and/or the underlying fund(s), as applicable, including providing investment analysis and recommendations, making investment decisions, making brokerage arrangements for the purchase and sale of the investment portfolio, and providing other services. The Manager also used the management fees to fund trailing commissions and any other compensation (collectively "distribution-related payments") to registered dealers and brokers whose clients invest in the Fund.

IG Wealth Management Inc., a dealer affiliated with the Manager, may be entitled to distribution-related payments from the Manager on the same basis as unrelated registered brokers and dealers.

The Manager used approximately 41% of the total management fee revenues received from all Mackenzie funds during the period to fund distribution-related payments to registered dealers and brokers. In comparison, such distribution-related payments for the Fund represented on average 24% of the management fees paid by all applicable series of the Fund during the period. The actual percentage for each series may be higher or lower than the average depending on the level of trailing commissions paid for that series.

# MACKENZIE GQE GLOBAL EQUITY FUND

(Formerly Mackenzie Global Equity Fund)

INTERIM MANAGEMENT REPORT OF FUND PERFORMANCE | For the Period Ended September 30, 2025

## Fund Formation and Series Information

The Fund may have undergone a number of changes, such as a reorganization or a change in manager, mandate or name. A history of the major changes affecting the Fund in the last 10 years can be found in the Fund's Simplified Prospectus.

Date of Formation: September 14, 1998

The Fund may issue an unlimited number of securities of each series. The number of issued and outstanding securities of each series is disclosed under *Financial Highlights*.

**Series Offered by Mackenzie Financial Corporation** (180 Queen Street West, Toronto, Ontario, M5V 3K1; 1-800-387-0614; [www.mackenzieinvestments.com](http://www.mackenzieinvestments.com))

Series A, Series T5 and Series T8 securities are offered to retail investors investing a minimum of \$500 (\$5,000 for Series T5 and Series T8). Investors in Series T5 and Series T8 securities also want to receive a monthly cash flow of 5% or 8% per year, respectively.

Series AR securities are offered to retail investors in a Registered Disability Savings Plan offered by Mackenzie.

Series D securities are offered to retail investors investing a minimum of \$500 through a discount brokerage or other account approved by Mackenzie.

Series F, Series F5 and Series F8 securities are offered to investors who are enrolled in a dealer-sponsored fee-for-service or wrap program, who are subject to an asset-based fee rather than commissions on each transaction and who invest at least \$500 (\$5,000 for Series F5 and Series F8); they are also available to employees of Mackenzie and its subsidiaries, and directors of Mackenzie. Investors in Series F5 and Series F8 securities also want to receive a monthly cash flow of 5% or 8% per year, respectively.

Series FB and Series FB5 securities are offered to retail investors investing a minimum of \$500. Investors are required to negotiate their advisor service fee, which cannot exceed 1.50%, with their financial advisor. Investors in Series FB5 securities also want to receive a monthly cash flow of 5% per year.

Series I securities are offered to retail investors investing a minimum of \$500 in a qualified group plan with a minimum of \$10,000,000 in assets.

Series IG securities are offered exclusively to mutual funds managed by I.G. Investment Management, Ltd.

Series O securities are offered only to investors investing a minimum of \$500,000 who are enrolled in Mackenzie Portfolio Architecture Service or Open Architecture Service; retail investors investing a minimum of \$5 million, certain institutional investors; investors in a qualified group plan, and certain qualifying employees of Mackenzie and its subsidiaries.

Series PW and Series PWT5 securities are offered through our Private Wealth Solutions to certain high net worth investors who invest a minimum of \$100,000. Investors in Series PWT5 securities also want to receive a monthly cash flow of 5% per year.

Series PWFB and Series PWFB5 securities are offered through our Private Wealth Solutions to certain high net worth investors who invest a minimum of \$100,000. Investors are required to negotiate their advisor service fee, which cannot exceed 1.50%, with their financial advisor. Investors in Series PWFB5 securities also want to receive a monthly cash flow of 5% per year.

Series PWR securities are offered through our Private Wealth Solutions to certain high net worth investors who invest a minimum of \$100,000 in a Registered Disability Savings Plan offered by Mackenzie.

Series PWX and Series PWX8 securities are offered through our Private Wealth Solutions to certain high net worth investors who invest a minimum of \$100,000. Investors are required to negotiate their advisor service fee, which cannot exceed 1.50%, with their financial advisor. Investors in Series PWX8 securities also want to receive a monthly cash flow of 8% per year.

Series R securities are offered only to other funds managed by Mackenzie on a non-prospectus basis in connection with fund-of-fund arrangements.

Series S securities are offered to The Canada Life Assurance Company and certain other mutual funds, but may be sold to other investors as determined by Mackenzie.

Series PWT6 and Series PWT8 securities were created specifically for the purpose of implementing mergers affecting the Fund and are not available for sale.

Effective June 1, 2022, an investor may purchase the Fund only under a sales charge purchase option. The sales charge under the sales charge purchase option is negotiated by the investor with their dealer. Securities purchased before June 1, 2022, under the redemption charge purchase option may continue to be held in investor accounts. Investors may switch from securities of a Mackenzie fund previously purchased under the redemption charge purchase option to securities of other Mackenzie funds, under the redemption charge purchase option, until such time as the redemption schedule has expired. For further details, please refer to the Fund's Simplified Prospectus and Fund Facts.

# MACKENZIE GQE GLOBAL EQUITY FUND

(Formerly Mackenzie Global Equity Fund)

INTERIM MANAGEMENT REPORT OF FUND PERFORMANCE | For the Period Ended September 30, 2025

## Fund Formation and Series Information (cont'd)

Series	Inception/ Reinstatement Date	Management Fee	Administration Fee
Series A	September 17, 1998	2.00%	0.28%
Series AR	May 9, 2018	2.00%	0.31%
Series D	February 12, 2014	1.00%	0.20%
Series F	December 6, 1999	0.80%	0.15%
Series F5	October 24, 2018	0.80%	0.15%
Series F8	October 24, 2018	0.80%	0.15%
Series FB	October 26, 2015	1.00%	0.28%
Series FB5	October 24, 2018	1.00%	0.28%
Series I	October 25, 1999	1.35%	0.28%
Series IG	August 25, 2025	n/a	n/a
Series O	June 28, 2000	— <sup>(1)</sup>	n/a
Series PW	October 17, 2013	1.80%	0.15%
Series PWFB	April 3, 2017	0.80%	0.15%
Series PWFB5	October 24, 2018	0.80%	0.15%
Series PWR	April 1, 2019	1.80%	0.15%
Series PWT5	October 24, 2018	1.80%	0.15%
Series PWT6	April 3, 2017	1.80%	0.15%
Series PWT8	November 25, 2016	1.80%	0.15%
Series PWX	May 13, 2014	— <sup>(2)</sup>	— <sup>(2)</sup>
Series PWX8	October 24, 2018	— <sup>(2)</sup>	— <sup>(2)</sup>
Series R	December 8, 2008	n/a	n/a
Series S	July 22, 2025	— <sup>(1)</sup>	0.03%
Series T5	October 24, 2018	2.00%	0.28%
Series T8	October 24, 2018	2.00%	0.28%

(1) This fee is negotiable and payable directly to Mackenzie by investors in this series.

(2) This fee is payable directly to Mackenzie by investors in this series through redemptions of their securities.