

MACKENZIE US HIGH YIELD BOND INDEX ETF (CAD-HEDGED)

Annual Management Report of Fund Performance

For the Year Ended March 31, 2025

This Annual Management Report of Fund Performance contains financial highlights but does not contain the complete annual financial statements of the exchange-traded fund (“ETF”). You may obtain a copy of the annual financial statements, at no cost, by calling the toll-free number 1-800-387-0614, by writing to us at Mackenzie Financial Corporation, 180 Queen Street West, Toronto, Ontario M5V 3K1, by visiting our website at www.mackenzieinvestments.com or by visiting the SEDAR+ website at www.sedarplus.ca.

Unitholders may also contact us using one of these methods to request a copy of the ETF’s interim financial report, proxy voting policies and procedures, proxy voting disclosure record or quarterly portfolio disclosure. For more information, please refer to the ETF’s Prospectus and ETF Facts, which may also be obtained, at no cost, using any of the methods outlined above.

For the ETF’s current net asset value per unit and for more recent information on general market events, please visit our website.

A NOTE ON FORWARD-LOOKING STATEMENTS

This report may contain forward-looking statements that reflect our current expectations or forecasts of future events. Forward-looking statements include statements that are predictive in nature, depend upon or refer to future events or conditions, or include words such as “expects”, “anticipates”, “intends”, “plans”, “believes”, “estimates”, “preliminary”, “typical” and other similar expressions. In addition, these statements may relate to future corporate actions, future financial performance of a fund or a security and their future investment strategies and prospects. Forward-looking statements are inherently subject to, among other things, risks, uncertainties and assumptions that could cause actual events, results, performance or prospects to differ materially from those expressed in, or implied by, these forward-looking statements. These risks, uncertainties and assumptions include, without limitation, general economic, political and market factors in North America and internationally, interest and foreign exchange rates, the volatility of global equity and capital markets, business competition, technological change, changes in government regulations, changes in securities laws and regulations, changes in tax laws, unexpected judicial or regulatory proceedings, catastrophic events, outbreaks of disease or pandemics (such as COVID-19), and the ability of Mackenzie to attract or retain key employees. The foregoing list of important risks, uncertainties and assumptions is not exhaustive. Please consider these and other factors carefully and do not place undue reliance on forward-looking statements.

The forward-looking information contained in this report is current only as of the date of this report. There should not be an expectation that such information will in all circumstances be updated, supplemented or revised whether as a result of new information, changing circumstances, future events or otherwise.

MACKENZIE US HIGH YIELD BOND INDEX ETF (CAD-HEDGED)

ANNUAL MANAGEMENT REPORT OF FUND PERFORMANCE | For the Year Ended March 31, 2025

Management Discussion of Fund Performance

June 4, 2025

This Management Discussion of Fund Performance presents the portfolio management team's view on the significant factors and developments that have affected the ETF's performance and outlook in the year ended March 31, 2025 (the "period"). If the ETF was established during the period, "period" represents the period since inception.

In this report, "Mackenzie" and "the Manager" refer to Mackenzie Financial Corporation, the manager of the ETF. In addition, net asset value ("NAV") refers to the value of the ETF as calculated for subscription and redemption purposes, on which the discussion of ETF performance is based.

Please read *A Note on Forward-Looking Statements* on the first page of this document.

Investment Objective and Strategies

The ETF seeks to replicate, to the extent reasonably possible and before fees and expenses, the performance of the Solactive USD High Yield Corporates Total Market Hedged to CAD Index, or any successor thereto. It invests primarily in high-yield corporate bonds issued in U.S. dollars, either directly or indirectly, with its foreign currency exposure hedged back to the Canadian dollar.

Risk

The risks of the ETF remain as discussed in the ETF's Prospectus.

The ETF is suitable for short- to medium-term investors looking for a currency-hedged U.S. fixed income fund to hold as part of their portfolio, who can handle the volatility of bond markets and who have a low to medium tolerance for risk.

Results of Operations

Investment Performance

During the period, the ETF returned 5.9% (after deducting fees and expenses). This compares with the Solactive USD High Yield Corporates Total Market Hedged to CAD Index return of 6.6%. All index returns are calculated on a total return basis in Canadian dollar terms. Investors cannot invest in an index without incurring fees, expenses and commissions, which are not reflected in the index returns.

In response to an uncertain economic outlook, the U.S. Federal Reserve reduced its federal funds rates three times during the period to a target range of 4.25%–4.50%. High-yield spreads (the difference in yield between high-yield and investment grade bonds) widened in response to concerns about economic growth resulting from tariff threats, faltering consumer confidence and a weakening labour market.

Through the period, the ETF used a sampling methodology to invest in derivatives that collectively approximate the full index in terms of key characteristics. Alternatively, the ETF may invest its assets directly in the bonds that make up the index, holding each bond in approximately the same proportion as its weighting in the index. The ETF uses derivative instruments to hedge its foreign currency exposure back to the Canadian dollar.

The difference in performance between the ETF and the index resulted primarily from management fees and other operating expenses.

Over the period, changes were made to the ETF's holdings to reflect changes in the composition of the index. The ETF's cash and direct bond holdings were used as collateral for swap contracts where the ETF receives the return of iShares iBoxx \$ High Yield Corporate Bond ETF or Xtrackers USD High Yield Corporate Bond ETF.

Net Assets

The ETF's net assets increased by 47.3% during the period to \$55.5 million. This change was composed primarily of \$2.2 million in net income (including any interest and/or dividend income) from investment performance, after deducting fees and expenses, and an increase of \$15.6 million due to net unitholder activity (including sales, redemptions and cash distributions).

Recent Developments

Because the ETF is an index fund, neither market expectations nor recent developments affect the composition of the portfolio.

The following changes to the Mackenzie Funds' Independent Review Committee occurred:

- effective September 13, 2023, Saijal Patel was appointed;
- effective March 5, 2024, Atul Tiwari resigned; and
- effective April 30, 2024, the terms for Robert Hines and George Hucal expired, and Rebecca Cowdry was appointed.

Related Party Transactions

Management Fees

The management expense ratio ("MER") for the ETF during the year ended March 31, 2025, was similar to the MER for the year ended March 31, 2024. Total expenses paid vary from period to period mainly as a result of changes in average assets in the ETF. The MERs are presented in the *Financial Highlights* section of this report. The ETF paid management fees to the Manager at the annual rate of 0.40%.

The management fee for the ETF is calculated and accrued daily as a percentage of its NAV. The ETF's management fees were used by the Manager to pay for the costs of managing the investment portfolio of the ETF, including providing investment analysis and recommendations, making investment decisions, making brokerage arrangements for the purchase and sale of the investment portfolio, providing other services and licensing the index, and to pay for all costs and expenses (other than certain specified fund costs as more fully described in the Prospectus) required to operate the ETF.

Other Related Party Transactions

Investment funds managed by Mackenzie and its affiliates may invest in the ETF in accordance with the investment objectives of those funds. At March 31, 2025, funds managed by Mackenzie owned 32.2% of the ETF's NAV, funds managed by Canada Life Investment Management Ltd. owned 47.7% of the ETF's NAV, and funds managed by I.G. Investment Management, Ltd. owned 9.1% of the ETF's NAV. All related party transactions are based on the current market price. As a result of these investments, the ETF may be subject to large transaction risk as discussed in the Prospectus. Mackenzie manages this risk to reduce the possibility of any adverse effects on the ETF or on its investors, through such processes as settling transactions in kind, charging creation and/or redemption fees for transactions settling in cash, and establishing appropriate order cut-off times for transactions.

The ETF did not rely on an approval, positive recommendation or standing instruction from the Mackenzie Funds' Independent Review Committee with respect to any related party transactions in the period.

MACKENZIE US HIGH YIELD BOND INDEX ETF (CAD-HEDGED)

ANNUAL MANAGEMENT REPORT OF FUND PERFORMANCE | For the Year Ended March 31, 2025

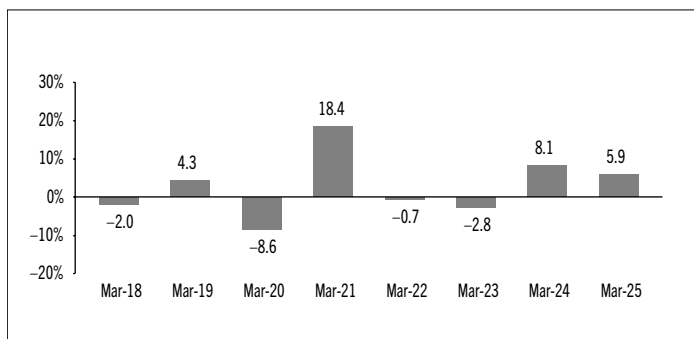
Past Performance

The ETF's performance information assumes all distributions made by the ETF in the periods presented are reinvested in additional units of the ETF. The performance information does not take into account brokerage commissions or income taxes payable by any investor that would have reduced returns or performance. The past performance of the ETF is not necessarily an indication of how it will perform in the future.

If you hold this ETF outside of a registered plan, income and capital gains distributions paid to you increase your income for tax purposes whether paid to you in cash or reinvested in additional units of the ETF. The amount of reinvested taxable distributions is added to the adjusted cost base of the units that you own. This would decrease your capital gain or increase your capital loss when you later sell from the ETF, thereby ensuring that you are not taxed on this amount again. Please consult your tax advisor regarding your personal tax situation.

Year-by-Year Returns

The following bar chart presents the performance of the ETF for each of the fiscal periods shown. The chart shows, in percentage terms, how much an investment made on the first day of each fiscal period, or on the ETF's inception date (January 24, 2018), as applicable, would have increased or decreased by the last day of the fiscal period presented.



Annual Compound Returns

The following table compares the historical annual compound total returns for the ETF with the relevant index or indices shown below for each of the periods ended March 31, 2025. Investors cannot invest in an index without incurring fees, expenses and commissions, which are not reflected in these performance figures.

All index returns are calculated in Canadian dollars on a total return basis, meaning that all dividend payments, interest income accruals and interest payments are reinvested.

Percentage Return:	1 Yr	3 Yr	5 Yr	10 Yr	Since Inception
Mackenzie US High Yield Bond Index ETF (CAD-Hedged)	5.9	3.6	5.5	n/a	2.9
Solactive USD High Yield Corporates Total Market Hedged to CAD Index	6.6	3.7	5.8	n/a	3.3

The Solactive USD High Yield Corporates Total Market Hedged to CAD Index is a rules-based, market value weighted index designed to mirror the performance of non-investment grade corporate bonds issued in U.S. dollars. The U.S. dollar exposure is hedged to the Canadian dollar.

MACKENZIE US HIGH YIELD BOND INDEX ETF (CAD-HEDGED)

ANNUAL MANAGEMENT REPORT OF FUND PERFORMANCE | For the Year Ended March 31, 2025

Summary of Investment Portfolio of the Underlying ETF* at March 31, 2025

PORTFOLIO ALLOCATION	% OF NAV
Bonds	100.0

REGIONAL ALLOCATION	% OF NAV
United States	84.9
Canada	4.8
United Kingdom	2.9
France	1.4
Israel	1.1
Macao	1.0
Other	0.9
Japan	0.8
Australia	0.6
Italy	0.6
Germany	0.6
Netherlands	0.4

SECTOR ALLOCATION	% OF NAV
Corporate bonds – Industrial	23.8
Corporate bonds – Consumer goods	17.4
Corporate bonds – Financial	11.1
Corporate bonds – Communication	8.8
Corporate bonds – Energy	7.5
Corporate bonds – Basic materials	6.9
Corporate bonds – Technology and electronics	6.0
Corporate bonds – Healthcare	5.9
Corporate bonds – Real estate	3.4
Corporate bonds – Consumer defensive	3.4
Corporate bonds – Utility	3.2
Other	2.6

BONDS BY CREDIT RATING**	% OF NAV
BBB	1.4
BB	52.8
B	33.5
Less than B	9.6
Unrated	2.7

* The ETF mainly invests in swap contracts that provide it with exposure to iShares iBoxx \$ High Yield Corporate Bond ETF. For the prospectus and other information about the Underlying ETF, visit www.sec.gov/edgar.

** Credit ratings and rating categories are based on ratings issued by a designated rating organization.

TOP 25 POSITIONS OF THE UNDERLYING ETF*	% OF NAV
Issuer	
EchoStar Corp. 10.75% 11-30-2029	0.5
Medline Borrower LP 3.875% 04-01-2029	0.4
Tibco Software Inc. 6.5% 03-31-2029	0.4
Quikrete Holdings Inc. 6.375% 03-01-2032	0.4
Cloud Software Group Inc. 9% 09-30-2029	0.4
Directv Financing LLC / Directv Financing Co-Obligor Inc. 5.875% 08-15-2027	0.3
DISH Network Corporation 11.75% 11-15-2027	0.3
HUB International Ltd. 7.25% 06-15-2030	0.3
Venture Global LNG Inc. 9.5% 02-01-2029	0.3
Teva Pharmaceutical Finance Netherlands III B.V. 3.15% 10-01-2026	0.3
CCO Holdings, LLC / CCO Holdings Capital Corp. 5.125% 05-01-2027	0.3
Truist Insurance Holdings LLC & Panther Co-Issuer Inc. 7.125% 06-01-2031	0.3
AAdvantage Loyalty IP Ltd. / American Airlines Inc. 5.75% 04-20-2029	0.3
Intelsat Jackson Holdings SA 6.5% 03-15-2030	0.3
CCO Holdings, LLC / CCO Holdings Capital Corp. 4.75% 03-01-2030	0.3
EMRLD Borrower LP / Emerald Co-Issuer Inc. 6.625% 12-15-2030	0.3
Uniti Group LP / Uniti Fiber Holdings Inc. / Uniti Group Finance 2019 Inc. / CSL Ca 02-15-2028	0.3
TransDigm, Inc. 6.375% 03-01-2029	0.2
CCO Holdings, LLC / CCO Holdings Capital Corp. 4.25% 02-01-2031	0.2
1011778 B.C. Unlimited Liability Company / New Red Finance, Inc. 4% 10-15-2030	0.2
TransDigm, Inc. 5.5% 11-15-2027	0.2
CCO Holdings, LLC / CCO Holdings Capital Corp. 4.5% 05-01-2032	0.2
Mauser Packaging Solutions Holding Co. 7.875% 04-15-2027	0.2
DISH DBS Corporation 5.25% 12-01-2026	0.2
Tenet Healthcare Corporation 6.125% 10-01-2028	0.2

Top long positions as a percentage of total net asset value	7.3
--	-----

The Underlying ETF held no short positions at the end of the period.

The investments and percentages may have changed since March 31, 2025, due to the ongoing portfolio transactions of the ETF and the Underlying ETF.

MACKENZIE US HIGH YIELD BOND INDEX ETF (CAD-HEDGED)

ANNUAL MANAGEMENT REPORT OF FUND PERFORMANCE | For the Year Ended March 31, 2025

Financial Highlights

The following tables show selected key financial information about the ETF and are intended to help you understand the ETF's financial performance for each of the fiscal periods presented below. In the period when the ETF was established, "period" represents the period from inception to the end of that fiscal period. The inception date can be found under *Past Performance*.

THE ETF'S NET ASSETS PER SECURITY (\$)¹

CAD Units (Ticker: QHY)	Mar. 31 2025	Mar. 31 2024	Mar. 31 2023	Mar. 31 2022	Mar. 31 2021
Net assets, beginning of period	85.63	83.30	88.49	94.10	83.81
Increase (decrease) from operations:					
Total revenue	4.01	4.36	4.09	5.36	5.30
Total expenses	(0.15)	(0.06)	(0.12)	(0.05)	(0.09)
Realized gains (losses) for the period	2.36	2.53	(17.63)	(3.05)	4.03
Unrealized gains (losses) for the period	(1.53)	0.10	8.96	(1.69)	3.69
Total increase (decrease) from operations²	4.69	6.93	(4.70)	0.57	12.93
Distributions:					
From net investment income (excluding Canadian dividends)	(8.78)	(4.22)	(2.29)	(5.05)	(4.76)
From Canadian dividends	-	-	-	-	-
From capital gains	-	-	-	-	-
Return of capital	-	-	-	-	-
Total annual distributions³	(8.78)	(4.22)	(2.29)	(5.05)	(4.76)
Net assets, end of period	81.59	85.63	83.30	88.49	94.10

- These calculations are prescribed by securities regulations and are not intended to be a reconciliation between opening and closing net assets per unit. This information is derived from the ETF's audited annual financial statements. The net assets per unit presented in the financial statements may differ from the net asset value per unit calculated for ETF pricing purposes. An explanation of these differences, if any, can be found in the *Notes to Financial Statements*.
- Net assets and distributions are based on the actual number of units outstanding at the relevant time. The increase/decrease from operations is based on the weighted average number of units outstanding over the fiscal period.
- Distributions were paid in cash/reinvested in additional units of the ETF, or both.

Index Provider Disclaimer

The Mackenzie US High Yield Bond Index ETF (CAD-Hedged) is not sponsored, promoted, sold or supported in any other manner by Solactive AG nor does Solactive AG offer any express or implicit guarantee or assurance either with regard to the results of using Solactive USD High Yield Corporates Total Market Hedged to CAD Index (the "Underlying Index"), including its trademark and/or prices, at any time or in any other respect. The Underlying Index is calculated and published by Solactive AG. Solactive AG uses its best efforts to ensure that the Underlying Index is calculated correctly. Irrespective of its obligations toward Mackenzie, Solactive AG has no obligation to point out errors in the Underlying Index to third parties including but not limited to investors and/or financial intermediaries of the Mackenzie US High Yield Bond Index ETF (CAD-Hedged). Neither publication of the Underlying Index by Solactive AG nor the licensing of the Underlying Index or Underlying Index trademark for the purpose of use in connection with the Mackenzie US High Yield Bond Index ETF (CAD-Hedged) constitutes a recommendation by Solactive AG to invest capital in Mackenzie US High Yield Bond Index ETF (CAD-Hedged) nor does it in any way represent an assurance or opinion of Solactive AG with regard to any investment in Mackenzie US High Yield Bond Index ETF (CAD-Hedged).

RATIOS AND SUPPLEMENTAL DATA

CAD Units (Ticker: QHY)	Mar. 31 2025	Mar. 31 2024	Mar. 31 2023	Mar. 31 2022	Mar. 31 2021
Total net asset value (\$000)¹	55,484	37,678	36,653	46,016	112,920
Units outstanding (000)¹	680	440	440	520	1,200
Management expense ratio (%)²	0.48	0.46	0.44	0.44	0.44
Management expense ratio before waivers or absorptions (%)²	0.48	0.46	0.44	0.44	0.44
Trading expense ratio (%)³	-	-	-	-	-
Trading expense ratio before reimbursements (%)³	-	-	-	-	-
Portfolio turnover rate (%)⁴	418.19	168.07	129.84	27.28	39.30
Net asset value per unit (\$)	81.59	85.63	83.30	88.49	94.10
Closing market price (\$)⁵	81.66	85.79	83.55	88.43	94.29

- This information is provided as at the end of the fiscal period shown.
- Management expense ratio ("MER") is based on total expenses, excluding commissions and other portfolio transaction costs, income taxes and withholding taxes, for the stated period and is expressed as an annualized percentage of daily average net assets during the period, except as noted. If the ETF was established in the period, the MER is annualized from the date of inception to the end of the period. Where the ETF directly invests in securities of another fund (including other ETFs), the MER presented for the ETF includes the portion of MERs of the other fund(s) attributable to this investment. Any income distributions received from ETFs managed by the Manager, with the intention of offsetting fees paid within those ETFs but which are not considered to be duplicative fees under regulatory requirements, are treated as waived expenses for MER purposes. The Manager may waive or absorb operating expenses at its discretion and stop waiving or absorbing such expenses at any time without notice.
- The trading expense ratio ("TER") represents total commissions and other portfolio transaction costs expressed as an annualized percentage of daily average net assets during the period. Where the ETF invests in securities of another fund (including other ETFs), the TER presented for the ETF includes the portion of TERs of the other fund(s) attributable to this investment. The Manager may reimburse the ETF for certain brokerage commissions and other transaction costs (including those payable to the custodian or its agents). The Manager may make these reimbursements at its discretion and stop these reimbursements at any time without notice.
- The ETF's portfolio turnover rate indicates how actively the ETF's portfolio advisor manages its portfolio investments. A portfolio turnover rate of 100% is equivalent to the ETF buying and selling all of the securities in its portfolio once in the course of the period. The higher the ETF's portfolio turnover rate in a period, the greater the trading costs payable by the ETF in the period, and the greater the chance of an investor receiving taxable capital gains in the year. There is not necessarily a relationship between a high turnover rate and the performance of the ETF. The portfolio turnover rate is not provided when the ETF is less than one year old.
- Closing market price, or the midpoint of the bid and ask prices in the absence of a closing market price, on the last trading day of the period as reported on the Toronto Stock Exchange.