

Annual Management Report of Fund Performance

For the Year Ended March 31, 2025

This Annual Management Report of Fund Performance contains financial highlights but does not contain the complete annual financial statements of the investment fund. You may obtain a copy of the annual financial statements, at no cost, by contacting us using one of the methods noted under Fund Formation and Series Information or by visiting the SEDAR+ website at www.sedarplus.ca.

Securityholders may also contact us using one of these methods to request a copy of the investment fund's interim financial report, proxy voting policies and procedures, proxy voting disclosure record or quarterly portfolio disclosure. For more information, please refer to the Fund's Simplified Prospectus and Fund Facts, which may also be obtained, at no cost, using any of the methods outlined above.

For the Fund's current net asset values per security and for more recent information on general market events, please visit our website.

A NOTE ON FORWARD-LOOKING STATEMENTS

This report may contain forward-looking statements that reflect our current expectations or forecasts of future events. Forward-looking statements include statements that are predictive in nature, depend upon or refer to future events or conditions, or include words such as "expects", "anticipates", "intends", "plans", "believes", "estimates", "preliminary", "typical" and other similar expressions. In addition, these statements may relate to future corporate actions, future financial performance of a fund or a security and their future investment strategies and prospects. Forward-looking statements are inherently subject to, among other things, risks, uncertainties and assumptions that could cause actual events, results, performance or prospects to differ materially from those expressed in, or implied by, these forward-looking statements. These risks, uncertainties and assumptions include, without limitation, general economic, political and market factors in North America and internationally, interest and foreign exchange rates, the volatility of global equity and capital markets, business competition, technological change, changes in government regulations, changes in securities laws and regulations, changes in tax laws, unexpected judicial or regulatory proceedings, catastrophic events, outbreaks of disease or pandemics (such as COVID-19), and the ability of Mackenzie to attract or retain key employees. The foregoing list of important risks, uncertainties and assumptions is not exhaustive. Please consider these and other factors carefully and do not place undue reliance on forward-looking statements.

The forward-looking information contained in this report is current only as of the date of this report. There should not be an expectation that such information will in all circumstances be updated, supplemented or revised whether as a result of new information, changing circumstances, future events or otherwise.



MACKENZIE BETTERWORLD CANADIAN EQUITY FUND

ANNUAL MANAGEMENT REPORT OF FUND PERFORMANCE | For the Year Ended March 31, 2025

Management Discussion of Fund Performance

June 4, 2025

This Management Discussion of Fund Performance presents the portfolio management team's view on the significant factors and developments that have affected the Fund's performance and outlook in the year ended March 31, 2025 (the "period"). If the Fund was established during the period, "period" represents the period since inception.

In this report, "Mackenzie" and "the Manager" refer to Mackenzie Financial Corporation, the manager of the Fund. In addition, net asset value ("NAV") refers to the value of the Fund as calculated for transaction purposes, on which the discussion of Fund performance is based.

Please read *A Note on Forward-Looking Statements* on the first page of this document.

Investment Objective and Strategies

The Fund seeks long-term growth by investing primarily in equities of Canadian companies that are considered to have progressive environmental, social and governance practices. The Fund will pursue this objective by investing in securities directly and/or by investing in other mutual funds.

Risk

The risks of the Fund remain as discussed in the Fund's Simplified Prospectus.

The Fund is suitable for long-term investors looking for a Canadian equity fund to hold as part of their portfolio, who can handle the volatility of stock markets and who have a medium tolerance for risk.

Results of Operations

Investment Performance

The performance of all series in the current and previous periods is shown in the *Past Performance* section of the report. Performance will vary by series primarily because fees and expenses differ between series, or because securities of a series were not issued and outstanding for the entire reporting period. Please refer to the *Fund Formation and Series Information* section of this report for the varying management and administration fees payable by each series. The following comparison to market indices is intended to help investors understand the Fund's performance relative to the general performance of the markets. However, the Fund's mandate may be different from that of the indices shown.

During the period, the Fund's Series A securities returned 15.2%, and Series LB securities returned 15.1% (after deducting fees and expenses paid by the series). This compares with a return of 15.8% for the Fund's broad-based index, the S&P/TSX Composite Index, and a return of 17.8% for the Fund's new narrow index, the S&P/TSX Composite Fossil Fuel Reserves Free Index. Effective October 1, 2024, the narrow index was added to more closely align with the Fund's sector exposures, although the Fund is not completely free of fossil fuel exposure. All index and series returns are calculated on a total return basis in Canadian dollar terms. Investors cannot invest in an index without incurring fees, expenses and commissions, which are not reflected in the index returns.

Canadian equities rose over the period. However, volatility increased in the first three months of 2025 because of the threat of U.S. tariffs. Rising gold prices, which ended the period at a record high, supported mining stocks, while declining interest rates helped bank stocks. The Canadian dollar weakened against the U.S. dollar in the second half of the period as the Bank of Canada reduced interest rates more sharply than the U.S. Federal Reserve. The Bank of Canada's more accommodative policy came amid a less robust Canadian economy and higher homeowner debt.

Within the S&P/TSX Composite Fossil Fuel Reserves Free Index, materials, energy and financials were the best-performing sectors, while health care, communication services and industrials were the weakest.

The Fund underperformed both the broad-based index and the new narrow index, with stock selection in the materials sector detracting from performance. Stock selection in the real estate sector also detracted from performance relative to the broad-based index. Conversely, stock selection in the consumer staples sector contributed to performance relative to both the broad-based index and the narrow index. Stock selection in the consumer discretionary sector also contributed to performance relative to the broad-based index. Given the Fund's mandate, the return of the narrow index is a more meaningful comparison.

Relative to the narrow index, lack of exposure to the energy sector also detracted from performance. Conversely, stock selection in the industrials sector contributed to performance.

Over the period, neither portfolio activity nor market developments significantly changed the positioning of the Fund.

Environmental, Social and Governance ("ESG") Impact

Engagement and stewardship are a primary part of the portfolio management team's philosophy. During the period, the team engaged with 12 companies held in the Fund, covering 47 discussion topics. For example, the team met with EQB Inc. to discuss ways to improve ethnic diversity.

EQB is a leading digital financial services company in which the Fund has been a long-time investor. The team has developed a proprietary scorecard to evaluate the performance of companies on various diversity-related metrics, and has been in an ongoing dialogue with EQB on this topic. In 2024, EQB improved its performance in relation to the seniority levels of its leadership positions in diversity, equity and inclusion; the disclosure of workforce ethnic composition, promotion and retention rates; and its supply chain diversity policy. From 2023 to 2024, EQB improved its year-over-year score by 12 points.

During the period, the team eliminated the position in The Toronto-Dominion Bank, anticipating potential reputational and financial damage to the bank with respect to failure to maintain an appropriate anti-money laundering compliance program in the United States. This assessment proved correct when TD Bank N.A. and parent company TD Bank Holding Company pleaded guilty to violations of the Bank Secrecy Act and money laundering, and the U.S. Department of Justice levied a significant fine. As a result, the team reallocated the portfolio's exposure to other Canadian banks, including a new position in National Bank of Canada.

The Fund also sold its positions in Brookfield Renewable Partners LP and Brookfield Asset Management Inc. because of their relationship to nuclear power company Westinghouse Electric Company LLC and Mackenzie's policy excluding companies involved in nuclear weapons production from sustainable investment funds. In 2023, Brookfield Renewable Partners LP, which is majority owned by Brookfield Asset Management, acquired a 51% interest in nuclear power company Westinghouse in a joint partnership. Research by the Mackenzie Sustainability team as well as Morningstar Sustainability subsequently found that Westinghouse is involved in nuclear weapons activity. Brookfield Renewable Partners and Brookfield Asset Management are considered to be involved through corporate ownership and were divested.

Based on the most recent scope 1 and 2 greenhouse gas emissions intensity data, the weighted average carbon intensity of the portfolio was 90.8 metric tons of carbon dioxide-equivalent emissions per million U.S. dollars of revenue ("tCO₂e/US\$M") at period-end.* (The Greenhouse Gas Protocol defines scope 1 as direct emissions from fuel burned in a company's owned or controlled assets and/or chemical leaks and spills, and scope 2 as indirect emissions from purchased

* ESG metrics are provided as of April 14, 2025, based on the Fund's holdings at March 31, 2025. Environmental data is from MSCI ESG Research LLC, and gender diversity data is from Bloomberg.

MACKENZIE BETTERWORLD CANADIAN EQUITY FUND

ANNUAL MANAGEMENT REPORT OF FUND PERFORMANCE | For the Year Ended March 31, 2025

electricity, cooling, heat and/or steam.) The weighted average carbon intensity of the S&P/TSX Composite Fossil Fuel Reserves Free Index, which offers a meaningful comparison, was 206.8 tCO₂e/US\$M. Additionally, 34.5% of the portfolio consisted of companies with decarbonization targets, compared to 23.3% of the index. Finally, the portfolio weight of companies with women constituting at least 30% of board membership was 95.1%, which was the same as the index.

Net Assets

The Fund's net assets increased by 38.7% during the period to \$15.5 million. This change was composed primarily of \$1.8 million in net income (including any interest and/or dividend income) from investment performance, after deducting fees and expenses, and an increase of \$2.6 million due to net securityholder activity (including sales, redemptions and cash distributions).

Fees and Expenses

The management expense ratio ("MER") for each series during the year ended March 31, 2025, was generally similar to the MER for the year ended March 31, 2024. Total expenses paid vary from period to period mainly as a result of changes in average assets in each series. The MERs for all series are presented in the *Financial Highlights* section of this report.

Recent Developments

The portfolio management team believes expectations of economic activity in Canada could be lowered as a result of slowing gross domestic product growth and trade conflicts with the United States. Against this backdrop, the team's strategy has been to curtail exposure to the automotive industry and energy sector, while moderating exposure to tariff risks by focusing on companies that offer services rather than products. While a potential recession would affect most Canadian businesses, the team believes the companies held by the Fund have resilient business models and attractive sustainability characteristics.

The following changes to the Mackenzie Funds' Independent Review Committee occurred:

- effective September 13, 2023, Saijal Patel was appointed;
- effective March 5, 2024, Atul Tiwari resigned; and
- effective April 30, 2024, the terms for Robert Hines and George Hucal expired, and Rebecca Cowdery was appointed.

Related Party Transactions

Management and Administration Services

For each applicable series, the Fund paid management fees and administration fees to the Manager at the annual rates specified under *Fund Formation and Series Information* in this report and as more fully described in the Simplified Prospectus. In return for the administration fees, the Manager pays all costs and expenses (other than certain specified fund costs) required to operate the Fund that are not included in management fees. See also *Management Fees*.

Other Related Party Transactions

Investment funds managed by Mackenzie and its affiliates may invest in the Fund. All these investments are made on a prospectus-exempt basis in accordance with the investment objectives of those funds. At March 31, 2025, funds managed by Mackenzie owned 23.2% of the Fund's NAV, and funds managed by I.G. Investment Management, Ltd. owned less than 0.1% of the Fund's NAV. All related party transactions are based on the NAV per security on each transaction day. As a result of these investments, the Fund may be subject to large transaction risk as discussed in the Fund's Simplified Prospectus. Mackenzie manages this risk to reduce the possibility of any adverse effect on the Fund or on its investors, through such processes as requiring advance notice of large redemptions.

At March 31, 2025, Mackenzie had an investment of \$0.1 million in the Fund (0.6% of the Fund's NAV).

The Fund did not rely on an approval, positive recommendation or standing instruction from the Mackenzie Funds' Independent Review Committee with respect to any related party transactions in the period.

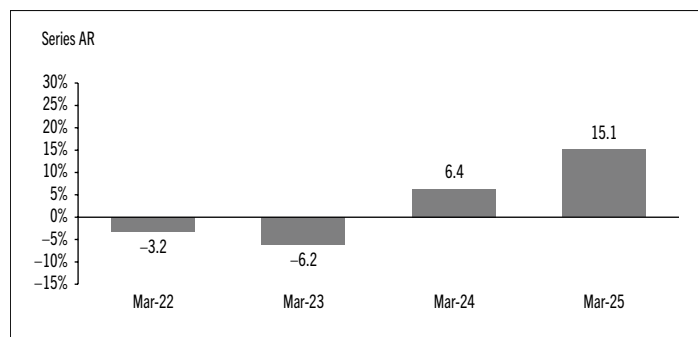
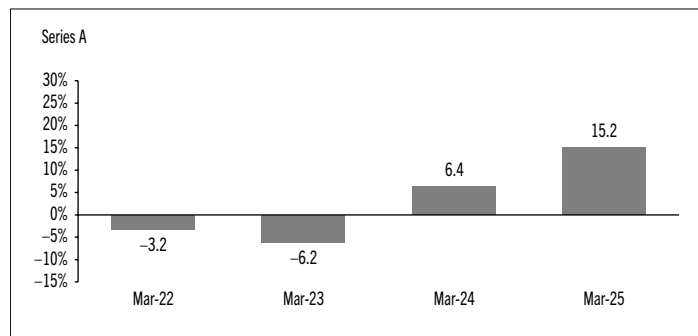
Past Performance

The Fund's performance information assumes all distributions made by the Fund in the periods presented are reinvested in additional securities of the relevant series of the Fund. The performance information does not take into account sales, redemption, distribution or other optional charges, or income taxes payable by any investor that would have reduced returns or performance. The past performance of the Fund is not necessarily an indication of how it will perform in the future.

If you hold this Fund outside of a registered plan, income and capital gains distributions paid to you increase your income for tax purposes whether paid to you in cash or reinvested in additional securities of the Fund. The amount of reinvested taxable distributions is added to the adjusted cost base of the securities that you own. This would decrease your capital gain or increase your capital loss when you later redeem from the Fund, thereby ensuring that you are not taxed on this amount again. Please consult your tax advisor regarding your personal tax situation.

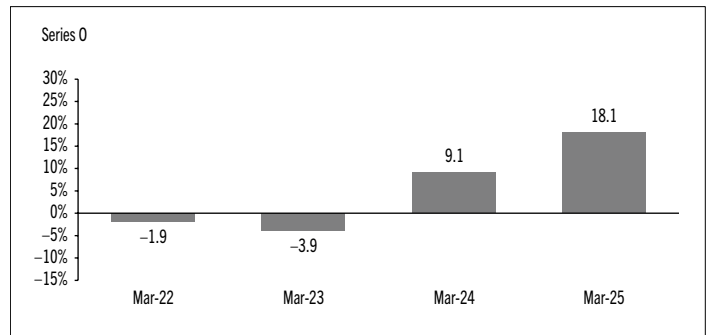
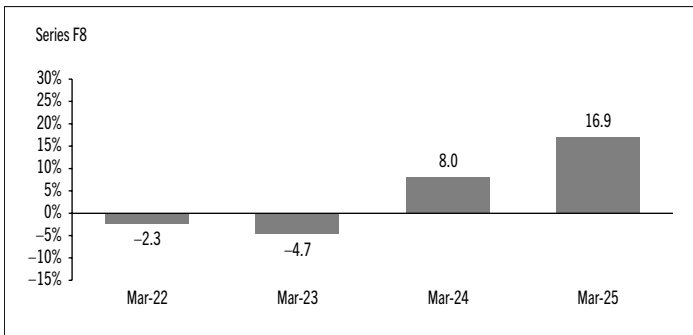
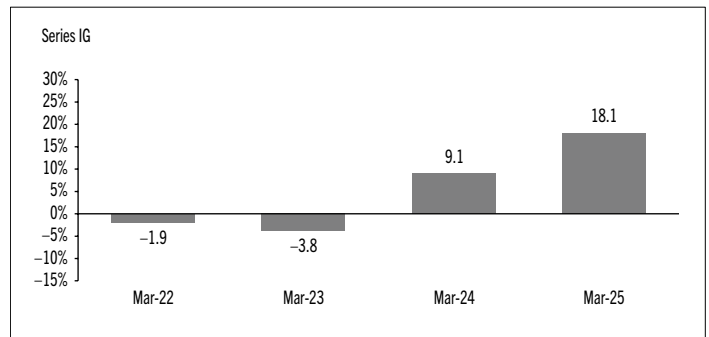
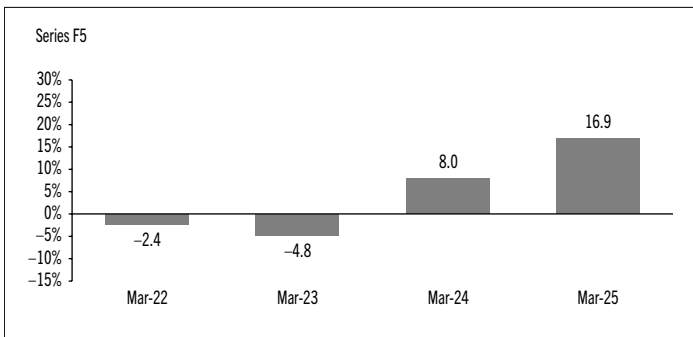
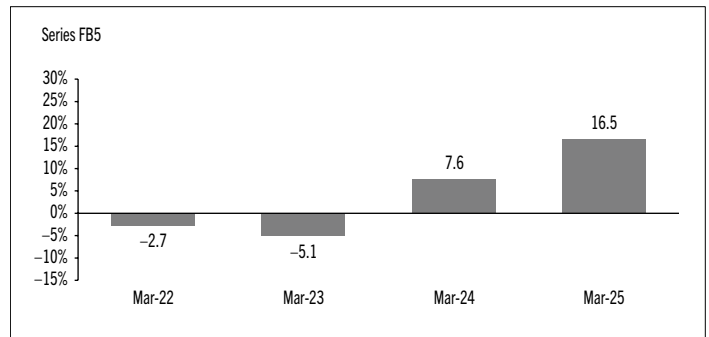
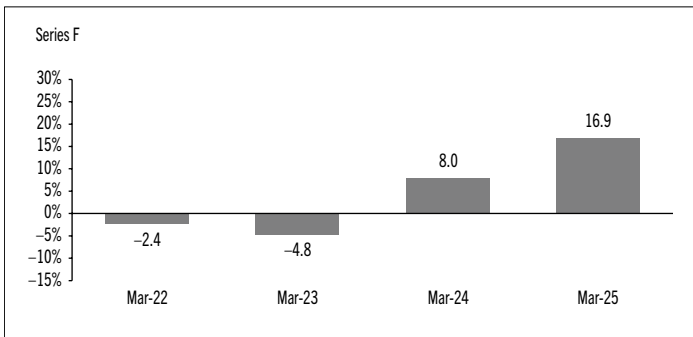
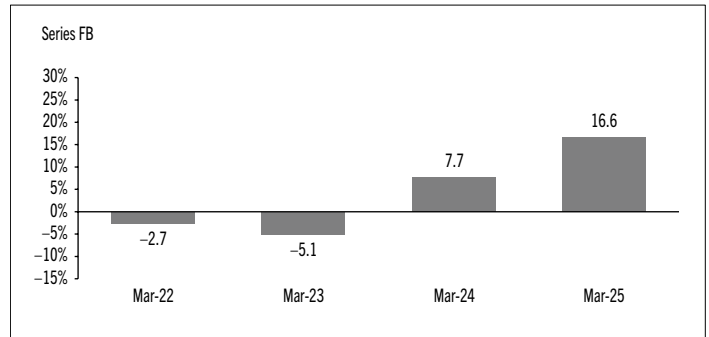
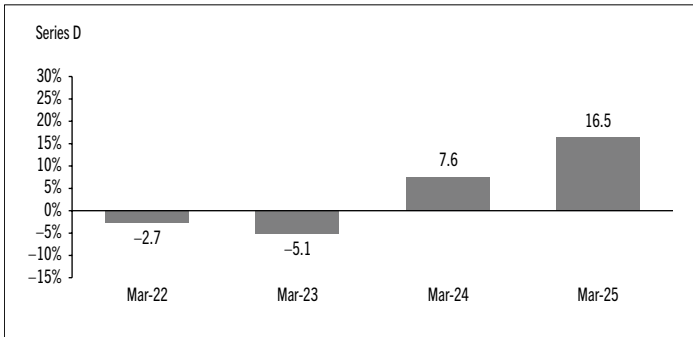
Year-by-Year Returns

The following bar charts present the performance of each series of the Fund for each of the fiscal periods shown. The charts show, in percentage terms, how much an investment made on the first day of each fiscal period, or on the series inception or reinstatement date, as applicable, would have increased or decreased by the last day of the fiscal period presented. Series inception or reinstatement dates can be found under *Fund Formation and Series Information*.



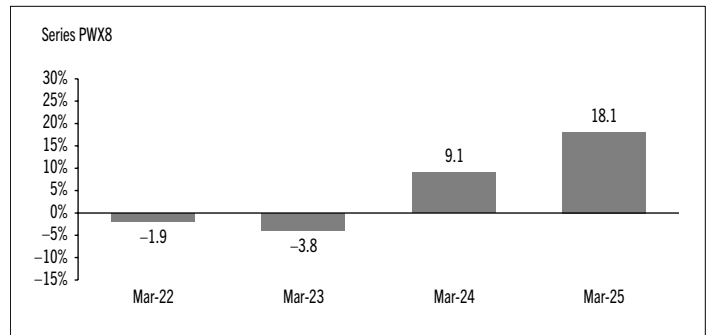
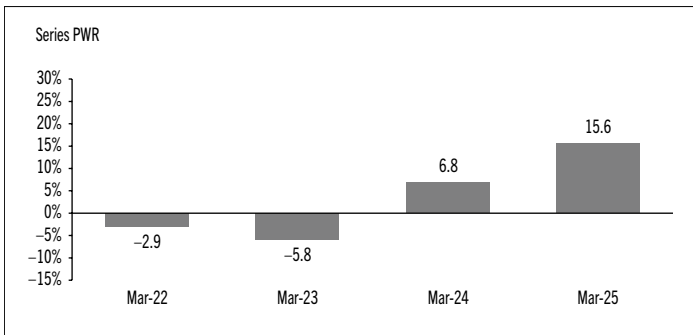
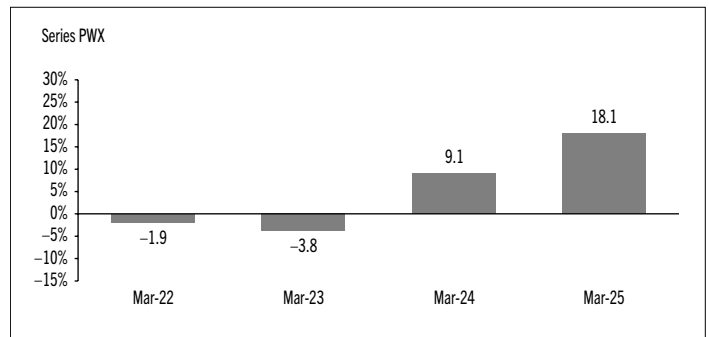
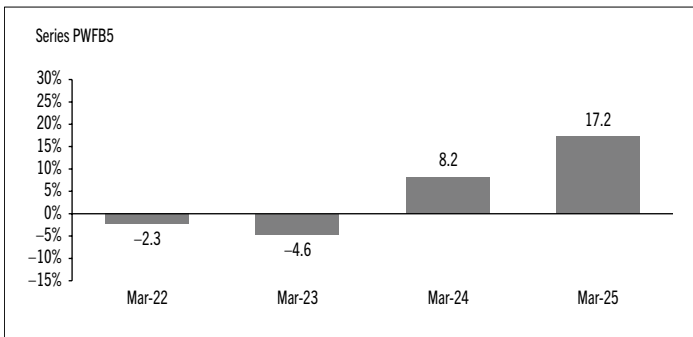
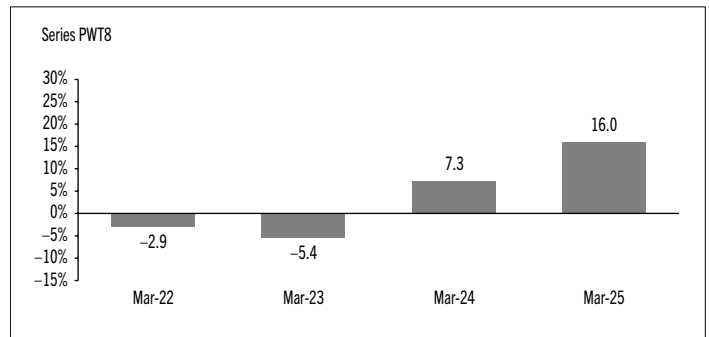
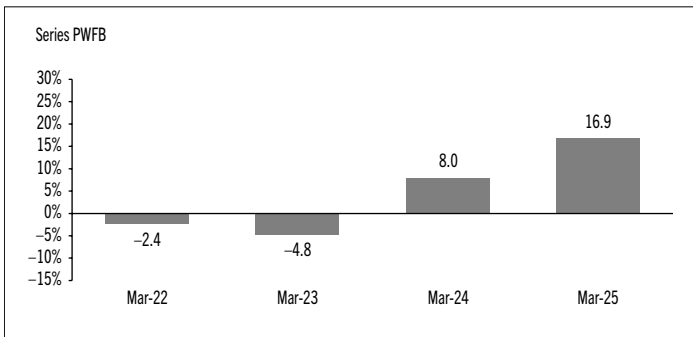
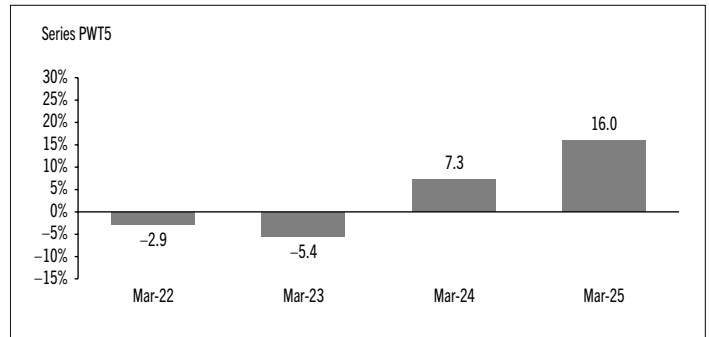
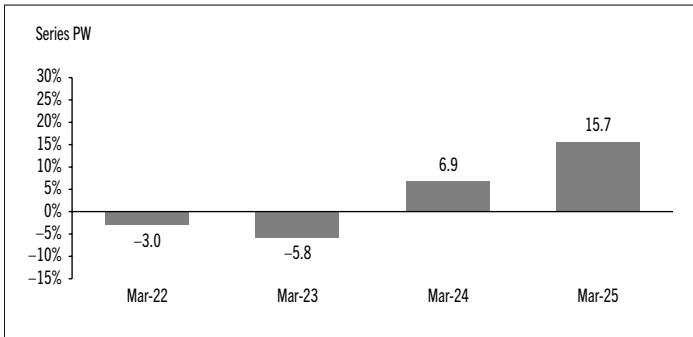
MACKENZIE BETTERWORLD CANADIAN EQUITY FUND

ANNUAL MANAGEMENT REPORT OF FUND PERFORMANCE | For the Year Ended March 31, 2025



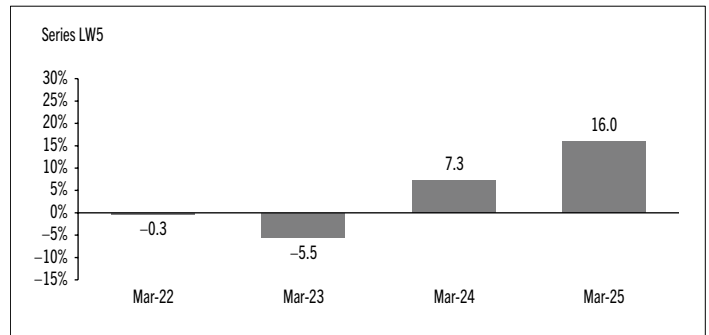
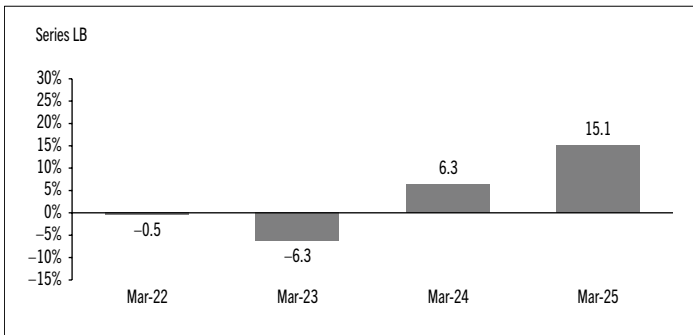
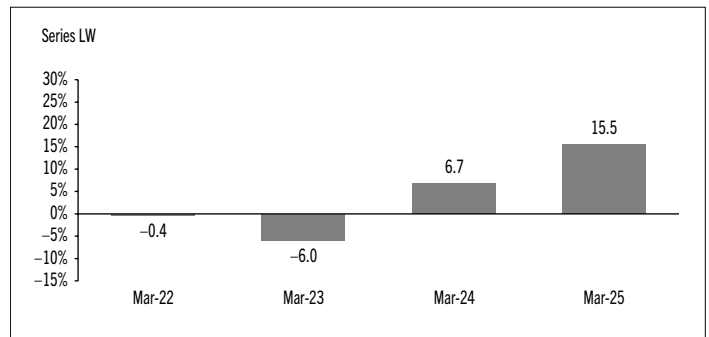
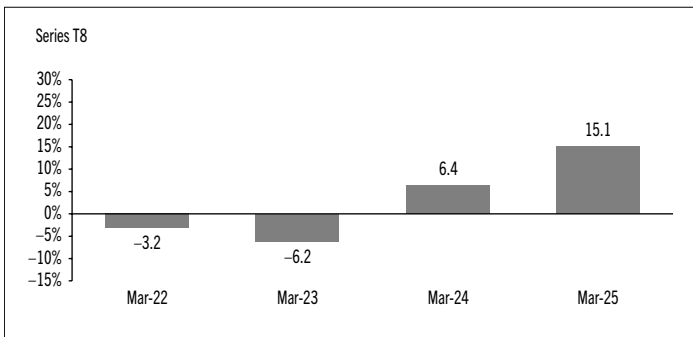
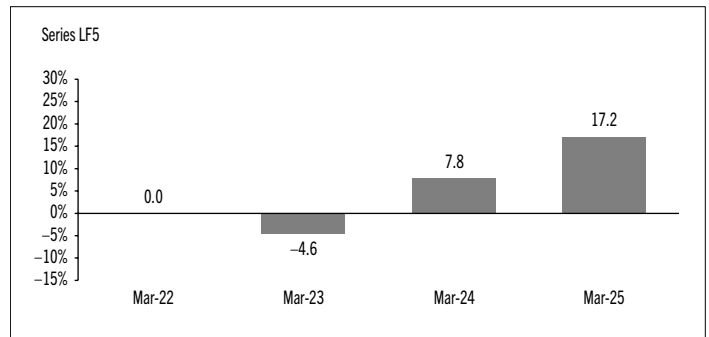
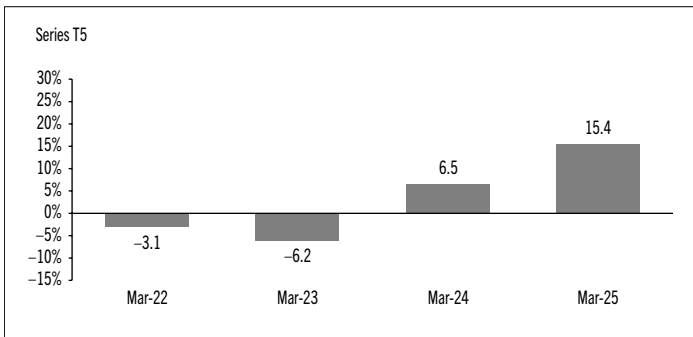
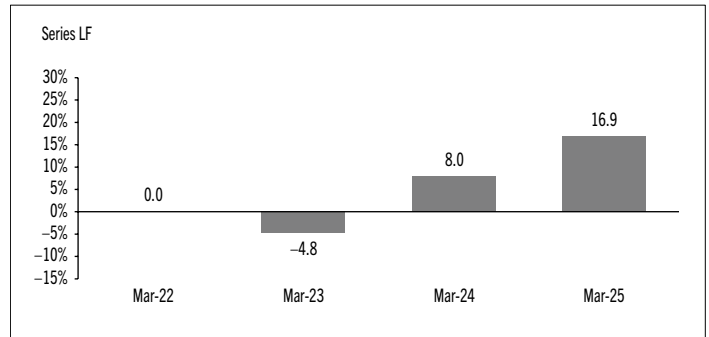
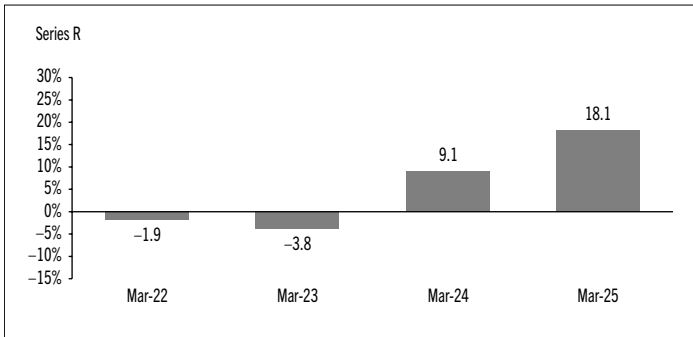
MACKENZIE BETTERWORLD CANADIAN EQUITY FUND

ANNUAL MANAGEMENT REPORT OF FUND PERFORMANCE | For the Year Ended March 31, 2025



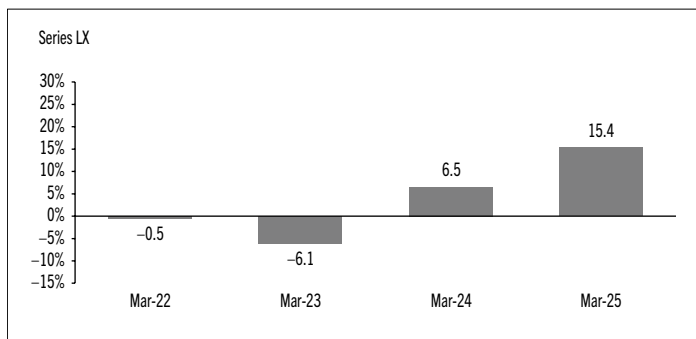
MACKENZIE BETTERWORLD CANADIAN EQUITY FUND

ANNUAL MANAGEMENT REPORT OF FUND PERFORMANCE | For the Year Ended March 31, 2025



MACKENZIE BETTERWORLD CANADIAN EQUITY FUND

ANNUAL MANAGEMENT REPORT OF FUND PERFORMANCE | For the Year Ended March 31, 2025



Annual Compound Returns

The following table compares the historical annual compound total returns for each series of the Fund with the relevant index or indices shown below for each of the periods ended March 31, 2025. Investors cannot invest in an index without incurring fees, expenses and commissions, which are not reflected in these performance figures.

All index returns are calculated in Canadian dollars on a total return basis, meaning that all dividend payments, interest income accruals and interest payments are reinvested.

Percentage Return: ¹	1 Yr	3 Yr	5 Yr	10 Yr	Since Inception ²
Series A	15.2	4.7	n/a	n/a	3.0
Series AR	15.1	4.7	n/a	n/a	3.0
Series D	16.5	5.9	n/a	n/a	4.2
Series F	16.9	6.3	n/a	n/a	4.6
Series F5	16.9	6.3	n/a	n/a	4.6
Series F8	16.9	6.3	n/a	n/a	4.6
Series FB	16.6	6.0	n/a	n/a	4.2
Series FB5	16.5	6.0	n/a	n/a	4.2
Series IG	18.1	7.4	n/a	n/a	5.6
Series O	18.1	7.4	n/a	n/a	5.6
Series PW	15.7	5.2	n/a	n/a	3.5
Series PWFB	16.9	6.3	n/a	n/a	4.6
Series PWFB5	17.2	6.6	n/a	n/a	4.8
Series PWR	15.6	5.2	n/a	n/a	3.5
Series PWT5	16.0	5.6	n/a	n/a	3.8
Series PWT8	16.0	5.6	n/a	n/a	3.8
Series PWX	18.1	7.4	n/a	n/a	5.6
Series PWX8	18.1	7.4	n/a	n/a	5.6
Series R	18.1	7.4	n/a	n/a	5.6
Series T5	15.4	4.9	n/a	n/a	3.2
Series T8	15.1	4.7	n/a	n/a	3.0
Series LB	15.1	4.7	n/a	n/a	4.1
Series LF	16.9	6.3	n/a	n/a	5.7
Series LF5	17.2	6.4	n/a	n/a	5.9
Series LW	15.5	5.1	n/a	n/a	4.5
Series LW5	16.0	5.6	n/a	n/a	5.0
Series LX	15.4	4.9	n/a	n/a	4.3
S&P/TSX Composite Index*	15.8	7.8	n/a	n/a	Note 3
S&P/TSX Composite Fossil Fuel Reserves Free Index	17.8	7.4	n/a	n/a	Note 4

* Broad-based index

The S&P/TSX Composite Index is a capitalization weighted index that represents some of the largest float adjusted stocks trading on the Toronto Stock Exchange.

The S&P/TSX Composite Fossil Fuel Reserves Free Index includes all companies in the S&P/TSX Composite Index that do not own economically and technically recoverable sources of crude oil, natural gas or thermal coal, as determined by S&P Trucost Limited. Index constituents are float adjusted and weighted by market capitalization.

- (1) The percentage return differs for each series because the management fee rate and expenses differ for each series.
- (2) The return since inception for each series will differ when the inception date differs and is only provided when a series has been active for a period of less than 10 years.
- (3) The return of the S&P/TSX Composite Index since inception for each applicable series is as follows: Series A 8.7%, Series AR 8.7%, Series D 8.7%, Series F 8.7%, Series F5 8.7%, Series F8 8.7%, Series FB 8.7%, Series FB5 8.7%, Series IG 8.7%, Series O 8.7%, Series PW 8.7%, Series PWFB 8.7%, Series PWFB5 8.7%, Series PWR 8.7%, Series PWT5 8.7%, Series PWT8 8.7%, Series PWX 8.7%, Series PWX8 8.7%, Series R 8.7%, Series T5 8.7%, Series T8 8.7%, Series LB 9.1%, Series LF 9.1%, Series LF5 9.1%, Series LW 9.1%, Series LW5 9.1%, Series LX 9.1%.
- (4) The return of the S&P/TSX Composite Fossil Fuel Reserves Free Index since inception for each applicable series is as follows: Series A 7.1%, Series AR 7.1%, Series D 7.1%, Series F 7.1%, Series F5 7.1%, Series F8 7.1%, Series FB 7.1%, Series FB5 7.1%, Series IG 7.1%, Series O 7.1%, Series PW 7.1%, Series PWFB 7.1%, Series PWFB5 7.1%, Series PWR 7.1%, Series PWT5 7.1%, Series PWT8 7.1%, Series PWX 7.1%, Series PWX8 7.1%, Series R 7.1%, Series T5 7.1%, Series T8 7.1%, Series LB 7.9%, Series LF 7.9%, Series LF5 7.9%, Series LW 7.9%, Series LW5 7.9%, Series LX 7.9%.

MACKENZIE BETTERWORLD CANADIAN EQUITY FUND

ANNUAL MANAGEMENT REPORT OF FUND PERFORMANCE | For the Year Ended March 31, 2025

Summary of Investment Portfolio at March 31, 2025

PORTFOLIO ALLOCATION	% OF NAV
Equities	96.5
Cash and cash equivalents	2.8
Other assets (liabilities)	0.7
REGIONAL ALLOCATION	
	% OF NAV
Canada	96.5
Cash and cash equivalents	2.8
Other assets (liabilities)	0.7
SECTOR ALLOCATION	
	% OF NAV
Financials	31.6
Industrials	17.3
Materials	15.0
Information technology	13.2
Consumer discretionary	5.9
Consumer staples	5.2
Cash and cash equivalents	2.8
Real estate	2.7
Health care	2.3
Communication services	2.1
Utilities	1.2
Other assets (liabilities)	0.7

TOP 25 POSITIONS

Issuer	% OF NAV
Royal Bank of Canada	7.0
Agnico-Eagle Mines Ltd.	5.2
Shopify Inc.	4.9
Brookfield Corp.	4.4
Bank of Montreal	4.4
Canadian Pacific Kansas City Ltd.	4.1
Wheaton Precious Metals Corp.	4.1
Manulife Financial Corp.	3.5
Waste Connections Inc.	3.4
Canadian Imperial Bank of Commerce	2.9
Cash and cash equivalents	2.8
Constellation Software Inc.	2.7
Intact Financial Corp.	2.6
Sun Life Financial Inc.	2.5
Dollarama Inc.	2.5
WSP Global Inc.	2.2
Teck Resources Ltd.	2.1
Loblaw Companies Ltd.	2.1
TELUS Corp.	2.1
Thomson Reuters Corp.	2.0
National Bank of Canada	2.0
AtkinsRéalis Group	1.9
Element Fleet Management Corp.	1.8
CGI Inc.	1.7
Chartwell Retirement Residences	1.6
Top long positions as a percentage of total net asset value	76.5

The Fund held no short positions at the end of the period.

The investments and percentages may have changed since March 31, 2025, due to the ongoing portfolio transactions of the Fund. Quarterly updates of holdings are available within 60 days of the end of each quarter except for March 31, the Fund's fiscal year-end, when they are available within 90 days.

MACKENZIE BETTERWORLD CANADIAN EQUITY FUND

ANNUAL MANAGEMENT REPORT OF FUND PERFORMANCE | For the Year Ended March 31, 2025

Financial Highlights

The following tables show selected key financial information about the Fund and are intended to help you understand the Fund's financial performance for each of the fiscal periods presented below. If during the period a fund or series was established or reinstated, "period" represents the period from inception or reinstatement to the end of that fiscal period. Series inception or reinstatement dates can be found under *Fund Formation and Series Information*.

THE FUND'S NET ASSETS PER SECURITY (\$)¹

	Mar. 31 2025	Mar. 31 2024	Mar. 31 2023	Mar. 31 2022
Series A				
Net assets, beginning of period	9.63	9.08	9.68	10.00
Increase (decrease) from operations:				
Total revenue	0.23	0.30	0.23	0.13
Total expenses	(0.28)	(0.24)	(0.23)	(0.15)
Realized gains (losses) for the period	0.80	(0.52)	(0.50)	(0.21)
Unrealized gains (losses) for the period	0.81	0.89	0.23	–
Total increase (decrease) from operations²	1.56	0.43	(0.27)	(0.23)
Distributions:				
From net investment income (excluding Canadian dividends)	–	–	–	–
From Canadian dividends	–	(0.02)	–	–
From capital gains	–	–	–	–
Return of capital	–	–	–	–
Total annual distributions³	–	(0.02)	–	–
Net assets, end of period	11.09	9.63	9.08	9.68
Series AR				
Net assets, beginning of period	9.62	9.07	9.68	10.00
Increase (decrease) from operations:				
Total revenue	0.23	0.30	0.22	0.12
Total expenses	(0.28)	(0.24)	(0.24)	(0.15)
Realized gains (losses) for the period	0.68	(0.21)	0.10	(0.14)
Unrealized gains (losses) for the period	0.80	0.88	0.21	–
Total increase (decrease) from operations²	1.43	0.73	0.29	(0.17)
Distributions:				
From net investment income (excluding Canadian dividends)	–	–	–	–
From Canadian dividends	–	(0.02)	–	–
From capital gains	–	–	–	–
Return of capital	–	–	–	–
Total annual distributions³	–	(0.02)	–	–
Net assets, end of period	11.08	9.62	9.07	9.68

	Mar. 31 2025	Mar. 31 2024	Mar. 31 2023	Mar. 31 2022
Series D				
Net assets, beginning of period	9.79	9.22	9.73	10.00
Increase (decrease) from operations:				
Total revenue	0.22	0.31	0.24	0.14
Total expenses	(0.16)	(0.14)	(0.14)	(0.10)
Realized gains (losses) for the period	0.20	(0.50)	(0.84)	(0.42)
Unrealized gains (losses) for the period	0.79	0.91	0.24	–
Total increase (decrease) from operations²	1.05	0.58	(0.50)	(0.38)
Distributions:				
From net investment income (excluding Canadian dividends)	–	(0.01)	–	–
From Canadian dividends	(0.01)	(0.11)	(0.01)	–
From capital gains	–	–	–	–
Return of capital	–	–	–	–
Total annual distributions³	(0.01)	(0.12)	(0.01)	–
Net assets, end of period	11.40	9.79	9.22	9.73
Series F				
Net assets, beginning of period	9.85	9.27	9.76	10.00
Increase (decrease) from operations:				
Total revenue	0.23	0.31	0.24	0.12
Total expenses	(0.12)	(0.10)	(0.11)	(0.07)
Realized gains (losses) for the period	0.55	(0.30)	(0.50)	(0.26)
Unrealized gains (losses) for the period	0.82	0.91	0.23	–
Total increase (decrease) from operations²	1.48	0.82	(0.14)	(0.21)
Distributions:				
From net investment income (excluding Canadian dividends)	–	(0.01)	–	–
From Canadian dividends	(0.03)	(0.14)	(0.02)	–
From capital gains	–	–	–	–
Return of capital	–	–	–	–
Total annual distributions³	(0.03)	(0.15)	(0.02)	–
Net assets, end of period	11.49	9.85	9.27	9.76

- These calculations are prescribed by securities regulations and are not intended to be a reconciliation between opening and closing net assets per security. This information is derived from the Fund's audited annual financial statements. The net assets per security presented in the financial statements may differ from the net asset value per security calculated for fund pricing purposes. An explanation of these differences, if any, can be found in the *Notes to Financial Statements*.
- Net assets and distributions are based on the actual number of securities outstanding at the relevant time. The increase/decrease from operations is based on the weighted average number of securities outstanding over the fiscal period.
- Distributions were paid in cash/reinvested in additional securities of the Fund, or both.

MACKENZIE BETTERWORLD CANADIAN EQUITY FUND

ANNUAL MANAGEMENT REPORT OF FUND PERFORMANCE | For the Year Ended March 31, 2025

THE FUND'S NET ASSETS PER SECURITY (\$)¹ (cont'd)

	Mar. 31 2025	Mar. 31 2024	Mar. 31 2023	Mar. 31 2022
Series F5				
Net assets, beginning of period	12.91	12.76	14.22	15.00
Increase (decrease) from operations:				
Total revenue	0.30	0.41	0.35	0.19
Total expenses	(0.16)	(0.14)	(0.15)	(0.10)
Realized gains (losses) for the period	0.93	1.51	(1.46)	(0.38)
Unrealized gains (losses) for the period	1.06	1.19	0.34	(0.01)
Total increase (decrease) from operations²	2.13	2.97	(0.92)	(0.30)
Distributions:				
From net investment income (excluding Canadian dividends)	(0.01)	(0.02)	(0.01)	–
From Canadian dividends	(0.02)	(0.18)	(0.02)	–
From capital gains	–	–	–	–
Return of capital	(0.65)	(0.61)	(0.70)	(0.43)
Total annual distributions³	(0.68)	(0.81)	(0.73)	(0.43)
Net assets, end of period	14.38	12.91	12.76	14.22
Series F8				
Net assets, beginning of period	11.88	12.13	13.97	15.00
Increase (decrease) from operations:				
Total revenue	0.27	0.39	0.27	0.18
Total expenses	(0.14)	(0.13)	(0.14)	(0.08)
Realized gains (losses) for the period	0.87	(0.65)	1.99	(0.42)
Unrealized gains (losses) for the period	0.97	1.15	0.26	(0.01)
Total increase (decrease) from operations²	1.97	0.76	2.38	(0.33)
Distributions:				
From net investment income (excluding Canadian dividends)	(0.01)	(0.02)	(0.01)	–
From Canadian dividends	(0.02)	(0.17)	(0.02)	–
From capital gains	–	–	–	–
Return of capital	(0.95)	(0.93)	(1.11)	(0.69)
Total annual distributions³	(0.98)	(1.12)	(1.14)	(0.69)
Net assets, end of period	12.86	11.88	12.13	13.97
Series FB				
Net assets, beginning of period	9.80	9.22	9.73	10.00
Increase (decrease) from operations:				
Total revenue	0.23	0.31	0.24	0.12
Total expenses	(0.15)	(0.13)	(0.13)	(0.09)
Realized gains (losses) for the period	1.19	(0.35)	(0.51)	(0.30)
Unrealized gains (losses) for the period	0.81	0.90	0.23	–
Total increase (decrease) from operations²	2.08	0.73	(0.17)	(0.27)
Distributions:				
From net investment income (excluding Canadian dividends)	–	(0.01)	–	–
From Canadian dividends	(0.01)	(0.11)	(0.01)	–
From capital gains	–	–	–	–
Return of capital	–	–	–	–
Total annual distributions³	(0.01)	(0.12)	(0.01)	–
Net assets, end of period	11.41	9.80	9.22	9.73

	Mar. 31 2025	Mar. 31 2024	Mar. 31 2023	Mar. 31 2022
Series FB5				
Net assets, beginning of period	12.83	12.69	14.17	15.00
Increase (decrease) from operations:				
Total revenue	0.30	0.41	0.34	0.18
Total expenses	(0.20)	(0.19)	(0.19)	(0.14)
Realized gains (losses) for the period	0.92	(0.49)	(1.19)	(0.43)
Unrealized gains (losses) for the period	1.05	1.21	0.34	(0.01)
Total increase (decrease) from operations²	2.07	0.94	(0.70)	(0.40)
Distributions:				
From net investment income (excluding Canadian dividends)	–	(0.01)	–	–
From Canadian dividends	(0.01)	(0.15)	(0.01)	–
From capital gains	–	–	–	–
Return of capital	(0.65)	(0.61)	(0.71)	(0.43)
Total annual distributions³	(0.66)	(0.77)	(0.72)	(0.43)
Net assets, end of period	14.26	12.83	12.69	14.17
Series IG				
Net assets, beginning of period	9.99	9.39	9.81	10.00
Increase (decrease) from operations:				
Total revenue	0.24	0.31	0.25	0.09
Total expenses	(0.01)	(0.01)	(0.02)	(0.01)
Realized gains (losses) for the period	0.74	(0.37)	(0.84)	(1.52)
Unrealized gains (losses) for the period	0.84	0.92	0.24	–
Total increase (decrease) from operations²	1.81	0.85	(0.37)	(1.44)
Distributions:				
From net investment income (excluding Canadian dividends)	(0.01)	(0.02)	(0.01)	–
From Canadian dividends	(0.06)	(0.22)	(0.03)	–
From capital gains	–	–	–	–
Return of capital	–	–	–	–
Total annual distributions³	(0.07)	(0.24)	(0.04)	–
Net assets, end of period	11.73	9.99	9.39	9.81
Series O				
Net assets, beginning of period	9.99	9.39	9.81	10.00
Increase (decrease) from operations:				
Total revenue	0.24	0.32	0.25	0.14
Total expenses	(0.01)	(0.01)	(0.02)	(0.02)
Realized gains (losses) for the period	1.43	(0.70)	(1.00)	1.85
Unrealized gains (losses) for the period	0.86	0.93	0.24	–
Total increase (decrease) from operations²	2.52	0.54	(0.53)	1.97
Distributions:				
From net investment income (excluding Canadian dividends)	(0.01)	(0.02)	(0.01)	–
From Canadian dividends	(0.06)	(0.22)	(0.03)	–
From capital gains	–	–	–	–
Return of capital	–	–	–	–
Total annual distributions³	(0.07)	(0.24)	(0.04)	–
Net assets, end of period	11.73	9.99	9.39	9.81

MACKENZIE BETTERWORLD CANADIAN EQUITY FUND

ANNUAL MANAGEMENT REPORT OF FUND PERFORMANCE | For the Year Ended March 31, 2025

THE FUND'S NET ASSETS PER SECURITY (\$)¹ (cont'd)

	Mar. 31 2025	Mar. 31 2024	Mar. 31 2023	Mar. 31 2022
Series PW				
Net assets, beginning of period	9.69	9.13	9.70	10.00
Increase (decrease) from operations:				
Total revenue	0.23	0.30	0.23	0.13
Total expenses	(0.24)	(0.20)	(0.20)	(0.13)
Realized gains (losses) for the period	0.50	(0.32)	(0.32)	(0.02)
Unrealized gains (losses) for the period	0.81	0.89	0.22	–
Total increase (decrease) from operations²	1.30	0.67	(0.07)	(0.02)
Distributions:				
From net investment income (excluding Canadian dividends)	–	(0.01)	–	–
From Canadian dividends	–	(0.05)	–	–
From capital gains	–	–	–	–
Return of capital	–	–	–	–
Total annual distributions³	–	(0.06)	–	–
Net assets, end of period	11.21	9.69	9.13	9.70
Series PWFB				
Net assets, beginning of period	9.85	9.27	9.76	10.00
Increase (decrease) from operations:				
Total revenue	0.23	0.31	0.23	0.13
Total expenses	(0.13)	(0.11)	(0.11)	(0.07)
Realized gains (losses) for the period	0.68	(0.22)	(0.47)	(0.49)
Unrealized gains (losses) for the period	0.83	0.91	0.23	–
Total increase (decrease) from operations²	1.61	0.89	(0.12)	(0.43)
Distributions:				
From net investment income (excluding Canadian dividends)	–	(0.01)	–	–
From Canadian dividends	(0.02)	(0.14)	(0.02)	–
From capital gains	–	–	–	–
Return of capital	–	–	–	–
Total annual distributions³	(0.02)	(0.15)	(0.02)	–
Net assets, end of period	11.49	9.85	9.27	9.76
Series PWFB5				
Net assets, beginning of period	12.94	12.80	14.23	15.00
Increase (decrease) from operations:				
Total revenue	0.30	0.42	0.35	0.18
Total expenses	(0.12)	(0.11)	(0.13)	(0.08)
Realized gains (losses) for the period	0.93	(0.52)	(1.20)	(0.43)
Unrealized gains (losses) for the period	1.07	1.23	0.34	(0.01)
Total increase (decrease) from operations²	2.18	1.02	(0.64)	(0.34)
Distributions:				
From net investment income (excluding Canadian dividends)	(0.01)	(0.02)	(0.01)	–
From Canadian dividends	(0.04)	(0.20)	(0.03)	–
From capital gains	–	–	–	–
Return of capital	(0.65)	(0.62)	(0.70)	(0.43)
Total annual distributions³	(0.70)	(0.84)	(0.74)	(0.43)
Net assets, end of period	14.44	12.94	12.80	14.23

	Mar. 31 2025	Mar. 31 2024	Mar. 31 2023	Mar. 31 2022
Series PWR				
Net assets, beginning of period	9.70	9.14	9.71	10.00
Increase (decrease) from operations:				
Total revenue	0.23	0.30	0.23	0.14
Total expenses	(0.24)	(0.20)	(0.20)	(0.13)
Realized gains (losses) for the period	0.35	0.11	(0.14)	0.36
Unrealized gains (losses) for the period	0.80	0.88	0.23	–
Total increase (decrease) from operations²	1.14	1.09	0.12	0.37
Distributions:				
From net investment income (excluding Canadian dividends)	–	(0.01)	–	–
From Canadian dividends	–	(0.05)	–	–
From capital gains	–	–	–	–
Return of capital	–	–	–	–
Total annual distributions³	–	(0.06)	–	–
Net assets, end of period	11.22	9.70	9.14	9.71

	Mar. 31 2025	Mar. 31 2024	Mar. 31 2023	Mar. 31 2022
Series PWT5				
Net assets, beginning of period	12.75	12.63	14.14	15.00
Increase (decrease) from operations:				
Total revenue	0.30	0.41	0.34	0.18
Total expenses	(0.26)	(0.22)	(0.23)	(0.17)
Realized gains (losses) for the period	0.91	(0.51)	(1.19)	(0.43)
Unrealized gains (losses) for the period	1.05	1.21	0.33	(0.01)
Total increase (decrease) from operations²	2.00	0.89	(0.75)	(0.43)
Distributions:				
From net investment income (excluding Canadian dividends)	–	(0.01)	–	–
From Canadian dividends	–	(0.12)	(0.01)	–
From capital gains	–	–	–	–
Return of capital	(0.64)	(0.61)	(0.70)	(0.43)
Total annual distributions³	(0.64)	(0.74)	(0.71)	(0.43)
Net assets, end of period	14.12	12.75	12.63	14.14

	Mar. 31 2025	Mar. 31 2024	Mar. 31 2023	Mar. 31 2022
Series PWT8				
Net assets, beginning of period	11.72	11.97	13.88	15.00
Increase (decrease) from operations:				
Total revenue	0.27	0.38	0.33	0.18
Total expenses	(0.24)	(0.21)	(0.22)	(0.17)
Realized gains (losses) for the period	0.83	(0.46)	(1.15)	(0.42)
Unrealized gains (losses) for the period	0.95	1.13	0.32	(0.01)
Total increase (decrease) from operations²	1.81	0.84	(0.72)	(0.42)
Distributions:				
From net investment income (excluding Canadian dividends)	–	(0.01)	–	–
From Canadian dividends	–	(0.11)	(0.01)	–
From capital gains	–	–	–	–
Return of capital	(0.95)	(0.92)	(1.10)	(0.69)
Total annual distributions³	(0.95)	(1.04)	(1.11)	(0.69)
Net assets, end of period	12.61	11.72	11.97	13.88

MACKENZIE BETTERWORLD CANADIAN EQUITY FUND

ANNUAL MANAGEMENT REPORT OF FUND PERFORMANCE | For the Year Ended March 31, 2025

THE FUND'S NET ASSETS PER SECURITY (\$)¹ (cont'd)

	Mar. 31 2025	Mar. 31 2024	Mar. 31 2023	Mar. 31 2022
Series PWX				
Net assets, beginning of period	9.99	9.39	9.81	10.00
Increase (decrease) from operations:				
Total revenue	0.14	0.31	0.25	0.12
Total expenses	(0.01)	(0.01)	(0.02)	(0.01)
Realized gains (losses) for the period	0.16	(0.38)	(0.85)	(0.30)
Unrealized gains (losses) for the period	0.49	0.92	0.24	–
Total increase (decrease) from operations²	0.78	0.84	(0.38)	(0.19)
Distributions:				
From net investment income (excluding Canadian dividends)	(0.01)	(0.02)	(0.01)	–
From Canadian dividends	(0.06)	(0.22)	(0.03)	–
From capital gains	–	–	–	–
Return of capital	–	–	–	–
Total annual distributions³	(0.07)	(0.24)	(0.04)	–
Net assets, end of period	11.74	9.99	9.39	9.81
Series PWX8				
Net assets, beginning of period	12.04	12.26	14.03	15.00
Increase (decrease) from operations:				
Total revenue	0.28	0.39	0.34	0.18
Total expenses	(0.01)	(0.01)	(0.02)	(0.02)
Realized gains (losses) for the period	0.85	(0.48)	(1.17)	(0.42)
Unrealized gains (losses) for the period	0.98	1.16	0.33	(0.01)
Total increase (decrease) from operations²	2.10	1.06	(0.52)	(0.27)
Distributions:				
From net investment income (excluding Canadian dividends)	(0.01)	(0.03)	(0.01)	–
From Canadian dividends	(0.06)	(0.27)	(0.05)	–
From capital gains	–	–	–	–
Return of capital	(0.98)	(0.94)	(1.11)	(0.69)
Total annual distributions³	(1.05)	(1.24)	(1.17)	(0.69)
Net assets, end of period	13.12	12.04	12.26	14.03
Series R				
Net assets, beginning of period	9.99	9.39	9.81	10.00
Increase (decrease) from operations:				
Total revenue	0.24	0.31	0.21	0.12
Total expenses	(0.01)	(0.01)	(0.01)	(0.01)
Realized gains (losses) for the period	0.61	(0.01)	0.51	(0.30)
Unrealized gains (losses) for the period	0.84	0.91	0.20	–
Total increase (decrease) from operations²	1.68	1.20	0.91	(0.19)
Distributions:				
From net investment income (excluding Canadian dividends)	(0.01)	(0.02)	(0.01)	–
From Canadian dividends	(0.06)	(0.22)	(0.03)	–
From capital gains	–	–	–	–
Return of capital	–	–	–	–
Total annual distributions³	(0.07)	(0.24)	(0.04)	–
Net assets, end of period	11.74	9.99	9.39	9.81

	Mar. 31 2025	Mar. 31 2024	Mar. 31 2023	Mar. 31 2022
Series T5				
Net assets, beginning of period	12.63	12.51	14.11	15.00
Increase (decrease) from operations:				
Total revenue	0.29	0.41	0.34	0.18
Total expenses	(0.33)	(0.30)	(0.33)	(0.20)
Realized gains (losses) for the period	0.91	(0.51)	(1.18)	(0.43)
Unrealized gains (losses) for the period	1.03	1.19	0.33	(0.01)
Total increase (decrease) from operations²	1.90	0.79	(0.84)	(0.46)
Distributions:				
From net investment income (excluding Canadian dividends)	–	–	–	–
From Canadian dividends	–	(0.04)	–	–
From capital gains	–	–	–	–
Return of capital	(0.64)	(0.61)	(0.70)	(0.43)
Total annual distributions³	(0.64)	(0.65)	(0.70)	(0.43)
Net assets, end of period	13.91	12.63	12.51	14.11
Series T8				
Net assets, beginning of period	11.57	11.84	13.84	15.00
Increase (decrease) from operations:				
Total revenue	0.26	0.38	0.33	0.19
Total expenses	(0.32)	(0.30)	(0.32)	(0.21)
Realized gains (losses) for the period	0.83	(0.51)	(1.33)	(0.45)
Unrealized gains (losses) for the period	0.94	1.11	0.32	(0.01)
Total increase (decrease) from operations²	1.71	0.68	(1.00)	(0.48)
Distributions:				
From net investment income (excluding Canadian dividends)	–	–	–	–
From Canadian dividends	–	(0.03)	–	–
From capital gains	–	–	–	–
Return of capital	(0.93)	(0.92)	(1.10)	(0.69)
Total annual distributions³	(0.93)	(0.95)	(1.10)	(0.69)
Net assets, end of period	12.35	11.57	11.84	13.84
Series LB				
Net assets, beginning of period	9.89	9.32	9.95	10.00
Increase (decrease) from operations:				
Total revenue	0.23	0.31	0.23	0.08
Total expenses	(0.29)	(0.25)	(0.25)	(0.08)
Realized gains (losses) for the period	0.55	(0.30)	(0.40)	0.12
Unrealized gains (losses) for the period	0.83	0.91	0.22	–
Total increase (decrease) from operations²	1.32	0.67	(0.20)	0.12
Distributions:				
From net investment income (excluding Canadian dividends)	–	–	–	–
From Canadian dividends	–	(0.02)	–	–
From capital gains	–	–	–	–
Return of capital	–	–	–	–
Total annual distributions³	–	(0.02)	–	–
Net assets, end of period	11.38	9.89	9.32	9.95

MACKENZIE BETTERWORLD CANADIAN EQUITY FUND

ANNUAL MANAGEMENT REPORT OF FUND PERFORMANCE | For the Year Ended March 31, 2025

THE FUND'S NET ASSETS PER SECURITY (\$)¹ (cont'd)

Series LF	Mar. 31 2025	Mar. 31 2024	Mar. 31 2023	Mar. 31 2022
Net assets, beginning of period	10.09	9.50	10.00	10.00
Increase (decrease) from operations:				
Total revenue	0.24	0.32	0.19	0.07
Total expenses	(0.13)	(0.11)	(0.11)	(0.03)
Realized gains (losses) for the period	0.48	(0.18)	(0.28)	0.48
Unrealized gains (losses) for the period	0.83	0.93	0.19	–
Total increase (decrease) from operations²	1.42	0.96	(0.01)	0.52
Distributions:				
From net investment income (excluding Canadian dividends)	–	(0.01)	–	–
From Canadian dividends	(0.02)	(0.14)	(0.02)	–
From capital gains	–	–	–	–
Return of capital	–	–	–	–
Total annual distributions³	(0.02)	(0.15)	(0.02)	–
Net assets, end of period	11.77	10.09	9.50	10.00
Series LF5	Mar. 31 2025	Mar. 31 2024	Mar. 31 2023	Mar. 31 2022
Net assets, beginning of period	13.45	13.32	14.81	15.00
Increase (decrease) from operations:				
Total revenue	0.31	0.46	0.28	0.10
Total expenses	(0.13)	(0.15)	(0.15)	(0.04)
Realized gains (losses) for the period	0.97	(2.10)	(1.43)	(0.05)
Unrealized gains (losses) for the period	1.11	1.34	0.27	–
Total increase (decrease) from operations²	2.26	(0.45)	(1.03)	0.01
Distributions:				
From net investment income (excluding Canadian dividends)	(0.01)	(0.02)	(0.01)	–
From Canadian dividends	(0.04)	(0.19)	(0.03)	–
From capital gains	–	–	–	–
Return of capital	(0.68)	(0.64)	(0.73)	(0.19)
Total annual distributions³	(0.73)	(0.85)	(0.77)	(0.19)
Net assets, end of period	15.00	13.45	13.32	14.81
Series LW	Mar. 31 2025	Mar. 31 2024	Mar. 31 2023	Mar. 31 2022
Net assets, beginning of period	9.94	9.37	9.96	10.00
Increase (decrease) from operations:				
Total revenue	0.23	0.31	0.22	0.07
Total expenses	(0.25)	(0.21)	(0.22)	(0.07)
Realized gains (losses) for the period	0.69	(0.20)	(0.59)	0.02
Unrealized gains (losses) for the period	0.83	0.91	0.22	–
Total increase (decrease) from operations²	1.50	0.81	(0.37)	0.02
Distributions:				
From net investment income (excluding Canadian dividends)	–	–	–	–
From Canadian dividends	–	(0.05)	–	–
From capital gains	–	–	–	–
Return of capital	–	–	–	–
Total annual distributions³	–	(0.05)	–	–
Net assets, end of period	11.49	9.94	9.37	9.96

Series LW5	Mar. 31 2025	Mar. 31 2024	Mar. 31 2023	Mar. 31 2022
Net assets, beginning of period	13.32	13.19	14.77	15.00
Increase (decrease) from operations:				
Total revenue	0.31	0.43	0.36	0.10
Total expenses	(0.28)	(0.23)	(0.25)	(0.09)
Realized gains (losses) for the period	0.96	(0.53)	(1.24)	(0.05)
Unrealized gains (losses) for the period	1.09	1.26	0.35	–
Total increase (decrease) from operations²	2.08	0.93	(0.78)	(0.04)
Distributions:				
From net investment income (excluding Canadian dividends)	–	(0.01)	–	–
From Canadian dividends	–	(0.12)	(0.01)	–
From capital gains	–	–	–	–
Return of capital	(0.67)	(0.64)	(0.73)	(0.19)
Total annual distributions³	(0.67)	(0.77)	(0.74)	(0.19)
Net assets, end of period	14.74	13.32	13.19	14.77
Series LX	Mar. 31 2025	Mar. 31 2024	Mar. 31 2023	Mar. 31 2022
Net assets, beginning of period	13.19	13.07	14.74	15.00
Increase (decrease) from operations:				
Total revenue	0.31	0.42	0.36	0.10
Total expenses	(0.35)	(0.31)	(0.34)	(0.12)
Realized gains (losses) for the period	0.94	(0.53)	(1.25)	(0.05)
Unrealized gains (losses) for the period	1.08	1.25	0.35	–
Total increase (decrease) from operations²	1.98	0.83	(0.88)	(0.07)
Distributions:				
From net investment income (excluding Canadian dividends)	–	–	–	–
From Canadian dividends	–	(0.05)	–	–
From capital gains	–	–	–	–
Return of capital	(0.67)	(0.63)	(0.73)	(0.19)
Total annual distributions³	(0.67)	(0.68)	(0.73)	(0.19)
Net assets, end of period	14.53	13.19	13.07	14.74

MACKENZIE BETTERWORLD CANADIAN EQUITY FUND

ANNUAL MANAGEMENT REPORT OF FUND PERFORMANCE | For the Year Ended March 31, 2025

RATIOS AND SUPPLEMENTAL DATA

Series A	Mar. 31 2025	Mar. 31 2024	Mar. 31 2023	Mar. 31 2022
Total net asset value (\$000) ¹	1,314	1,485	1,883	1,177
Securities outstanding (000) ¹	119	154	207	122
Management expense ratio (%) ²	2.51	2.53	2.50	2.48
Management expense ratio before waivers or absorptions (%) ²	2.51	2.53	2.50	2.48
Trading expense ratio (%) ³	0.11	0.11	0.16	0.24
Portfolio turnover rate (%) ⁴	64.66	46.32	43.11	n/a
Net asset value per security (\$)	11.09	9.63	9.08	9.68

Series AR	Mar. 31 2025	Mar. 31 2024	Mar. 31 2023	Mar. 31 2022
Total net asset value (\$000) ¹	348	263	200	18
Securities outstanding (000) ¹	31	27	22	2
Management expense ratio (%) ²	2.53	2.55	2.54	2.53
Management expense ratio before waivers or absorptions (%) ²	2.53	2.55	2.54	2.53
Trading expense ratio (%) ³	0.11	0.11	0.16	0.24
Portfolio turnover rate (%) ⁴	64.66	46.32	43.11	n/a
Net asset value per security (\$)	11.08	9.63	9.07	9.68

Series D	Mar. 31 2025	Mar. 31 2024	Mar. 31 2023	Mar. 31 2022
Total net asset value (\$000) ¹	5	1	20	21
Securities outstanding (000) ¹	–	–	2	2
Management expense ratio (%) ²	1.36	1.40	1.37	1.59
Management expense ratio before waivers or absorptions (%) ²	1.37	1.40	1.37	1.60
Trading expense ratio (%) ³	0.11	0.11	0.16	0.24
Portfolio turnover rate (%) ⁴	64.66	46.32	43.11	n/a
Net asset value per security (\$)	11.40	9.79	9.22	9.73

Series F	Mar. 31 2025	Mar. 31 2024	Mar. 31 2023	Mar. 31 2022
Total net asset value (\$000) ¹	3,251	1,967	1,333	875
Securities outstanding (000) ¹	283	200	144	90
Management expense ratio (%) ²	0.99	1.00	1.02	1.01
Management expense ratio before waivers or absorptions (%) ²	0.99	1.00	1.02	1.01
Trading expense ratio (%) ³	0.11	0.11	0.16	0.24
Portfolio turnover rate (%) ⁴	64.66	46.32	43.11	n/a
Net asset value per security (\$)	11.49	9.85	9.27	9.76

Series F5	Mar. 31 2025	Mar. 31 2024	Mar. 31 2023	Mar. 31 2022
Total net asset value (\$000) ¹	7	6	5	7
Securities outstanding (000) ¹	–	–	–	–
Management expense ratio (%) ²	1.03	1.03	1.02	0.98
Management expense ratio before waivers or absorptions (%) ²	1.05	1.05	1.02	1.00
Trading expense ratio (%) ³	0.11	0.11	0.16	0.24
Portfolio turnover rate (%) ⁴	64.66	46.32	43.11	n/a
Net asset value per security (\$)	14.38	12.91	12.76	14.22

Series F8	Mar. 31 2025	Mar. 31 2024	Mar. 31 2023	Mar. 31 2022
Total net asset value (\$000) ¹	49	49	75	1
Securities outstanding (000) ¹	4	4	6	–
Management expense ratio (%) ²	1.03	1.03	1.01	0.99
Management expense ratio before waivers or absorptions (%) ²	1.04	1.03	1.01	1.00
Trading expense ratio (%) ³	0.11	0.11	0.16	0.24
Portfolio turnover rate (%) ⁴	64.66	46.32	43.11	n/a
Net asset value per security (\$)	12.86	11.89	12.13	13.97

Series FB	Mar. 31 2025	Mar. 31 2024	Mar. 31 2023	Mar. 31 2022
Total net asset value (\$000) ¹	4	3	2	1
Securities outstanding (000) ¹	–	–	–	–
Management expense ratio (%) ²	1.32	1.37	1.37	1.33
Management expense ratio before waivers or absorptions (%) ²	1.33	1.38	1.37	1.35
Trading expense ratio (%) ³	0.11	0.11	0.16	0.24
Portfolio turnover rate (%) ⁴	64.66	46.32	43.11	n/a
Net asset value per security (\$)	11.41	9.80	9.22	9.73

Series FB5	Mar. 31 2025	Mar. 31 2024	Mar. 31 2023	Mar. 31 2022
Total net asset value (\$000) ¹	1	1	1	1
Securities outstanding (000) ¹	–	–	–	–
Management expense ratio (%) ²	1.38	1.38	1.36	1.35
Management expense ratio before waivers or absorptions (%) ²	1.39	1.39	1.38	1.37
Trading expense ratio (%) ³	0.11	0.11	0.16	0.24
Portfolio turnover rate (%) ⁴	64.66	46.32	43.11	n/a
Net asset value per security (\$)	14.26	12.83	12.69	14.17

- (1) This information is provided as at the end of the fiscal period shown.
- (2) Management expense ratio ("MER") is based on total expenses, excluding commissions and other portfolio transaction costs, income taxes and withholding taxes, for the stated period and is expressed as an annualized percentage of daily average net assets during the period, except as noted. In the period a series is established, the MER is annualized from the date of inception to the end of the period. Where the Fund directly invests in securities of another fund (including exchange-traded funds or "ETFs"), the MERs presented for the Fund include the portion of MERs of the other fund(s) attributable to this investment. Any income distributions received from ETFs managed by the Manager, with the intention of offsetting fees paid within those ETFs but which are not considered to be duplicative fees under regulatory requirements, are treated as waived expenses for MER purposes. The Manager may waive or absorb operating expenses at its discretion and stop waiving or absorbing such expenses at any time without notice.
- (3) The trading expense ratio ("TER") represents total commissions and other portfolio transaction costs incurred as an annualized percentage of daily average net assets during the period. Where the Fund invests in securities of another fund (including ETFs), the TERs presented for the Fund include the portion of TERs of the other fund(s) attributable to this investment.
- (4) The Fund's portfolio turnover rate indicates how actively the Fund's portfolio advisor manages its portfolio investments. A portfolio turnover rate of 100% is equivalent to the Fund buying and selling all of the securities in its portfolio once in the course of the period. The higher the Fund's portfolio turnover rate in a period, the greater the trading costs payable by the Fund in the period, and the greater the chance of an investor receiving taxable capital gains in the year. There is not necessarily a relationship between a high turnover rate and the performance of a fund. The portfolio turnover rate is not provided when the Fund is less than one year old. The value of any trades to realign the Fund's portfolio after a fund merger, if any, is excluded from the portfolio turnover rate.

MACKENZIE BETTERWORLD CANADIAN EQUITY FUND

ANNUAL MANAGEMENT REPORT OF FUND PERFORMANCE | For the Year Ended March 31, 2025

RATIOS AND SUPPLEMENTAL DATA (cont'd)

	Mar. 31 2025	Mar. 31 2024	Mar. 31 2023	Mar. 31 2022
Series IG				
Total net asset value (\$000) ¹	1	1	1	1
Securities outstanding (000) ¹	–	–	–	–
Management expense ratio (%) ²	–	–	–	–
Management expense ratio before waivers or absorptions (%) ²	–	–	–	–
Trading expense ratio (%) ³	0.11	0.11	0.16	0.24
Portfolio turnover rate (%) ⁴	64.66	46.32	43.11	n/a
Net asset value per security (\$)	11.73	9.99	9.39	9.81
Series O				
Total net asset value (\$000) ¹	63	91	122	83
Securities outstanding (000) ¹	5	9	13	8
Management expense ratio (%) ²	0.02	0.02	0.02	–
Management expense ratio before waivers or absorptions (%) ²	0.02	0.02	0.02	–
Trading expense ratio (%) ³	0.11	0.11	0.16	0.24
Portfolio turnover rate (%) ⁴	64.66	46.32	43.11	n/a
Net asset value per security (\$)	11.73	9.99	9.39	9.81
Series PW				
Total net asset value (\$000) ¹	2,145	2,273	2,013	839
Securities outstanding (000) ¹	191	234	220	86
Management expense ratio (%) ²	2.09	2.08	2.11	2.12
Management expense ratio before waivers or absorptions (%) ²	2.09	2.08	2.11	2.12
Trading expense ratio (%) ³	0.11	0.11	0.16	0.24
Portfolio turnover rate (%) ⁴	64.66	46.32	43.11	n/a
Net asset value per security (\$)	11.21	9.69	9.13	9.70
Series PWF5				
Total net asset value (\$000) ¹	132	83	54	29
Securities outstanding (000) ¹	11	8	6	3
Management expense ratio (%) ²	1.05	1.05	1.03	1.00
Management expense ratio before waivers or absorptions (%) ²	1.05	1.05	1.03	1.00
Trading expense ratio (%) ³	0.11	0.11	0.16	0.24
Portfolio turnover rate (%) ⁴	64.66	46.32	43.11	n/a
Net asset value per security (\$)	11.49	9.85	9.27	9.76
Series PWF55				
Total net asset value (\$000) ¹	1	1	1	1
Securities outstanding (000) ¹	–	–	–	–
Management expense ratio (%) ²	1.02	1.02	1.00	0.99
Management expense ratio before waivers or absorptions (%) ²	1.03	1.03	1.02	1.01
Trading expense ratio (%) ³	0.11	0.11	0.16	0.24
Portfolio turnover rate (%) ⁴	64.66	46.32	43.11	n/a
Net asset value per security (\$)	14.44	12.95	12.80	14.23

	Mar. 31 2025	Mar. 31 2024	Mar. 31 2023	Mar. 31 2022
Series PWR				
Total net asset value (\$000) ¹	234	97	46	28
Securities outstanding (000) ¹	21	10	5	3
Management expense ratio (%) ²	2.12	2.10	2.11	2.09
Management expense ratio before waivers or absorptions (%) ²	2.12	2.11	2.11	2.10
Trading expense ratio (%) ³	0.11	0.11	0.16	0.24
Portfolio turnover rate (%) ⁴	64.66	46.32	43.11	n/a
Net asset value per security (\$)	11.22	9.70	9.14	9.71
Series PWT5				
Total net asset value (\$000) ¹	1	1	1	1
Securities outstanding (000) ¹	–	–	–	–
Management expense ratio (%) ²	2.15	2.15	2.12	2.11
Management expense ratio before waivers or absorptions (%) ²	2.16	2.16	2.14	2.13
Trading expense ratio (%) ³	0.11	0.11	0.16	0.24
Portfolio turnover rate (%) ⁴	64.66	46.32	43.11	n/a
Net asset value per security (\$)	14.12	12.76	12.63	14.14
Series PWT8				
Total net asset value (\$000) ¹	1	1	1	1
Securities outstanding (000) ¹	–	–	–	–
Management expense ratio (%) ²	2.15	2.15	2.11	2.10
Management expense ratio before waivers or absorptions (%) ²	2.16	2.16	3.58	2.11
Trading expense ratio (%) ³	0.11	0.11	0.16	0.24
Portfolio turnover rate (%) ⁴	64.66	46.32	43.11	n/a
Net asset value per security (\$)	12.61	11.72	11.97	13.88
Series PWX				
Total net asset value (\$000) ¹	1	1	1	1
Securities outstanding (000) ¹	–	–	–	–
Management expense ratio (%) ²	–	–	–	–
Management expense ratio before waivers or absorptions (%) ²	0.02	0.02	0.02	0.02
Trading expense ratio (%) ³	0.11	0.11	0.16	0.24
Portfolio turnover rate (%) ⁴	64.66	46.32	43.11	n/a
Net asset value per security (\$)	11.74	9.99	9.39	9.81
Series PWX8				
Total net asset value (\$000) ¹	1	1	1	1
Securities outstanding (000) ¹	–	–	–	–
Management expense ratio (%) ²	–	–	–	–
Management expense ratio before waivers or absorptions (%) ²	0.02	0.02	0.02	0.02
Trading expense ratio (%) ³	0.11	0.11	0.16	0.24
Portfolio turnover rate (%) ⁴	64.66	46.32	43.11	n/a
Net asset value per security (\$)	13.12	12.04	12.26	14.03

MACKENZIE BETTERWORLD CANADIAN EQUITY FUND

ANNUAL MANAGEMENT REPORT OF FUND PERFORMANCE | For the Year Ended March 31, 2025

RATIOS AND SUPPLEMENTAL DATA (cont'd)

	Mar. 31 2025	Mar. 31 2024	Mar. 31 2023	Mar. 31 2022
Series R				
Total net asset value (\$000) ¹	3,599	1,866	784	1
Securities outstanding (000) ¹	307	187	83	-
Management expense ratio (%) ²	-	-	-	-
Management expense ratio before waivers or absorptions (%) ²	-	-	-	-
Trading expense ratio (%) ³	0.11	0.11	0.16	0.24
Portfolio turnover rate (%) ⁴	64.66	46.32	43.11	n/a
Net asset value per security (\$)	11.74	9.99	9.39	9.81
Series T5				
Total net asset value (\$000) ¹	1	1	1	1
Securities outstanding (000) ¹	-	-	-	-
Management expense ratio (%) ²	2.51	2.51	2.49	2.49
Management expense ratio before waivers or absorptions (%) ²	2.52	2.52	2.51	2.50
Trading expense ratio (%) ³	0.11	0.11	0.16	0.24
Portfolio turnover rate (%) ⁴	64.66	46.32	43.11	n/a
Net asset value per security (\$)	13.91	12.63	12.51	14.11
Series T8				
Total net asset value (\$000) ¹	19	17	18	58
Securities outstanding (000) ¹	2	2	1	4
Management expense ratio (%) ²	2.53	2.54	2.53	2.47
Management expense ratio before waivers or absorptions (%) ²	2.53	2.54	3.98	2.48
Trading expense ratio (%) ³	0.11	0.11	0.16	0.24
Portfolio turnover rate (%) ⁴	64.66	46.32	43.11	n/a
Net asset value per security (\$)	12.35	11.58	11.84	13.84
Series LB				
Total net asset value (\$000) ¹	514	390	247	79
Securities outstanding (000) ¹	45	39	26	8
Management expense ratio (%) ²	2.57	2.57	2.60	2.55
Management expense ratio before waivers or absorptions (%) ²	2.57	2.57	2.71	2.55
Trading expense ratio (%) ³	0.11	0.11	0.16	0.24
Portfolio turnover rate (%) ⁴	64.66	46.32	43.11	n/a
Net asset value per security (\$)	11.38	9.89	9.32	9.95
Series LF				
Total net asset value (\$000) ¹	746	341	179	4
Securities outstanding (000) ¹	63	34	19	-
Management expense ratio (%) ²	1.05	1.05	1.06	1.03
Management expense ratio before waivers or absorptions (%) ²	1.05	1.05	1.12	1.03
Trading expense ratio (%) ³	0.11	0.11	0.16	0.24
Portfolio turnover rate (%) ⁴	64.66	46.32	43.11	n/a
Net asset value per security (\$)	11.77	10.09	9.50	10.00

	Mar. 31 2025	Mar. 31 2024	Mar. 31 2023	Mar. 31 2022
Series LF5				
Total net asset value (\$000) ¹	1	1	51	1
Securities outstanding (000) ¹	-	-	4	-
Management expense ratio (%) ²	1.02	1.02	1.03	1.03
Management expense ratio before waivers or absorptions (%) ²	1.03	1.05	1.07	1.03
Trading expense ratio (%) ³	0.11	0.11	0.16	0.24
Portfolio turnover rate (%) ⁴	64.66	46.32	43.11	n/a
Net asset value per security (\$)	15.00	13.45	13.32	14.81
Series LW				
Total net asset value (\$000) ¹	3,056	2,230	1,185	151
Securities outstanding (000) ¹	266	224	127	15
Management expense ratio (%) ²	2.20	2.21	2.22	2.18
Management expense ratio before waivers or absorptions (%) ²	2.20	2.21	2.32	2.18
Trading expense ratio (%) ³	0.11	0.11	0.16	0.24
Portfolio turnover rate (%) ⁴	64.66	46.32	43.11	n/a
Net asset value per security (\$)	11.49	9.94	9.37	9.96
Series LW5				
Total net asset value (\$000) ¹	1	1	1	1
Securities outstanding (000) ¹	-	-	-	-
Management expense ratio (%) ²	2.14	2.15	2.17	2.18
Management expense ratio before waivers or absorptions (%) ²	2.16	2.17	2.36	2.18
Trading expense ratio (%) ³	0.11	0.11	0.16	0.24
Portfolio turnover rate (%) ⁴	64.66	46.32	43.11	n/a
Net asset value per security (\$)	14.74	13.32	13.19	14.77
Series LX				
Total net asset value (\$000) ¹	1	1	1	1
Securities outstanding (000) ¹	-	-	-	-
Management expense ratio (%) ²	2.51	2.51	2.54	2.55
Management expense ratio before waivers or absorptions (%) ²	2.52	2.53	2.73	2.55
Trading expense ratio (%) ³	0.11	0.11	0.16	0.24
Portfolio turnover rate (%) ⁴	64.66	46.32	43.11	n/a
Net asset value per security (\$)	14.53	13.20	13.07	14.74

MACKENZIE BETTERWORLD CANADIAN EQUITY FUND

ANNUAL MANAGEMENT REPORT OF FUND PERFORMANCE | For the Year Ended March 31, 2025

Management Fees

The management fee for each applicable series is calculated and accrued daily as a percentage of its NAV. The Fund's management fees were used by the Manager to pay for the costs of managing the investment portfolio of the Fund and/or the underlying fund(s), as applicable, including providing investment analysis and recommendations, making investment decisions, making brokerage arrangements for the purchase and sale of the investment portfolio, and providing other services. The Manager also used the management fees to fund sales commissions, trailing commissions and any other compensation (collectively "distribution-related payments") to registered dealers and brokers whose clients invest in the Fund.

LBC Financial Services Inc. ("LBC") is the principal distributor for the LBC series securities of the Fund (as listed under *Fund Formation and Series Information*) and receives a portion of the management fees that the Fund pays to the Manager. Under this arrangement, LBC was entitled to approximately 25% of the total management fees that the Manager received from the LBC series of all Mackenzie funds during the period. The Manager is responsible for paying all distribution-related payments to LBC-authorized dealers whose clients invest in the LBC series of the Fund.

The following dealers affiliated with the Manager may be entitled to distribution-related payments from the Manager on the same basis as unrelated registered brokers and dealers: Investors Group Securities Inc. and Investors Group Financial Services Inc.

The Manager used approximately 42% of the total management fee revenues received from all Mackenzie funds during the period to fund distribution-related payments to registered dealers and brokers. In comparison, such distribution-related payments for the Fund represented on average 36% of the management fees paid by all applicable series of the Fund during the period. The actual percentage for each series may be higher or lower than the average depending on the level of trailing commissions paid for that series.

MACKENZIE BETTERWORLD CANADIAN EQUITY FUND

ANNUAL MANAGEMENT REPORT OF FUND PERFORMANCE | For the Year Ended March 31, 2025

Fund Formation and Series Information

The Fund may have undergone a number of changes, such as a reorganization or a change in manager, mandate or name. A history of the major changes affecting the Fund in the last 10 years can be found in the Fund's Simplified Prospectus.

Date of Formation: July 12, 2021

The Fund may issue an unlimited number of securities of each series. The number of issued and outstanding securities of each series is disclosed under *Financial Highlights*.

Series Offered by Mackenzie Financial Corporation (180 Queen Street West, Toronto, Ontario, M5V 3K1; 1-800-387-0614; www.mackenzieinvestments.com)

Series A, Series T5 and Series T8 securities are offered to retail investors investing a minimum of \$500 (\$5,000 for Series T5 and Series T8). Investors in Series T5 and Series T8 securities also want to receive a monthly cash flow of 5% or 8% per year, respectively.

Series AR securities are offered to retail investors in a Registered Disability Savings Plan offered by Mackenzie.

Series D securities are offered to retail investors investing a minimum of \$500 through a discount brokerage or other account approved by Mackenzie.

Series F, Series F5 and Series F8 securities are offered to investors who are enrolled in a dealer-sponsored fee-for-service or wrap program, who are subject to an asset-based fee rather than commissions on each transaction and who invest at least \$500 (\$5,000 for Series F5 and Series F8); they are also available to employees of Mackenzie and its subsidiaries, and directors of Mackenzie. Investors in Series F5 and Series F8 securities also want to receive a monthly cash flow of 5% or 8% per year, respectively.

Series FB and Series FB5 securities are offered to retail investors investing a minimum of \$500. Investors are required to negotiate their advisor service fee, which cannot exceed 1.50%, with their financial advisor. Investors in Series FB5 securities also want to receive a monthly cash flow of 5% per year.

Series IG securities are offered exclusively to mutual funds managed by I.G. Investment Management, Ltd.

Series O securities are offered only to investors investing a minimum of \$500,000 who are enrolled in Mackenzie Portfolio Architecture Service or Open Architecture Service; retail investors investing a minimum of \$5 million, certain institutional investors; investors in a qualified group plan, and certain qualifying employees of Mackenzie and its subsidiaries.

Series PW, Series PWT5 and Series PWT8 securities are offered through our Private Wealth Solutions to certain high net worth investors who invest a minimum of \$100,000. Investors in Series PWT5 and Series PWT8 securities also want to receive a monthly cash flow of 5% or 8% per year, respectively.

Series PWFB and Series PWFB5 securities are offered through our Private Wealth Solutions to certain high net worth investors who invest a minimum of \$100,000. Investors are required to negotiate their advisor service fee, which cannot exceed 1.50%, with their financial advisor. Investors in Series PWFB5 securities also want to receive a monthly cash flow of 5% per year.

Series PWR securities are offered through our Private Wealth Solutions to certain high net worth investors who invest a minimum of \$100,000 in a Registered Disability Savings Plan offered by Mackenzie.

Series PWX and Series PWX8 securities are offered through our Private Wealth Solutions to certain high net worth investors who invest a minimum of \$100,000. Investors are required to negotiate their advisor service fee, which cannot exceed 1.50%, with their financial advisor. Investors in Series PWX8 securities also want to receive a monthly cash flow of 8% per year.

Series R securities are offered only to other funds managed by Mackenzie on a non-prospectus basis in connection with fund-of-fund arrangements.

Series Distributed by LBC Financial Services Inc. (1360 René-Lévesque Blvd. West, 13th Floor, Montréal, Québec H3G 0A9; 1-800-522-1846; www.laurentianbank.ca/mackenzie)

Series LB and Series LX securities are offered to retail investors investing a minimum of \$500 (\$5,000 for Series LX). Investors in Series LX securities also want to receive a monthly cash flow of 5% per year.

Series LF and Series LF5 securities are offered to retail investors investing a minimum of \$500 (\$5,000 for Series LF5), who are enrolled in the LBC Private Banking sponsored fee-for-service program. Investors in Series LF5 securities also want to receive a monthly cash flow of 5% per year.

Series LW and Series LW5 securities are offered through our Preferred Pricing Program to certain high net worth investors who invest a minimum of \$100,000. Investors in Series LW5 securities also want to receive a monthly cash flow of 5% per year.

Effective June 1, 2022, an investor may purchase the Fund under a sales charge purchase option and a no-load purchase option. Not all purchase options are available under each series of the Fund. The sales charge under the sales charge purchase option is negotiated by the investor with their dealer. Securities purchased before June 1, 2022, under the redemption charge purchase option and low-load 3 purchase option (collectively the "deferred sales charge purchase options") may continue to be held in investor accounts. Investors may switch from securities of a Mackenzie fund previously purchased under these deferred sales charge purchase options to securities of other Mackenzie funds, under the same purchase option, until such time as the redemption schedule has expired. For further details, please refer to the Fund's Simplified Prospectus and Fund Facts.

MACKENZIE BETTERWORLD CANADIAN EQUITY FUND

ANNUAL MANAGEMENT REPORT OF FUND PERFORMANCE | For the Year Ended March 31, 2025

Fund Formation and Series Information (cont'd)

Series	Inception/ Reinstatement Date	Management Fee	Administration Fee
Series A	September 9, 2021	2.00%	0.22%
Series AR	September 9, 2021	2.00%	0.27%
Series D	September 9, 2021	1.00%	0.19%
Series F	September 9, 2021	0.75%	0.15%
Series F5	September 9, 2021	0.75%	0.15%
Series F8	September 9, 2021	0.75%	0.15%
Series FB	September 9, 2021	1.00%	0.22%
Series FB5	September 9, 2021	1.00%	0.22%
Series IG	September 9, 2021	n/a	n/a
Series O	September 9, 2021	— ⁽¹⁾	n/a
Series PW	September 9, 2021	1.75%	0.15%
Series PWFB	September 9, 2021	0.75%	0.15%
Series PWFB5	September 9, 2021	0.75%	0.15%
Series PWR	September 9, 2021	1.75%	0.15%
Series PWT5	September 9, 2021	1.75%	0.15%
Series PWT8	September 9, 2021	1.75%	0.15%
Series PWX	September 9, 2021	— ⁽²⁾	— ⁽²⁾
Series PWX8	September 9, 2021	— ⁽²⁾	— ⁽²⁾
Series R	September 9, 2021	n/a	n/a
Series T5	September 9, 2021	2.00%	0.22%
Series T8	September 9, 2021	2.00%	0.22%
Series LB	December 16, 2021	2.00%	0.22%
Series LF	December 16, 2021	0.75%	0.15%
Series LF5	December 16, 2021	0.75%	0.15%
Series LW	December 16, 2021	1.75%	0.15%
Series LW5	December 16, 2021	1.75%	0.15%
Series LX	December 16, 2021	2.00%	0.22%

(1) This fee is negotiable and payable directly to Mackenzie by investors in this series.

(2) This fee is payable directly to Mackenzie by investors in this series through redemptions of their securities.